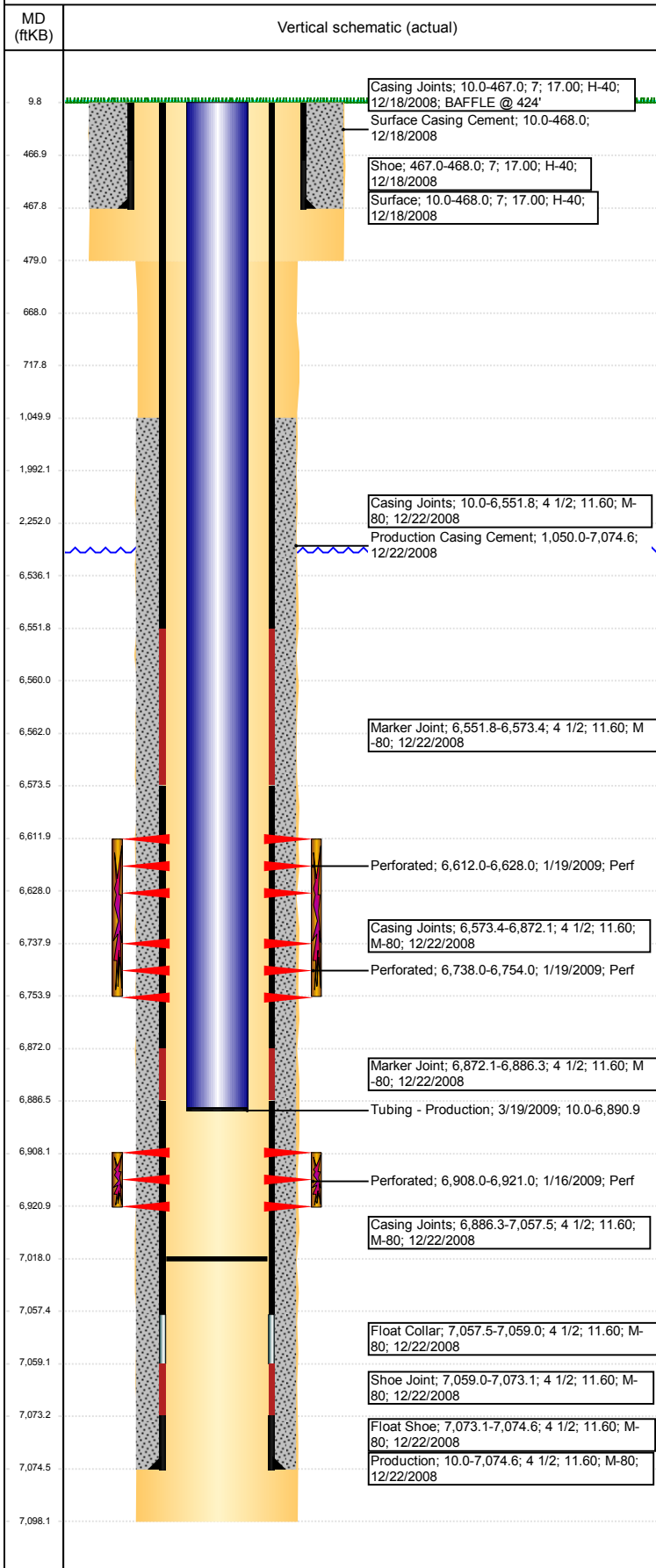


# Wellbore Schematic Input Report

**Well Name: DPG F12-18**

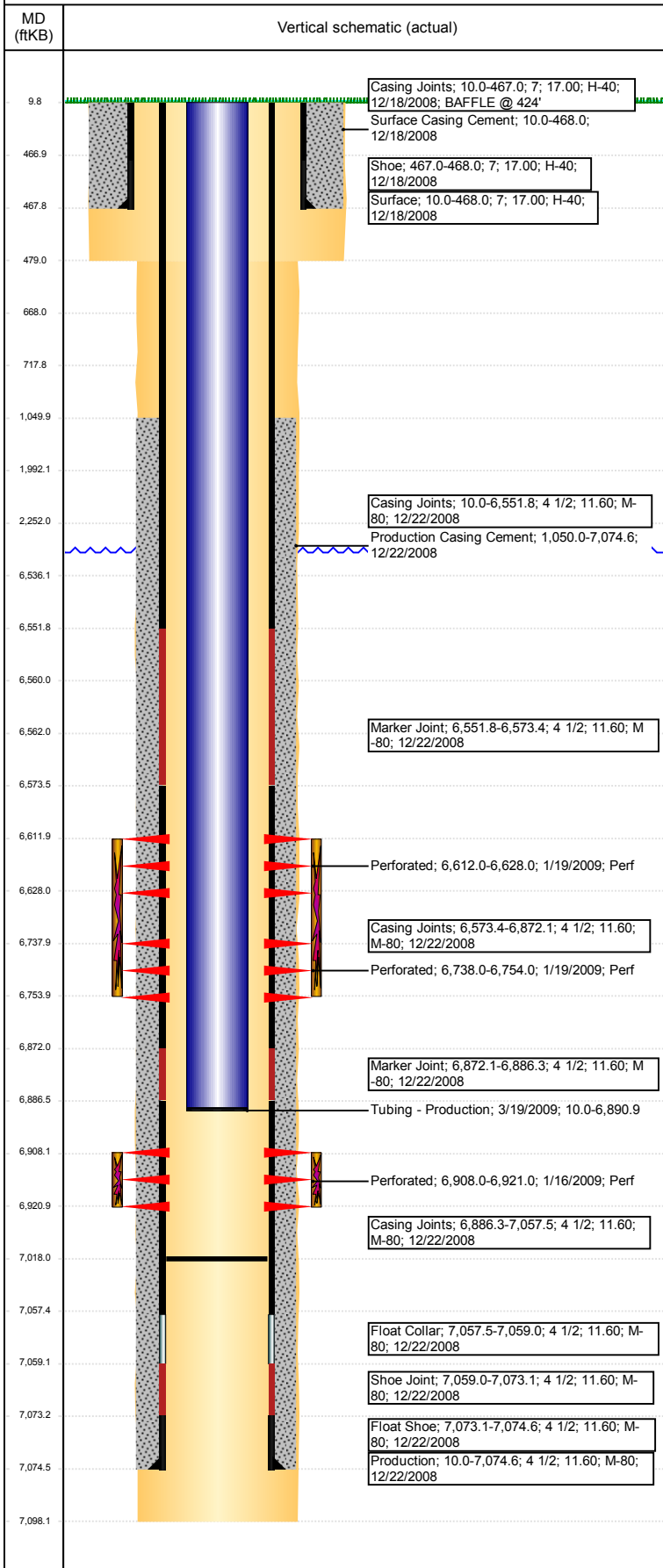
VERTICAL - ORIGINAL HOLE, 2/23/2018 5:02:56 PM



Well Header							
API 05-123-29250		Well Report Center 425675386			Well Configuration Type VERTICAL		
Original KB Elevation (ft) 4,618		KB - GL / MSL (ftKB) 10.00		Spud Date 12/17/2008		P & A Date	
Production Route Watt - A3-01			Well Production Status SI				SoRT Ignore No
Directions To Well HOLLY STREET AND EAST 18TH, NORTHEAST 1 MILE, EAST 50 FT TO LOCATION				Actual Latitude (°) 40.41711760		Actual Longitude (°) -104.61146721	
Comment DISCREPANCY: SURFACE HOLE SIZE - STATE 12 1/4", DAILY RPTS 9 7/8"; PROD. HOLE SIZE - STATE 7 7/8", DAILY RPTS 6 1/4". STATE SHOWS SHUT IN SINCE MARCH 2017.							
Congressional Location							
Quarter 3 SE	Quarter 4 NW	Section 12	Township 5	Twnshp N/S Dir N	Range 65	Range E/W Dir W	
Rig Operator							
Rig Operator							
Plug Back Total Depths							
Date	Depth (ftKB)	Method			Com		
3/18/2009	7,018.0	TAG					
Wellbore Sections							
Section Des		Size (in)		Act Top, MD (ftKB)		Act Btm, MD (ftKB)	
SURFACE		9 7/8		10		479	
PRODUCTION		6 1/4		479		7,098	
Zone Statuses							
Zone Name		Status Date			Status		
NIOBRARA		2/11/2010			PR		
CODELL		3/10/2017			SI		
Casing Strings							
Surface, 468.0ftKB							
Casing Description Surface	Run Date 12/18/2008	OD (in) 7	Wt/Len (l... 17.00	Grade H-40	Top, MD (ft... 10.0	MD (ftKB) 468.0	
Production, 7,074.6ftKB							
Casing Description Production	Run Date 12/22/2008	OD (in) 4 1/2	Wt/Len (l... 11.60	Grade M-80	Top, MD (ft... 10.0	MD (ftKB) 7,074.6	
Cement							
Des		Start Date		Top (ftKB)		Btm (ftKB)	
Surface Casing Cement		12/18/2008		10.0		468.0	
Production Casing Cement		12/22/2008		1,050.0		7,074.6	
Proposed Cement							
Des				Top (ftKB)		Btm (ftKB)	
DUMP BAIL				6,536.0		6,562.0	
COURTESY PLUG				1,992.0		2,252.0	
SHOE PLUG				668.0		718.0	
SHOE PLUG				9.8		668.0	
Tubing Strings							
Tubing Description Tubing - Production	Run Date 3/19/2009	String... 2 3/8	ID (in) 2.00	Wt (lb/ft) 4.70	Grade J-55	Len (ft) 6,880.93	Set De...
Tubing Components							
Item Des		OD (in)	Wt (lb/ft)	Grade	Jts	Len (ft)	Btm (TVD) (ftKB)
Tubing		2 3/8	4.70	J-55	225	6,879.33	6,889.3
Landing Collar		2 3/8	4.70	N-80		1.20	6,890.5
Notched collar		2 3/8	4.70	J-55		0.40	6,890.9
Other In Hole							
Run Date	Des			OD (in)	Top (ftKB)	Btm (ftKB)	
Proposed Other In Hole							
Des			OD (in)	Top (ftKB)	Btm (ftKB)		
Cast Iron Bridge Plug			4	6,560.0	6,562.0		
Logs							
Date	Type				Top, MD (ftKB)	Btm, MD (ftKB)	
12/22/2008	Caliper/Comp. Density/Neutron/GR/SP/ML				2,500.0	7,098.0	

**Well Name: DPG F12-18**

VERTICAL - ORIGINAL HOLE, 2/23/2018 5:02:56 PM



Logs			
Date	Type	Top, MD (ftKB)	Btm, MD (ftKB)
12/22/2008	DIL/GR/SP/Caliper	468.0	7,098.0
1/15/2009	CBL/CCL/GR/VDL	1,050.0	7,023.0
12/2/2015	GYRO	0.0	6,850.0

Perforation Data				
Linked Zone	Sum of Entered Shot Total	Top (ftKB)	Btm (ftKB)	Date
NIORARA, ORIGINAL HOLE	32	6,612.00	6,628.00	1/19/2009
NIORARA, ORIGINAL HOLE	32	6,738.00	6,754.00	1/19/2009
CODELL, ORIGINAL HOLE	52	6,908.00	6,921.00	1/16/2009
<b>Total (Sum)</b>	<b>116</b>			

Job Supply Amounts						
Supply Item Des	Type	Uni...	Job Category	Total...	Total...	Total...