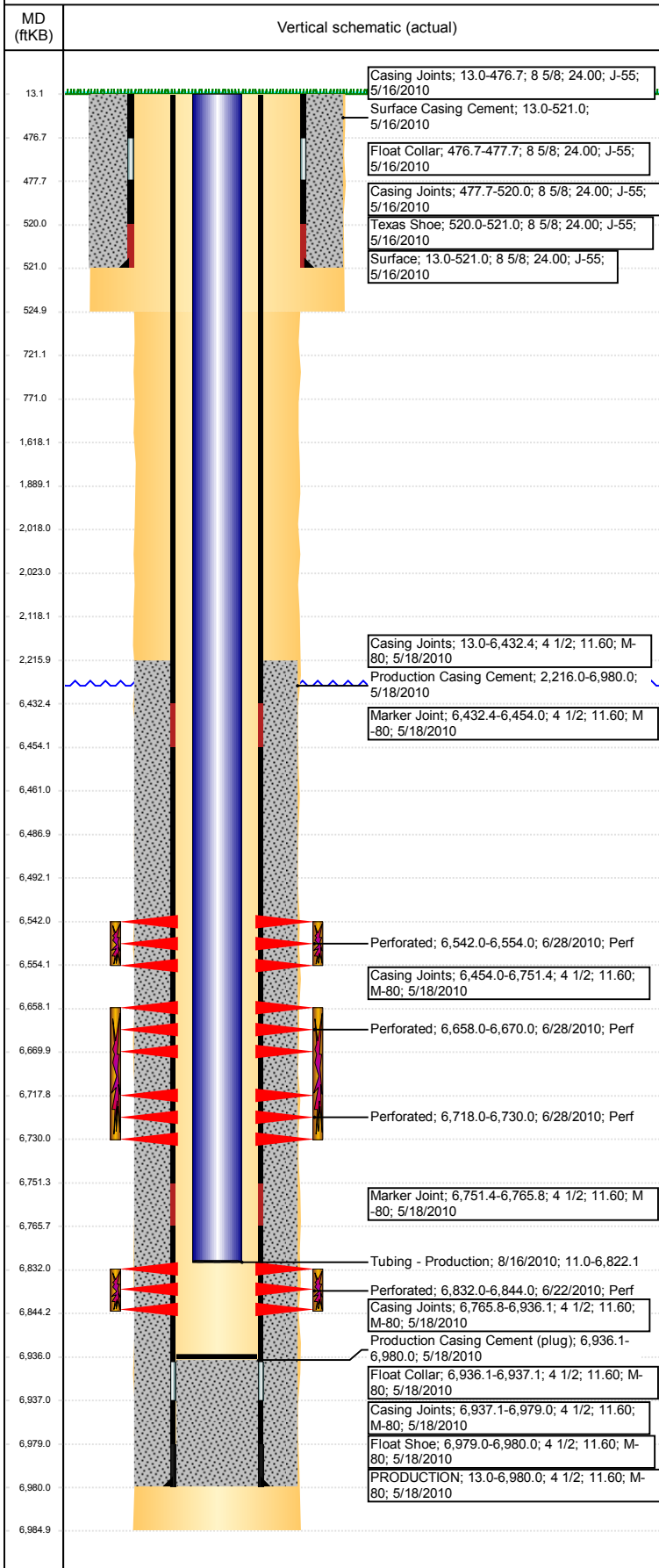


# Wellbore Schematic Input Report

**Well Name: COOPER 23-01-20**

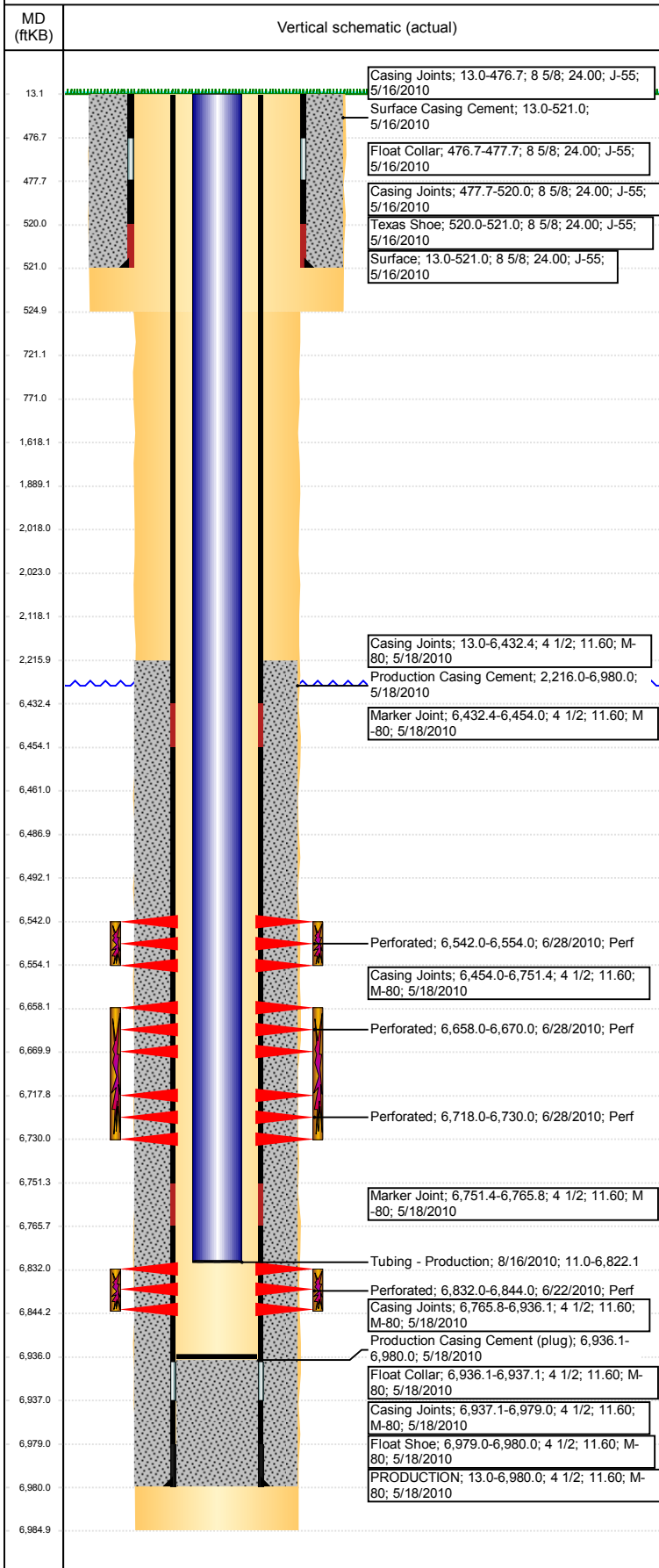
VERTICAL - ORIGINAL HOLE, 2/23/2018 5:00:52 PM



Well Header							
API 05-123-30426		Well Report Center 425790561		Well Configuration Type VERTICAL			
Original KB Elevation (ft) 4,653		KB - GL / MSL (ftKB) 13.00		Spud Date 5/15/2010		P & A Date	
Production Route Watt - B3-06			Well Production Status PR			SoRT Ignore No	
Directions To Well CR 59 & HWY 392, South .2, SW .5, North into location.				Actual Latitude (°) 40.47214455		Actual Longitude (°) -104.51671948	
Comment							
Congressional Location							
Quarter 3 SW	Quarter 4 NE	Section 23	Township 6	Twntshp N/S Dir N	Range 64	Range E/W Dir W	
Rig Operator							
Rig Operator							
Plug Back Total Depths							
Date	Depth (ftKB)	Method		Com			
8/13/2010	6,936.0	TAG					
Wellbore Sections							
Section Des		Size (in)		Act Top, MD (ftKB)		Act Btm, MD (ftKB)	
SURFACE		12 1/4		13		525	
PRODUCTION		7 7/8		525		6,985	
Zone Statuses							
Zone Name		Status Date			Status		
CODELL		6/30/2010			PR		
NIOBRARA		6/30/2010			PR		
Casing Strings							
Surface, 521.0ftKB							
Casing Description Surface	Run Date 5/16/2010	OD (in) 8 5/8	Wt/Len (l... 24.00	Grade J-55	Top, MD (ft... 13.0	MD (ftKB) 521.0	
PRODUCTION, 6,980.0ftKB							
Casing Description PRODUCTION	Run Date 5/18/2010	OD (in) 4 1/2	Wt/Len (l... 11.60	Grade M-80	Top, MD (ft... 13.0	MD (ftKB) 6,980.0	
Cement							
Des		Start Date		Top (ftKB)		Btm (ftKB)	
Surface Casing Cement		5/16/2010		13.0		521.0	
Production Casing Cement		5/18/2010		2,216.0		6,980.0	
Proposed Cement							
Des				Top (ftKB)		Btm (ftKB)	
Dump Bail				6,461.0		6,487.0	
Cement Squeeze				1,618.0		2,118.0	
Cement Squeeze				1,889.0		2,018.0	
Cement Squeeze				2,023.0		2,118.0	
Shoe Plug				13.0		721.0	
Shoe Plug				721.0		771.0	
Tubing Strings							
Tubing Description Tubing - Production	Run Date 8/16/2010	String... 2 3/8	ID (in) 2.00	Wt (lb/ft) 4.70	Grade J-55	Len (ft) 6,811.11	Set De... 6,821.7
Tubing Components							
Item Des	OD (in)	Wt (lb/ft)	Grade	Jts	Len (ft)	Btm (ftKB)	Btm (TVD) (ftKB)
Tubing	2 3/8	4.70	J-55	223	6,809.51	6,820.5	
Pump Seating Nipple	2 3/8	4.70	J-55	1	1.00	6,821.5	6,821.1
Notched collar	2 3/8	4.70	J-55	1	0.60	6,822.1	6,821.7
Other In Hole							
Run Date	Des			OD (in)	Top (ftKB)	Btm (ftKB)	
Proposed Other In Hole							
Des			OD (in)		Top (ftKB)		Btm (ftKB)
Cement Retainer			3.99		2,018.0		2,023.0
Cast Iron Bridge Plug			3.99		6,487.0		6,492.0

**Well Name: COOPER 23-01-20**

VERTICAL - ORIGINAL HOLE, 2/23/2018 5:00:52 PM



Logs			
Date	Type	Top, MD (ftKB)	Btm, MD (ftKB)
5/18/2010	Caliper/Comp. Density/Neutron/GR/SP/ML	2,590.0	6,970.0
5/18/2010	DIL/GR/SP/Caliper	520.0	6,990.0
6/22/2010	CBL/CCL/GR	2,060.0	6,931.0
10/9/2015	GYRO	0.0	6,750.0

Perforation Data				
Linked Zone	Sum of Entered Shot Total	Top (ftKB)	Btm (ftKB)	Date
NIORARA, ORIGINAL HOLE	24	6,542.00	6,554.00	6/28/2010
NIORARA, ORIGINAL HOLE	24	6,658.00	6,670.00	6/28/2010
NIORARA, ORIGINAL HOLE	24	6,718.00	6,730.00	6/28/2010
CODELL, ORIGINAL HOLE	48	6,832.00	6,844.00	6/22/2010
<b>Total (Sum)</b>	<b>120</b>			

Proposed Perforations				
Linked Zone	Sum of En...	Top Depth (ftKB)	Btm (ftKB)	Date
	0	2,118.00	2,118.00	1/10/2018
<b>Total (Sum)</b>	<b>0</b>			

Job Supply Amounts						
Supply Item Des	Type	Uni...	Job Category	Total ...	Total ...	Total ...