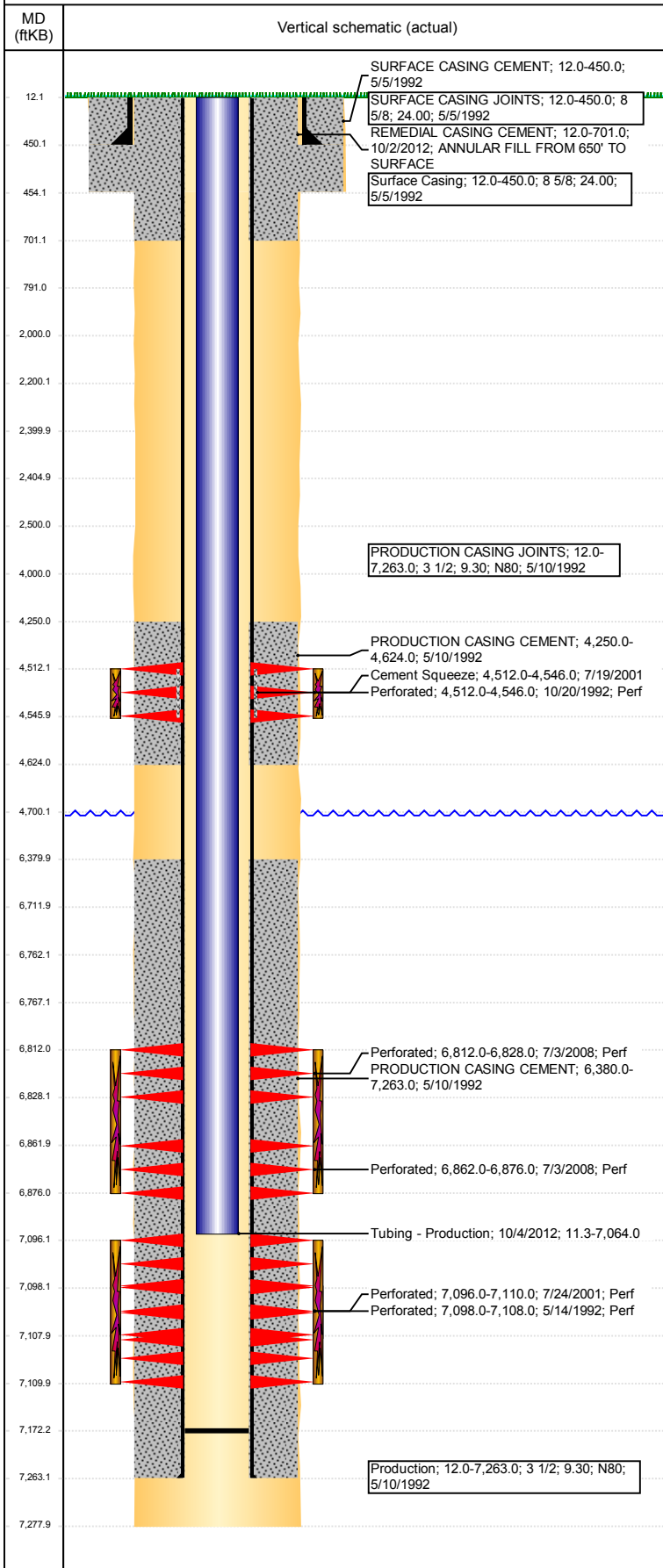


**Well Name: BOHLENDER H14-09**

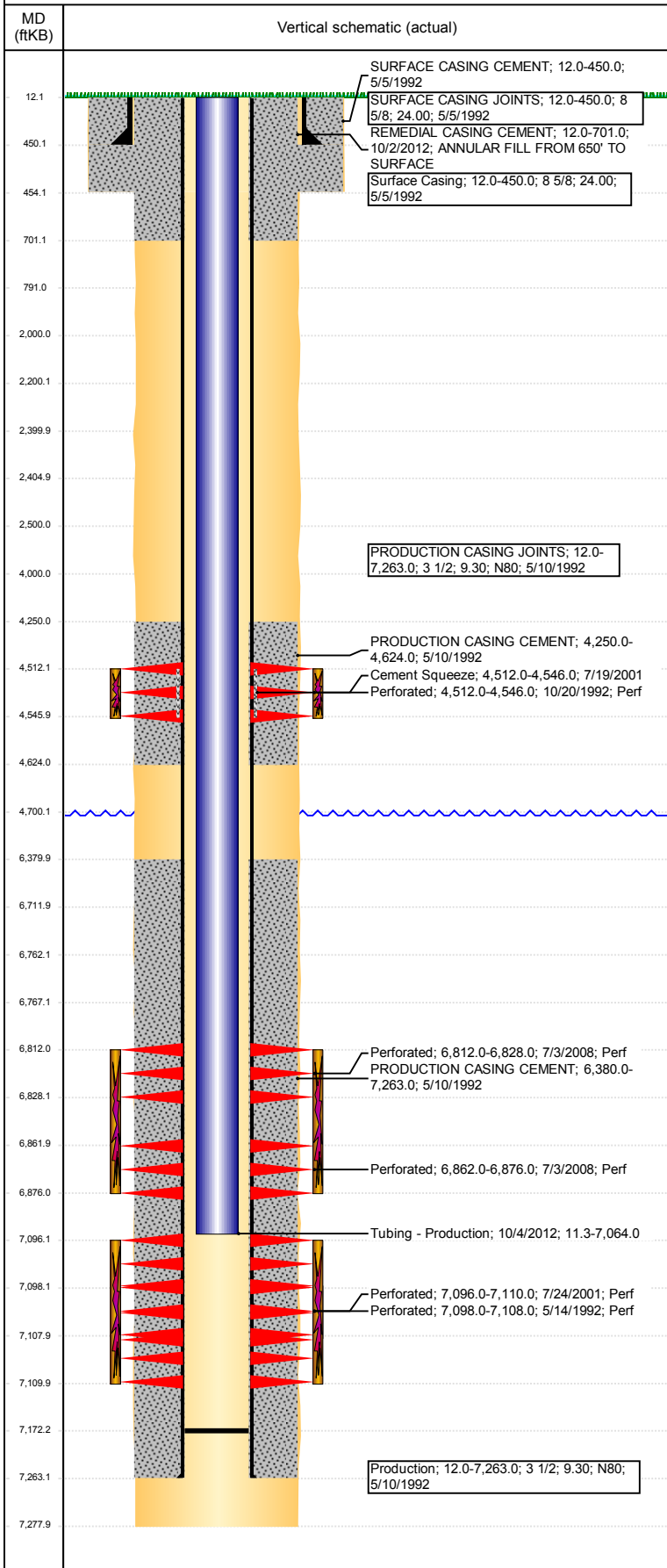
VERTICAL - ORIGINAL HOLE, 2/21/2018 5:26:26 PM



Well Header								
API 05-123-15745		Well Report Center 422124536			Well Configuration Type VERTICAL			
Original KB Elevation (ft) 4,833		KB - GL / MSL (ftKB) 12.00		Spud Date 5/5/1992		P & A Date		
Production Route Watt - C1-09			Well Production Status SI				SoRT Ignore No	
Directions To Well WCR 47 & 34 1/2, SOUTH 1.1 MILE, WEST 1/10 INTO				Actual Latitude (°) 40.22375179		Actual Longitude (°) -104.62325897		
Comment sqz Sx								
Congressional Location								
Quarter 3 NE	Quarter 4 SE	Section 14	Township 3	Twntshp N/S Dir N	Range 65	Range E/W Dir W		
Rig Operator								
Rig Operator								
Plug Back Total Depths								
Date	Depth (ftKB)	Method			Com			
8/5/2008	7,172.2	TBG TALLY			CLEANED OUT SANDPLUG AND TAGGED HARD...			
Wellbore Sections								
Section Des		Size (in)		Act Top, MD (ftKB)		Act Btm, MD (ftKB)		
SURFACE		12 1/4		12		454		
PRODUCTION		7 7/8		454		7,278		
Zone Statuses								
Zone Name		Status Date			Status			
SUSSEX		7/19/2001			AB			
CODELL		5/14/2010			PR			
NIOBRARA		5/9/2017			SI			
Casing Strings								
Surface Casing, 450.0ftKB								
Casing Description Surface Casing	Run Date 5/5/1992	OD (in) 8 5/8	Wt/Len (l... 24.00	Grade	Top, MD (ft... 12.0	MD (ftKB) 450.0		
Production, 7,263.0ftKB								
Casing Description Production	Run Date 5/10/1992	OD (in) 3 1/2	Wt/Len (l... 9.30	Grade N80	Top, MD (ft... 12.0	MD (ftKB) 7,263.0		
Cement								
Des		Start Date		Top (ftKB)		Btm (ftKB)		
SURFACE CASING CEMENT		5/5/1992		12.0		450.0		
PRODUCTION CASING CEMENT		5/10/1992		4,250.0		4,624.0		
PRODUCTION CASING CEMENT		5/10/1992		6,380.0		7,263.0		
Cement Squeeze		7/19/2001		4,512.0		4,546.0		
REMEDIAL CASING CEMENT		10/2/2012		12.0		701.0		
Proposed Cement								
Des				Top (ftKB)		Btm (ftKB)		
Dump Bail				6,712.0		6,762.0		
Balance Plug				2,200.0		2,400.0		
Balance Plug				2,405.0		2,500.0		
Cement Squeeze				2,000.0		2,500.0		
Balance Plug				12.0		791.0		
Balance Plug				4,000.0		4,700.0		
Tubing Strings								
Tubing Description		Run Date	String...	ID (in)	Wt (lb/ft)	Grade	Len (ft)	Set De...
Tubing - Production		10/4/2012	2 1/16	1.75	3.25	J-55	7,052.70	
Tubing Components								
Item Des	OD (in)	Wt (lb/ft)	Grade	Jts	Len (ft)	Btm (ftKB)	Btm (TVD) (ftKB)	
Tubing	2 1/16	3.25	J-55	219	7,051.50	7,062.8		
Pump Seating Nipple	2 1/16			1	1.20	7,064.0		
Other In Hole								
Run Date	Des				OD (in)	Top (ftKB)	Btm (ftKB)	
Proposed Other In Hole								
Des				OD (in)	Top (ftKB)	Btm (ftKB)		
Cast Iron Bridge Plug				2.992	6,762.0	6,767.0		

**Well Name: BOHLENDER H14-09**

VERTICAL - ORIGINAL HOLE, 2/21/2018 5:26:27 PM



Proposed Other In Hole						
Des	OD (in)	Top (ftKB)	Btm (ftKB)			
Cement Retainer	2.992	2,400.0	2,405.0			
Logs						
Date	Type	Top, MD (ftKB)	Btm, MD (ftKB)			
5/9/1992	COMPENSATED DENSITY GAMMA RAY	4,300.0	7,266.0			
5/9/1992	DUAL INDUCTION GUARD LOG	4,300.0	4,700.0			
5/14/1992	CEMENT BOND LOG	4,130.0	7,187.0			
10/3/2012	CBL/CCL/GR	450.0	883.0			
11/24/2014	GYRO	10.0	6,950.0			
Perforation Data						
Linked Zone	Sum of Entered Shot Total	Top (ftKB)	Btm (ftKB)	Date		
SUSSEX, ORIGINAL HOLE	15	4,512.00	4,546.00	10/20/1992		
NIOBRARA, ORIGINAL HOLE	64	6,812.00	6,828.00	7/3/2008		
NIOBRARA, ORIGINAL HOLE	56	6,862.00	6,876.00	7/3/2008		
CODELL, ORIGINAL HOLE	56	7,096.00	7,110.00	7/24/2001		
CODELL, ORIGINAL HOLE	40	7,098.00	7,108.00	5/14/1992		
Total (Sum)	231					
Proposed Perforations						
Linked Zone	Sum of En...	Top Depth (ftKB)	Btm (ftKB)	Date		
CODELL, ORIGINAL HOLE	0	2,000.00	2,000.00	1/26/2018		
Linked Zone	Sum of En...	Top Depth (ftKB)	Btm (ftKB)	Date		
CODELL, ORIGINAL HOLE	0	2,500.00	2,500.00	1/26/2018		
Total (Sum)	0					
Job Supply Amounts						
Supply Item Des	Type	Uni...	Job Category	Total ...	Total ...	Total ...