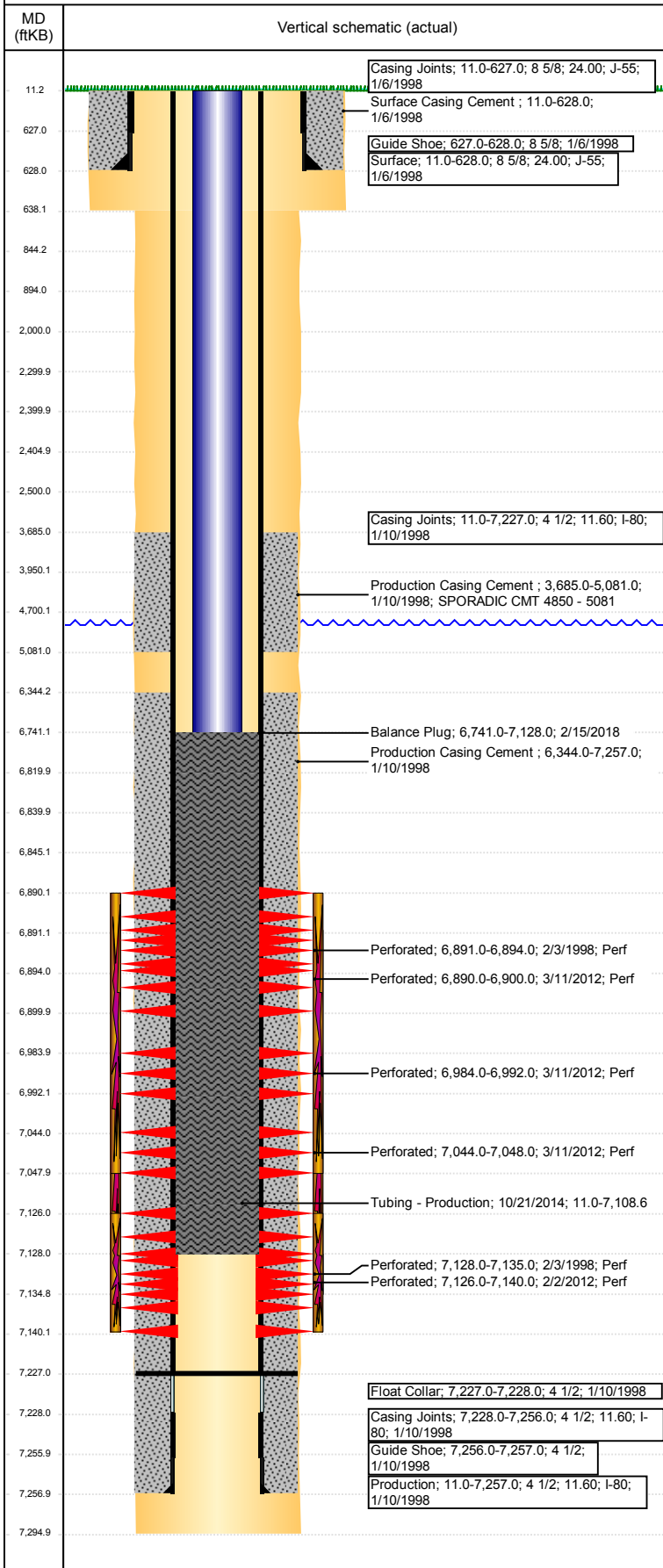


Wellbore Schematic Input Report

Well Name: HSR MOSER 1-27

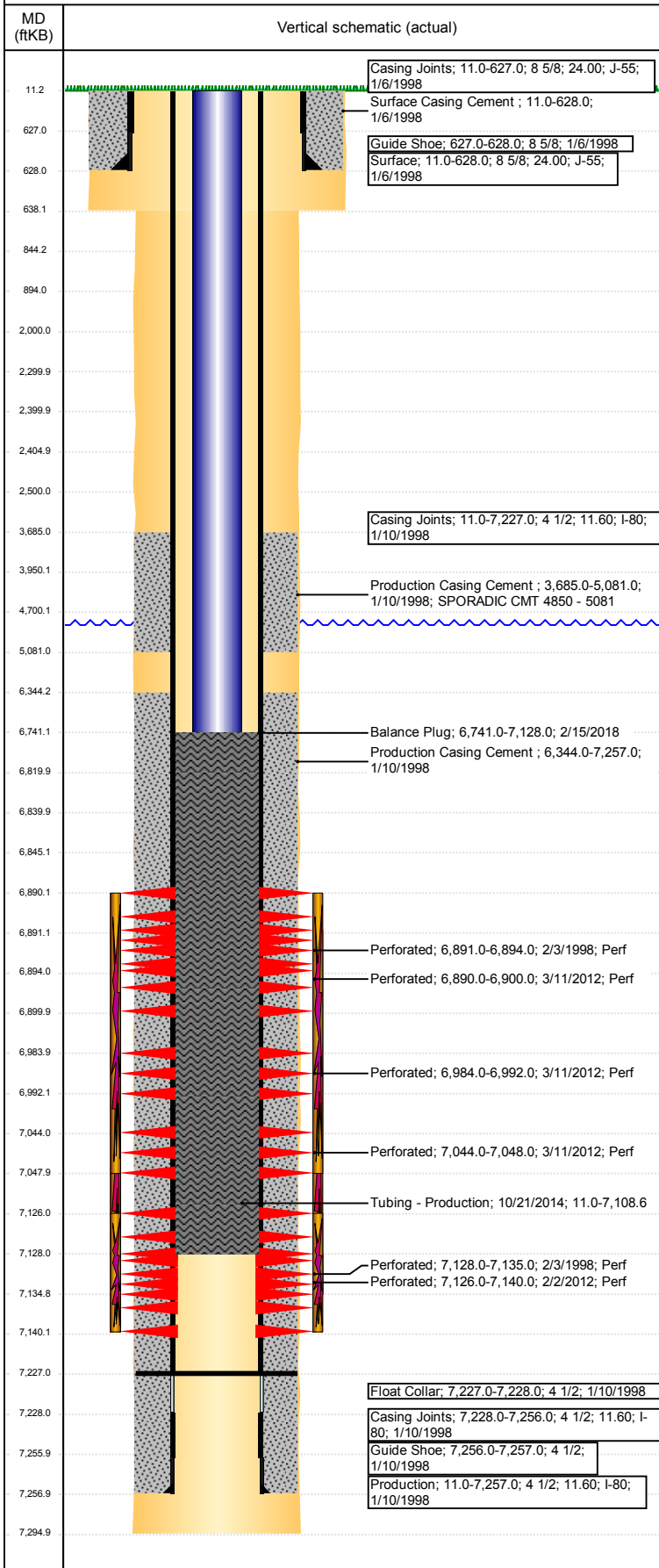
VERTICAL - ORIGINAL HOLE, 2/21/2018 5:25:08 PM



Well Header							
API 05-123-19508		Well Report Center 425857469		Well Configuration Type VERTICAL			
Original KB Elevation (ft) 4,821		KB - GL / MSL (ftKB) 11.00		Spud Date 1/6/1998		P & A Date	
Production Route C1-07			Well Production Status TA			SoRT Ignore Yes	
Directions To Well RD 43 AND 30 E 1 MILE SOUTH 1/10 WEST INTO				Actual Latitude (°) 40.20202580		Actual Longitude (°) -104.64186860	
Comment WELL DATA SKETCHY & SPARSE.							
TD DISCREPANCY: DRL RPTS = 7280, OPEN HOLE LOGS & ST RPT =7295.							
Congressional Location							
Quarter 3 NE	Quarter 4 NE	Section 27	Township 3	Twntshp N/S Dir N	Range 65	Range E/W Dir W	
Rig Operator							
Rig Operator							
Plug Back Total Depths							
Date	Depth (ftKB)	Method			Com		
4/19/2012	7,227.0	TAG			CLEAN OUT & LAND TBG		
Wellbore Sections							
Section Des		Size (in)		Act Top, MD (ftKB)		Act Btm, MD (ftKB)	
SURFACE		12 1/4		11		638	
PRODUCTION		7 7/8		638		7,295	
Zone Statuses							
Zone Name		Status Date			Status		
NIOBRARA		2/15/2018			TA		
NIOBRARA-CODELL		2/15/2018			TA		
CODELL		2/15/2018			TA		
Casing Strings							
Surface, 628.0ftKB							
Casing Description Surface	Run Date 1/6/1998	OD (in) 8 5/8	Wt/Len (l... 24.00	Grade J-55	Top, MD (ft... 11.0	MD (ftKB) 628.0	
Production, 7,257.0ftKB							
Casing Description Production	Run Date 1/10/1998	OD (in) 4 1/2	Wt/Len (l... 11.60	Grade I-80	Top, MD (ft... 11.0	MD (ftKB) 7,257.0	
Cement							
Des		Start Date		Top (ftKB)		Btm (ftKB)	
Surface Casing Cement		1/6/1998		11.0		628.0	
Production Casing Cement		1/10/1998		3,685.0		5,081.0	
Production Casing Cement		1/10/1998		6,344.0		7,257.0	
Balance Plug		2/15/2018		6,741.0		7,128.0	
Proposed Cement							
Des				Top (ftKB)		Btm (ftKB)	
Dump Bail				6,820.0		6,840.0	
Balance Plug				3,950.0		4,700.0	
Balance Plug				2,300.0		2,400.0	
Balance Plug				2,405.0		2,500.0	
Cement Squeeze				2,000.0		2,500.0	
Balance Plug				844.0		894.0	
Balance Plug				628.0		844.0	
Balance Plug				11.0		628.0	
Tubing Strings							
Tubing Description Tubing - Production	Run Date 10/21/2014	String... 2 3/8	ID (in) 2.00	Wt (lb/ft) 4.70	Grade J-55	Len (ft) 7,097.60	Set De...
Tubing Components							
Item Des	OD (in)	Wt (lb/ft)	Grade	Jts	Len (ft)	Btm (ftKB)	Btm (TVD) (ftKB)
EUE 8rd Tubing	2 3/8	4.70	J-55	223	7,096.02	7,107.0	
Pump Seating Nipple	2 3/8	4.70	N-80	1	1.13	7,108.2	
Notched collar	2 3/8	4.70	J-55	1	0.45	7,108.6	
Other In Hole							
Run Date	Des			OD (in)	Top (ftKB)	Btm (ftKB)	

Well Name: HSR MOSER 1-27

VERTICAL - ORIGINAL HOLE, 2/21/2018 5:25:09 PM



Proposed Other In Hole			
Des	OD (in)	Top (ftKB)	Btm (ftKB)
Cast Iron Bridge Plug	4	6,840.0	6,845.0
Cement Retainer	4	2,400.0	2,405.0

Logs			
Date	Type	Top, MD (ftKB)	Btm, MD (ftKB)
1/10/1998	COMPENSATED DENSITY	4,300.0	7,277.0
1/10/1998	INDUCTION	628.0	7,295.0
1/16/1998	CBL/CCL/GR	3,500.0	7,218.0
2/2/2014	GYRO	10.0	7,050.0

Perforation Data				
Linked Zone	Sum of Entered Shot Total	Top (ftKB)	Btm (ftKB)	Date
NIOBRARA, ORIGINAL HOLE	30	6,890.00	6,900.00	3/11/2012
NIOBRARA, ORIGINAL HOLE	4	6,891.00	6,894.00	2/3/1998
NIOBRARA, ORIGINAL HOLE	16	6,984.00	6,992.00	3/11/2012
NIOBRARA, ORIGINAL HOLE	16	7,044.00	7,048.00	3/11/2012
CODELL, ORIGINAL HOLE	42	7,126.00	7,140.00	2/2/2012
CODELL, ORIGINAL HOLE	14	7,128.00	7,135.00	2/3/1998
Total (Sum)	122			

Proposed Perforations				
Linked Zone	Sum of En...	Top Depth (ftKB)	Btm (ftKB)	Date
	0	2,500.00	2,500.00	1/25/2018
Total (Sum)	0			

Job Supply Amounts					
Supply Item Des	Type	Uni...	Job Category	Total ...	Total ...