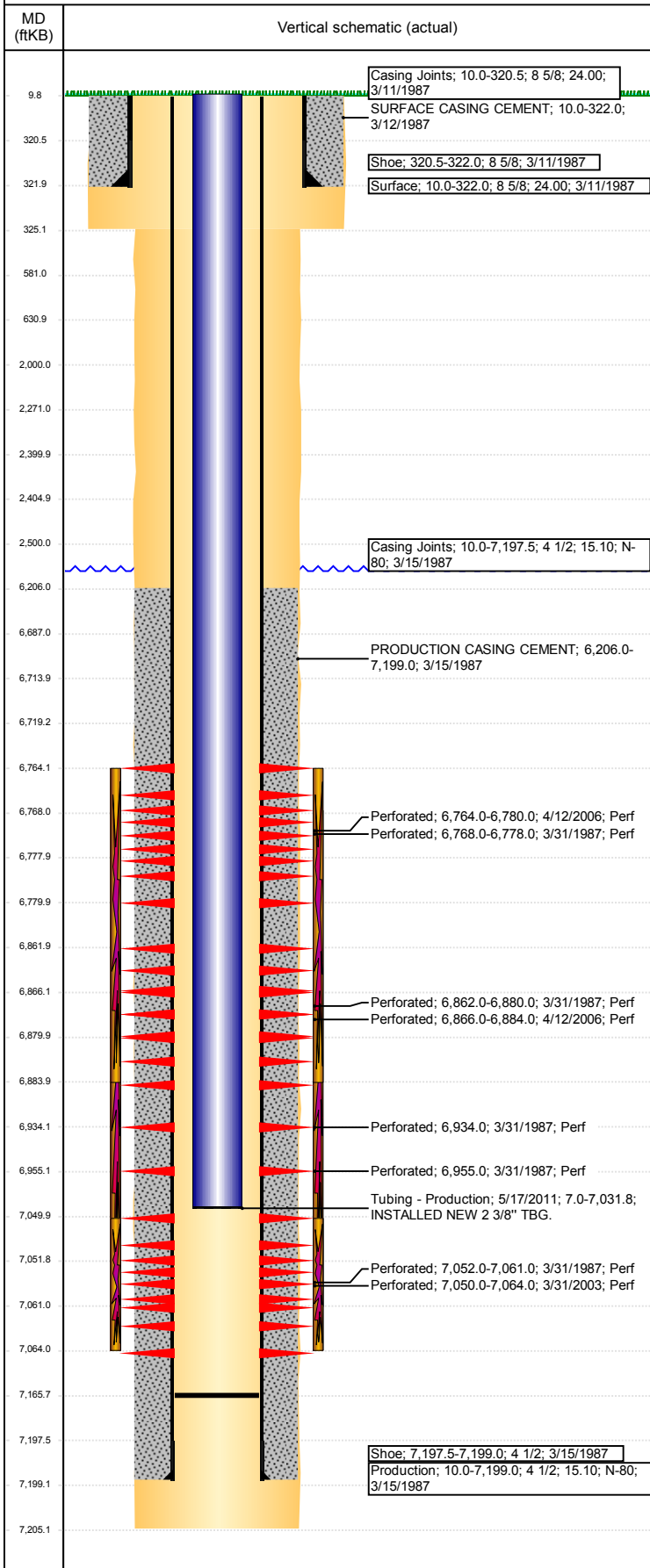


Well Name: OCOMA B31-10

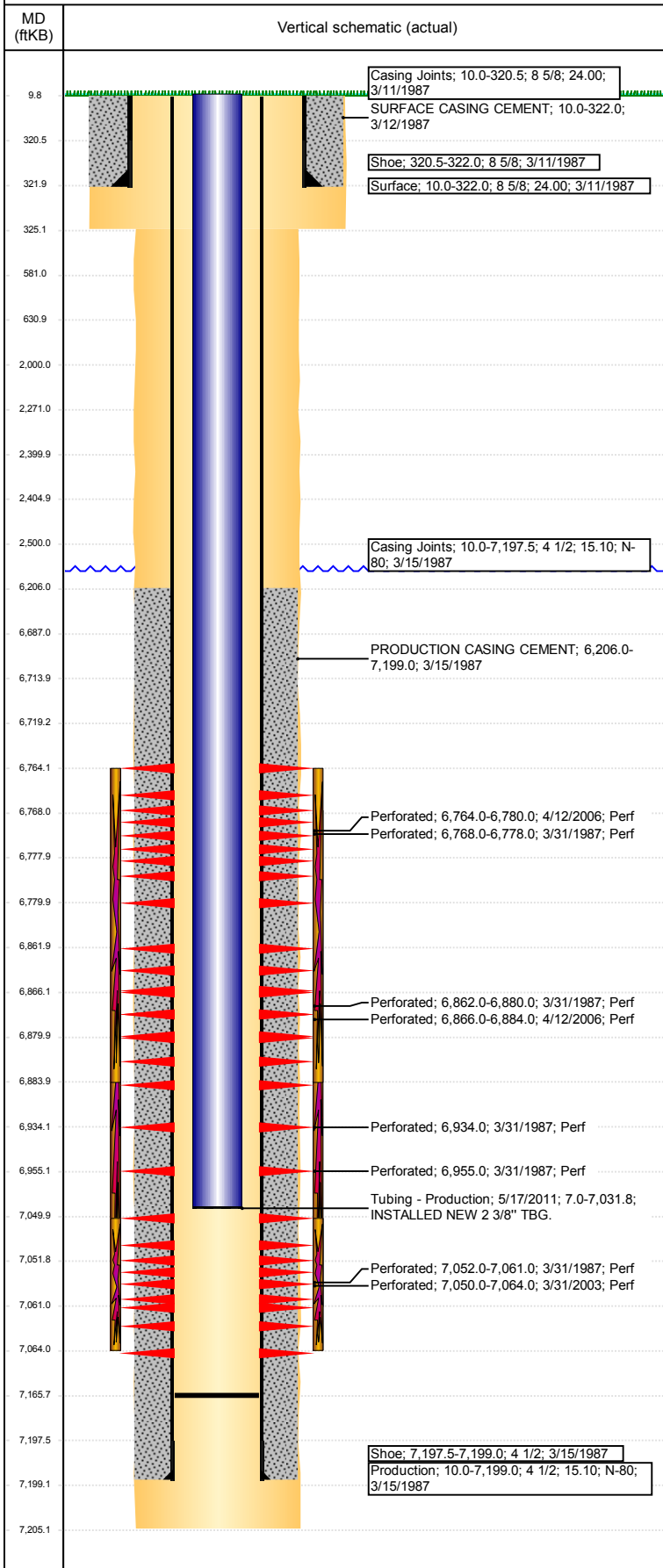
VERTICAL - ORIGINAL HOLE, 2/21/2018 5:21:18 PM



Well Header							
API 05-123-13394		Well Report Center 422125483			Well Configuration Type VERTICAL		
Original KB Elevation (ft) 4,822		KB - GL / MSL (ftKB) 10.00		Spud Date 3/11/1987		P & A Date	
Production Route Watt - B1-06			Well Production Status PR				SoRT Ignore No
Directions To Well WCR 50 & 51, WEST .25, NORTH INTO.					Actual Latitude (°) 40.35340132	Actual Longitude (°) -104.59019817	
Comment							
Congressional Location							
Quarter 3 NW	Quarter 4 SE	Section 31	Township 5	Twnshp N/S Dir N	Range 64	Range E/W Dir W	
Rig Operator							
Rig Operator							
Plug Back Total Depths							
Date	Depth (ftKB)	Method			Com		
5/17/2011	7,165.5	TAG			C/O, TBG TALLY MEASUREMENT.		
Wellbore Sections							
Section Des		Size (in)		Act Top, MD (ftKB)		Act Btm, MD (ftKB)	
SURFACE		12 1/4		10		325	
PRODUCTION		7 7/8		325		7,205	
Zone Statuses							
Zone Name		Status Date			Status		
CODELL		6/20/2011			PR		
NIOBRARA		5/4/2006			PR		
Casing Strings							
Surface, 322.0ftKB							
Casing Description Surface	Run Date 3/11/1987	OD (in) 8 5/8	Wt/Len (l... 24.00	Grade	Top, MD (ft... 10.0	MD (ftKB) 322.0	
Production, 7,199.0ftKB							
Casing Description Production	Run Date 3/15/1987	OD (in) 4 1/2	Wt/Len (l... 15.10	Grade N-80	Top, MD (ft... 10.0	MD (ftKB) 7,199.0	
Cement							
Des			Start Date		Top (ftKB)		Btm (ftKB)
SURFACE CASING CEMENT			3/12/1987		10.0		322.0
PRODUCTION CASING CEMENT			3/15/1987		6,206.0		7,199.0
Proposed Cement							
Des					Top (ftKB)		Btm (ftKB)
Cement Plug					2,271.0		2,400.0
Cement Plug					2,405.0		2,500.0
Cement Plug					6,687.0		6,714.0
Cement Plug					581.0		631.0
Cement Plug					2,000.0		2,500.0
Cement Plug					10.0		581.0
Tubing Strings							
Tubing Description Tubing - Production	Run Date 5/17/2011	String... 2 3/8	ID (in) 2.00	Wt (lb/ft) 4.70	Grade J-55	Len (ft) 7,024.80	Set De...
Tubing Components							
Item Des		OD (in)	Wt (lb/ft)	Grade	Jts	Len (ft)	Btm (ftKB) Btm (TVD) (ftKB)
EUE 8rd Tubing		2 3/8	4.70	J-55	229	7,023.60	7,030.6
Notch Seat Nipple		2 3/8	4.70	N-80	1	1.20	7,031.8
Other In Hole							
Run Date		Des			OD (in)	Top (ftKB)	Btm (ftKB)
Proposed Other In Hole							
Des			OD (in)		Top (ftKB)		Btm (ftKB)
Cast Iron Bridge Plug			3.99		6,714.0		6,719.0
Cement Retainer			3.99		2,400.0		2,405.0
Logs							
Date		Type				Top, MD (ftKB) Btm, MD (ftKB)	
3/14/1987		COMPENSATED DENSITY				2,800.0 7,202.0	
3/14/1987		INDUCTION				300.0 7,199.0	
3/31/1987		CBL/CCL/GR				5,867.0 7,129.0	
3/31/1987		PERFORATION				6,768.0 7,061.0	

Well Name: OCOMA B31-10

VERTICAL - ORIGINAL HOLE, 2/21/2018 5:21:19 PM



Logs			
Date	Type	Top, MD (ftKB)	Btm, MD (ftKB)
6/7/2016	GYRO	0.0	6,900.0

Perforation Data				
Linked Zone	Sum of Entered Shot Total	Top (ftKB)	Btm (ftKB)	Date
NIOBRARA, ORIGINAL HOLE	96	6,764.00	6,780.00	4/12/2006
NIOBRARA, ORIGINAL HOLE	3	6,768.00	6,778.00	3/31/1987
NIOBRARA, ORIGINAL HOLE	5	6,862.00	6,880.00	3/31/1987
NIOBRARA, ORIGINAL HOLE	108	6,866.00	6,884.00	4/12/2006
NIOBRARA, ORIGINAL HOLE	1	6,934.00	6,934.00	3/31/1987
NIOBRARA, ORIGINAL HOLE	1	6,955.00	6,955.00	3/31/1987
CODELL, ORIGINAL HOLE	56	7,050.00	7,064.00	3/31/2003
CODELL, ORIGINAL HOLE	5	7,052.00	7,061.00	3/31/1987
Total (Sum)	275			

Proposed Perforations				
Linked Zone	Sum of En...	Top Depth (ftKB)	Btm (ftKB)	Date
CODELL, ORIGINAL HOLE	0	2,500.00	2,500.00	1/11/2018
Total (Sum)	0			

Job Supply Amounts					
Supply Item Des	Type	Uni...	Job Category	Total ...	Total ...