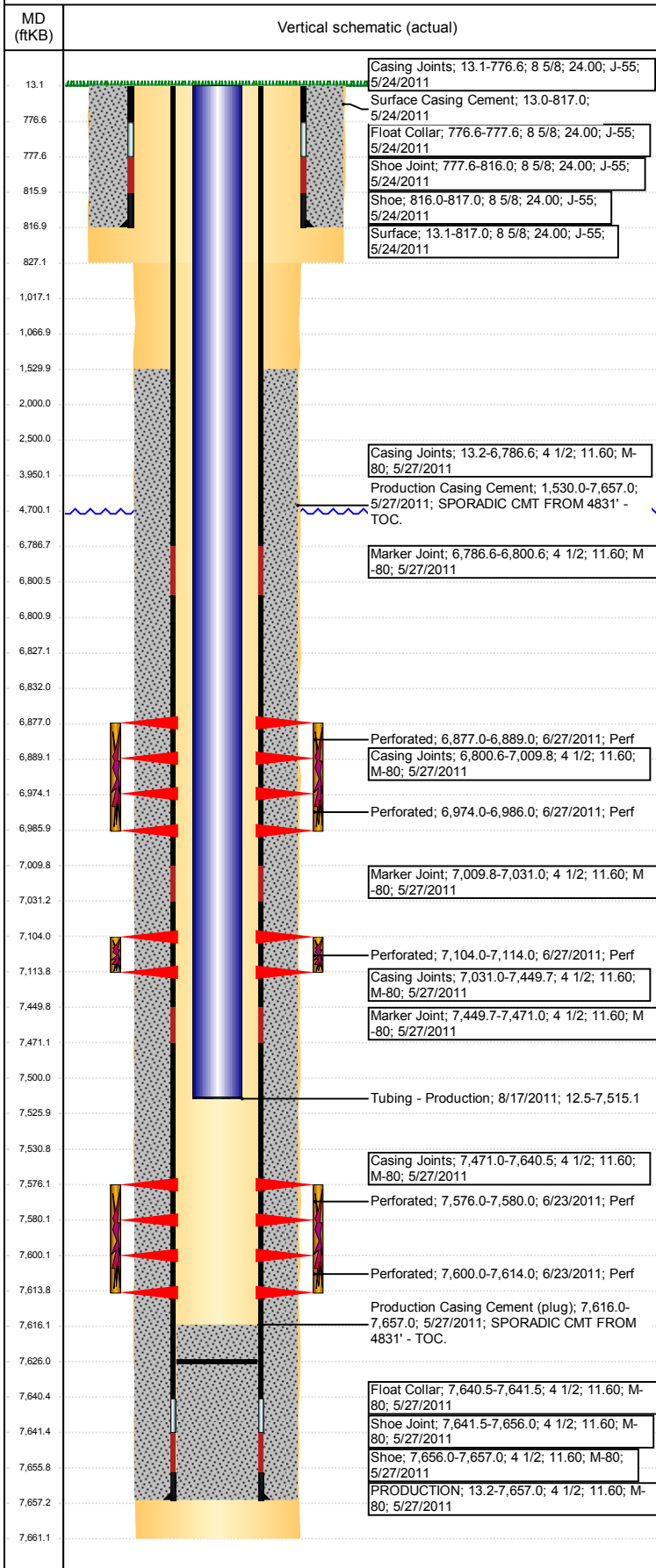


Wellbore Schematic Input Report

Well Name: ADAMS D30-27D

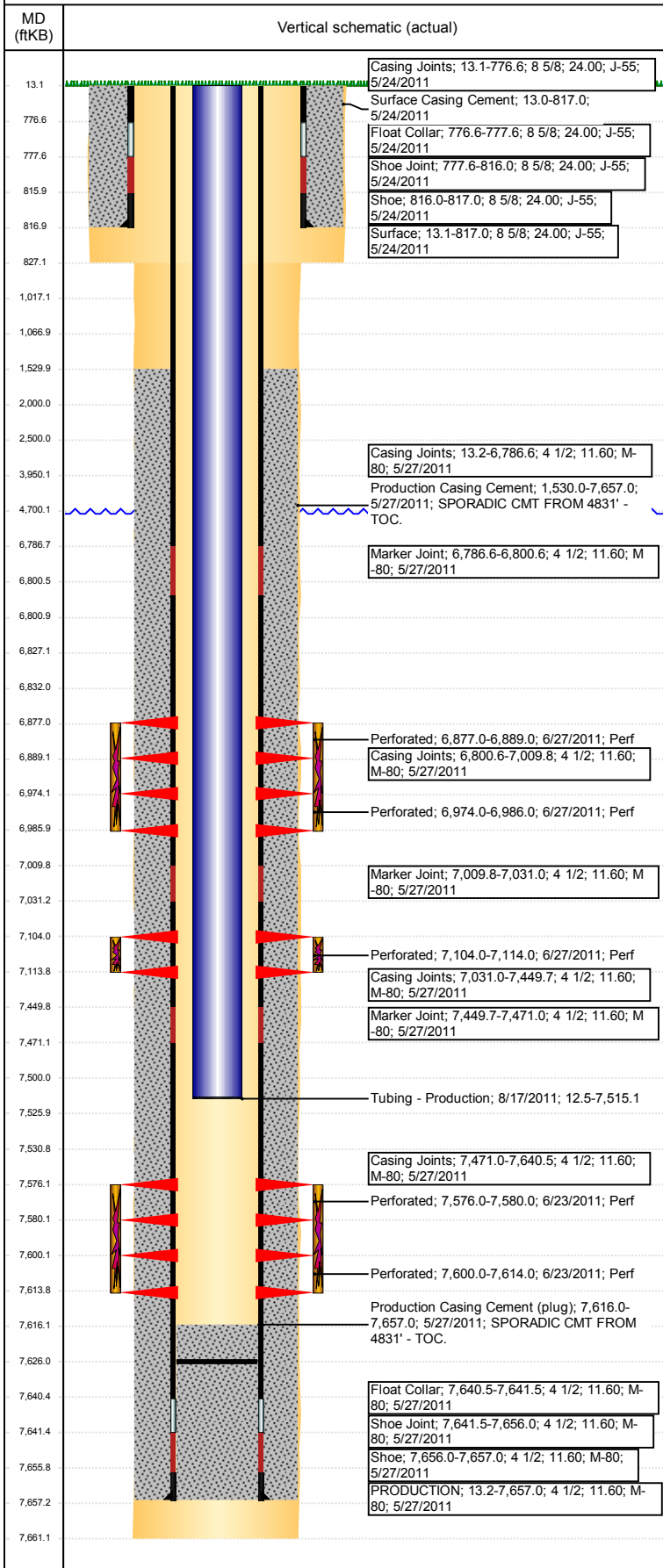
DEVIATED - ORIGINAL HOLE, 2/21/2018 5:20:14 PM



Well Header								
API 05-123-33200		Well Report Center 425790719		Well Configuration Type DEVIATED				
Original KB Elevation (ft) 4,795		KB - GL / MSL (ftKB) 13.00		Spud Date 5/23/2011		P & A Date		
Production Route C1-04			Well Production Status SI			SoRT Ignore No		
Directions To Well FROM WCR 30 & 49, GO EAST 0.5 MILES THEN SOUTH INTO LOCATION				Actual Latitude (°) 40.20224926		Actual Longitude (°) -104.59162143		
Comment								
Congressional Location								
Quarter 3 NW	Quarter 4 NE	Section 30	Township 3	Twtnshp N/S Dir N	Range 64	Range E/W Dir W		
Rig Operator								
Rig Operator								
Plug Back Total Depths								
Date	Depth (ftKB)	Method		Com				
8/15/2011	7,626.1	TBG TALLY		DRILLED OUT 2-CFP AND C/O TO 7626.05' KB AN...				
Wellbore Sections								
Section Des		Size (in)		Act Top, MD (ftKB)		Act Btm, MD (ftKB)		
SURFACE		12 1/4		13		827		
PRODUCTION		7 7/8		827		7,661		
Zone Statuses								
Zone Name		Status Date			Status			
CODELL		3/10/2017			SI			
NIOBRARA		7/1/2011			PR			
J SAND		3/10/2017			SI			
Casing Strings								
Surface, 817.0ftKB								
Casing Description Surface		Run Date 5/24/2011	OD (in) 8 5/8	Wt/Len (l...) 24.00	Grade J-55	Top, MD (ft...) 13.1	MD (ftKB) 817.0	
PRODUCTION, 7,657.0ftKB								
Casing Description PRODUCTION		Run Date 5/27/2011	OD (in) 4 1/2	Wt/Len (l...) 11.60	Grade M-80	Top, MD (ft...) 13.2	MD (ftKB) 7,657.0	
Cement								
Des		Start Date		Top (ftKB)		Btm (ftKB)		
Surface Casing Cement		5/24/2011		13.0		817.0		
Production Casing Cement		5/27/2011		1,530.0		7,657.0		
Proposed Cement								
Des				Top (ftKB)		Btm (ftKB)		
Dump Bail				7,500.0		7,526.0		
Dump Bail				6,801.0		6,827.0		
Balance Plug				3,950.0		4,700.0		
Balance Plug				2,000.0		2,500.0		
Balance Plug				1,017.0		1,067.0		
Balance Plug				817.0		1,017.0		
Balance Plug				13.0		817.0		
Tubing Strings								
Tubing Description Tubing - Production		Run Date 8/17/2011	String... 2 3/8	ID (in) 2.00	Wt (lb/ft) 4.70	Grade J-55	Len (ft) 7,502.60	Set De... 7,436.7
Tubing Components								
Item Des		OD (in)	Wt (lb/ft)	Grade	Jts	Len (ft)	Btm (ftKB)	Btm (TVD) (ftKB)
Tubing Pup Joint		2 3/8	4.70	J-55	1	9.80	22.3	
Tubing		2 3/8	4.70	J-55	244	7,491.30	7,513.6	
Seating Nipple		2 3/8			1	1.10	7,514.7	7,436.3
Notched collar		2 3/8			1	0.40	7,515.1	7,436.7
Other In Hole								
Run Date		Des		OD (in)	Top (ftKB)		Btm (ftKB)	
Proposed Other In Hole								
Des				OD (in)	Top (ftKB)		Btm (ftKB)	
Cast Iron Bridge Plug				4	6,827.0		6,832.0	
Cast Iron Bridge Plug				4	7,526.0		7,531.0	

Well Name: ADAMS D30-27D

DEVIATED - ORIGINAL HOLE, 2/21/2018 5:20:15 PM



Logs				
Date	Type	Top, MD (ftKB)	Btm, MD (ftKB)	
5/9/2011	CBL/CCL/GR	1,300.0	7,616.0	
5/27/2011	Caliper/Comp. Density/Neutron/GR/SP/ML	2,800.0	7,646.0	
5/27/2011	DIL/GR/SP/Caliper	816.0	7,666.0	
2/21/2017	GYRO	0.0	7,450.0	

Perforation Data				
Linked Zone	Sum of Entered Shot Total	Top (ftKB)	Btm (ftKB)	Date
NIOBRARA, ORIGINAL HOLE	24	6,877.00	6,889.00	6/27/2011
NIOBRARA, ORIGINAL HOLE	24	6,974.00	6,986.00	6/27/2011
CODELL, ORIGINAL HOLE	40	7,104.00	7,114.00	6/27/2011
J SAND, ORIGINAL HOLE	16	7,576.00	7,580.00	6/23/2011
J SAND, ORIGINAL HOLE	56	7,600.00	7,614.00	6/23/2011
Total (Sum)	160			

Job Supply Amounts						
Supply Item Des	Type	Uni...	Job Category	Total...	Total...	Total...