

BONANZA CREEK OIL COMPANY

Location: COLORADO Slot: SLOT#03 STATE ANTELOPE T34-2-14XRLNB (310°FNL & 778°FEL, SEC.11)
Field: WELD COUNTY Well: STATE ANTELOPE T34-2-14XRLNB
Facility: SEC.11-T5N-R62W Wellbore: STATE ANTELOPE T34-2-14XRLNB PWB

Plot reference wellpath is STATE ANTELOPE T34-2-14XRLNB PWP (REV-A.0)	Grid System: NAD83 / Lambert Colorado SP, Northern Zone (G01), US feet
True vertical depths are referenced to RIG (17KB) (RKB)	North Reference: True north
Measured depths are referenced to RIG (17KB) (RKB)	Scale: True distance
RIG (17KB) (RKB) to Mean Sea Level: 4653 feet	Depths are in feet
Mean Sea Level to Mud line (At Slot: SLOT#03 STATE ANTELOPE T34-2-14XRLNB (310°FNL & 778°FEL, SEC.11)): 0 feet	Created by: bushjmh on 2017-12-01
Coordinates are in feet referenced to Slot	Database: Denver

Location Information

Facility Name				Grid East (US ft)	Grid North (US ft)	Latitude	Longitude
SEC.11-T5N-R62W				3338687.261	1398848.454	40°25'18.709"N	104°17'00.609"W
Slot	Local N (ft)	Local E (ft)	Grid East (US ft)	Grid North (US ft)	Latitude	Longitude	
SLOT#03 STATE ANTELOPE T34-2-14XRLNB (310°FNL & 778°FEL, SEC.11)	-39.97	1.93	3338689.742	1398808.513	40°25'18.314"N	104°17'00.584"W	
RIG (17KB) (RKB) to Mud line (At Slot: SLOT#03 STATE ANTELOPE T34-2-14XRLNB (310°FNL & 778°FEL, SEC.11))						4653ft	
Mean Sea Level to Mud line (At Slot: SLOT#03 STATE ANTELOPE T34-2-14XRLNB (310°FNL & 778°FEL, SEC.11))						0ft	
RIG (17KB) (RKB) to Mean Sea Level						4653ft	

Well Profile Data

Design Comment	MD (ft)	Inc (°)	Az (°)	TVD (ft)	Local N (ft)	Local E (ft)	DLS (°/100ft)	VS (ft)
Tie On	17.00	0.000	327.943	17.00	0.00	0.00	0.00	0.00
End of Tangent	700.00	0.000	327.943	700.00	0.00	0.00	0.00	0.00
End of Build (XS)	1570.79	17.416	327.943	1557.45	111.30	-69.70	2.00	-105.26
End of Tangent (XS)	5675.74	17.416	327.943	5474.21	1152.60	-721.81	0.00	-1090.05
End of 3D Arc (XS)	6722.88	90.000	179.885	6183.00	598.19	-838.33	10.00	-528.01
End of Tangent (XS)	17330.52	90.000	179.885	6183.00	-10009.43	-817.01	0.00	10042.72

Hole and Casing Sections

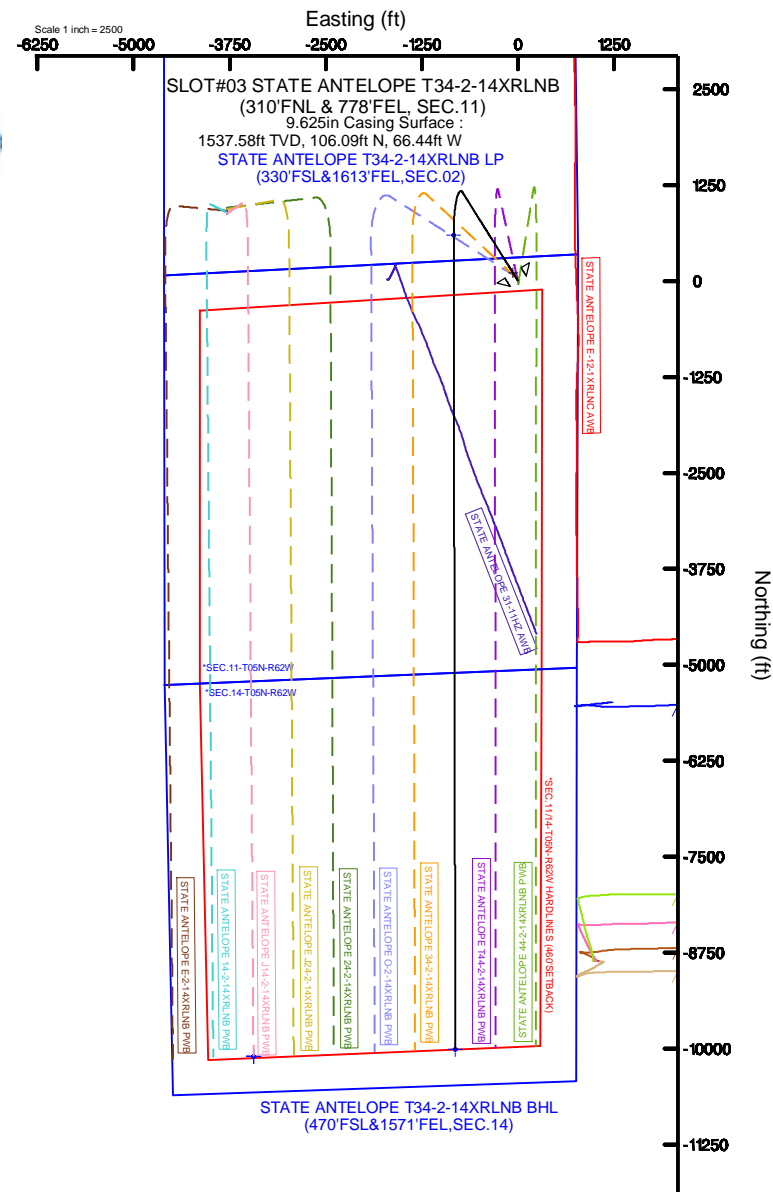
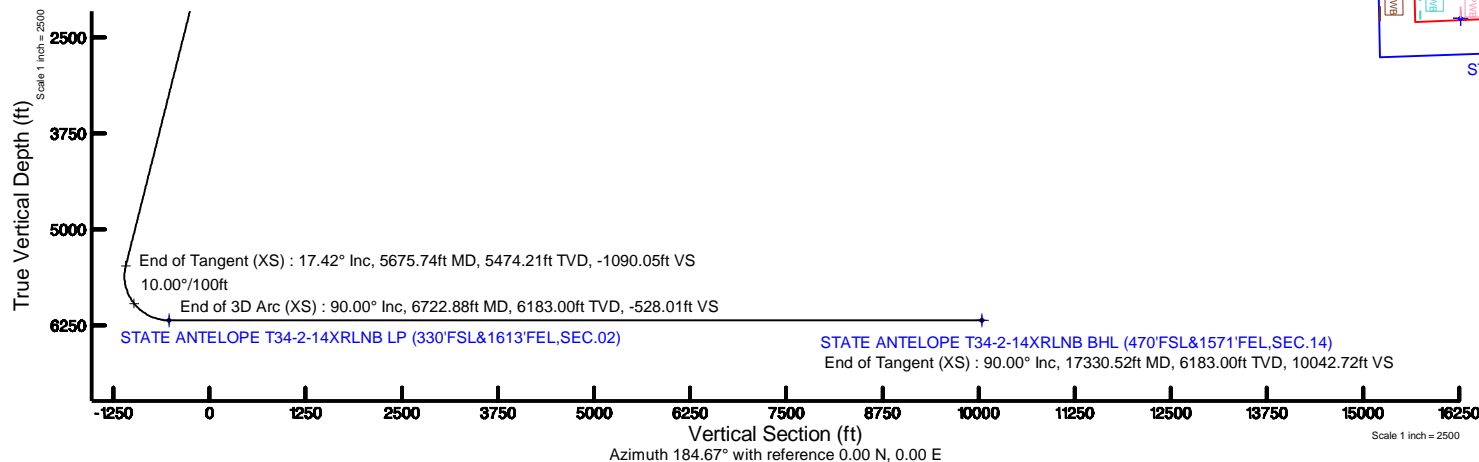
Name	Start MD (ft)	End MD (ft)	Interval (ft)	Start TVD (ft)	End TVD (ft)	Start Local N (ft)	Start Local E (ft)	End Local N (ft)	End Local E (ft)	Wellbore
9.625in Casing Surface	17.00	1550.00	1533.00	17.00	1537.58	0.00	0.00	106.09	-66.44	STATE ANTELOPE T34-2-14XRLNB PWB
8.5in Open Hole	1550.00	17330.52	15780.52	1537.58	6183.00	106.09	-66.44	-10009.43	-817.01	STATE ANTELOPE T34-2-14XRLNB PWB

Survey Program

Start MD (ft)	End MD (ft)	Tool	Model	Log Name/Comment	Wellbore
17.00	1550.00	BHI NavTrak	Custom BHI NavTrak (Standard Rotating-Axial Core) (Rockies 0.03G model)		STATE ANTELOPE T34-2-14XRLNB PWB
1550.00	17330.52	BHI AutoTrak Curve	Custom BHI AutoTrak Curve (Axial Core, Short spacing) (Rockies 0.03G model)		STATE ANTELOPE T34-2-14XRLNB PWB

Bottom Hole Location

MD (ft)	Inc (°)	Az (°)	TVD (ft)	Local N (ft)	Local E (ft)	Grid East (US ft)	Grid North (US ft)	Latitude	Longitude
17330.52	90.000	179.885	6183.00	-10009.43	-817.01	3338010.14	1388789.22	40°23'39.404"N	104°17'11.143"W



BGGM (1900.0 to 2019.0) Dip: 67.07° Field: 52889.8 nT
Magnetic North is 8.44 degrees East of True North (at 1/29/2014)

To correct azimuth from Magnetic to True add 8.44 degrees



Planned Wellpath Report

STATE ANTELOPE T34-2-14XRLNB PWP (REV-A.0)
Page 1 of 8



REFERENCE WELLPATH IDENTIFICATION

Operator	BONANZA CREEK OIL COMPANY	Slot	SLOT#03 STATE ANTELOPE T34-2-14XRLNB (310'FNL & 778'FEL, SEC.11)
Area	COLORADO	Well	STATE ANTELOPE T34-2-14XRLNB
Field	WELD COUNTY	Wellbore	STATE ANTELOPE T34-2-14XRLNB PWB
Facility	SEC.11-T5N-R62W		

REPORT SETUP INFORMATION

Projection System	NAD83 / Lambert Colorado SP, Northern Zone (501), US feet	Software System	WellArchitect® 5.0
North Reference	True	User	Ingmjmr
Scale	0.999961	Report Generated	12/1/2017 at 10:49:06 AM
Convergence at slot	0.79° East	Database/Source file	Denver/STATE_ANTELOPE_T34-2-14XRLNB_PWP__REV-A.0_.xml

WELLPATH LOCATION

	Local coordinates		Grid coordinates		Geographic coordinates	
	North[ft]	East[ft]	Easting[US ft]	Northing[US ft]	Latitude	Longitude
Slot Location	-39.97	1.93	3338689.74	1398808.51	40°25'18.314"N	104°17'00.584"W
Facility Reference Pt			3338687.26	1398848.45	40°25'18.709"N	104°17'00.609"W
Field Reference Pt			3224525.77	1254425.87	40°01'44.400"N	104°41'53.556"W

WELLPATH DATUM

Calculation method	Minimum curvature	RIG (17'KB) (RKB) to Facility Vertical Datum	4653.00ft
Horizontal Reference Pt	Slot	RIG (17'KB) (RKB) to Mean Sea Level	4653.00ft
Vertical Reference Pt	RIG (17'KB) (RKB)	RIG (17'KB) (RKB) to Mud Line at Slot (SLOT#03 STATE ANTELOPE T34-2-14XRLNB (310'FNL & 778'FEL, SEC.11))	4653.00ft
MD Reference Pt	RIG (17'KB) (RKB)	Section Origin	N 0.00, E 0.00 ft
Field Vertical Reference	Mean Sea Level	Section Azimuth	184.67°



Planned Wellpath Report

STATE ANTELOPE T34-2-14XRLNB PWP (REV-A.0)

Page 2 of 8



REFERENCE WELLPATH IDENTIFICATION			
Operator	BONANZA CREEK OIL COMPANY	Slot	SLOT#03 STATE ANTELOPE T34-2-14XRLNB (310'FNL & 778'FEL, SEC.11)
Area	COLORADO	Well	STATE ANTELOPE T34-2-14XRLNB
Field	WELD COUNTY	Wellbore	STATE ANTELOPE T34-2-14XRLNB PWB
Facility	SEC.11-T5N-R62W		

WELLPATH DATA (180 stations) † = interpolated/extrapolated station										
MD [ft]	Inclination [°]	Azimuth [°]	TVD [ft]	Vert Sect [ft]	North [ft]	East [ft]	Latitude	Longitude	DLS [°/100ft]	Comments
0.00†	0.000	327.943	0.00	0.00	0.00	0.00	40°25'18.314"N	104°17'00.584"W	0.00	
17.00	0.000	327.943	17.00	0.00	0.00	0.00	40°25'18.314"N	104°17'00.584"W	0.00	Tie On
117.00†	0.000	327.943	117.00	0.00	0.00	0.00	40°25'18.314"N	104°17'00.584"W	0.00	
217.00†	0.000	327.943	217.00	0.00	0.00	0.00	40°25'18.314"N	104°17'00.584"W	0.00	
317.00†	0.000	327.943	317.00	0.00	0.00	0.00	40°25'18.314"N	104°17'00.584"W	0.00	
417.00†	0.000	327.943	417.00	0.00	0.00	0.00	40°25'18.314"N	104°17'00.584"W	0.00	
517.00†	0.000	327.943	517.00	0.00	0.00	0.00	40°25'18.314"N	104°17'00.584"W	0.00	
617.00†	0.000	327.943	617.00	0.00	0.00	0.00	40°25'18.314"N	104°17'00.584"W	0.00	
700.00	0.000	327.943	700.00	0.00	0.00	0.00	40°25'18.314"N	104°17'00.584"W	0.00	End of Tangent
717.00†	0.340	327.943	717.00	-0.04	0.04	-0.03	40°25'18.314"N	104°17'00.584"W	2.00	
817.00†	2.340	327.943	816.97	-1.91	2.02	-1.27	40°25'18.334"N	104°17'00.600"W	2.00	
917.00†	4.340	327.943	916.79	-6.58	6.96	-4.36	40°25'18.383"N	104°17'00.640"W	2.00	
1017.00†	6.340	327.943	1016.35	-14.04	14.85	-9.30	40°25'18.461"N	104°17'00.704"W	2.00	
1117.00†	8.340	327.943	1115.53	-24.28	25.68	-16.08	40°25'18.568"N	104°17'00.792"W	2.00	
1217.00†	10.340	327.943	1214.20	-37.29	39.43	-24.69	40°25'18.704"N	104°17'00.903"W	2.00	
1317.00†	12.340	327.943	1312.24	-53.05	56.09	-35.13	40°25'18.868"N	104°17'01.038"W	2.00	
1417.00†	14.340	327.943	1409.54	-71.54	75.65	-47.37	40°25'19.062"N	104°17'01.197"W	2.00	
1517.00†	16.340	327.943	1505.97	-92.75	98.07	-61.42	40°25'19.283"N	104°17'01.378"W	2.00	
1570.79	17.416	327.943	1557.45	-105.26	111.30	-69.70	40°25'19.414"N	104°17'01.485"W	2.00	End of Build (XS)
1617.00†	17.416	327.943	1601.53	-116.35	123.03	-77.04	40°25'19.530"N	104°17'01.580"W	0.00	
1717.00†	17.416	327.943	1696.95	-140.34	148.39	-92.93	40°25'19.780"N	104°17'01.786"W	0.00	
1817.00†	17.416	327.943	1792.37	-164.33	173.76	-108.82	40°25'20.031"N	104°17'01.991"W	0.00	
1917.00†	17.416	327.943	1887.78	-188.32	199.13	-124.70	40°25'20.282"N	104°17'02.196"W	0.00	
2017.00†	17.416	327.943	1983.20	-212.31	224.49	-140.59	40°25'20.532"N	104°17'02.402"W	0.00	
2117.00†	17.416	327.943	2078.61	-236.30	249.86	-156.47	40°25'20.783"N	104°17'02.607"W	0.00	
2217.00†	17.416	327.943	2174.03	-260.29	275.23	-172.36	40°25'21.034"N	104°17'02.813"W	0.00	
2317.00†	17.416	327.943	2269.44	-284.28	300.59	-188.25	40°25'21.284"N	104°17'03.018"W	0.00	
2417.00†	17.416	327.943	2364.86	-308.27	325.96	-204.13	40°25'21.535"N	104°17'03.223"W	0.00	
2517.00†	17.416	327.943	2460.28	-332.26	351.33	-220.02	40°25'21.786"N	104°17'03.429"W	0.00	
2617.00†	17.416	327.943	2555.69	-356.25	376.69	-235.90	40°25'22.036"N	104°17'03.634"W	0.00	



Planned Wellpath Report

STATE ANTELOPE T34-2-14XRLNB PWP (REV-A.0)

Page 3 of 8



REFERENCE WELLPATH IDENTIFICATION			
Operator	BONANZA CREEK OIL COMPANY	Slot	SLOT#03 STATE ANTELOPE T34-2-14XRLNB (310'FNL & 778'FEL, SEC.11)
Area	COLORADO	Well	STATE ANTELOPE T34-2-14XRLNB
Field	WELD COUNTY	Wellbore	STATE ANTELOPE T34-2-14XRLNB PWB
Facility	SEC.11-T5N-R62W		

WELLPATH DATA (180 stations) † = interpolated/extrapolated station										
MD [ft]	Inclination [°]	Azimuth [°]	TVD [ft]	Vert Sect [ft]	North [ft]	East [ft]	Latitude	Longitude	DLS [°/100ft]	Comments
2717.00†	17.416	327.943	2651.11	-380.24	402.06	-251.79	40°25'22.287"N	104°17'03.840"W	0.00	
2817.00†	17.416	327.943	2746.52	-404.23	427.43	-267.68	40°25'22.538"N	104°17'04.045"W	0.00	
2917.00†	17.416	327.943	2841.94	-428.22	452.79	-283.56	40°25'22.788"N	104°17'04.250"W	0.00	
3017.00†	17.416	327.943	2937.35	-452.21	478.16	-299.45	40°25'23.039"N	104°17'04.456"W	0.00	
3117.00†	17.416	327.943	3032.77	-476.20	503.53	-315.33	40°25'23.290"N	104°17'04.661"W	0.00	
3217.00†	17.416	327.943	3128.19	-500.19	528.89	-331.22	40°25'23.540"N	104°17'04.867"W	0.00	
3317.00†	17.416	327.943	3223.60	-524.18	554.26	-347.11	40°25'23.791"N	104°17'05.072"W	0.00	
3417.00†	17.416	327.943	3319.02	-548.18	579.63	-362.99	40°25'24.042"N	104°17'05.277"W	0.00	
3517.00†	17.416	327.943	3414.43	-572.17	604.99	-378.88	40°25'24.292"N	104°17'05.483"W	0.00	
3617.00†	17.416	327.943	3509.85	-596.16	630.36	-394.76	40°25'24.543"N	104°17'05.688"W	0.00	
3717.00†	17.416	327.943	3605.26	-620.15	655.73	-410.65	40°25'24.794"N	104°17'05.894"W	0.00	
3817.00†	17.416	327.943	3700.68	-644.14	681.09	-426.54	40°25'25.044"N	104°17'06.099"W	0.00	
3917.00†	17.416	327.943	3796.10	-668.13	706.46	-442.42	40°25'25.295"N	104°17'06.304"W	0.00	
4017.00†	17.416	327.943	3891.51	-692.12	731.83	-458.31	40°25'25.546"N	104°17'06.510"W	0.00	
4117.00†	17.416	327.943	3986.93	-716.11	757.19	-474.19	40°25'25.796"N	104°17'06.715"W	0.00	
4217.00†	17.416	327.943	4082.34	-740.10	782.56	-490.08	40°25'26.047"N	104°17'06.921"W	0.00	
4317.00†	17.416	327.943	4177.76	-764.09	807.93	-505.97	40°25'26.298"N	104°17'07.126"W	0.00	
4417.00†	17.416	327.943	4273.17	-788.08	833.29	-521.85	40°25'26.548"N	104°17'07.332"W	0.00	
4517.00†	17.416	327.943	4368.59	-812.07	858.66	-537.74	40°25'26.799"N	104°17'07.537"W	0.00	
4617.00†	17.416	327.943	4464.01	-836.06	884.03	-553.62	40°25'27.050"N	104°17'07.742"W	0.00	
4717.00†	17.416	327.943	4559.42	-860.05	909.40	-569.51	40°25'27.300"N	104°17'07.948"W	0.00	
4817.00†	17.416	327.943	4654.84	-884.04	934.76	-585.40	40°25'27.551"N	104°17'08.153"W	0.00	
4917.00†	17.416	327.943	4750.25	-908.03	960.13	-601.28	40°25'27.802"N	104°17'08.359"W	0.00	
5017.00†	17.416	327.943	4845.67	-932.02	985.50	-617.17	40°25'28.052"N	104°17'08.564"W	0.00	
5117.00†	17.416	327.943	4941.09	-956.01	1010.86	-633.05	40°25'28.303"N	104°17'08.769"W	0.00	
5217.00†	17.416	327.943	5036.50	-980.00	1036.23	-648.94	40°25'28.554"N	104°17'08.975"W	0.00	
5317.00†	17.416	327.943	5131.92	-1003.99	1061.60	-664.83	40°25'28.804"N	104°17'09.180"W	0.00	
5417.00†	17.416	327.943	5227.33	-1027.98	1086.96	-680.71	40°25'29.055"N	104°17'09.386"W	0.00	
5517.00†	17.416	327.943	5322.75	-1051.97	1112.33	-696.60	40°25'29.305"N	104°17'09.591"W	0.00	
5617.00†	17.416	327.943	5418.16	-1075.96	1137.70	-712.48	40°25'29.556"N	104°17'09.796"W	0.00	



Planned Wellpath Report

STATE ANTELOPE T34-2-14XRLNB PWP (REV-A.0)

Page 4 of 8



REFERENCE WELLPATH IDENTIFICATION			
Operator	BONANZA CREEK OIL COMPANY	Slot	SLOT#03 STATE ANTELOPE T34-2-14XRLNB (310'FNL & 778'FEL, SEC.11)
Area	COLORADO	Well	STATE ANTELOPE T34-2-14XRLNB
Field	WELD COUNTY	Wellbore	STATE ANTELOPE T34-2-14XRLNB PWB
Facility	SEC.11-T5N-R62W		

WELLPATH DATA (180 stations) † = interpolated/extrapolated station										
MD [ft]	Inclination [°]	Azimuth [°]	TVD [ft]	Vert Sect [ft]	North [ft]	East [ft]	Latitude	Longitude	DLS [°/100ft]	Comments
5675.74	17.416	327.943	5474.21	-1090.05	1152.60	-721.81	40°25'29.703"N	104°17'09.917"W	0.00	End of Tangent (XS)
5717.00†	14.138	318.671	5513.92	-1098.51	1161.62	-728.42	40°25'29.793"N	104°17'10.003"W	10.00	
5817.00†	9.441	273.470	5611.97	-1106.84	1171.31	-744.72	40°25'29.888"N	104°17'10.213"W	10.00	
5917.00†	13.288	224.528	5710.21	-1097.83	1163.59	-761.00	40°25'29.812"N	104°17'10.424"W	10.00	
6017.00†	21.499	204.804	5805.63	-1071.73	1138.70	-776.79	40°25'29.566"N	104°17'10.628"W	10.00	
6117.00†	30.756	196.079	5895.35	-1029.36	1097.40	-791.59	40°25'29.158"N	104°17'10.819"W	10.00	
6217.00†	40.344	191.152	5976.63	-971.99	1040.93	-804.97	40°25'28.600"N	104°17'10.992"W	10.00	
6317.00†	50.071	187.869	6047.01	-901.37	971.01	-816.51	40°25'27.909"N	104°17'11.142"W	10.00	
6417.00†	59.868	185.412	6104.35	-819.64	889.77	-825.86	40°25'27.106"N	104°17'11.262"W	10.00	
6517.00†	69.702	183.404	6146.90	-729.28	799.68	-832.74	40°25'26.216"N	104°17'11.351"W	10.00	
6617.00†	79.557	181.638	6173.38	-633.05	703.47	-836.94	40°25'25.265"N	104°17'11.406"W	10.00	
6717.00†	89.420	179.981	6182.97	-533.87	604.07	-838.34	40°25'24.283"N	104°17'11.424"W	10.00	
6722.88	90.000	179.885	6183.00†	-528.01	598.19	-838.33	40°25'24.225"N	104°17'11.423"W	10.00	End of 3D Arc (XS)
6817.00†	90.000	179.885	6183.00	-434.21	504.07	-838.14	40°25'23.295"N	104°17'11.421"W	0.00	
6917.00†	90.000	179.885	6183.00	-334.56	404.07	-837.94	40°25'22.307"N	104°17'11.418"W	0.00	
7017.00†	90.000	179.885	6183.00	-234.91	304.07	-837.74	40°25'21.319"N	104°17'11.416"W	0.00	
7117.00†	90.000	179.885	6183.00	-135.26	204.07	-837.54	40°25'20.330"N	104°17'11.413"W	0.00	
7217.00†	90.000	179.885	6183.00	-35.61	104.07	-837.34	40°25'19.342"N	104°17'11.410"W	0.00	
7317.00†	90.000	179.885	6183.00	64.05	4.07	-837.14	40°25'18.354"N	104°17'11.408"W	0.00	
7417.00†	90.000	179.885	6183.00	163.70	-95.93	-836.93	40°25'17.366"N	104°17'11.405"W	0.00	
7517.00†	90.000	179.885	6183.00	263.35	-195.93	-836.73	40°25'16.378"N	104°17'11.402"W	0.00	
7617.00†	90.000	179.885	6183.00	363.00	-295.93	-836.53	40°25'15.390"N	104°17'11.400"W	0.00	
7717.00†	90.000	179.885	6183.00	462.65	-395.93	-836.33	40°25'14.401"N	104°17'11.397"W	0.00	
7817.00†	90.000	179.885	6183.00	562.31	-495.93	-836.13	40°25'13.413"N	104°17'11.395"W	0.00	
7917.00†	90.000	179.885	6183.00	661.96	-595.93	-835.93	40°25'12.425"N	104°17'11.392"W	0.00	
8017.00†	90.000	179.885	6183.00	761.61	-695.93	-835.73	40°25'11.437"N	104°17'11.389"W	0.00	
8117.00†	90.000	179.885	6183.00	861.26	-795.93	-835.53	40°25'10.449"N	104°17'11.387"W	0.00	
8217.00†	90.000	179.885	6183.00	960.91	-895.93	-835.33	40°25'09.461"N	104°17'11.384"W	0.00	
8317.00†	90.000	179.885	6183.00	1060.57	-995.93	-835.13	40°25'08.473"N	104°17'11.381"W	0.00	
8417.00†	90.000	179.885	6183.00	1160.22	-1095.93	-834.93	40°25'07.484"N	104°17'11.379"W	0.00	



Planned Wellpath Report

STATE ANTELOPE T34-2-14XRLNB PWP (REV-A.0)

Page 5 of 8



REFERENCE WELLPATH IDENTIFICATION			
Operator	BONANZA CREEK OIL COMPANY	Slot	SLOT#03 STATE ANTELOPE T34-2-14XRLNB (310'FNL & 778'FEL, SEC.11)
Area	COLORADO	Well	STATE ANTELOPE T34-2-14XRLNB
Field	WELD COUNTY	Wellbore	STATE ANTELOPE T34-2-14XRLNB PWB
Facility	SEC.11-T5N-R62W		

WELLPATH DATA (180 stations) † = interpolated/extrapolated station										
MD [ft]	Inclination [°]	Azimuth [°]	TVD [ft]	Vert Sect [ft]	North [ft]	East [ft]	Latitude	Longitude	DLS [°/100ft]	Comments
8517.00†	90.000	179.885	6183.00	1259.87	-1195.93	-834.72	40°25'06.496"N	104°17'11.376"W	0.00	
8617.00†	90.000	179.885	6183.00	1359.52	-1295.93	-834.52	40°25'05.508"N	104°17'11.373"W	0.00	
8717.00†	90.000	179.885	6183.00	1459.17	-1395.93	-834.32	40°25'04.520"N	104°17'11.371"W	0.00	
8817.00†	90.000	179.885	6183.00	1558.83	-1495.93	-834.12	40°25'03.532"N	104°17'11.368"W	0.00	
8917.00†	90.000	179.885	6183.00	1658.48	-1595.93	-833.92	40°25'02.544"N	104°17'11.366"W	0.00	
9017.00†	90.000	179.885	6183.00	1758.13	-1695.93	-833.72	40°25'01.555"N	104°17'11.363"W	0.00	
9117.00†	90.000	179.885	6183.00	1857.78	-1795.93	-833.52	40°25'00.567"N	104°17'11.360"W	0.00	
9217.00†	90.000	179.885	6183.00	1957.43	-1895.93	-833.32	40°24'59.579"N	104°17'11.358"W	0.00	
9317.00†	90.000	179.885	6183.00	2057.09	-1995.92	-833.12	40°24'58.591"N	104°17'11.355"W	0.00	
9417.00†	90.000	179.885	6183.00	2156.74	-2095.92	-832.92	40°24'57.603"N	104°17'11.352"W	0.00	
9517.00†	90.000	179.885	6183.00	2256.39	-2195.92	-832.72	40°24'56.615"N	104°17'11.350"W	0.00	
9617.00†	90.000	179.885	6183.00	2356.04	-2295.92	-832.51	40°24'55.626"N	104°17'11.347"W	0.00	
9717.00†	90.000	179.885	6183.00	2455.69	-2395.92	-832.31	40°24'54.638"N	104°17'11.344"W	0.00	
9817.00†	90.000	179.885	6183.00	2555.35	-2495.92	-832.11	40°24'53.650"N	104°17'11.342"W	0.00	
9917.00†	90.000	179.885	6183.00	2655.00	-2595.92	-831.91	40°24'52.662"N	104°17'11.339"W	0.00	
10017.00†	90.000	179.885	6183.00	2754.65	-2695.92	-831.71	40°24'51.674"N	104°17'11.336"W	0.00	
10117.00†	90.000	179.885	6183.00	2854.30	-2795.92	-831.51	40°24'50.686"N	104°17'11.334"W	0.00	
10217.00†	90.000	179.885	6183.00	2953.95	-2895.92	-831.31	40°24'49.697"N	104°17'11.331"W	0.00	
10317.00†	90.000	179.885	6183.00	3053.61	-2995.92	-831.11	40°24'48.709"N	104°17'11.329"W	0.00	
10417.00†	90.000	179.885	6183.00	3153.26	-3095.92	-830.91	40°24'47.721"N	104°17'11.326"W	0.00	
10517.00†	90.000	179.885	6183.00	3252.91	-3195.92	-830.71	40°24'46.733"N	104°17'11.323"W	0.00	
10617.00†	90.000	179.885	6183.00	3352.56	-3295.92	-830.50	40°24'45.745"N	104°17'11.321"W	0.00	
10717.00†	90.000	179.885	6183.00	3452.21	-3395.92	-830.30	40°24'44.757"N	104°17'11.318"W	0.00	
10817.00†	90.000	179.885	6183.00	3551.87	-3495.92	-830.10	40°24'43.769"N	104°17'11.315"W	0.00	
10917.00†	90.000	179.885	6183.00	3651.52	-3595.92	-829.90	40°24'42.780"N	104°17'11.313"W	0.00	
11017.00†	90.000	179.885	6183.00	3751.17	-3695.92	-829.70	40°24'41.792"N	104°17'11.310"W	0.00	
11117.00†	90.000	179.885	6183.00	3850.82	-3795.92	-829.50	40°24'40.804"N	104°17'11.307"W	0.00	
11217.00†	90.000	179.885	6183.00	3950.47	-3895.92	-829.30	40°24'39.816"N	104°17'11.305"W	0.00	
11317.00†	90.000	179.885	6183.00	4050.13	-3995.92	-829.10	40°24'38.828"N	104°17'11.302"W	0.00	
11417.00†	90.000	179.885	6183.00	4149.78	-4095.92	-828.90	40°24'37.840"N	104°17'11.299"W	0.00	



Planned Wellpath Report

STATE ANTELOPE T34-2-14XRLNB PWP (REV-A.0)

Page 6 of 8



REFERENCE WELLPATH IDENTIFICATION			
Operator	BONANZA CREEK OIL COMPANY	Slot	SLOT#03 STATE ANTELOPE T34-2-14XRLNB (310'FNL & 778'FEL, SEC.11)
Area	COLORADO	Well	STATE ANTELOPE T34-2-14XRLNB
Field	WELD COUNTY	Wellbore	STATE ANTELOPE T34-2-14XRLNB PWB
Facility	SEC.11-T5N-R62W		

WELLPATH DATA (180 stations) † = interpolated/extrapolated station										Comments
MD [ft]	Inclination [°]	Azimuth [°]	TVD [ft]	Vert Sect [ft]	North [ft]	East [ft]	Latitude	Longitude	DLS [°/100ft]	
11517.00†	90.000	179.885	6183.00	4249.43	-4195.92	-828.70	40°24'36.851"N	104°17'11.297"W	0.00	
11617.00†	90.000	179.885	6183.00	4349.08	-4295.92	-828.50	40°24'35.863"N	104°17'11.294"W	0.00	
11717.00†	90.000	179.885	6183.00	4448.73	-4395.92	-828.29	40°24'34.875"N	104°17'11.292"W	0.00	
11817.00†	90.000	179.885	6183.00	4548.39	-4495.92	-828.09	40°24'33.887"N	104°17'11.289"W	0.00	
11917.00†	90.000	179.885	6183.00	4648.04	-4595.92	-827.89	40°24'32.899"N	104°17'11.286"W	0.00	
12017.00†	90.000	179.885	6183.00	4747.69	-4695.92	-827.69	40°24'31.911"N	104°17'11.284"W	0.00	
12117.00†	90.000	179.885	6183.00	4847.34	-4795.92	-827.49	40°24'30.922"N	104°17'11.281"W	0.00	
12217.00†	90.000	179.885	6183.00	4946.99	-4895.92	-827.29	40°24'29.934"N	104°17'11.278"W	0.00	
12317.00†	90.000	179.885	6183.00	5046.65	-4995.92	-827.09	40°24'28.946"N	104°17'11.276"W	0.00	
12417.00†	90.000	179.885	6183.00	5146.30	-5095.92	-826.89	40°24'27.958"N	104°17'11.273"W	0.00	
12517.00†	90.000	179.885	6183.00	5245.95	-5195.92	-826.69	40°24'26.970"N	104°17'11.270"W	0.00	
12617.00†	90.000	179.885	6183.00	5345.60	-5295.92	-826.49	40°24'25.982"N	104°17'11.268"W	0.00	
12717.00†	90.000	179.885	6183.00	5445.25	-5395.92	-826.28	40°24'24.993"N	104°17'11.265"W	0.00	
12817.00†	90.000	179.885	6183.00	5544.91	-5495.92	-826.08	40°24'24.005"N	104°17'11.263"W	0.00	
12917.00†	90.000	179.885	6183.00	5644.56	-5595.92	-825.88	40°24'23.017"N	104°17'11.260"W	0.00	
13017.00†	90.000	179.885	6183.00	5744.21	-5695.92	-825.68	40°24'22.029"N	104°17'11.257"W	0.00	
13117.00†	90.000	179.885	6183.00	5843.86	-5795.92	-825.48	40°24'21.041"N	104°17'11.255"W	0.00	
13217.00†	90.000	179.885	6183.00	5943.51	-5895.92	-825.28	40°24'20.053"N	104°17'11.252"W	0.00	
13317.00†	90.000	179.885	6183.00	6043.17	-5995.92	-825.08	40°24'19.065"N	104°17'11.249"W	0.00	
13417.00†	90.000	179.885	6183.00	6142.82	-6095.92	-824.88	40°24'18.076"N	104°17'11.247"W	0.00	
13517.00†	90.000	179.885	6183.00	6242.47	-6195.92	-824.68	40°24'17.088"N	104°17'11.244"W	0.00	
13617.00†	90.000	179.885	6183.00	6342.12	-6295.92	-824.48	40°24'16.100"N	104°17'11.241"W	0.00	
13717.00†	90.000	179.885	6183.00	6441.77	-6395.92	-824.28	40°24'15.112"N	104°17'11.239"W	0.00	
13817.00†	90.000	179.885	6183.00	6541.43	-6495.92	-824.07	40°24'14.124"N	104°17'11.236"W	0.00	
13917.00†	90.000	179.885	6183.00	6641.08	-6595.92	-823.87	40°24'13.136"N	104°17'11.233"W	0.00	
14017.00†	90.000	179.885	6183.00	6740.73	-6695.92	-823.67	40°24'12.147"N	104°17'11.231"W	0.00	
14117.00†	90.000	179.885	6183.00	6840.38	-6795.92	-823.47	40°24'11.159"N	104°17'11.228"W	0.00	
14217.00†	90.000	179.885	6183.00	6940.03	-6895.91	-823.27	40°24'10.171"N	104°17'11.226"W	0.00	
14317.00†	90.000	179.885	6183.00	7039.69	-6995.91	-823.07	40°24'09.183"N	104°17'11.223"W	0.00	
14417.00†	90.000	179.885	6183.00	7139.34	-7095.91	-822.87	40°24'08.195"N	104°17'11.220"W	0.00	



Planned Wellpath Report

STATE ANTELOPE T34-2-14XRLNB PWP (REV-A.0)

Page 7 of 8



REFERENCE WELLPATH IDENTIFICATION			
Operator	BONANZA CREEK OIL COMPANY	Slot	SLOT#03 STATE ANTELOPE T34-2-14XRLNB (310'FNL & 778'FEL, SEC.11)
Area	COLORADO	Well	STATE ANTELOPE T34-2-14XRLNB
Field	WELD COUNTY	Wellbore	STATE ANTELOPE T34-2-14XRLNB PWB
Facility	SEC.11-T5N-R62W		

WELLPATH DATA (180 stations) † = interpolated/extrapolated station										
MD [ft]	Inclination [°]	Azimuth [°]	TVD [ft]	Vert Sect [ft]	North [ft]	East [ft]	Latitude	Longitude	DLS [°/100ft]	Comments
14517.00†	90.000	179.885	6183.00	7238.99	-7195.91	-822.67	40°24'07.207"N	104°17'11.218"W	0.00	
14617.00†	90.000	179.885	6183.00	7338.64	-7295.91	-822.47	40°24'06.218"N	104°17'11.215"W	0.00	
14717.00†	90.000	179.885	6183.00	7438.29	-7395.91	-822.27	40°24'05.230"N	104°17'11.212"W	0.00	
14817.00†	90.000	179.885	6183.00	7537.95	-7495.91	-822.07	40°24'04.242"N	104°17'11.210"W	0.00	
14917.00†	90.000	179.885	6183.00	7637.60	-7595.91	-821.86	40°24'03.254"N	104°17'11.207"W	0.00	
15017.00†	90.000	179.885	6183.00	7737.25	-7695.91	-821.66	40°24'02.266"N	104°17'11.204"W	0.00	
15117.00†	90.000	179.885	6183.00	7836.90	-7795.91	-821.46	40°24'01.278"N	104°17'11.202"W	0.00	
15217.00†	90.000	179.885	6183.00	7936.55	-7895.91	-821.26	40°24'00.289"N	104°17'11.199"W	0.00	
15317.00†	90.000	179.885	6183.00	8036.20	-7995.91	-821.06	40°23'59.301"N	104°17'11.196"W	0.00	
15417.00†	90.000	179.885	6183.00	8135.86	-8095.91	-820.86	40°23'58.313"N	104°17'11.194"W	0.00	
15517.00†	90.000	179.885	6183.00	8235.51	-8195.91	-820.66	40°23'57.325"N	104°17'11.191"W	0.00	
15617.00†	90.000	179.885	6183.00	8335.16	-8295.91	-820.46	40°23'56.337"N	104°17'11.189"W	0.00	
15717.00†	90.000	179.885	6183.00	8434.81	-8395.91	-820.26	40°23'55.349"N	104°17'11.186"W	0.00	
15817.00†	90.000	179.885	6183.00	8534.46	-8495.91	-820.06	40°23'54.360"N	104°17'11.183"W	0.00	
15917.00†	90.000	179.885	6183.00	8634.12	-8595.91	-819.85	40°23'53.372"N	104°17'11.181"W	0.00	
16017.00†	90.000	179.885	6183.00	8733.77	-8695.91	-819.65	40°23'52.384"N	104°17'11.178"W	0.00	
16117.00†	90.000	179.885	6183.00	8833.42	-8795.91	-819.45	40°23'51.396"N	104°17'11.175"W	0.00	
16217.00†	90.000	179.885	6183.00	8933.07	-8895.91	-819.25	40°23'50.408"N	104°17'11.173"W	0.00	
16317.00†	90.000	179.885	6183.00	9032.72	-8995.91	-819.05	40°23'49.420"N	104°17'11.170"W	0.00	
16417.00†	90.000	179.885	6183.00	9132.38	-9095.91	-818.85	40°23'48.431"N	104°17'11.167"W	0.00	
16517.00†	90.000	179.885	6183.00	9232.03	-9195.91	-818.65	40°23'47.443"N	104°17'11.165"W	0.00	
16617.00†	90.000	179.885	6183.00	9331.68	-9295.91	-818.45	40°23'46.455"N	104°17'11.162"W	0.00	
16717.00†	90.000	179.885	6183.00	9431.33	-9395.91	-818.25	40°23'45.467"N	104°17'11.160"W	0.00	
16817.00†	90.000	179.885	6183.00	9530.98	-9495.91	-818.05	40°23'44.479"N	104°17'11.157"W	0.00	
16917.00†	90.000	179.885	6183.00	9630.64	-9595.91	-817.85	40°23'43.491"N	104°17'11.154"W	0.00	
17017.00†	90.000	179.885	6183.00	9730.29	-9695.91	-817.64	40°23'42.502"N	104°17'11.152"W	0.00	
17117.00†	90.000	179.885	6183.00	9829.94	-9795.91	-817.44	40°23'41.514"N	104°17'11.149"W	0.00	
17217.00†	90.000	179.885	6183.00	9929.59	-9895.91	-817.24	40°23'40.526"N	104°17'11.146"W	0.00	
17317.00†	90.000	179.885	6183.00	10029.24	-9995.91	-817.04	40°23'39.538"N	104°17'11.144"W	0.00	
17330.52	90.000	179.885	6183.00 ²	10042.72	-10009.43	-817.01	40°23'39.404"N	104°17'11.143"W	0.00	End of Tangent (XS)

HOLE & CASING SECTIONS									
- Ref Wellbore: STATE ANTELOPE T34-2-14XRLNB PWB Ref Wellpath: STATE ANTELOPE T34-2-14XRLNB PWP (REV-A.0)									
String/Diameter	Start MD [ft]	End MD [ft]	Interval [ft]	Start TVD [ft]	End TVD [ft]	Start N/S [ft]	Start E/W [ft]	End N/S [ft]	End E/W [ft]
9.625in Casing Surface	17.00	1550.00	1533.00	17.00	1537.58	0.00	0.00	106.09	-66.44
8.5in Open Hole	1550.00	17330.52	15780.52	1537.58	6183.00	106.09	-66.44	-10009.43	-817.01

TARGETS									
Name	MD [ft]	TVD [ft]	North [ft]	East [ft]	Grid East [US ft]	Grid North [US ft]	Latitude	Longitude	Shape
*SEC.02-T05N-R62W		29.00	4070.16	-4271.38	3334363.11	1402819.53	40°25'58.530"N	104°17'55.820"W	polygon
*SEC.11-T05N-R62W		29.00	-10100.53	-3441.67	3335387.09	1388662.13	40°23'38.502"N	104°17'45.065"W	polygon
*SEC.14-T05N-R62W		29.00	-10100.53	-3441.67	3335387.09	1388662.13	40°23'38.502"N	104°17'45.065"W	polygon
2) STATE ANTELOPE T34-2-14XRLNB BHL (470'FSL&1571'FEL,SEC.14)	17330.52	6183.00	-10009.43	-817.01	3338010.14	1388789.22	40°23'39.404"N	104°17'11.143"W	point
1) STATE ANTELOPE T34-2-14XRLNB LP (330'FSL&1613'FEL,SEC.02)	6722.88	6183.00	598.19	-838.33	3337843.32	1399395.12	40°25'24.225"N	104°17'11.423"W	point
*SEC.11/14-T05N-R62W HARDLINES (460'SETBACK)		6213.00	-10100.53	-3441.67	3335387.09	1388662.13	40°23'38.502"N	104°17'45.065"W	polygon

SURVEY PROGRAM - Ref Wellbore: STATE ANTELOPE T34-2-14XRLNB PWB Ref Wellpath: STATE ANTELOPE T34-2-14XRLNB PWP (REV-A.0)				
Start MD [ft]	End MD [ft]	Positional Uncertainty Model	Log Name/Comment	Wellbore
17.00	1550.00	Custom BHI NaviTrak (Standard Rotating+Axial Corr) (Rockies 0.03Gt model)		STATE ANTELOPE T34-2-14XRLNB PWB
1550.00	17330.52	Custom BHI AutoTrak Curve (Axial Corr, Short spacing) (Rockies 0.03Gt model)		STATE ANTELOPE T34-2-14XRLNB PWB



Planned Wellpath Report

STATE ANTELOPE T34-2-14XRLNB PWP (REV-A.0)

Page 8 of 8



REFERENCE WELLPATH IDENTIFICATION			
Operator	BONANZA CREEK OIL COMPANY	Slot	SLOT#03 STATE ANTELOPE T34-2-14XRLNB (310'FNL & 778'FEL, SEC.11)
Area	COLORADO	Well	STATE ANTELOPE T34-2-14XRLNB
Field	WELD COUNTY	Wellbore	STATE ANTELOPE T34-2-14XRLNB PWB
Facility	SEC.11-T5N-R62W		

DESIGN COMMENTS				
MD [ft]	Inclination [°]	Azimuth [°]	TVD [ft]	Comment
17.00	0.000	327.943	17.00	Tie On
700.00	0.000	327.943	700.00	End of Tangent
1570.79	17.416	327.943	1557.45	End of Build (XS)
5675.74	17.416	327.943	5474.21	End of Tangent (XS)
6722.88	90.000	179.885	6183.00	End of 3D Arc (XS)
17330.52	90.000	179.885	6183.00	End of Tangent (XS)