



410 17th Street, Suite 1400
Denver, CO 80202
(720) 440-6100 phone
(720) 305-0804 fax

Bonanzacrk.com

January 11, 2018

State of Colorado
Oil and Gas Conservation Commission
1120 Lincoln Street, Suite 801
Denver, CO 80203

RE: Proposed Wellbore Spacing Unit
State Antelope T34-2-14XRLNB
Niobrara New Drill
NENE Section 11, Township 5N, Range 62W, 6th PM
Weld County, Colorado

Dear Director Lepore,

Bonanza Creek Energy Operating Company, LLC. ("Bonanza Creek") is planning to drill the above captioned well in accordance with the provisions of Colorado Oil and Gas Conservation Commission (COGCC) Rule 318A.e.

Bonanza Creek's proposed wellbore spacing unit consists of:

Township 5N, Range 62W (Weld County):
Section 2: S2SE
Section 11: E2
Section 14: E2

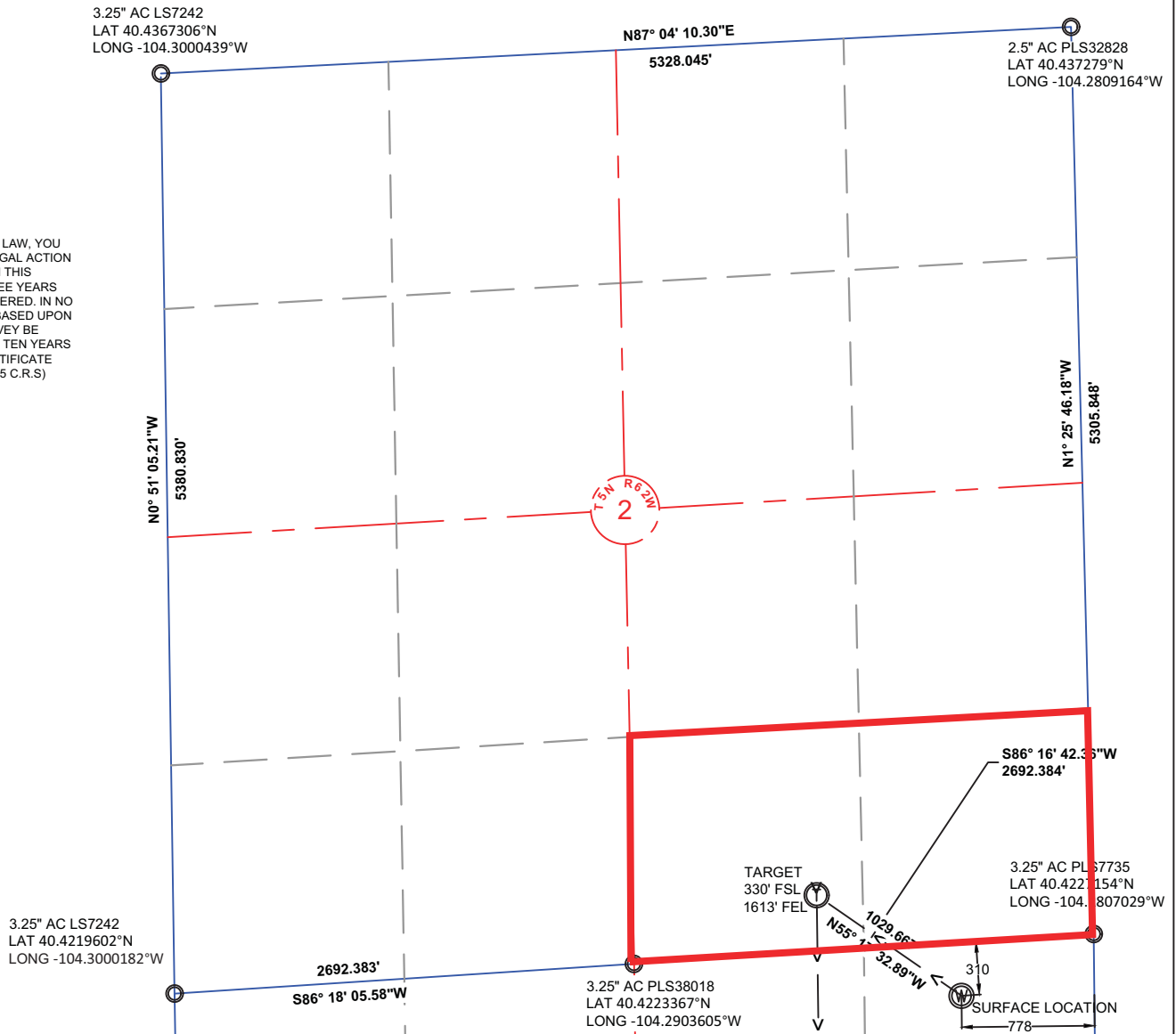
Total acres: 720ac

The 30 day notification time period has passed and we have not yet received any objections to such well locations or proposed spacing unit, therefore Bonanza Creek hereby requests the Director to approve the above mentioned well. Bonanza Creek respectfully requests the COGCC review the enclosed map illustrating the proposed wellbore spacing unit.

Regards,
Bonanza Creek Energy Operating Company, LLC.

Brian Dodek, P.G.
Manager – Environmental & Regulatory Compliance

NOTE: UNDER COLORADO LAW, YOU MUST COMMENCE ANY LEGAL ACTION BASED ON ANY DEFECT IN THIS CERTIFICATE WITHIN THREE YEARS AFTER DEFECT IS DISCOVERED. IN NO EVENT MAY ANY ACTION BASED UPON ANY DEFECT IN THIS SURVEY BE COMMENCED MORE THAN TEN YEARS AFTER DATE OF THIS CERTIFICATE SHOWN HEREON. (13-80105 C.R.S.)



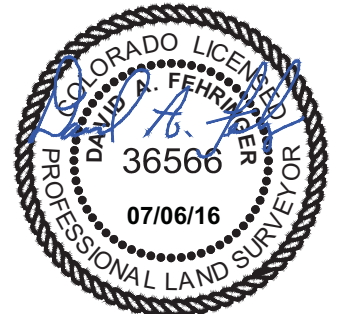
NOTES:

- ALL BEARINGS ARE GRID BASED UPON THE COLORADO STATE PLANE COORDINATE SYSTEM, NORTH ZONE, NAD83(2011) DERIVED FROM POST-PROCESSED STATIC GPS OBSERVATIONS.
- DISTANCES ARE ON GRID
- VERTICAL DATUM IS NAVD88 BASED UPON GPS OBSERVATIONS
- PDOP VALUE EQUALS 2.2.
- GPS OPERATOR: DAVE FEHRINGER.
- GROUND ELEVATION AT WELLHEAD = 4636'
- ALL SECTION LENGTHS ARE MEASURED DISTANCES UNLESS NOTED BY (R), RECORD BEARING AND DISTANCE.
- NEAREST CULTURAL DISTANCES
 - BUILDINGS: 5280' +/-
 - BUILDING UNIT: 5280' +/-
 - HIGH OCCUPANCY BUILDING UNIT: 5280' +/-
 - DESIGNATED OUTSIDE ACTIVITY AREA: 5280' +/-
 - PUBLIC ROAD: 5280' +/-
 - ABOVE GROUND UTILITY: 933' +/-
 - RAILROAD: 5280' +/-
 - PROPERTY LINE: 310' +/-

3	NAD 83		STATE PLANE COORDINATES	
T34-2-14XRLNB	LATITUDE	LONGITUDE	NORTHING	EASTING
SURFACE	40.4217539	-104.2834956	1398808.52	3338689.72
TARGET 1	40.4233949	-104.2865068	1399394.80	3337843.26
MID LATERAL	40.4077390	-104.2865190	1393691.87	3337917.90
BOTTOM HOLE	40.3942790	-104.2864289	1388789.23	3338010.08

CERTIFICATE OF SURVEYOR:

I, DAVID A. FEHRINGER OF LANDER, WYOMING HEREBY CERTIFY THAT THIS WELL LOCATION CERTIFICATE WAS PREPARED FROM NOTES TAKEN DURING AN ACTUAL SURVEY ON JUNE 27, 2016; AND THAT IT CORRECTLY SHOWS THE DRILLING LOCATION OF BONANZA CREEK ENERGY, INC. STATE ANTELOPE T34-2-14XRLNB AS STAKED DURING SAID SURVEY. THIS MAP DOES NOT REPRESENT A BOUNDARY SURVEY OR AN IMPROVEMENT LOCATION PLAT AND SHOULD NOT BE USED FOR THE ESTABLISHMENT OF BOUNDARY LINES.

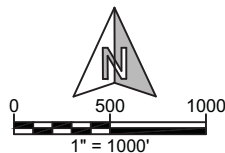


PAD CORNERS	NAD 83	
SA 41-11 PAD	LATITUDE	LONGITUDE
NW	40.422281	-104.2841045
NE	40.4223435	-104.2824184
SE	40.4212468	-104.2823487
SW	40.4211843	-104.2840348



WILLIAM H. SMITH & ASSOCIATES, Inc.
155 N. 1st Street
Lander, WY 82520
Phone: 307-335-5646

Drawn By: MAM
Job No.: 15043
Checked By: DAF
Date: 06/22/16
Revision: RE-ORDERED/ADDED WELLS 12-05-17 MAM



IF BAR LENGTH DOES NOT EQUAL 1" (ONE INCH), THIS PAGE WAS NOT PLOTTED TO THE INTENDED SCALE.

LOCATION CERTIFICATE

**STATE ANTELOPE
T34-2-14XRLNB
SURFACE**
NE 1/4 NE 1/4, SECTION 11,
T.5N., R.62W., 6th PM
WELD COUNTY, COLORADO



410 17th Street
Denver, CO 80202
(720) 440-6100

SHEET
1
OF
3

NOTE: UNDER COLORADO LAW, YOU MUST COMMENCE ANY LEGAL ACTION BASED ON ANY DEFECT IN THIS CERTIFICATE WITHIN THREE YEARS AFTER DEFECT IS DISCOVERED. IN NO EVENT MAY ANY ACTION BASED UPON ANY DEFECT IN THIS SURVEY BE COMMENCED MORE THAN TEN YEARS AFTER DATE OF THIS CERTIFICATE SHOWN HEREON. (13-80105 C.R.S.)

NOTES:

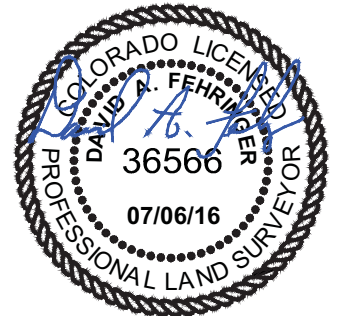
- ALL BEARINGS ARE GRID BASED UPON THE COLORADO STATE PLANE COORDINATE SYSTEM, NORTH ZONE, NAD83(2011) DERIVED FROM POST-PROCESSED STATIC GPS OBSERVATIONS.
- DISTANCES ARE ON GRID
- VERTICAL DATUM IS NAVD88 BASED UPON GPS OBSERVATIONS
- PDOP VALUE EQUALS 2.2.
- GPS OPERATOR: DAVE FEHRINGER.
- GROUND ELEVATION AT WELLHEAD = 4636'
- ALL SECTION LENGTHS ARE MEASURED DISTANCES UNLESS NOTED BY (R), RECORD BEARING AND DISTANCE.
- NEAREST CULTURAL DISTANCES
BUILDINGS: 5280' +/-
BUILDING UNIT: 5280' +/-
HIGH OCCUPANCY BUILDING UNIT: 5280'+
DESIGNATED OUTSIDE ACTIVITY AREA: 5280'+
PUBLIC ROAD: 5280'+
ABOVE GROUND UTILITY: 933'+/-
RAILROAD: 5280'+
PROPERTY LINE: 310'+

3	NAD 83		STATE PLANE COORDINATES	
T34-2-14XRLNB	LATITUDE	LONGITUDE	NORTHING	EASTING
SURFACE	40.4217539	-104.2834956	1398808.52	3338689.72
TARGET 1	40.4233949	-104.2865068	1399394.80	3337843.26
MID LATERAL	40.4077390	-104.2865190	1393691.87	3337917.90
BOTTOM HOLE	40.3942790	-104.2864289	1388789.23	3338010.08

PAD CORNERS	NAD 83	
SA 41-11 PAD	LATITUDE	LONGITUDE
NW	40.422281	-104.2841045
NE	40.4223435	-104.2824184
SE	40.4212468	-104.2823487
SW	40.4211843	-104.2840348

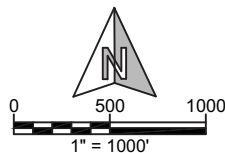
CERTIFICATE OF SURVEYOR:

I, DAVID A. FEHRINGER OF LANDER, WYOMING HEREBY CERTIFY THAT THIS WELL LOCATION CERTIFICATE WAS PREPARED FROM NOTES TAKEN DURING AN ACTUAL SURVEY ON JUNE 27, 2016; AND THAT IT CORRECTLY SHOWS THE DRILLING LOCATION OF BONANZA CREEK ENERGY, INC. STATE ANTELOPE T34-2-14XRLNB AS STAKED DURING SAID SURVEY. THIS MAP DOES NOT REPRESENT A BOUNDARY SURVEY OR AN IMPROVEMENT LOCATION PLAT AND SHOULD NOT BE USED FOR THE ESTABLISHMENT OF BOUNDARY LINES.



WILLIAM H. SMITH & ASSOCIATES, Inc.
155 N. 1st Street
Lander, WY 82520
Phone: 307-335-5646

Drawn By: MAM
Job No.: 15043
Checked By: DAF
Date: 06/22/16
Revision: RE-ORDERED/ADDED WELLS 12-05-17 MAM



IF BAR LENGTH DOES NOT EQUAL 1"(ONE INCH), THIS PAGE WAS NOT PLOTTED TO THE INTENDED SCALE.

LOCATION CERTIFICATE

**STATE ANTELOPE
T34-2-14XRLNB
LATERAL**
W½ E½, SECTION 11,
T.5N., R.62W., 6th PM
WELD COUNTY, COLORADO



410 17th Street
Denver, CO 80202
(720) 440-6100

SHEET
2
OF
3

3.5" AC PLS7242
LAT 40.4073005°N
LONG -104.299994°W

N86° 46' 57.48"E
5364.503'

MID LATERAL TARGET
0' FNL
1607' FEL

3.5" AC PLS 8018
LAT 40.4079264°N
LONG -104.2807478°W

NOTE: UNDER COLORADO LAW, YOU
MUST COMMENCE ANY LEGAL ACTION
BASED ON ANY DEFECT IN THIS
CERTIFICATE WITHIN THREE YEARS
AFTER DEFECT IS DISCOVERED. IN NO
EVENT MAY ANY ACTION BASED UPON
ANY DEFECT IN THIS SURVEY BE
COMMENCED MORE THAN TEN YEARS
AFTER DATE OF THIS CERTIFICATE
SHOWN HEREON. (13-80105 C.R.S.)

N1° 55' 13.66"W

5342.880'

3.5" AC PLS22098
LAT 40.3926372°N
LONG -104.2996106°W

5244.878'
S87° 13' 33.95"W

3" AC PLS17492
LAT 40.3931377°N
LONG -104.2807921°W

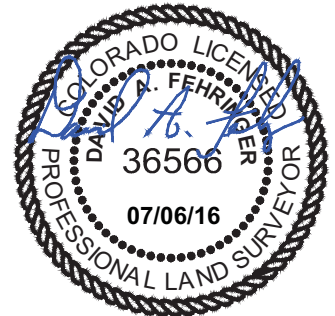
NOTES:

- ALL BEARINGS ARE GRID BASED UPON THE COLORADO STATE PLANE COORDINATE SYSTEM, NORTH ZONE, NAD83(2011) DERIVED FROM POST-PROCESSED STATIC GPS OBSERVATIONS.
- DISTANCES ARE ON GRID
- VERTICAL DATUM IS NAVD88 BASED UPON GPS OBSERVATIONS
- PDOP VALUE EQUALS 2.2.
- GPS OPERATOR: DAVE FEHRINGER.
- GROUND ELEVATION AT WELLHEAD = 4636'
- ALL SECTION LENGTHS ARE MEASURED DISTANCES UNLESS NOTED BY (R), RECORD BEARING AND DISTANCE.
- NEAREST CULTURAL DISTANCES
BUILDINGS: 5280' +/-
BUILDING UNIT: 5280' +/-
HIGH OCCUPANCY BUILDING UNIT: 5280'+
DESIGNATED OUTSIDE ACTIVITY AREA: 5280'+
PUBLIC ROAD: 5280'+
ABOVE GROUND UTILITY: 933'+/-
RAILROAD: 5280'+
PROPERTY LINE: 310'+

3	NAD 83		STATE PLANE COORDINATES	
T34-2-14XRLNB	LATITUDE	LONGITUDE	NORTHING	EASTING
SURFACE	40.4217539	-104.2834956	1398808.52	3338689.72
TARGET 1	40.4233949	-104.2865068	1399394.80	3337843.26
MID LATERAL	40.4077390	-104.2865190	1393691.87	3337917.90
BOTTOM HOLE	40.3942790	-104.2864289	1388789.23	3338010.08

CERTIFICATE OF SURVEYOR:

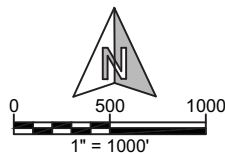
I, DAVID A. FEHRINGER OF LANDER, WYOMING HEREBY CERTIFY THAT THIS WELL LOCATION CERTIFICATE WAS PREPARED FROM NOTES TAKEN DURING AN ACTUAL SURVEY ON JUNE 27, 2016; AND THAT IT CORRECTLY SHOWS THE DRILLING LOCATION OF BONANZA CREEK ENERGY, INC. STATE ANTELOPE T34-2-14XRLNB AS STAKED DURING SAID SURVEY. THIS MAP DOES NOT REPRESENT A BOUNDARY SURVEY OR AN IMPROVEMENT LOCATION PLAT AND SHOULD NOT BE USED FOR THE ESTABLISHMENT OF BOUNDARY LINES.



PAD CORNERS	NAD 83	
SA 41-11 PAD	LATITUDE	LONGITUDE
NW	40.422281	-104.2841045
NE	40.4223435	-104.2824184
SE	40.4212468	-104.2823487
SW	40.4211843	-104.2840348



**WILLIAM H. SMITH &
ASSOCIATES, Inc.**
155 N. 1st Street
Lander, WY 82520
Phone: 307-335-5646



Drawn By: MAM
Job No.: 15043
Checked By: DAF
Date: 06/22/16
Revision: RE-ORDERED/ADDED WELLS 12-05-17 MAM

IF BAR LENGTH DOES NOT EQUAL
1"(ONE INCH), THIS PAGE WAS NOT
PLOTTED TO THE INTENDED SCALE.

LOCATION CERTIFICATE

STATE ANTELOPE
T34-2-14XRLNB
BOTTOM HOLE
SW $\frac{1}{4}$ SE $\frac{1}{4}$, SECTION 14,
T.5N., R.62W., 6th PM
WELD COUNTY, COLORADO



410 17th Street
Denver, CO 80202
(720) 440-6100

SHEET
3
OF
3