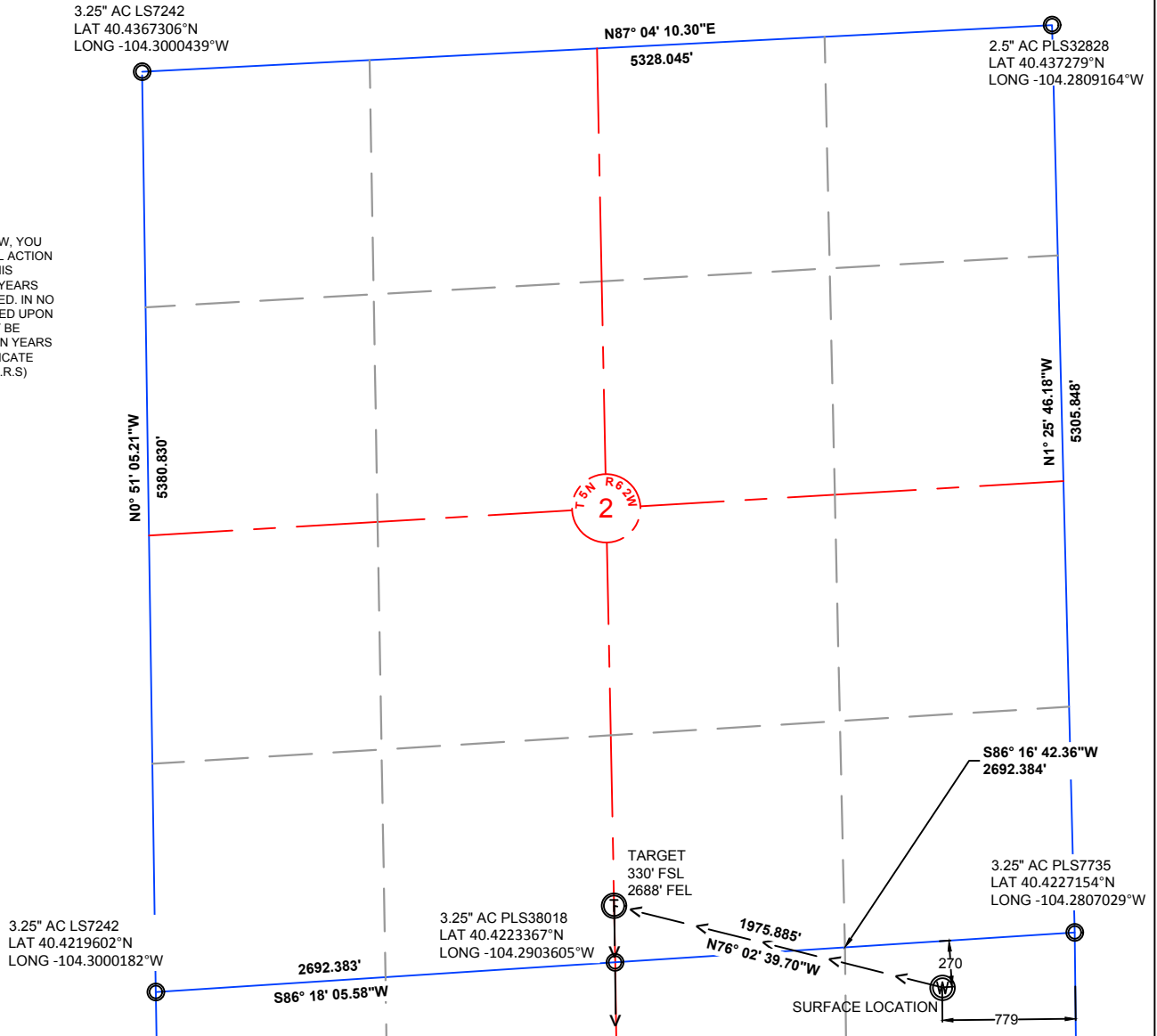


NOTE: UNDER COLORADO LAW, YOU MUST COMMENCE ANY LEGAL ACTION BASED ON ANY DEFECT IN THIS CERTIFICATE WITHIN THREE YEARS AFTER DEFECT IS DISCOVERED. IN NO EVENT MAY ANY ACTION BASED UPON ANY DEFECT IN THIS SURVEY BE COMMENCED MORE THAN TEN YEARS AFTER DATE OF THIS CERTIFICATE SHOWN HEREON. (13-80105 C.R.S)



NOTES:

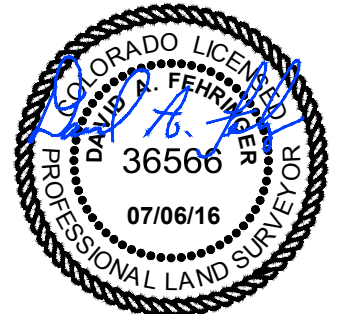
- ALL BEARINGS ARE GRID BASED UPON THE COLORADO STATE PLANE COORDINATE SYSTEM, NORTH ZONE, NAD83(2011) DERIVED FROM POST-PROCESSED STATIC GPS OBSERVATIONS.
- DISTANCES ARE ON GRID
- VERTICAL DATUM IS NAVD88 BASED UPON GPS OBSERVATIONS
- PDOP VALUE EQUALS 2.2.
- GPS OPERATOR: DAVE FEHRINGER.
- GROUND ELEVATION AT WELLHEAD = 4636'
- ALL SECTION LENGTHS ARE MEASURED DISTANCES UNLESS NOTED BY (R), RECORD BEARING AND DISTANCE.
- NEAREST CULTURAL DISTANCES
 - BUILDINGS: 5280' +/-
 - BUILDING UNIT: 5280' +/-
 - HIGH OCCUPANCY BUILDING UNIT: 5280'+
 - DESIGNATED OUTSIDE ACTIVITY AREA: 5280'+
 - PUBLIC ROAD: 5280'+
 - ABOVE GROUND UTILITY: 893'+/-
 - RAILROAD: 5280'+
 - PROPERTY LINE: 270'+

CERTIFICATE OF SURVEYOR:

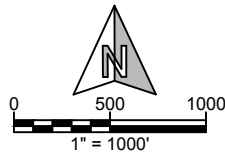
I, DAVID A. FEHRINGER OF LANDER, WYOMING HEREBY CERTIFY THAT THIS WELL LOCATION CERTIFICATE WAS PREPARED FROM NOTES TAKEN DURING AN ACTUAL SURVEY ON JUNE 27, 2016; AND THAT IT CORRECTLY SHOWS THE DRILLING LOCATION OF BONANZA CREEK ENERGY, INC. STATE ANTELOPE 0-2-14XRLNB AS STAKED DURING SAID SURVEY. THIS MAP DOES NOT REPRESENT A BOUNDARY SURVEY OR AN IMPROVEMENT LOCATION PLAT AND SHOULD NOT BE USED FOR THE ESTABLISHMENT OF BOUNDARY LINES.

1	NAD 83		STATE PLANE COORDINATES	
O-2-14XRLNB	LATITUDE	LONGITUDE	NORTHING	EASTING
SURFACE	40.4218636	-104.2835026	1398848.44	3338687.23
TARGET 1	40.4232435	-104.2903659	1399324.97	3336769.67
MID LATERAL	40.4076140	-104.2903653	1393631.70	3336847.52
BOTTOM HOLE	40.3941791	-104.2901882	1388738.53	3336963.60

PAD CORNERS	NAD 83	
SA 41-11 PAD	LATITUDE	LONGITUDE
NW	40.422281	-104.2841045
NE	40.4223435	-104.2824184
SE	40.4212468	-104.2823487
SW	40.4211843	-104.2840348



WILLIAM H. SMITH & ASSOCIATES, Inc.
 155 N. 1st Street
 Lander, WY 82520
 Phone: 307-335-5646



Drawn By: MAM
 Job No.: 15043
 Checked By: DAF
 Date: 06/22/16
 Revision: RE-ORDERED/ADDED WELLS 12-05-17 MAM

IF BAR LENGTH DOES NOT EQUAL 1"(ONE INCH), THIS PAGE WAS NOT PLOTTED TO THE INTENDED SCALE.

LOCATION CERTIFICATE
 STATE ANTELOPE
O-2-14XRLNB
SURFACE
 NE¼ NE¼, SECTION 11,
 T.5N., R.62W., 6th PM
 WELD COUNTY, COLORADO

BONANZA CREEK
 410 17th Street
 Denver, CO 80202
 (720) 440-6100

SHEET
 1
 OF
 3

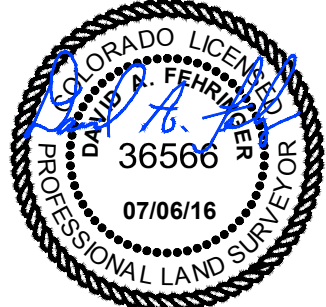
NOTE: UNDER COLORADO LAW, YOU MUST COMMENCE ANY LEGAL ACTION BASED ON ANY DEFECT IN THIS CERTIFICATE WITHIN THREE YEARS AFTER DEFECT IS DISCOVERED. IN NO EVENT MAY ANY ACTION BASED UPON ANY DEFECT IN THIS SURVEY BE COMMENCED MORE THAN TEN YEARS AFTER DATE OF THIS CERTIFICATE SHOWN HEREON. (13-80105 C.R.S)

NOTES:

- ALL BEARINGS ARE GRID BASED UPON THE COLORADO STATE PLANE COORDINATE SYSTEM, NORTH ZONE, NAD83(2011) DERIVED FROM POST-PROCESSED STATIC GPS OBSERVATIONS.
- DISTANCES ARE ON GRID
- VERTICAL DATUM IS NAVD88 BASED UPON GPS OBSERVATIONS
- PDOP VALUE EQUALS 2.2.
- GPS OPERATOR: DAVE FEHRINGER.
- GROUND ELEVATION AT WELLHEAD = 4636'
- ALL SECTION LENGTHS ARE MEASURED DISTANCES UNLESS NOTED BY (R), RECORD BEARING AND DISTANCE.
- NEAREST CULTURAL DISTANCES
 BUILDINGS: 5280' +/-
 BUILDING UNIT: 5280' +/-
 HIGH OCCUPANCY BUILDING UNIT: 5280'+
 DESIGNATED OUTSIDE ACTIVITY AREA: 5280'+
 PUBLIC ROAD: 5280'+
 ABOVE GROUND UTILITY: 893'+/-
 RAILROAD: 5280'+
 PROPERTY LINE: 270'+

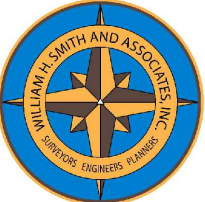
CERTIFICATE OF SURVEYOR:

I, DAVID A. FEHRINGER OF LANDER, WYOMING HEREBY CERTIFY THAT THIS WELL LOCATION CERTIFICATE WAS PREPARED FROM NOTES TAKEN DURING AN ACTUAL SURVEY ON JUNE 27, 2016; AND THAT IT CORRECTLY SHOWS THE DRILLING LOCATION OF BONANZA CREEK ENERGY, INC. STATE ANTELOPE O-2-14XRLNB AS STAKED DURING SAID SURVEY. THIS MAP DOES NOT REPRESENT A BOUNDARY SURVEY OR AN IMPROVEMENT LOCATION PLAT AND SHOULD NOT BE USED FOR THE ESTABLISHMENT OF BOUNDARY LINES.



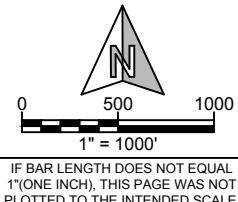
1	NAD 83		STATE PLANE COORDINATES	
	LATITUDE	LONGITUDE	NORTHING	EASTING
O-2-14XRLNB	40.4218636	-104.2835026	1398848.44	3338687.23
SURFACE	40.4232435	-104.2903659	1399324.97	3336769.67
TARGET 1	40.4076140	-104.2903653	1393631.70	3336847.52
MID LATERAL	40.3941791	-104.2901882	1388738.53	3336963.60
BOTTOM HOLE				

PAD CORNERS	NAD 83	
	LATITUDE	LONGITUDE
SA 41-11 PAD	40.422281	-104.2841045
NW	40.4223435	-104.2824184
NE	40.4212468	-104.2823487
SE	40.4211843	-104.2840348
SW		



WILLIAM H. SMITH & ASSOCIATES, Inc.
 155 N. 1st Street
 Lander, WY 82520
 Phone: 307-335-5646

Drawn By: MAM Checked By: DAF
 Job No.: 15043 Date: 06/22/16
 Revision: RE-ORDERED/ADDED WELLS 12-05-17 MAM



LOCATION CERTIFICATE
 STATE ANTELOPE
O-2-14XRLNB
LATERAL
 W $\frac{1}{2}$ E $\frac{2}{2}$, SECTION 11,
 T.5N., R.62W., 6th PM
WELD COUNTY, COLORADO

BONANZA CREEK
 410 17th Street
 Denver, CO 80202
 (720) 440-6100

SHEET
 2
 OF
 3

3.5" AC PLS7242
LAT 40.4073005°N
LONG -104.299994°W

N86° 46' 57.48"E
5364.503'

3.5" AC PLS38018
LAT 40.4079264°N
LONG -104.2807478°W

NOTE: UNDER COLORADO LAW, YOU MUST COMMENCE ANY LEGAL ACTION BASED ON ANY DEFECT IN THIS CERTIFICATE WITHIN THREE YEARS AFTER DEFECT IS DISCOVERED. IN NO EVENT MAY ANY ACTION BASED UPON ANY DEFECT IN THIS SURVEY BE COMMENCED MORE THAN TEN YEARS AFTER DATE OF THIS CERTIFICATE SHOWN HEREON. (13-80105 C.R.S)

N1° 55' 13.66"W
5342.880'

MID LATERAL TARGET
0' FNL
2678' FEL

5387.486'
S0° 39' 23.67"E

4894.552'
S1° 21' 32.24"E

BOTTOM HOLE LOCATION

3.5" AC PLS22098
LAT 40.3926372°N
LONG -104.2996106°W

5244.878'
S87° 13' 33.95"W

3" AC PLS17492
LAT 40.3931377°N
LONG -104.2807921°W

NOTES:

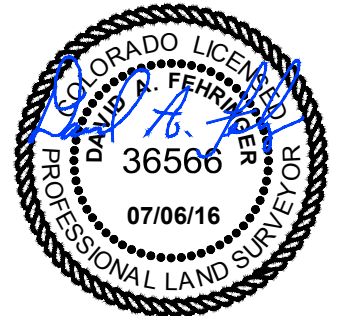
- ALL BEARINGS ARE GRID BASED UPON THE COLORADO STATE PLANE COORDINATE SYSTEM, NORTH ZONE, NAD83(2011) DERIVED FROM POST-PROCESSED STATIC GPS OBSERVATIONS.
- DISTANCES ARE ON GRID
- VERTICAL DATUM IS NAVD88 BASED UPON GPS OBSERVATIONS
- PDOP VALUE EQUALS 2.2.
- GPS OPERATOR: DAVE FEHRINGER.
- GROUND ELEVATION AT WELLHEAD = 4636'
- ALL SECTION LENGTHS ARE MEASURED DISTANCES UNLESS NOTED BY (R), RECORD BEARING AND DISTANCE.
- NEAREST CULTURAL DISTANCES
BUILDINGS: 5280' +/-
BUILDING UNIT: 5280' +/-
HIGH OCCUPANCY BUILDING UNIT: 5280'+
DESIGNATED OUTSIDE ACTIVITY AREA: 5280'+
PUBLIC ROAD: 5280'+
ABOVE GROUND UTILITY: 893'+/-
RAILROAD: 5280'+
PROPERTY LINE: 270'+

CERTIFICATE OF SURVEYOR:

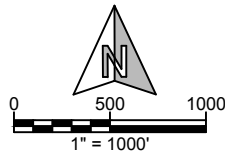
I, DAVID A. FEHRINGER OF LANDER, WYOMING HEREBY CERTIFY THAT THIS WELL LOCATION CERTIFICATE WAS PREPARED FROM NOTES TAKEN DURING AN ACTUAL SURVEY ON JUNE 27, 2016; AND THAT IT CORRECTLY SHOWS THE DRILLING LOCATION OF BONANZA CREEK ENERGY, INC. STATE ANTELOPE O-2-14XRLNB AS STAKED DURING SAID SURVEY. THIS MAP DOES NOT REPRESENT A BOUNDARY SURVEY OR AN IMPROVEMENT LOCATION PLAT AND SHOULD NOT BE USED FOR THE ESTABLISHMENT OF BOUNDARY LINES.

1	NAD 83		STATE PLANE COORDINATES	
O-2-14XRLNB	LATITUDE	LONGITUDE	NORTHING	EASTING
SURFACE	40.4218636	-104.2835026	1398848.44	3338687.23
TARGET 1	40.4232435	-104.2903659	1399324.97	3336769.67
MID LATERAL	40.4076140	-104.2903653	1393631.70	3336847.52
BOTTOM HOLE	40.3941791	-104.2901882	1388738.53	3336963.60

PAD CORNERS	NAD 83	
SA 41-11 PAD	LATITUDE	LONGITUDE
NW	40.422281	-104.2841045
NE	40.4223435	-104.2824184
SE	40.4212468	-104.2823487
SW	40.4211843	-104.2840348



WILLIAM H. SMITH & ASSOCIATES, Inc.
155 N. 1st Street
Lander, WY 82520
Phone: 307-335-5646



Drawn By: MAM
Job No.: 15043
Checked By: DAF
Date: 06/22/16
Revision: RE-ORDERED/ADDED WELLS 12-05-17 MAM

IF BAR LENGTH DOES NOT EQUAL 1"(ONE INCH), THIS PAGE WAS NOT PLOTTED TO THE INTENDED SCALE.

LOCATION CERTIFICATE
STATE ANTELOPE
O-2-14XRLNB
BOTTOM HOLE
SW $\frac{1}{4}$ SE $\frac{1}{4}$, SECTION 14,
T.5N., R.62W., 6th PM
WELD COUNTY, COLORADO

BONANZA CREEK
410 17th Street
Denver, CO 80202
(720) 440-6100

SHEET
3
OF
3