



410 17th Street, Suite 1400  
Denver, CO 80202  
(720) 440-6100 phone  
(720) 305-0804 fax

[Bonanzaacrk.com](http://Bonanzaacrk.com)

January 11, 2018

State of Colorado  
Oil and Gas Conservation Commission  
1120 Lincoln Street, Suite 801  
Denver, CO 80203

**RE: Proposed Wellbore Spacing Unit**  
State Antelope O-2-14XRLNB  
Niobrara New Drill  
NENE Section 11, Township 5N, Range 62W, 6<sup>th</sup> PM  
Weld County, Colorado

Dear Director Lepore,

Bonanza Creek Energy Operating Company, LLC. ("Bonanza Creek") is planning to drill the above captioned well in accordance with the provisions of Colorado Oil and Gas Conservation Commission (COGCC) Rule 318A.e.

Bonanza Creek's proposed wellbore spacing unit consists of:

Township 5N, Range 62W (Weld County):  
Section 2: SWSE, SESW  
Section 11: W2E2, E2W2  
Section 14: W2E2, E2W2

Total acres: 720ac

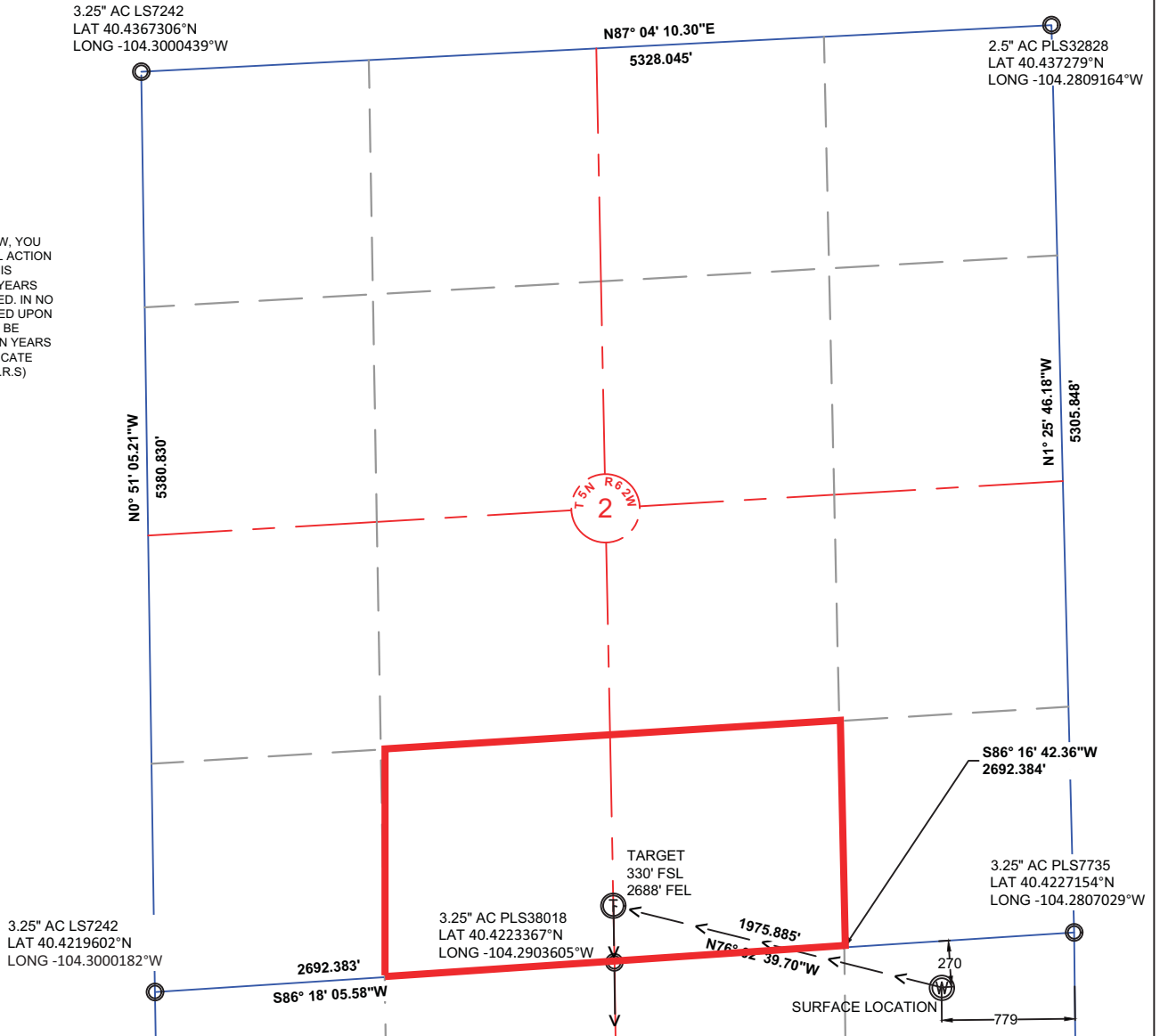
The 30 day notification time period has passed and we have not yet received any objections to such well locations or proposed spacing unit, therefore Bonanza Creek hereby requests the Director to approve the above mentioned well. Bonanza Creek respectfully requests the COGCC review the enclosed map illustrating the proposed wellbore spacing unit.

Regards,  
Bonanza Creek Energy Operating Company, LLC.

A handwritten signature in black ink that reads "Brian Dodek".

Brian Dodek, P.G.  
Manager – Environmental & Regulatory Compliance

NOTE: UNDER COLORADO LAW, YOU MUST COMMENCE ANY LEGAL ACTION BASED ON ANY DEFECT IN THIS CERTIFICATE WITHIN THREE YEARS AFTER DEFECT IS DISCOVERED. IN NO EVENT MAY ANY ACTION BASED UPON ANY DEFECT IN THIS SURVEY BE COMMENCED MORE THAN TEN YEARS AFTER DATE OF THIS CERTIFICATE SHOWN HEREON. (13-80105 C.R.S)



NOTES:

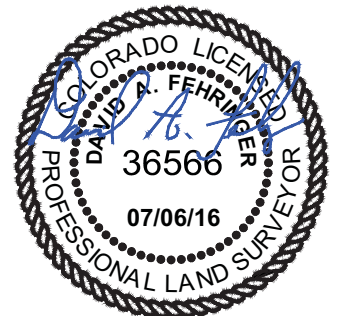
- ALL BEARINGS ARE GRID BASED UPON THE COLORADO STATE PLANE COORDINATE SYSTEM, NORTH ZONE, NAD83(2011) DERIVED FROM POST-PROCESSED STATIC GPS OBSERVATIONS.
- DISTANCES ARE ON GRID
- VERTICAL DATUM IS NAVD88 BASED UPON GPS OBSERVATIONS
- PDOP VALUE EQUALS 2.2.
- GPS OPERATOR: DAVE FEHRINGER.
- GROUND ELEVATION AT WELLHEAD = 4636'
- ALL SECTION LENGTHS ARE MEASURED DISTANCES UNLESS NOTED BY (R), RECORD BEARING AND DISTANCE.
- NEAREST CULTURAL DISTANCES  
 BUILDINGS: 5280' +/-  
 BUILDING UNIT: 5280' +/-  
 HIGH OCCUPANCY BUILDING UNIT: 5280'+  
 DESIGNATED OUTSIDE ACTIVITY AREA: 5280'+  
 PUBLIC ROAD: 5280'+  
 ABOVE GROUND UTILITY: 893'+/-  
 RAILROAD: 5280'+  
 PROPERTY LINE: 270'+

CERTIFICATE OF SURVEYOR:

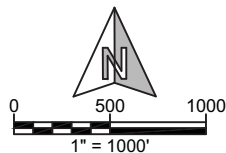
I, DAVID A. FEHRINGER OF LANDER, WYOMING HEREBY CERTIFY THAT THIS WELL LOCATION CERTIFICATE WAS PREPARED FROM NOTES TAKEN DURING AN ACTUAL SURVEY ON JUNE 27, 2016; AND THAT IT CORRECTLY SHOWS THE DRILLING LOCATION OF BONANZA CREEK ENERGY, INC. STATE ANTELOPE O-2-14XRLNB AS STAKED DURING SAID SURVEY. THIS MAP DOES NOT REPRESENT A BOUNDARY SURVEY OR AN IMPROVEMENT LOCATION PLAT AND SHOULD NOT BE USED FOR THE ESTABLISHMENT OF BOUNDARY LINES.

1	NAD 83		STATE PLANE COORDINATES	
O-2-14XRLNB	LATITUDE	LONGITUDE	NORTHING	EASTING
SURFACE	40.4218636	-104.2835026	1398848.44	3338687.23
TARGET 1	40.4232435	-104.2903659	1399324.97	3336769.67
MID LATERAL	40.4076140	-104.2903653	1393631.70	3336847.52
BOTTOM HOLE	40.3941791	-104.2901882	1388738.53	3336963.60

PAD CORNERS	NAD 83	
SA 41-11 PAD	LATITUDE	LONGITUDE
NW	40.422281	-104.2841045
NE	40.4223435	-104.2824184
SE	40.4212468	-104.2823487
SW	40.4211843	-104.2840348



**WILLIAM H. SMITH & ASSOCIATES, Inc.**  
 155 N. 1st Street  
 Lander, WY 82520  
 Phone: 307-335-5646



Drawn By: MAM  
 Job No.: 15043  
 Checked By: DAF  
 Date: 06/22/16  
 Revision: RE-ORDERED/ADDED WELLS 12-05-17 MAM

IF BAR LENGTH DOES NOT EQUAL 1"(ONE INCH), THIS PAGE WAS NOT PLOTTED TO THE INTENDED SCALE.

LOCATION CERTIFICATE  
 STATE ANTELOPE  
**O-2-14XRLNB**  
 SURFACE  
 NE¼ NE¼, SECTION 11,  
 T.5N., R.62W., 6th PM  
 WELD COUNTY, COLORADO

**BONANZA CREEK**  
 410 17th Street  
 Denver, CO 80202  
 (720) 440-6100

SHEET  
 1  
 OF  
 3

3.25" AC LS7242  
LAT 40.4219602°N  
LONG -104.3000182°W

2692.383'  
S86° 18' 05.58"W

3.25" AC PLS38018  
LAT 40.4223367°N  
LONG -104.2903605°W

TARGET  
330' FSL  
2688' FEL

1975.885'  
N76° 0' 39.70"W

3.25" AC PLS7735  
LAT 40.4227154°N  
LONG -104.2807029°W

SURFACE LOCATION

270  
779

NOTE: UNDER COLORADO LAW, YOU MUST COMMENCE ANY LEGAL ACTION BASED ON ANY DEFECT IN THIS CERTIFICATE WITHIN THREE YEARS AFTER DEFECT IS DISCOVERED. IN NO EVENT MAY ANY ACTION BASED UPON ANY DEFECT IN THIS SURVEY BE COMMENCED MORE THAN TEN YEARS AFTER DATE OF THIS CERTIFICATE SHOWN HEREON. (13-80105 C.R.S.)

5693.799'  
S0° 47' 00.26"E

5340.500'  
S0° 50' 51.97"E

5387.619'  
N0° 39' 17.72"W

N86° 46' 57.48"E  
5364.503'

MID LATERAL TARGET  
0' FNL  
2678' FEL

3.5" AC PLS38018  
LAT 40.4079264°N  
LONG -104.2807478°W

NOTES:

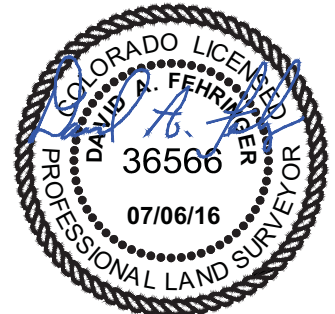
- ALL BEARINGS ARE GRID BASED UPON THE COLORADO STATE PLANE COORDINATE SYSTEM, NORTH ZONE, NAD83(2011) DERIVED FROM POST-PROCESSED STATIC GPS OBSERVATIONS.
- DISTANCES ARE ON GRID
- VERTICAL DATUM IS NAVD88 BASED UPON GPS OBSERVATIONS
- PDOP VALUE EQUALS 2.2.
- GPS OPERATOR: DAVE FEHRINGER.
- GROUND ELEVATION AT WELLHEAD = 4636'
- ALL SECTION LENGTHS ARE MEASURED DISTANCES UNLESS NOTED BY (R), RECORD BEARING AND DISTANCE.
- NEAREST CULTURAL DISTANCES  
BUILDINGS: 5280' +/-  
BUILDING UNIT: 5280' +/-  
HIGH OCCUPANCY BUILDING UNIT: 5280'+  
DESIGNATED OUTSIDE ACTIVITY AREA: 5280'+  
PUBLIC ROAD: 5280'+  
ABOVE GROUND UTILITY: 893'+/-  
RAILROAD: 5280'+  
PROPERTY LINE: 270'+

CERTIFICATE OF SURVEYOR:

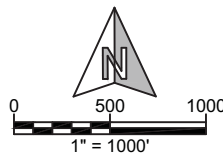
I, DAVID A. FEHRINGER OF LANDER, WYOMING HEREBY CERTIFY THAT THIS WELL LOCATION CERTIFICATE WAS PREPARED FROM NOTES TAKEN DURING AN ACTUAL SURVEY ON JUNE 27, 2016; AND THAT IT CORRECTLY SHOWS THE DRILLING LOCATION OF BONANZA CREEK ENERGY, INC. STATE ANTELOPE O-2-14XRLNB AS STAKED DURING SAID SURVEY. THIS MAP DOES NOT REPRESENT A BOUNDARY SURVEY OR AN IMPROVEMENT LOCATION PLAT AND SHOULD NOT BE USED FOR THE ESTABLISHMENT OF BOUNDARY LINES.

1	NAD 83		STATE PLANE COORDINATES	
	LATITUDE	LONGITUDE	NORTHING	EASTING
O-2-14XRLNB	40.4218636	-104.2835026	1398848.44	3338687.23
SURFACE	40.4232435	-104.2903659	1399324.97	3336769.67
TARGET 1	40.4232435	-104.2903659	1399324.97	3336769.67
MID LATERAL	40.4076140	-104.2903653	1393631.70	3336847.52
BOTTOM HOLE	40.3941791	-104.2901882	1388738.53	3336963.60

PAD CORNERS	NAD 83	
	LATITUDE	LONGITUDE
SA 41-11 PAD	40.422281	-104.2841045
NW	40.4223435	-104.2824184
NE	40.4212468	-104.2823487
SE	40.4211843	-104.2840348
SW		



**WILLIAM H. SMITH & ASSOCIATES, Inc.**  
155 N. 1st Street  
Lander, WY 82520  
Phone: 307-335-5646



Drawn By: MAM  
Job No.: 15043  
Checked By: DAF  
Date: 06/22/16  
Revision: RE-ORDERED/ADDED WELLS 12-05-17 MAM

IF BAR LENGTH DOES NOT EQUAL 1"(ONE INCH), THIS PAGE WAS NOT PLOTTED TO THE INTENDED SCALE.

LOCATION CERTIFICATE

STATE ANTELOPE  
O-2-14XRLNB  
LATERAL

W<sub>1</sub> E<sub>2</sub>, SECTION 11,  
T.5N., R.62W., 6th PM

WELD COUNTY, COLORADO



410 17th Street  
Denver, CO 80202  
(720) 440-6100

SHEET  
2  
OF  
3

Z:\PROJECTS\1319-01\_BONANZA\SN-62W.DWG STATE ANTELOPE 41-11\41-11 CERT 12-05-17 FROM 14-2.dwg SAVED DATE 2017-12-05 14:23

3.5" AC PLS7242  
LAT 40.4073005°N  
LONG -104.299994°W

N86° 46' 57.48"E  
5364.503'

MID LATERAL TARGET  
0' FNL  
2678' FEL

3.5" AC PLS38018  
LAT 40.4079264°N  
LONG -104.2807478°W

NOTE: UNDER COLORADO LAW, YOU MUST COMMENCE ANY LEGAL ACTION BASED ON ANY DEFECT IN THIS CERTIFICATE WITHIN THREE YEARS AFTER DEFECT IS DISCOVERED. IN NO EVENT MAY ANY ACTION BASED UPON ANY DEFECT IN THIS SURVEY BE COMMENCED MORE THAN TEN YEARS AFTER DATE OF THIS CERTIFICATE SHOWN HEREON. (13-80105 C.R.S)

N1° 55' 13.66"W  
5342.880'

14

5387.486'  
S0° 39' 23.67"E

4894.552'  
S1° 21' 32.24"E

BOTTOM HOLE LOCATION

5244.878'  
S87° 13' 33.95"W

3.5" AC PLS22098  
LAT 40.3926372°N  
LONG -104.2996106°W

3" AC PLS17492  
LAT 40.3931377°N  
LONG -104.2807921°W

NOTES:

- ALL BEARINGS ARE GRID BASED UPON THE COLORADO STATE PLANE COORDINATE SYSTEM, NORTH ZONE, NAD83(2011) DERIVED FROM POST-PROCESSED STATIC GPS OBSERVATIONS.
- DISTANCES ARE ON GRID
- VERTICAL DATUM IS NAVD88 BASED UPON GPS OBSERVATIONS
- PDOP VALUE EQUALS 2.2.
- GPS OPERATOR: DAVE FEHRINGER.
- GROUND ELEVATION AT WELLHEAD = 4636'
- ALL SECTION LENGTHS ARE MEASURED DISTANCES UNLESS NOTED BY (R), RECORD BEARING AND DISTANCE.
- NEAREST CULTURAL DISTANCES  
BUILDINGS: 5280' +/-  
BUILDING UNIT: 5280' +/-  
HIGH OCCUPANCY BUILDING UNIT: 5280'+  
DESIGNATED OUTSIDE ACTIVITY AREA: 5280'+  
PUBLIC ROAD: 5280'+  
ABOVE GROUND UTILITY: 893'+/-  
RAILROAD: 5280'+  
PROPERTY LINE: 270'+

CERTIFICATE OF SURVEYOR:

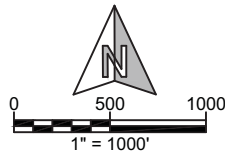
I, DAVID A. FEHRINGER OF LANDER, WYOMING HEREBY CERTIFY THAT THIS WELL LOCATION CERTIFICATE WAS PREPARED FROM NOTES TAKEN DURING AN ACTUAL SURVEY ON JUNE 27, 2016; AND THAT IT CORRECTLY SHOWS THE DRILLING LOCATION OF BONANZA CREEK ENERGY, INC. STATE ANTELOPE O-2-14XRLNB AS STAKED DURING SAID SURVEY. THIS MAP DOES NOT REPRESENT A BOUNDARY SURVEY OR AN IMPROVEMENT LOCATION PLAT AND SHOULD NOT BE USED FOR THE ESTABLISHMENT OF BOUNDARY LINES.

1	NAD 83		STATE PLANE COORDINATES	
O-2-14XRLNB	LATITUDE	LONGITUDE	NORTHING	EASTING
SURFACE	40.4218636	-104.2835026	1398848.44	3338687.23
TARGET 1	40.4232435	-104.2903659	1399324.97	3336769.67
MID LATERAL	40.4076140	-104.2903653	1393631.70	3336847.52
BOTTOM HOLE	40.3941791	-104.2901882	1388738.53	3336963.60

PAD CORNERS	NAD 83	
SA 41-11 PAD	LATITUDE	LONGITUDE
NW	40.422281	-104.2841045
NE	40.4223435	-104.2824184
SE	40.4212468	-104.2823487
SW	40.4211843	-104.2840348



**WILLIAM H. SMITH & ASSOCIATES, Inc.**  
155 N. 1st Street  
Lander, WY 82520  
Phone: 307-335-5646



Drawn By: MAM  
Job No.: 15043  
Checked By: DAF  
Date: 06/22/16  
Revision: RE-ORDERED/ADDED WELLS 12-05-17 MAM

IF BAR LENGTH DOES NOT EQUAL 1"(ONE INCH), THIS PAGE WAS NOT PLOTTED TO THE INTENDED SCALE.

LOCATION CERTIFICATE  
STATE ANTELOPE  
O-2-14XRLNB  
BOTTOM HOLE  
SW $\frac{1}{4}$  SE $\frac{1}{4}$ , SECTION 14,  
T.5N., R.62W., 6th PM  
WELD COUNTY, COLORADO

**BONANZA CREEK**  
410 17th Street  
Denver, CO 80202  
(720) 440-6100

SHEET  
3  
OF  
3