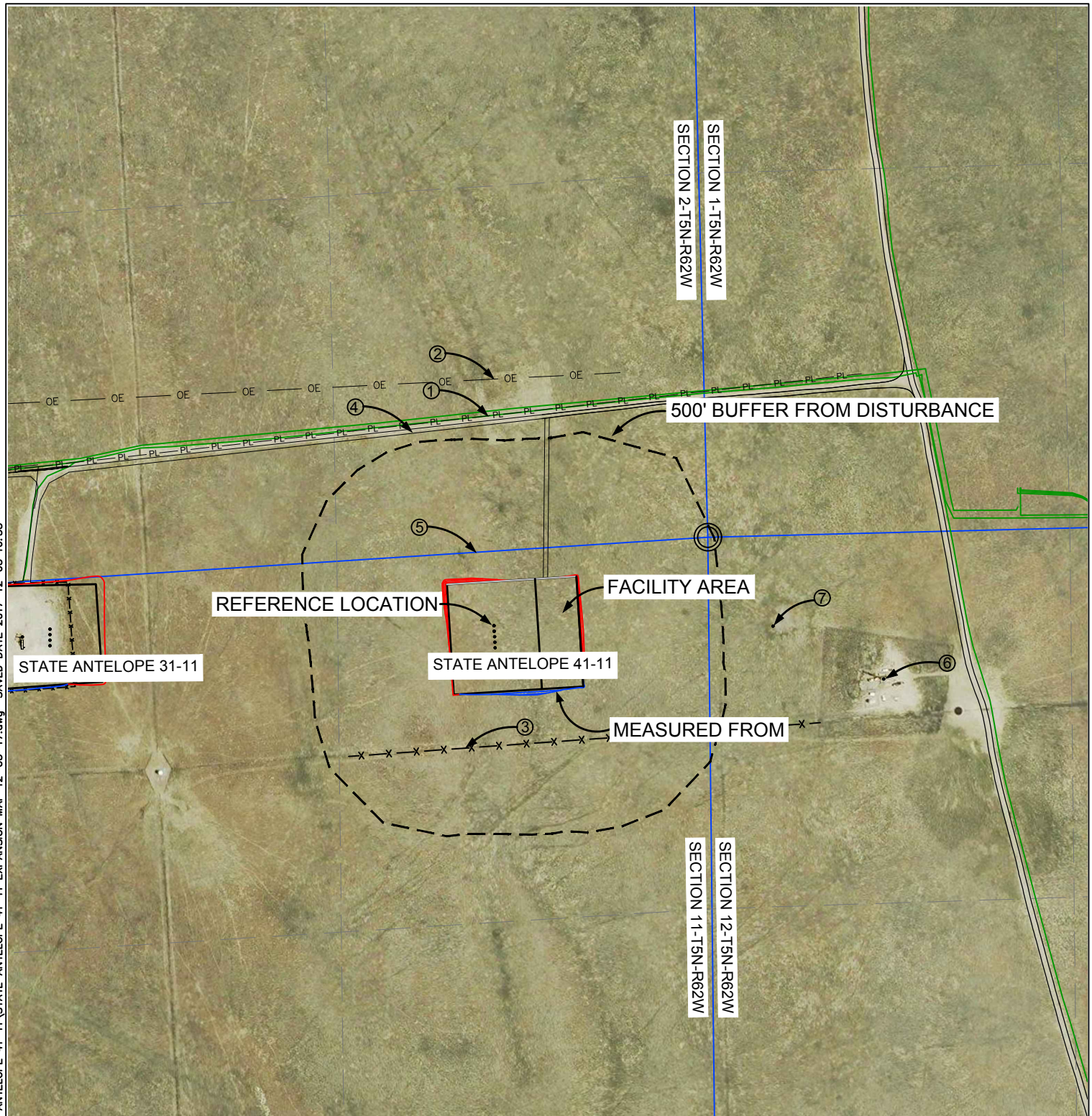


Z:\PROJECTS\1319-01_BONANZA\5N-62W\DWG\STATE ANTELOPE 41-11 EXPANSION MAP 12-05-17.dwg SAVED DATE 2017-12-05 10:33



MEASURED FROM REFERENCE LOCATION

- (#1) PIPELINE: ± 758' N06°26'W
- (#2) ABOVE GROUND UTILITY: ± 892' N02°53'W
- (#3) FENCE: ± 435' S04°05'E
- (#4) EXISTING OILFIELD ROAD: ± 726' N06°27'E
- (#5) PROPERTY LINE: ± 270' N03°43'W
- (#6) BONANZA STATE ANTELOPE 11-12 WELL SPUD 2006: ± 1425' S82°12'E
- (#7) PURE OIL CO COLORADO STATE #1 SPUD 1952: ± 1011' S89°53'E

MEASURED FROM CLOSEST EDGE OF LOCATION

- (#1) PIPELINE: ± 573' N07°05'W
- (#2) ABOVE GROUND UTILITY: ± 716' N02°53'W
- (#3) FENCE: ± 174' S02°53'E
- (#4) EXISTING OILFIELD ROAD: ± 541' N06°27'E
- (#5) PROPERTY LINE: ± 87' N03°43'W
- (#6) BONANZA STATE ANTELOPE 11-12 WELL SPUD 2006: ± 1084' S88°39'E
- (#7) PURE OIL CO COLORADO STATE #1 SPUD 1952: ± 687' S87°59'E

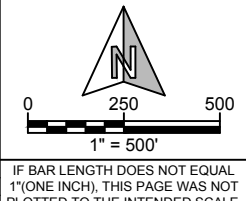
- REFERENCE LOCATION -

MEASUREMENTS MADE FROM REFERENCE WELL:
 STATE ANTELOPE O-2-14XRLNB
 LAT:40.4218636 LONG:104.2835026
 (NAD83)
 EXISTING GROUND ELEVATION 4636.2'
 WELL FOOTAGES: 270' FNL & 779' FEL



WILLIAM H. SMITH & ASSOCIATES, Inc.
 155 N. 1st Street
 Lander, WY 82520
 Phone: 307-335-5646

Drawn By: MAM	Checked By: DAF
Job No.: 15043	Date: 07/06/16
Revision: RE-ORDERED WELLS 12-05-17 MAM	



LOCATION DRAWING

STATE ANTELOPE
 41-11 PAD
 NE¼ NE¼, SECTION 11,
 T.5N., R.62W., 6th PM
 WELD COUNTY, COLORADO

BONANZA CREEK

410 17th Street
 Denver, CO 80202
 (720) 440-6100

SHEET
 1
 OF
 1