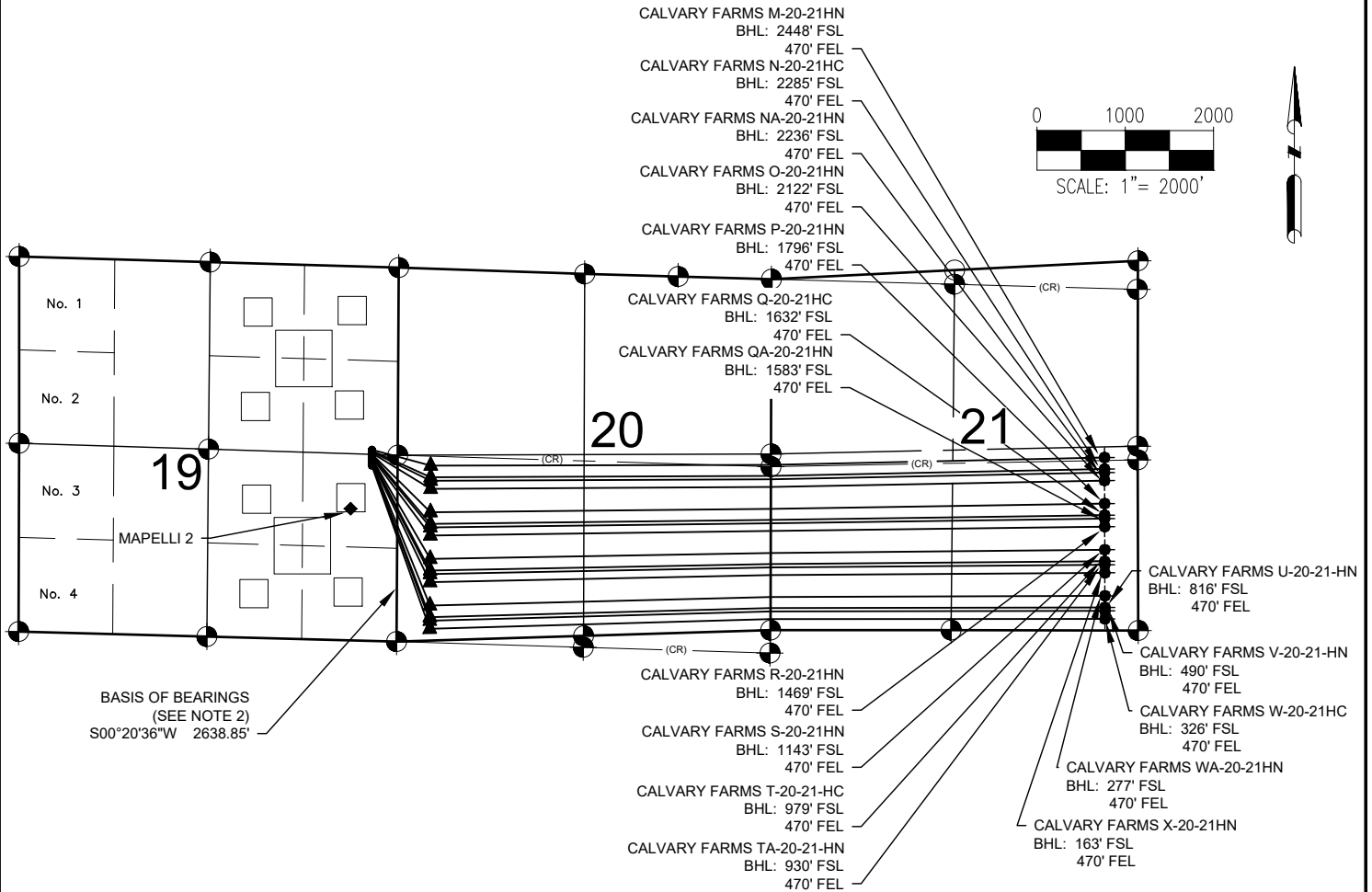


CALVARY FARMS 19-L PAD MULTI-WELL PLAN



NOTES:

- CALVARY FARMS M-20-21HN TO BE AT 2588' FNL & 365' FEL.
BOTTOM HOLE AT 2448' FSL & 470' FEL, SEC. 21.
- CALVARY FARMS N-20-21HC TO BE AT 2603' FNL & 365' FEL.
BOTTOM HOLE AT 2285' FSL & 470' FEL, SEC. 21.
- CALVARY FARMS NA-20-21HN TO BE AT 2618' FNL & 365' FEL.
BOTTOM HOLE AT 2236' FSL & 470' FEL, SEC. 21.
- CALVARY FARMS O-20-21HN TO BE AT 2633' FNL & 365' FEL.
BOTTOM HOLE AT 2122' FSL & 470' FEL, SEC. 21.

NOTES:

- CALVARY FARMS P-20-21HN TO BE AT 2648' FNL & 365' FEL.
BOTTOM HOLE AT 1796' FSL & 470' FEL, SEC. 21.
- CALVARY FARMS Q-20-21HC TO BE AT 2630' FNL & 365' FEL.
BOTTOM HOLE AT 1632' FSL & 470' FEL, SEC. 21.
- CALVARY FARMS QA-20-21HN TO BE AT 2615' FNL & 365' FEL.
BOTTOM HOLE AT 1583' FSL & 470' FEL, SEC. 21.
- CALVARY FARMS R-20-21HN TO BE AT 2600' FNL & 365' FEL.
BOTTOM HOLE AT 1469' FSL & 470' FEL, SEC. 21.
- CALVARY FARMS S-20-21HN TO BE AT 2585' FNL & 365' FEL.
BOTTOM HOLE AT 1143' FSL & 470' FEL, SEC. 21.
- CALVARY FARMS T-20-21HC TO BE AT 2570' FNL & 365' FEL.
BOTTOM HOLE AT 979' FSL & 470' FEL, SEC. 21.
- CALVARY FARMS TA-20-21HN TO BE AT 2555' FNL & 365' FEL.
BOTTOM HOLE AT 930' FSL & 470' FEL, SEC. 21.
- CALVARY FARMS U-20-21HN TO BE AT 2540' FNL & 365' FEL.
BOTTOM HOLE AT 816' FSL & 470' FEL, SEC. 21.
- CALVARY FARMS V-20-21HN TO BE AT 2525' FNL & 365' FEL.
BOTTOM HOLE AT 490' FSL & 470' FEL, SEC. 21.
- CALVARY FARMS W-20-21HC TO BE AT 2510' FNL & 365' FEL.
BOTTOM HOLE AT 326' FSL & 470' FEL, SEC. 21.
- CALVARY FARMS WA-20-21HN TO BE AT 2495' FNL & 365' FEL.
BOTTOM HOLE AT 277' FSL & 470' FEL, SEC. 21.
- CALVARY FARMS X-20-21HN TO BE AT 2480' FNL & 365' FEL.
BOTTOM HOLE AT 163' FSL & 470' FEL, SEC. 21.

LEGEND

- = EXISTING MONUMENT
- = CALCULATED POSITION
- = PROPOSED WELL
- ◆ = EXISTING WELL
- ▲ = BOTTOM HOLE
- ▲ = LANDING POINT
- BHL = BOTTOM HOLE LOCATION
- CR = COMMON REPORT

NOTES:

- THIS FIELD SURVEY CONFORMS TO THE MINIMUM STANDARDS SET BY THE C.O.G.C.C., RULE NO. 215
- BEARINGS ARE BASED ON THE ASSUMPTION THAT THE EAST LINE OF THE SOUTHEAST QUARTER OF SECTION 19, BEARS S00°20'36"W BETWEEN THE MONUMENTS SHOWN HEREON.
- ALL DISTANCES AND BEARINGS SHOWN HEREON ARE GROUND VALUES AS GPS MEASURED IN THE FIELD, WITH TIES TO WELLS MEASURED PERPENDICULAR TO SECTION LINES. THIS LOW DISTORTION PROJECTION (LDP) IS BASED ON THE NORTH AMERICAN DATUM OF 1983, U.S. SURVEY FOOT WITH A LATITUDE ORIGIN OF 40.568059°N, A CENTRAL MERIDIAN LONGITUDE OF 104.658844°W, AND A SCALE FACTOR ON THE CENTRAL MERIDIAN OF 1.00023 (EXACT). THE LDP BASIS OF BEARINGS IS GEODETIC NORTH.
- FIELD VERIFICATION OF MONUMENTS COMPLETED WITHIN 1 YEAR OF SIGNATURE DATE.



FIELD DATE:
08-18-17

DRAWING DATE:
11-17-17

BY:
DP

CHECKED:
CSG

SITE NAME:
CALVARY FARMS 19-L PAD

SURFACE LOCATION:
NE 1/4 SE 1/4 SEC. 19 T7N, R65W, 6TH P.M.
WELD COUNTY, COLORADO

PREPARED FOR:

BAYSWATER
EXPLORATION AND PRODUCTION, LLC