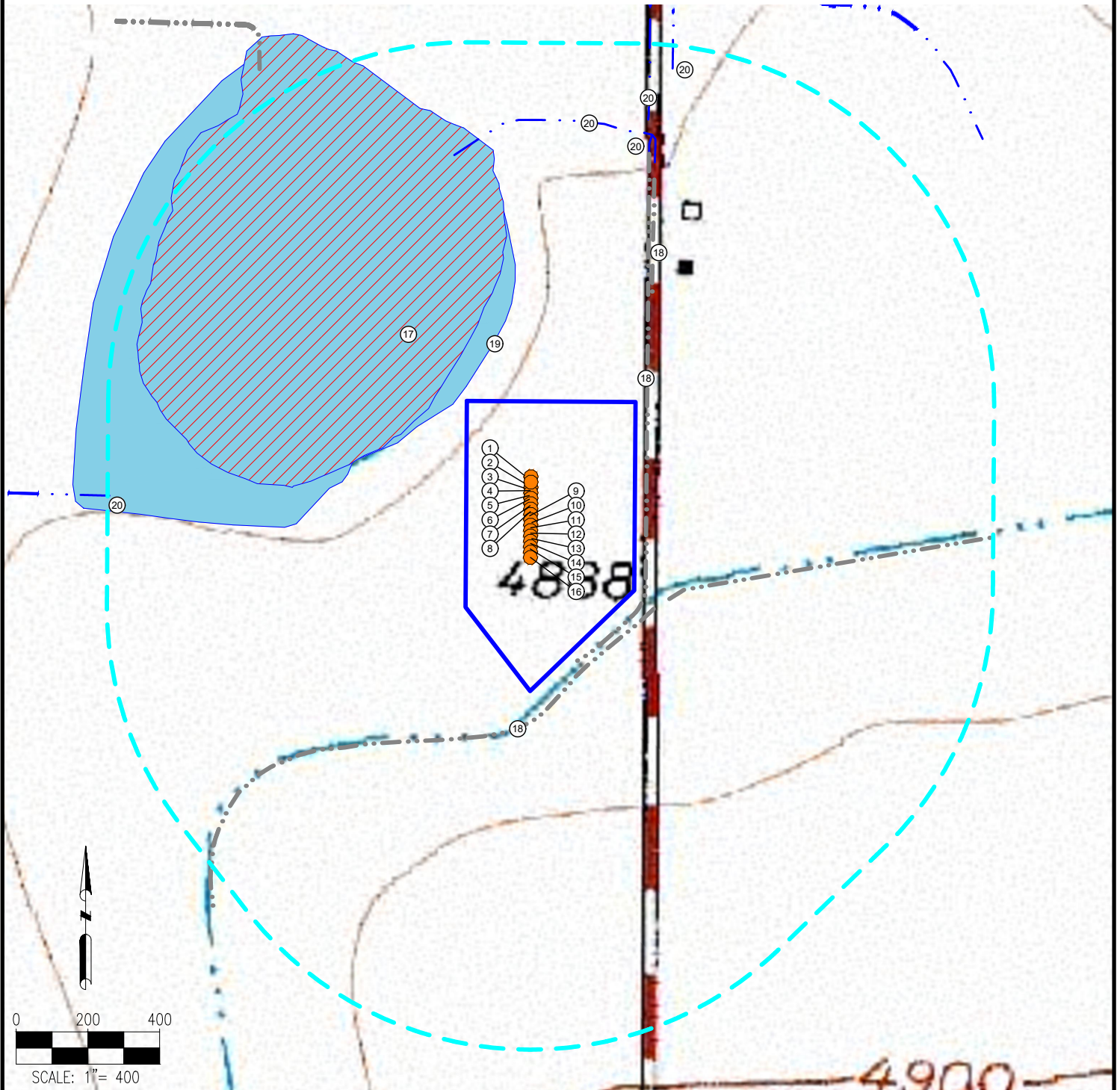


CALVARY FARMS 19-L PAD HYDROLOGY MAP



MEASUREMENTS ARE MADE FROM THE NEAREST EDGE OF THE DISTURBANCE AREA.

- | | | | |
|-----------------------------|------------------------------|----------------------------------------------------|----------------------------------------------------------------|
| 1. CALVARY FARMS M-20-21HN | 7. CALVARY FARMS QA-20-21HN | 13. CALVARY FARMS V-20-21HN | 19. POND IS ±26' NW |
| 2. CALVARY FARMS N-20-21HC | 8. CALVARY FARMS R-20-21HN | 14. CALVARY FARMS W-20-21HC | 20. DITCHES ARE ±634' NE, ±693' NE, ±751' N, ±936' NE, ±995' W |
| 3. CALVARY FARMS NA-20-21HN | 9. CALVARY FARMS S-20-21HN | 15. CALVARY FARMS WA-20-21HN | |
| 4. CALVARY FARMS O-20-21HN | 10. CALVARY FARMS T-20-21HC | 16. CALVARY FARMS X-20-21HN | |
| 5. CALVARY FARMS P-20-21HN | 11. CALVARY FARMS TA-20-21HN | 17. WETLAND IS ±82' NW | |
| 6. CALVARY FARMS Q-20-21HC | 12. CALVARY FARMS U-20-21HN | 18. CONCRETE DITCHES ARE ±30' E, ±59' SE, ±297' NE | |

LEGEND:

● = PROPOSED WELL

--- = DITCH

--- = CONCRETE DITCH

■ = DISTURBANCE AREA

■ = 1000' RADIUS

■ = WETLANDS

■ = POND

DISCLAIMER:
THIS PLOT DOES NOT REPRESENT A MONUMENTED LAND SURVEY AND SHOULD NOT BE RELIED UPON TO DETERMINE BOUNDARY LINES, PROPERTY OWNERSHIP OR OTHER PROPERTY INTERESTS. PARCEL LINES, IF DEPICTED HAVE NOT BEEN FIELD VERIFIED AND MAY BE BASED UPON PUBLICLY AVAILABLE DATA THAT ALSO HAS NOT BEEN INDEPENDENTLY VERIFIED.

DATA SOURCE:
TOPO MAP: USGS
NHD: USGS

PUBLICLY AVAILABLE DATA SOURCES HAVE NOT BEEN INDEPENDENTLY VERIFIED BY ASCENT.



7535 Hilltop Circle
Denver, CO 80221
(303) 928-7128
www.ascentgeomatics.com

FIELD DATE:
08-18-17

DRAWING DATE:
11-29-17

BY:
MMP

CHECKED:
CSG

SITE NAME:
CALVARY FARMS 19-L PAD

SURFACE LOCATION:

NE 1/4 SE 1/4 SEC. 19, T7N, R65W, 6TH P.M.
WELD COUNTY, COLORADO

PREPARED FOR:



BAYSWATER
EXPLORATION AND PRODUCTION, LLC