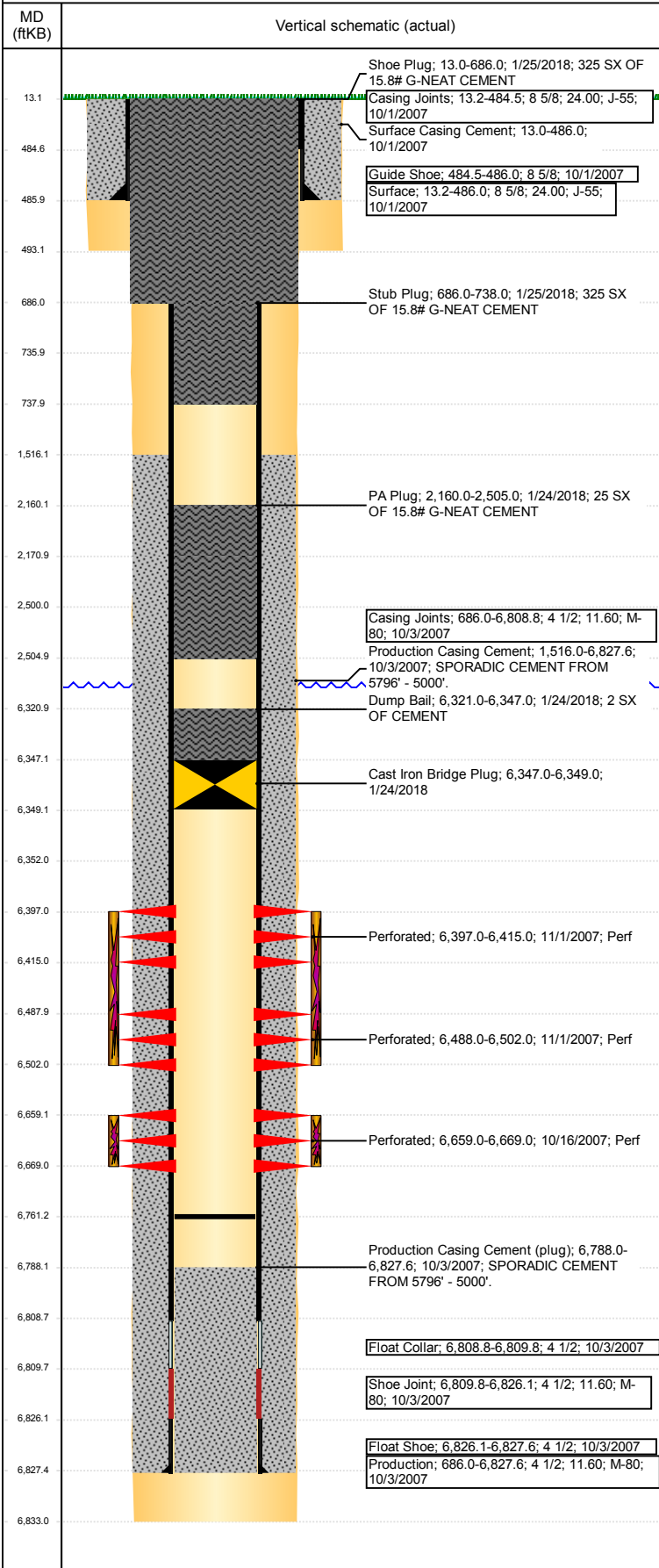


**Well Name: WELLS RANCH USX BB03-16**

VERTICAL - ORIGINAL HOLE, 2/21/2018 2:24:31 PM



### Well Header

API 05-123-26324	Business Unit DJ BASIN	District 15	Well Config VERTICAL
Original KB Elevation (ft) 4,706	KB - GL / MSL (ftKB) 13.00	Spud Date 9/30/2007	P & A Date 1/25/2018

Comment

Directions To Well  
67 & 68 EAST .2 SOUTH 1.9 MILES EAST 1.25 MILES SOUTH 1.1 MILES TO T  
SOUTHEAST 1.1 MILES SOUTH .9 WEST 1.4 MILES TO T NORTH .5 WEST .5  
SOUTHEAST .1 INTO

### Congressional Location

Quarter 3 SE	Quarter 4 SE	Section 3	Township 5	Twntshp N/S Dir N	Range 63	Range E/W Dir W
-----------------	-----------------	--------------	---------------	----------------------	-------------	--------------------

### Bottom Hole Location

North-South Distance (ft)	From N or S Line	East-West Distance (ft)	From E or W Line
---------------------------	------------------	-------------------------	------------------

### Plug Back Total Depths

Date	Depth (ftKB)	Method	Com
10/3/2007	6,808.8	CASING TALLY	TOP OF FLOAT COLLAR
10/12/2007	6,788.0	CASED HOLE LOG	DEPTH LOGGER ON CBL
11/27/2008	6,761.0	TAG	PUSHED CIFT P

### Wellbore Sections

Section Des	Size (in)	Act Top, MD (ftKB)	Act Btm, MD (ftKB)
SURFACE	12 1/4	13	493
PRODUCTION	7 7/8	493	6,833

### Zone Statuses

Zone Name	Status Date	Status	Fluid Type	Job	Prod Method
NIOBRARA	11/3/2007	PR		DRILLING/CO...	
NIOBRARA	1/25/2018	P&A		ABANDON WE...	
CODELL	11/3/2007	PR		DRILLING/CO...	
CODELL	1/25/2018	P&A		ABANDON WE...	

### Casing Strings

#### Surface, 486.0ftKB

Casing Description	Run Date	OD (in)	Wt/Len (l...)	Grade	Top, MD (ft...)	MD (ftKB)
Surface	10/1/2007	8 5/8	24.00	J-55	13.2	486.0

#### Production, 6,827.6ftKB

Casing Description	Run Date	OD (in)	Wt/Len (l...)	Grade	Top, MD (ft...)	MD (ftKB)
Production	10/3/2007	4 1/2	11.60	M-80	13.0	6,827.6

### Cement

Description	Top Depth (ftKB)	Bottom Depth (ftKB)
Surface Casing Cement	13.0	486.0
Production Casing Cement	1,516.0	6,827.6
PA PLUG	2,171.0	2,500.0
PA PLUG	6,321.0	6,347.0
PA PLUG	686.0	736.0
PA PLUG	13.0	686.0
Dump Bail	6,321.0	6,347.0
PA Plug	2,160.0	2,505.0
Stub Plug	686.0	738.0
Shoe Plug	13.0	686.0

### Tubing Strings

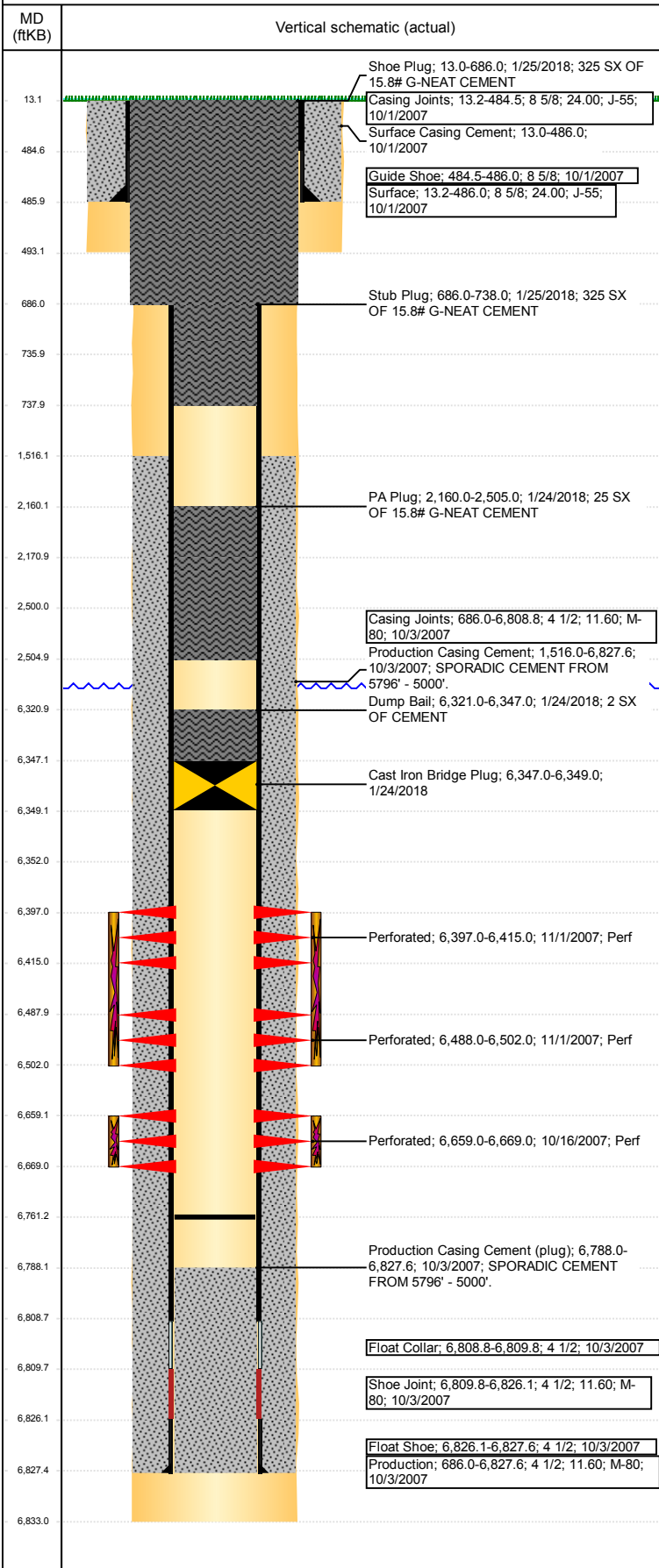
Tubing Description	Run Date	String...	ID (in)	Wt (lb/ft)	Grade	Len (ft)	Set De...
Tubing - Production	11/28/2007	2 3/8	2.00	4.70	J-55	6,627.00	

### Tubing Components

Item Des	OD (in)	Wt (lb/ft)	Grade	Jts	Len (ft)	Btm (ftKB)	Btm (TVD) (ftKB)
Tubing	2 3/8	4.70	J-55	216	6,625.00	6,638.0	
Seal Nipple	2 3/8				1.00	6,639.0	
Notched collar	2 3/8				1.00	6,640.0	

**Well Name: WELLS RANCH USX BB03-16**

VERTICAL - ORIGINAL HOLE, 2/21/2018 2:24:31 PM



Other In Hole				
Run Date	Des	OD (in)	Top (ftKB)	Btm (ftKB)
11/22/2017	Cast Iron Bridge Plug	4	6,347.0	6,352.0
1/24/2018	Cast Iron Bridge Plug	3.99	6,347.0	6,349.0

Logs				
Date	Type	Top, MD (ftKB)	Btm, MD (ftKB)	
10/3/2007	COMPENSATED DENSITY	2,490.0	6,810.0	
10/3/2007	INDUCTION	436.0	6,830.0	
10/12/2007	CEMENT BOND	1,390.0	6,786.0	
8/5/2016	GYRO	0.0	6,600.0	

Perforation Data					
Linked Zone	Bnch/St g	Sum of Entered Shot Total	Top (ftKB)	Btm (ftKB)	Date
NIOBRARA, ORIGINAL HOLE		72	6,397.00	6,415.00	11/1/2007
NIOBRARA, ORIGINAL HOLE		56	6,488.00	6,502.00	11/1/2007
CODELL, ORIGINAL HOLE		40	6,659.00	6,669.00	10/16/2007
<b>Total (Sum)</b>		<b>168</b>			

Stimulation Intervals		
Start Date	Primary Job Type	
11/1/2007	DRILLING/COMPLETION - ORIGINAL	
Technical Result	Tech Result Details	Tech Result Note
Comment		

Start Date	Primary Job Type	
11/1/2007	DRILLING/COMPLETION - ORIGINAL	
Technical Result	Tech Result Details	Tech Result Note
Comment		