

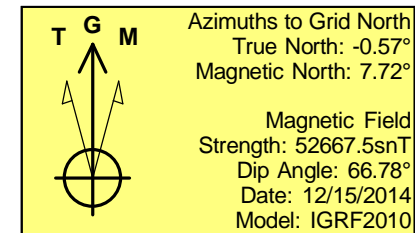
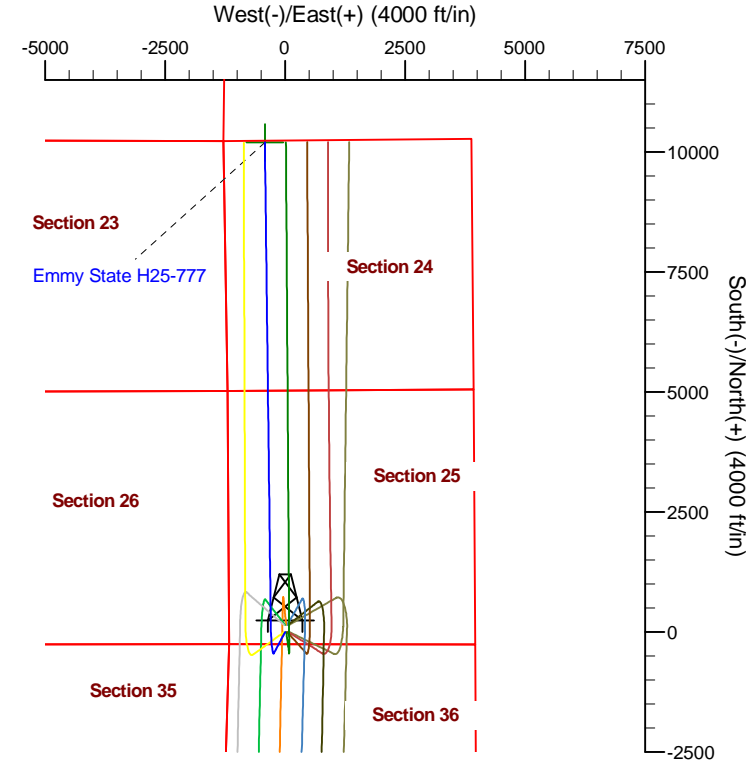
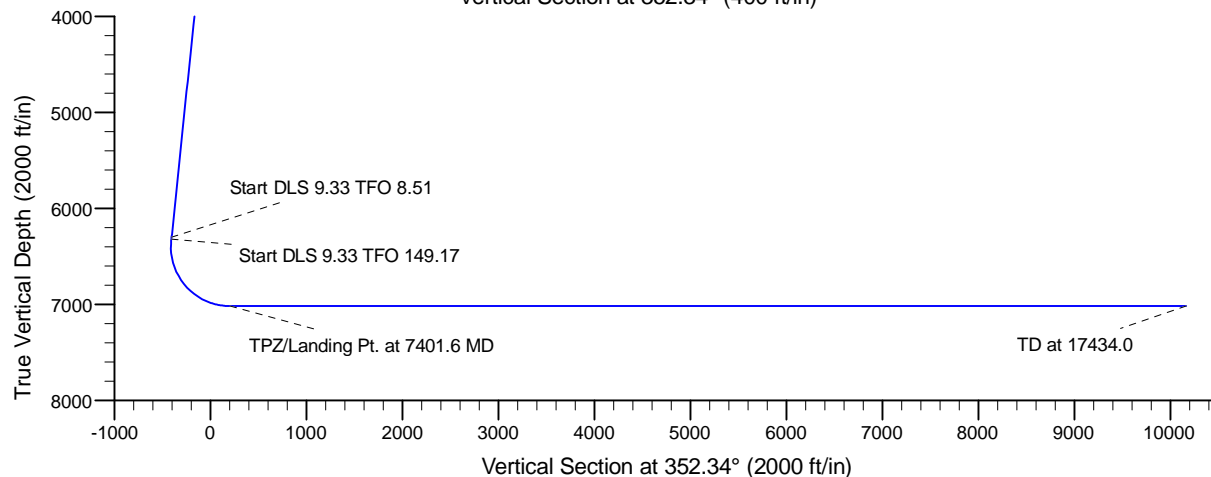
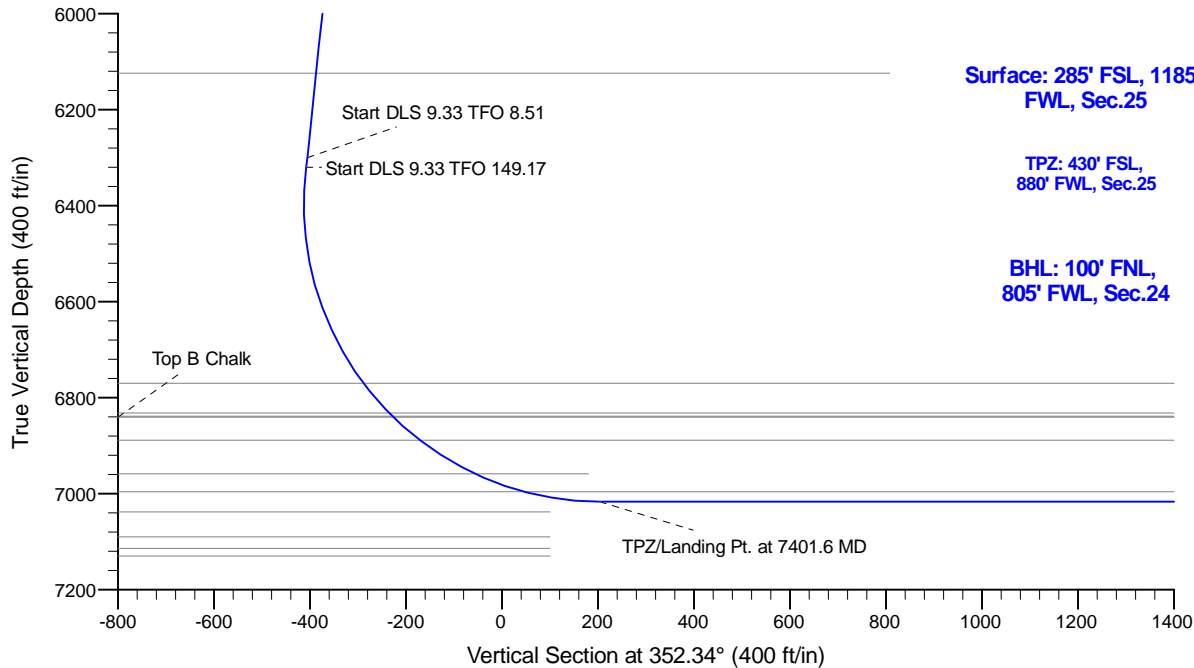
Project: Conceptual Wells
 Site: DP 408
 Well: Emmy State H25-777
 Wellbore: Wellbore #1
 Design: Design #1

Northern Region Drilling - DJ Basin

Geodetic System: US State Plane 1983
 Datum: North American Datum 1983
 Ellipsoid: GRS 1980
 Zone: Colorado Northern Zone
 System Datum: Mean Sea Level

SECTION DETAILS

Sec	MD	Inc	Azi	TVD	+N/-S	+E/-W	Dleg	TFace	VSec	Target
1	0.0	0.00	0.00	0.0	0.0	0.0	0.00	0.00	0.0	
2	2200.0	0.00	0.00	2200.0	0.0	0.0	0.00	0.00	0.0	
3	2562.5	7.25	208.00	2561.5	-20.2	-10.8	2.00	208.00	-18.6	
4	6331.1	7.25	208.00	6300.0	-440.1	-234.0	0.00	0.00	-405.0	
5	6351.9	9.18	209.80	6320.6	-442.7	-235.5	9.33	8.51	-407.4	
6	7401.6	90.00	359.30	7017.0	165.0	-300.0	9.33	149.17	203.5	
7	17434.0	90.00	359.30	7017.0	10196.7	-422.7	0.00	0.00	10162.1	Emmy State H25-777 BHL



WELL DETAILS: Emmy State H25-777

0.00.0	Ground Level: 4817.0	Latitude	Longitude
1313171.29	3246686.30	40.189680	-104.616990

Plan: Design #1 (Emmy State H25-777/Wellbore #1)

Created By: Colby Baxter

Date: 16:59, November 02 2017

OK to submit with 2A as per Noble Drilling

11/2/2017