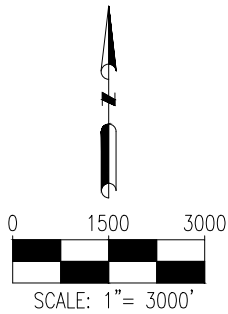
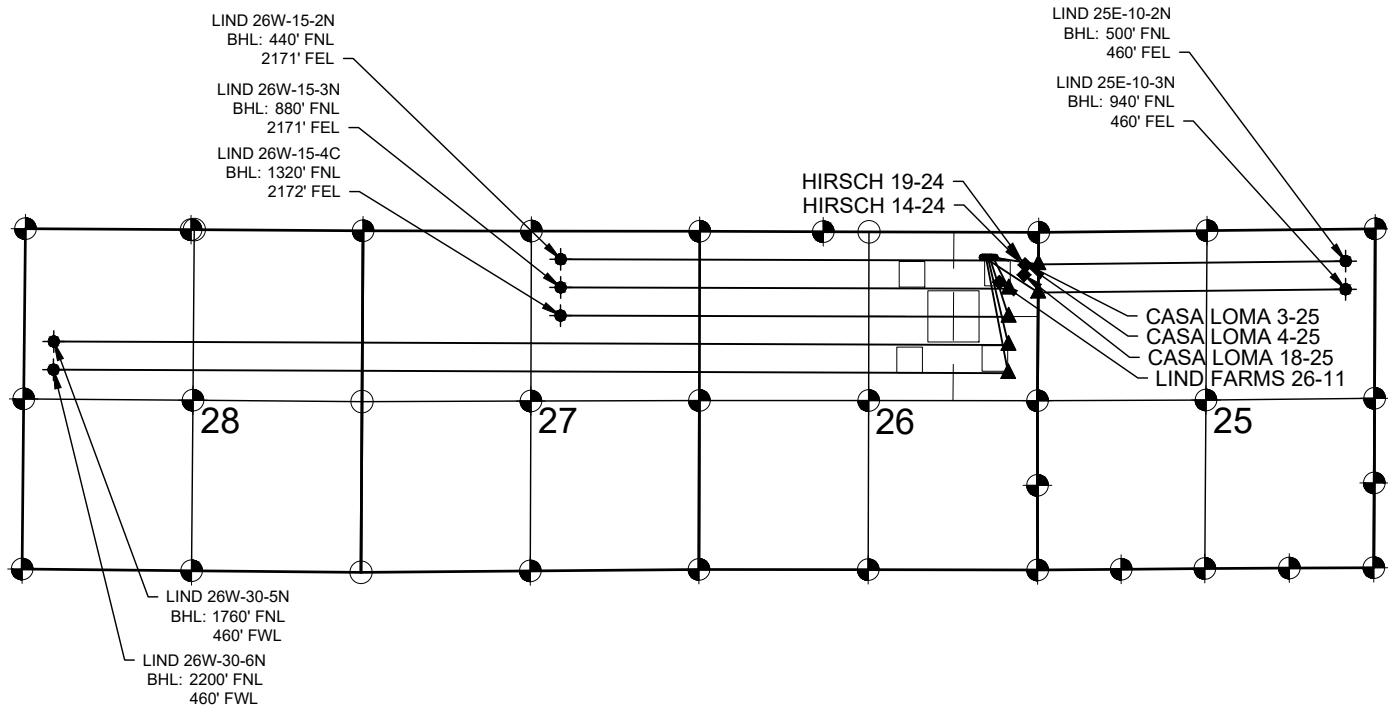


LIND 26-D PAD MULTI-WELL PLAN



LEGEND

- = EXISTING MONUMENT
- = CALCULATED POSITION
- = PROPOSED WELL
- ◆ = EXISTING WELL
- ▲ = BOTTOM HOLE
- ▲ = LANDING POINT
- BHL = BOTTOM HOLE LOCATION

NOTES:

- THIS FIELD SURVEY CONFORMS TO THE MINIMUM STANDARDS SET BY THE C.O.G.C.C., RULE NO. 215
- ALL DISTANCES AND BEARINGS SHOWN HEREON ARE GROUND VALUES AS GPS MEASURED IN THE FIELD, WITH TIES TO WELLS MEASURED PERPENDICULAR TO SECTION LINES. THIS LOW DISTORTION PROJECTION (LDP) IS BASED ON THE NORTH AMERICAN DATUM OF 1983, U.S. SURVEY FOOT WITH A LATITUDE ORIGIN OF 40.574349°N, A CENTRAL MERIDIAN LONGITUDE OF 104.926734°W, AND A SCALE FACTOR ON THE CENTRAL MERIDIAN OF 1.000237 (EXACT). THE LDP BASIS OF BEARINGS IS GEODETIC NORTH.
- FIELD VERIFICATION OF MONUMENTS COMPLETED WITHIN 1 YEAR OF SIGNATURE DATE.

NOTES:

- LIND 25E-10-2N TO BE AT 393' FNL & 737' FEL.
BOTTOM HOLE AT 500' FNL & 460' FEL, SEC. 25.
- LIND 25E-10-3N TO BE AT 393' FNL & 849' FEL.
BOTTOM HOLE AT 940' FNL & 460' FEL, SEC. 25.
- LIND 26W-15-2N TO BE AT 393' FNL & 681' FEL.
BOTTOM HOLE AT 440' FNL & 2171' FEL, SEC. 27.
- LIND 26W-15-3N TO BE AT 393' FNL & 709' FEL.
BOTTOM HOLE AT 880' FNL & 2171' FEL, SEC. 27.
- LIND 26W-15-4C TO BE AT 393' FNL & 765' FEL.
BOTTOM HOLE AT 1320' FNL & 2172' FEL, SEC. 27.
- LIND 26W-30-5N TO BE AT 393' FNL & 793' FEL.
BOTTOM HOLE AT 1760' FNL & 460' FWL, SEC. 28.
- LIND 26W-30-6N TO BE AT 393' FNL & 821' FEL.
BOTTOM HOLE AT 2200' FNL & 460' FWL, SEC. 28.

- EX. HIRSCH 19-24 IS AT 457' FNL & 254' FEL.
- EX. HIRSCH 14-24 IS AT 483' FNL & 231' FEL.
- EX. LIND FARMS 26-11 IS AT 782' FNL & 603' FEL.
- EX. CASA LOMA 3-25 IS AT 516' FNL & 201' FEL.
- EX. CASA LOMA 4-25 IS AT 529' FNL & 188' FEL.
- EX. CASA LOMA 18-25 IS AT 667' FNL & 223' FEL.