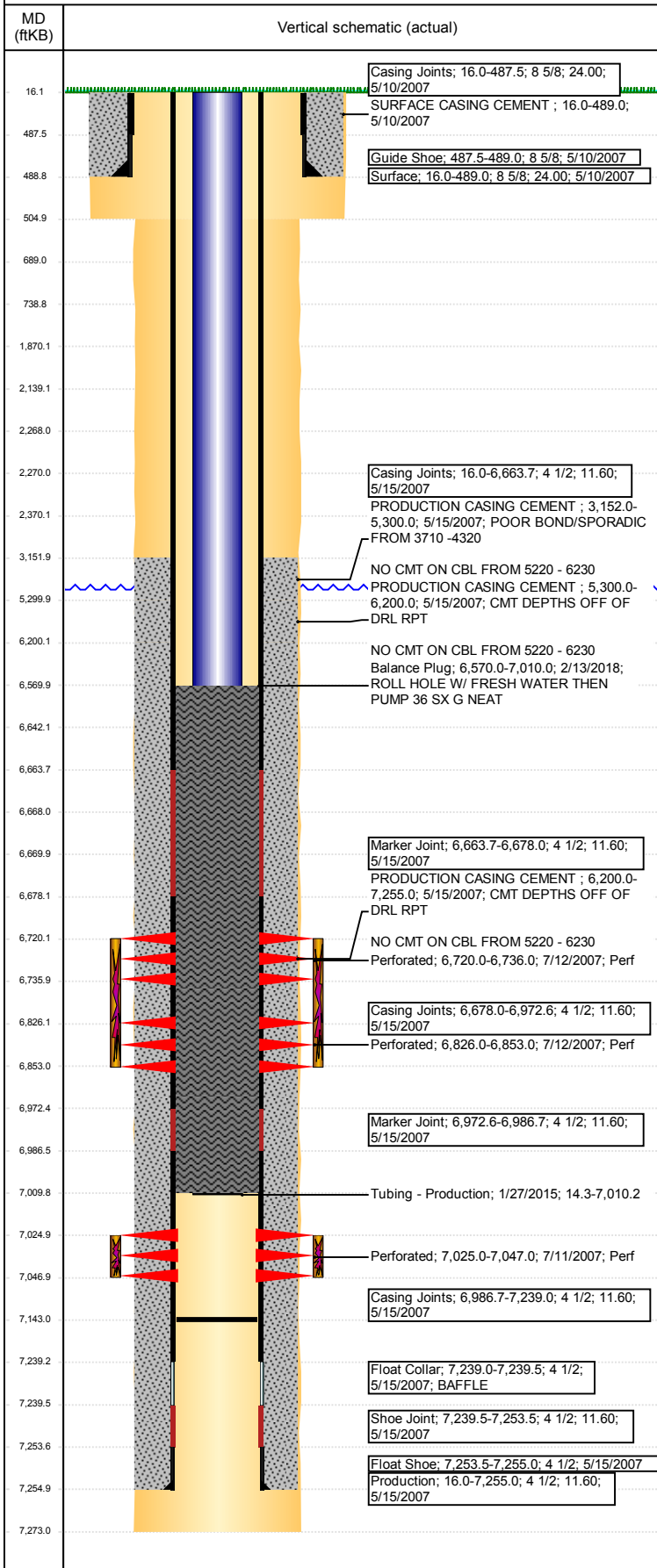


# Wellbore Schematic Input Report

**Well Name: WEIDENKELLER 01-25**

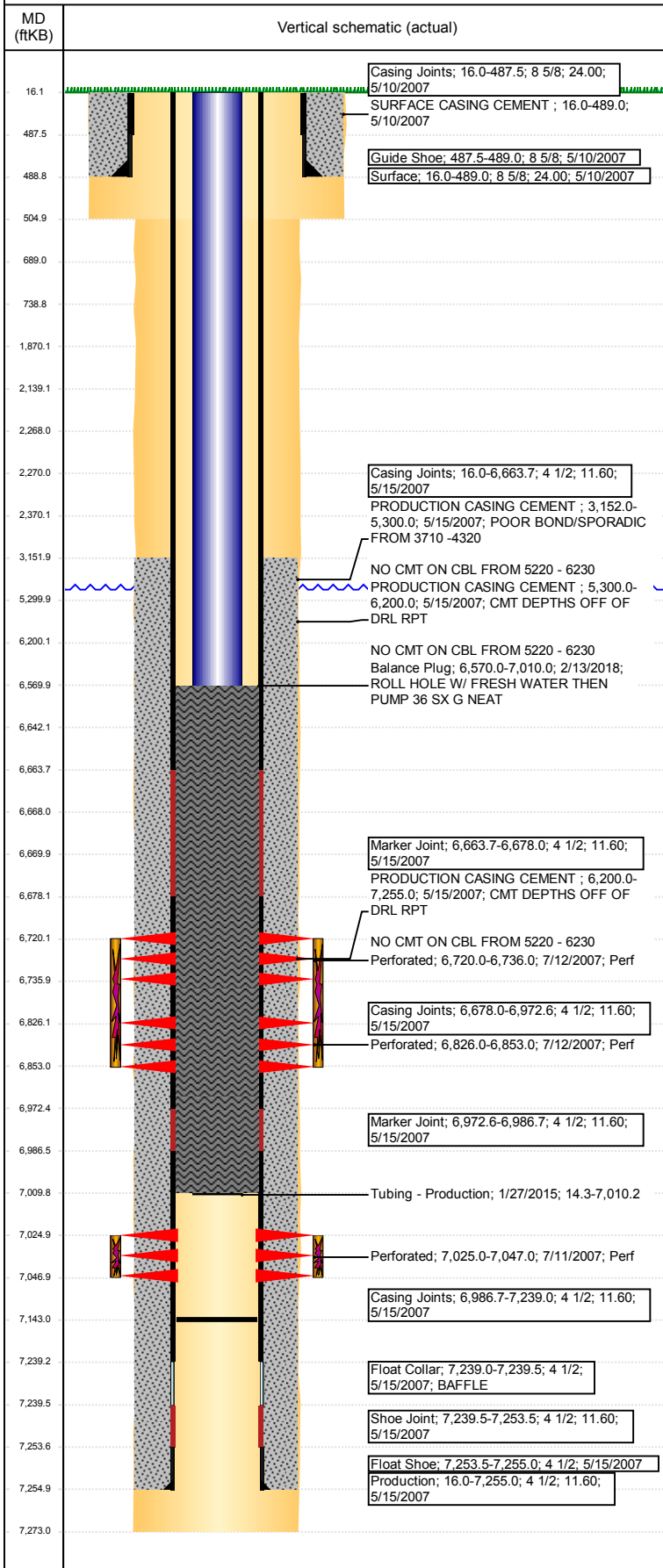
VERTICAL - ORIGINAL HOLE, 2/20/2018 4:43:20 PM



Well Header							
API 05-123-24971		Well Report Center 424424459		Well Configuration Type VERTICAL			
Original KB Elevation (ft) 4,749		KB - GL / MSL (ftKB) 16.00		Spud Date 5/10/2007		P & A Date	
Production Route Watt - A3-03			Well Production Status TA			SoRT Ignore Yes	
Directions To Well WCR 47 & 50, SOUTH 1/10, EAST 2/10, SOUTH INTO				Actual Latitude (°) 40.34572000		Actual Longitude (°) -104.61693000	
Comment CEMENT BASKET @ 3585'. FIELD OPERATIONS NOTICE - FLOWLINES ABANDONED PER RULE 1103, RCVD 6/29/17.							
Congressional Location							
Quarter 3 NW	Quarter 4 NW	Section 1	Township 4	Twnshp N/S Dir N	Range 65	Range E/W Dir W	
Rig Operator							
Rig Operator							
Plug Back Total Depths							
Date	Depth (ftKB)	Method		Com			
1/26/2015	7,143.0	TAG		DRILL OUT CMT CBP. DRILL OUT & CHASE TO B...			
Wellbore Sections							
Section Des		Size (in)		Act Top, MD (ftKB)		Act Btm, MD (ftKB)	
SURFACE		12 1/4		16		505	
PRODUCTION		7 7/8		505		7,273	
Zone Statuses							
Zone Name		Status Date		Status			
CODELL		10/27/2016		TA			
NIOBRARA		1/19/2015		TA			
Casing Strings							
Surface, 489.0ftKB							
Casing Description Surface	Run Date 5/10/2007	OD (in) 8 5/8	Wt/Len (l... 24.00	Grade	Top, MD (ft... 16.0	MD (ftKB) 489.0	
Production, 7,255.0ftKB							
Casing Description Production	Run Date 5/15/2007	OD (in) 4 1/2	Wt/Len (l... 11.60	Grade	Top, MD (ft... 16.0	MD (ftKB) 7,255.0	
Cement							
Des		Start Date		Top (ftKB)		Btm (ftKB)	
SURFACE CASING CEMENT		5/10/2007		16.0		489.0	
PRODUCTION CASING CEMENT		5/15/2007		3,152.0		5,300.0	
PRODUCTION CASING CEMENT		5/15/2007		5,300.0		6,200.0	
Balance Plug		2/13/2018		6,570.0		7,010.0	
Proposed Cement							
Des				Top (ftKB)		Btm (ftKB)	
DUMP BAIL				6,642.0		6,668.0	
COURTESY PLUG				2,270.0		2,370.0	
COURTESY PLUG				2,139.0		2,268.0	
COURTESY PLUG				1,870.0		2,370.0	
SHOE PLUG				689.0		739.0	
SHOE PLUG				16.1		689.0	
Tubing Strings							
Tubing Description Tubing - Production	Run Date 1/27/2015	String... 2 3/8	ID (in) 2.00	Wt (lb/ft) 4.70	Grade J-55	Len (ft) 6,995.90	Set De...
Tubing Components							
Item Des	OD (in)	Wt (lb/ft)	Grade	Jts	Len (ft)	Btm (ftKB)	Btm (TVD) (ftKB)
EUE 8rd Tubing	2 3/8	4.70	J-55	227	6,994.20	7,008.5	
Pump Seating	2 3/8	1.10		1	1.10	7,009.6	
Nipple							
Notched collar	2 3/8			1	0.60	7,010.2	
Other In Hole							
Run Date	Des			OD (in)	Top (ftKB)	Btm (ftKB)	
Proposed Other In Hole							
Des			OD (in)		Top (ftKB)		Btm (ftKB)
CICR			4		2,268.0		2,270.0
Cast Iron Bridge Plug			4		6,668.0		6,670.0

**Well Name: WEIDENKELLER 01-25**

VERTICAL - ORIGINAL HOLE, 2/20/2018 4:43:21 PM



Logs			
Date	Type	Top, MD (ftKB)	Btm, MD (ftKB)
5/14/2007	COMPENSATED DENSITY	3,700.0	7,249.0
5/14/2007	INDUCTION	489.0	7,269.0
7/9/2007	CBL/CCL/GR	3,000.0	7,206.0
9/26/2013	GYRO	0.0	6,850.0

Perforation Data				
Linked Zone	Sum of Entered Shot Total	Top (ftKB)	Btm (ftKB)	Date
NIOBRARA, ORIGINAL HOLE	32	6,720.00	6,736.00	7/12/2007
NIOBRARA, ORIGINAL HOLE	108	6,826.00	6,853.00	7/12/2007
CODELL, ORIGINAL HOLE	88	7,025.00	7,047.00	7/11/2007
<b>Total (Sum)</b>	<b>228</b>			

Proposed Perforations				
Linked Zone	Sum of En...	Top Depth (ftKB)	Btm (ftKB)	Date
	0	2,370.00	2,370.00	1/22/2018
<b>Total (Sum)</b>	<b>0</b>			

Job Supply Amounts						
Supply Item Des	Type	Uni...	Job Category	Total ...	Total ...	Total ...