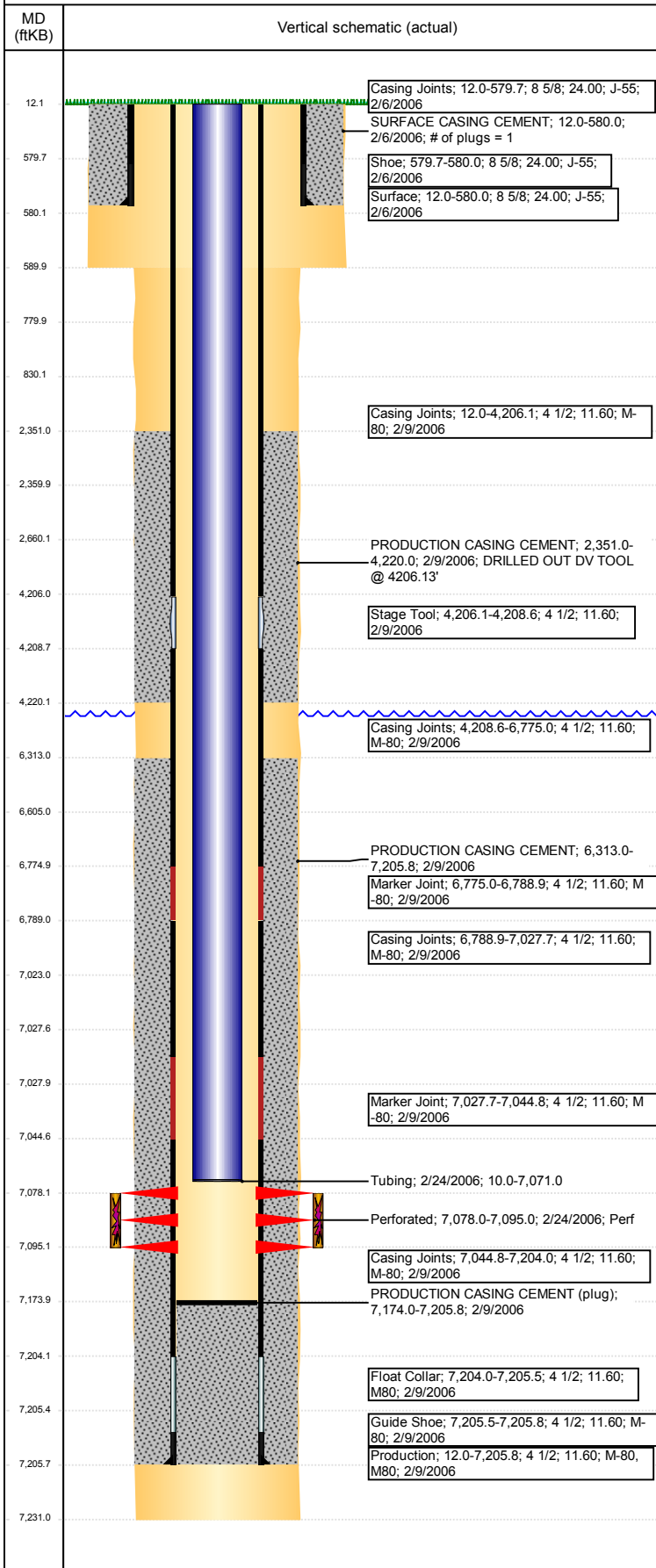


Wellbore Schematic Input Report

Well Name: HUNGENBERG E28-13

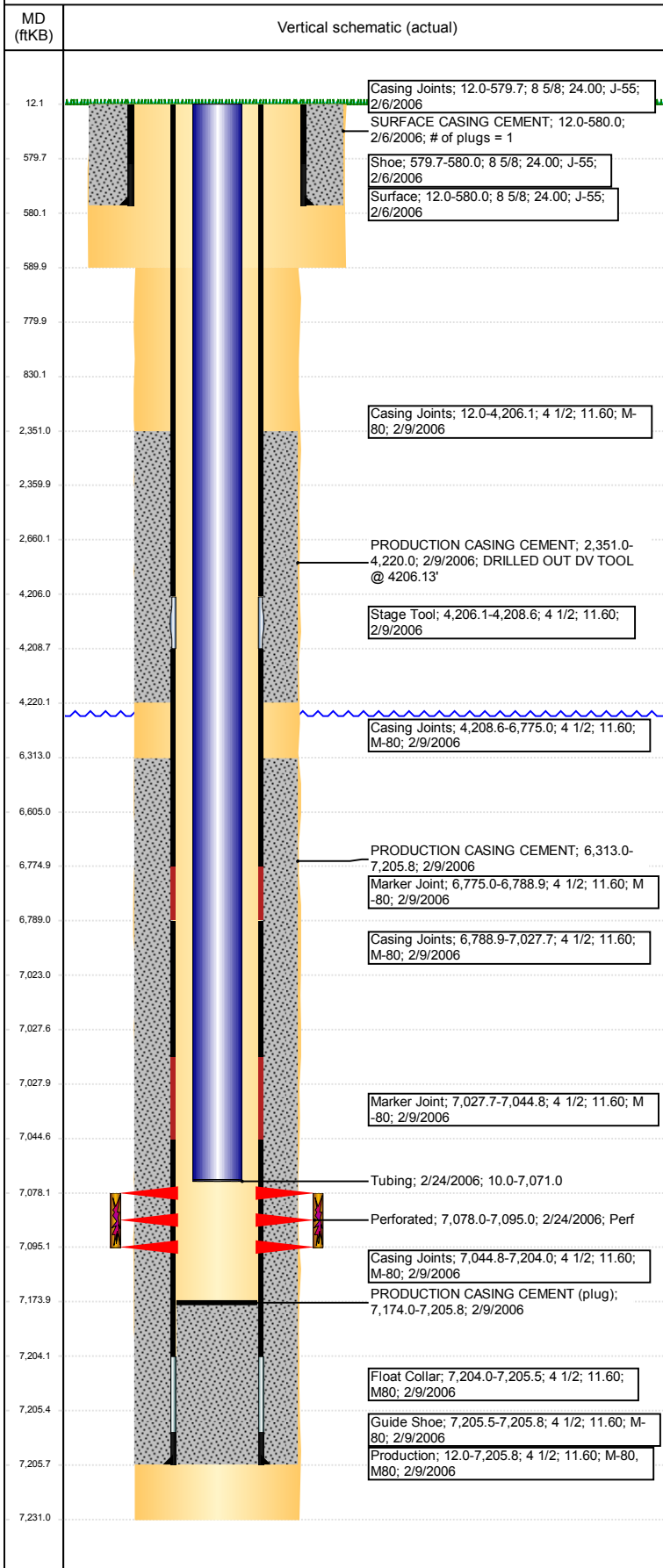
VERTICAL - ORIGINAL HOLE, 2/20/2018 4:39:22 PM



Well Header							
API 05-123-23531		Well Report Center 422131056			Well Configuration Type VERTICAL		
Original KB Elevation (ft) 4,714		KB - GL / MSL (ftKB) 12.00		Spud Date 2/5/2006		P & A Date	
Production Route A2-04			Well Production Status PR				SoRT Ignore No
Directions To Well				Actual Latitude (°) 40.45182147		Actual Longitude (°) -104.67592631	
Comment DV TOOL @ 4206'. DRILL OUT 2/24/06							
Congressional Location							
Quarter 3 SW	Quarter 4 SW	Section 28	Township 6	Twnshp N/S Dir N	Range 65	Range E/W Dir W	
Rig Operator							
Rig Operator							
Plug Back Total Depths							
Date	Depth (ftKB)	Method			Com		
2/24/2006	7,174.0	CASED HOLE LOG			DEPTH LOGGER		
Wellbore Sections							
Section Des		Size (in)		Act Top, MD (ftKB)		Act Btm, MD (ftKB)	
SURFACE		12 1/4		12		590	
PRODUCTION		7 7/8		590		7,231	
Zone Statuses							
Zone Name		Status Date			Status		
CODELL		3/8/2006			PR		
Casing Strings							
Surface, 580.0ftKB							
Casing Description	Run Date	OD (in)	Wt/Len (l...	Grade	Top, MD (ft...	MD (ftKB)	
Surface	2/6/2006	8 5/8	24.00	J-55	12.0	580.0	
Production, 7,205.8ftKB							
Casing Description	Run Date	OD (in)	Wt/Len (l...	Grade	Top, MD (ft...	MD (ftKB)	
Production	2/9/2006	4 1/2	11.60	M-80	12.0	7,205.8	
Cement							
Des		Start Date		Top (ftKB)		Btm (ftKB)	
SURFACE CASING CEMENT		2/6/2006		12.0		580.0	
PRODUCTION CASING CEMENT		2/9/2006		2,351.0		4,220.0	
PRODUCTION CASING CEMENT		2/9/2006		6,313.0		7,205.8	
Proposed Cement							
Des				Top (ftKB)		Btm (ftKB)	
Cement Plug				6,605.0		7,023.0	
Balance Plug				2,360.0		2,660.0	
Stub Plug				780.0		830.0	
Shoe Plug				12.0		780.0	
Tubing Strings							
Tubing Description	Run Date	String...	ID (in)	Wt (lb/ft)	Grade	Len (ft)	Set De...
Tubing	2/24/2006	2 3/8	2.00	4.70	J-55	7,060.98	
Tubing Components							
Item Des	OD (in)	Wt (lb/ft)	Grade	Jts	Len (ft)	Btm (ftKB)	Btm (TVD) (ftKB)
Tubing	2 3/8	4.70	J-55	214	7,059.98	7,070.0	
Pump Seating	2 3/8	1.10		1	0.50	7,070.5	
Nipple							
Notched collar	2 3/8			1	0.50	7,071.0	
Other In Hole							
Run Date	Des			OD (in)	Top (ftKB)	Btm (ftKB)	
Proposed Other In Hole							
Des		OD (in)		Top (ftKB)		Btm (ftKB)	
Cast Iron Bridge Plug		4		7,023.0		7,028.0	
Logs							
Date	Type				Top, MD (ftKB)		Btm, MD (ftKB)
2/4/2006	COMPENSATED DENSITY				2,600.0		7,211.0
2/4/2006	INDUCTION				580.0		7,231.0
2/23/2006	CBL/CCL/GR				1,900.0		7,192.0

Well Name: HUNGENBERG E28-13

VERTICAL - ORIGINAL HOLE, 2/20/2018 4:39:23 PM



Perforation Data						
Linked Zone	Sum of Entered Shot Total	Top (ftKB)	Btm (ftKB)	Date		
CODELL, ORIGINAL HOLE	68	7,078.00	7,095.00	2/24/2006		
Total (Sum)	68					
Job Supply Amounts						
Supply Item Des	Type	Uni...	Job Category	Total...	Total...	Total...