

HALLIBURTON

iCem[®] Service

EXTRACTION OIL & GAS-EBUS

Date: Thursday, November 09, 2017

LAUNER 3 SURFACE

Job Date: Tuesday, November 07, 2017

Sincerely,

Julia Nichols

Legal Notice

Disclaimer:

All information in this report is provided subject to the terms and conditions which govern the services provided by Halliburton. Halliburton personnel use their best efforts in gathering information and their best judgment in interpreting it, but any interpretation, research, analysis or recommendation furnished by Halliburton are opinions based upon inferences from measurements and empirical relationships and assumptions, which inferences and empirical relationships and assumptions are not infallible, and with respect to which professionals in the industry may differ. Accordingly, HALLIBURTON IS UNABLE TO GUARANTEE THE ACCURACY OF ANY CHART INTERPRETATION, RESEARCH ANALYSIS, OR JOB RECOMMENDATION and any interpretation or recommendation is not for use of or reliance upon by any third party. The customer has full responsibility for any of its decisions which are based on the information provided in this report.

Table of Contents

1.0 Cementing Job Summary 4

 1.1 Executive Summary4

2.0 Real-Time Job Summary 7

 2.1 Job Event Log7

3.0 Attachments..... 9

 3.1 CUSTOM RESULTS - JOB CHART WITH EVENTS9

 3.2 CUSTOM RESULTS - JOB CHART WITHOUT EVENTS10

1.0 Cementing Job Summary

1.1 Executive Summary

Halliburton appreciates the opportunity to perform the cementing services on the **LAUNER 3** cement **SURFACE** casing job. A pre-job safety meeting was held before the job where details of the job were discussed, potential safety hazards were reviewed, and environmental compliance procedures were outlined.

Approximately 28 barrels of cement were returned to surface.

Halliburton maintains a continuous quality improvement process and appreciates any comments or suggestions that you may have. Halliburton again thanks you for the opportunity to perform service work on this well. We hope to be your solutions provider for future projects.

Respectfully,

Halliburton [Fort Lupton]

HALLIBURTON

Cementing Job Summary

The Road to Excellence Starts with Safety

Sold To #: 389404	Ship To #: 3818090	Quote #:	Sales Order #: 0904417420							
Customer: EXTRACTION OIL & GAS -		Customer Rep: SEAN MCINTIRE								
Well Name: LAUNER	Well #: 3	API/UWI #: 05-123-45175-00								
Field: WATTENBERG	City (SAP): WINDSOR	County/Parish: WELD	State: COLORADO							
Legal Description: SE SE-26-7N-87W-861FSL-301FEL										
Contractor:		Rig/Platform Name/Num: Cartel 41								
Job BOM: 7521 7521										
Well Type: HORIZONTAL OIL										
Sales Person: HALAMERICA\HX38199		Srv Supervisor: Vitali Neverdasov								
Job										
Formation Name										
Formation Depth (MD)	Top	Bottom								
Form Type	BHST									
Job depth MD	1554ft	Job Depth TVD	1554"							
Water Depth		Wk Ht Above Floor								
Perforation Depth (MD)	From	To								
Well Data										
Description	New / Used	Size in	ID in	Weight lbm/ft	Thread	Grade	Top MD ft	Bottom MD ft	Top TVD ft	Bottom TVD ft
Casing	0	9.625	8.921	36	8 RD	J-55	0	1554	0	0
Open Hole Section			13.5				0	1554	0	1554
Tools and Accessories										
Type	Size in	Qty	Make	Depth ft		Type	Size in	Qty	Make	
Guide Shoe	9.625					Top Plug	9.625	1	HES	
Float Shoe	9.625	1	NA	1554		Bottom Plug	9.625	0	HES	
Float Collar	9.625	1	NA	1514		SSR plug set	9.625	0	HES	
Insert Float	9.625					Plug Container	9.625	1	HES	
Stage Tool	9.625					Centralizers	9.625	0	NA	
Fluid Data										
Stage/Plug #: 1										
Fluid #	Stage Type	Fluid Name	Qty	Qty UoM	Mixing Density lbm/gal	Yield ft3/sack	Mix Fluid Gal	Rate bbl/min	Total Mix Fluid Gal	
1	FRESH WATER	FRESH WATER	20	bbl	8.33					
Stage/Plug #: 2										
Fluid #	Stage Type	Fluid Name	Qty	Qty UoM	Mixing Density lbm/gal	Yield ft3/sack	Mix Fluid Gal	Rate bbl/min	Total Mix Fluid Gal	
2	Red Dye Spacer	Red Dye Spacer	10	bbl	8.33					
Stage/Plug #: 3										
Fluid #	Stage Type	Fluid Name	Qty	Qty UoM	Mixing Density lbm/gal	Yield ft3/sack	Mix Fluid Gal	Rate bbl/min	Total Mix Fluid Gal	

last updated on 11/9/2017 4:23:34 PM

Page 1 of 3

iCem® Service

(v. 4.4.18)

Created: Thursday, November 09, 2017

HALLIBURTON

Cementing Job Summary

3	SwiftCem	SWIFTCEN (TM) SYSTEM	550	sack	13.5	1.74		5	9.2
9.20 Gal		FRESH WATER							
Fluid #	Stage Type	Fluid Name	Qty	Qty UoM	Mixing Density lbm/gal	Yield ft3/sack	Mix Fluid Gal	Rate bbl/mi n	Total Mix Fluid Gal
4	Fresh Water	Fresh Water	118	bbl	8.33				
Cement Left In Pipe		Amount	40 ft		Reason			Shoe Joint	
Comment : 28 BBLS OF CEMENT BACK TO SURFACE									

2.0 Real-Time Job Summary

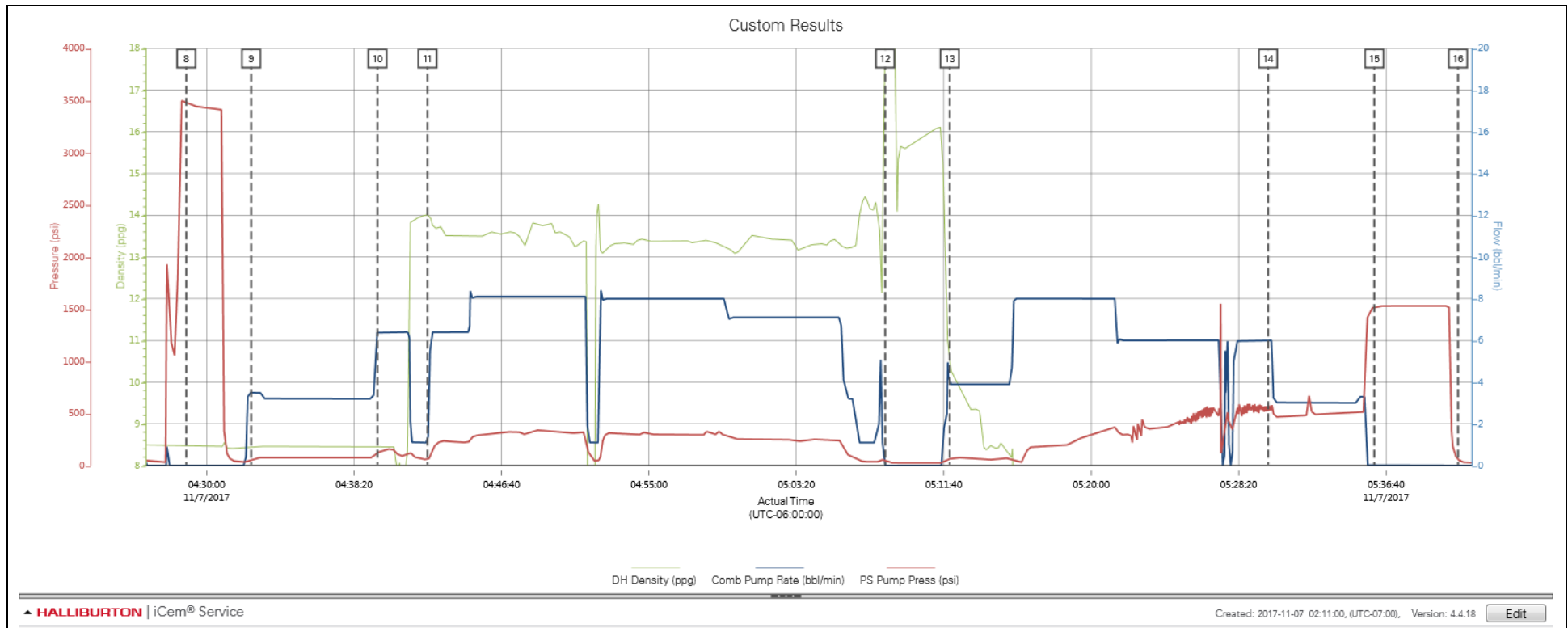
2.1 Job Event Log

Type	Seq. No.	Activity	Graph Label	Date	Time	Source	DH Density (ppg)	Comb Pump Rate (bbl/min)	PS Pump Press (psi)	Comments
Event	1	Other	Other	11/6/2017	20:15:00	USER				BULK TRUCKS ARRIVED ON LOCATION RELOADED
Event	2	Other	Other	11/6/2017	20:25:00	USER				SPOT TRUCKS
Event	3	Safety Meeting - Pre Rig-Up	Safety Meeting - Pre Rig-Up	11/6/2017	20:35:00	USER				HELD PRE RIG UP JSA
Event	4	Rig-up Lines	Rig-up Lines	11/6/2017	20:47:00	USER				RIG UP ALL SURFACE LINES TO THE BUFFER ZONE
Event	5	Casing on Bottom	Casing on Bottom	11/7/2017	03:45:00	USER	8.33	1.10	34.00	CASING ON BOTTOM
Event	6	Safety Meeting - Pre Job	Safety Meeting - Pre Job	11/7/2017	03:56:00	USER	8.33	1.00	35.00	PRE JOB SAFETY MEETING
Event	7	Start Job	Start Job	11/7/2017	04:22:28	COM4				
Event	8	Pressure Test	Pressure Test	11/7/2017	04:28:51	USER	8.49	0.00	3469.00	LOAD LINE AND PRESSURE TEST TO 3000 PSI
Event	9	Pump Spacer 1	Pump Spacer 1	11/7/2017	04:32:31	USER	8.45	3.50	62.00	PUMP 20 BBLS OF FRESH WATER AHEAD
Event	10	Pump Spacer 2	Pump Spacer 2	11/7/2017	04:39:39	USER	8.45	6.40	119.00	PUMP 10 BBLS OF WATER + DYE
Event	11	Pump Cement	Pump Cement	11/7/2017	04:42:29	USER	14.03	1.10	58.00	BATCH/ WEIGH/ PUMP 550 SKS (170.5 BBLS) OF SWIFCEM @ 13.5 PPG
Event	12	Shutdown	Shutdown	11/7/2017	05:08:21	USER	18.33	0.00	39.00	SHUTDOWN/ DROP TOP PLUG
Event	13	Pump Displacement	Pump Displacement	11/7/2017	05:12:00	USER	10.44	3.90	65.00	START DISPLACEMENT WITH WATER
Event	14	Other	Other	11/7/2017	05:30:00	USER	7.93	6.00	586.00	SLOW RATE
Event	15	Bump Plug	Bump Plug	11/7/2017	05:36:00	USER	7.95	0.00	1522.00	PER CUSTOMER BUMP PLUF @ 1500 PSI AND HOLD PRESSURE FOR 5 MIN FOR CASING TEST
Event	16	Check Floats	Check Floats	11/7/2017	05:40:44	USER	0.94	0.00	58.00	FLOATS HELD
Event	17	End Job	End Job	11/7/2017	05:43:00	COM4	7.91	8.50	340.00	
Event	18	Safety Meeting - Pre	Safety Meeting - Pre Rig-	11/7/2017	05:52:00	USER	-0.38	0.00	26.00	HELD RIG DOWN JSA

Rig-Down			Up					
Event	19	Other	Other	11/7/2017	06:20:00	USER		BULK TRUCKS LEAVING LOCATION TO GET RELOADED

3.0 Attachments

3.1 CUSTOM RESULTS - JOB CHART WITH EVENTS



3.2 CUSTOM RESULTS - JOB CHART WITHOUT EVENTS

