

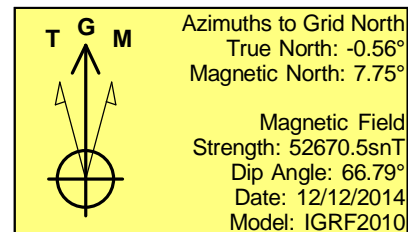
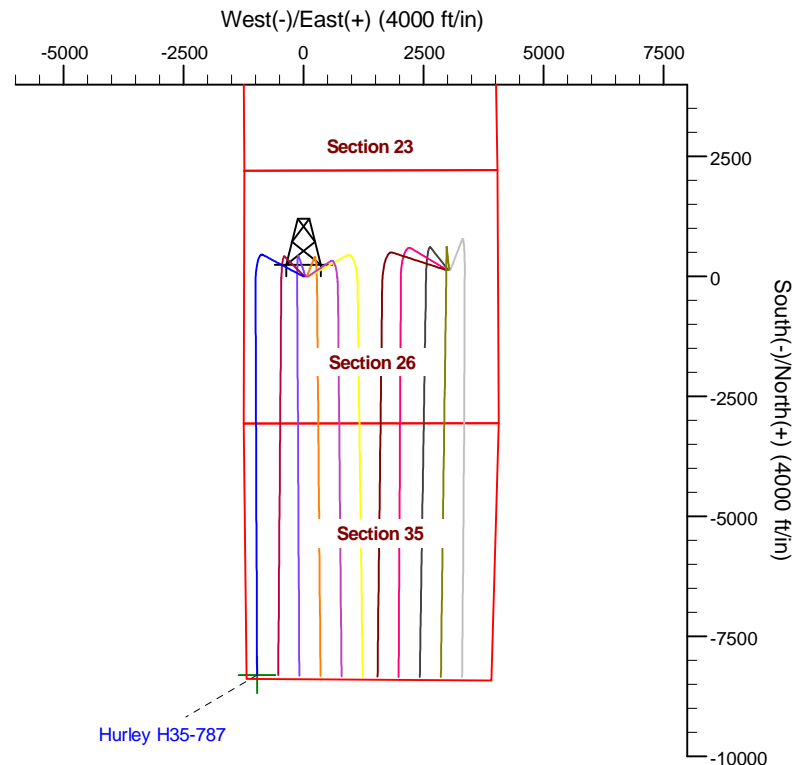
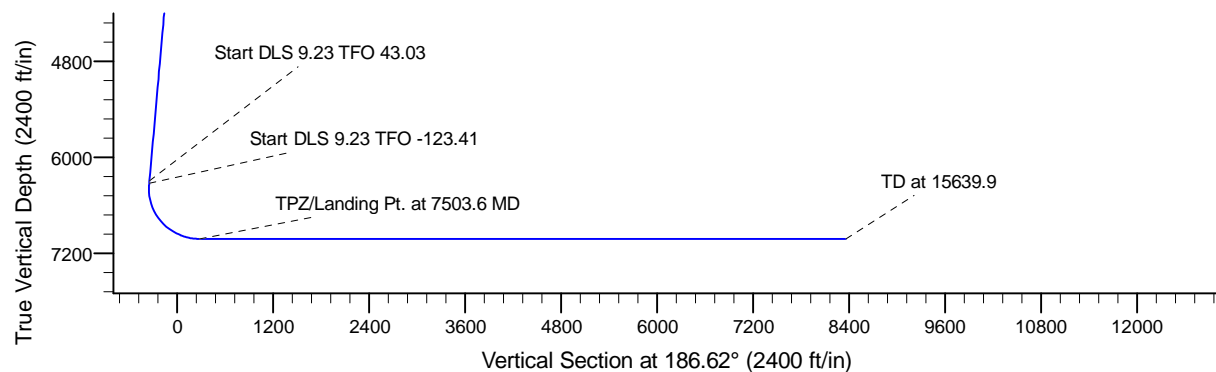
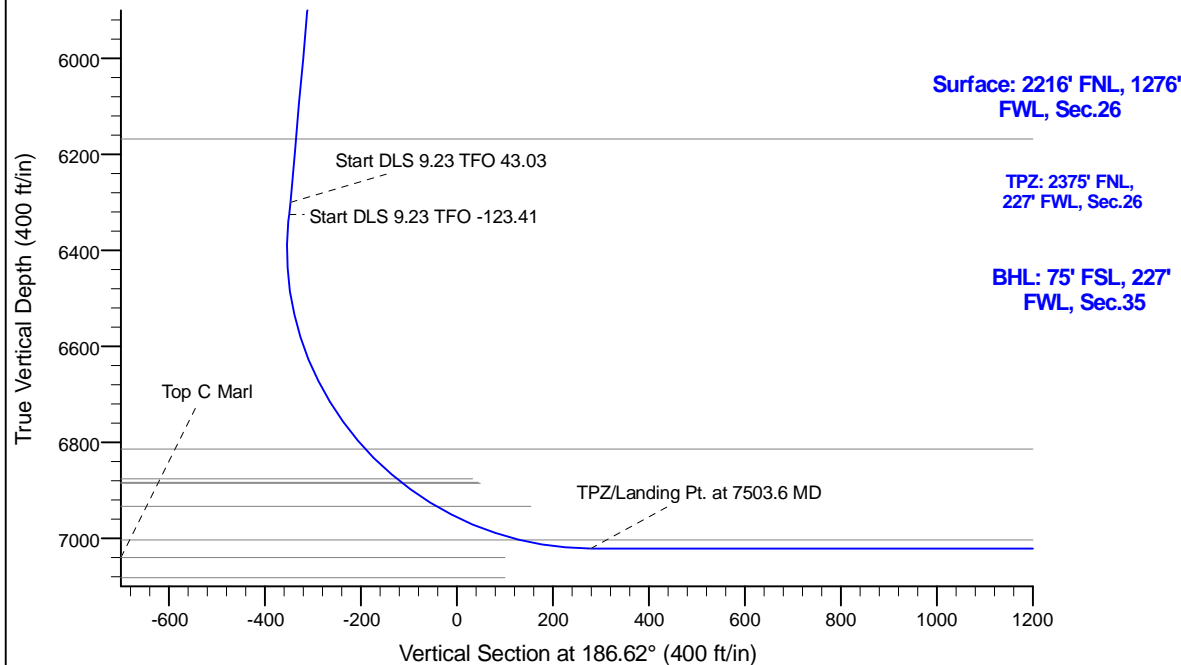
Project: Conceptual Wells
 Site: DP 408
 Well: Hurley H35-787
 Wellbore: Wellbore #1
 Design: Prelim - Rev 2

Northern Region Drilling - DJ Basin

Geodetic System: US State Plane 1983
 Datum: North American Datum 1983
 Ellipsoid: GRS 1980
 Zone: Colorado Northern Zone
 System Datum: Mean Sea Level

SECTION DETAILS

Sec	MD	Inc	Azi	TVD	+N/-S	+E/-W	Dleg	TFace	VSec	Target
1	0.0	0.00	0.00	0.0	0.0	0.0	0.00	0.00	0.0	
2	2000.0	0.00	0.00	2000.0	0.0	0.0	0.00	0.00	0.0	
3	2675.0	13.50	298.00	2668.8	37.2	-69.9	2.00	298.00	-28.9	
4	6409.4	13.50	298.00	6300.0	446.4	-839.6	0.00	0.00	-346.6	
5	6435.1	15.32	304.14	6324.9	449.8	-845.1	9.23	43.03	-349.3	
6	7503.6	90.00	179.77	7021.0	-165.0	-1000.0	9.23	-123.41	279.2	
7	15639.9	90.00	179.77	7021.0	-8301.2	-967.1	0.00	0.00	8357.4	Hurley H35-787 BHL



WELL DETAILS: Hurley H35-787

Ground Level:	4821.0	Longitude	
Northing	1315975.80	Easting	3241448.38
Latitude	40.197520		

Plan: Prelim - Rev 2 (Hurley H35-787/Wellbore #1)

Created By: Colby Baxter

Date: 11:46, October 24 2017

OK to submit with 2A as per Noble Drilling

10/24/2017