

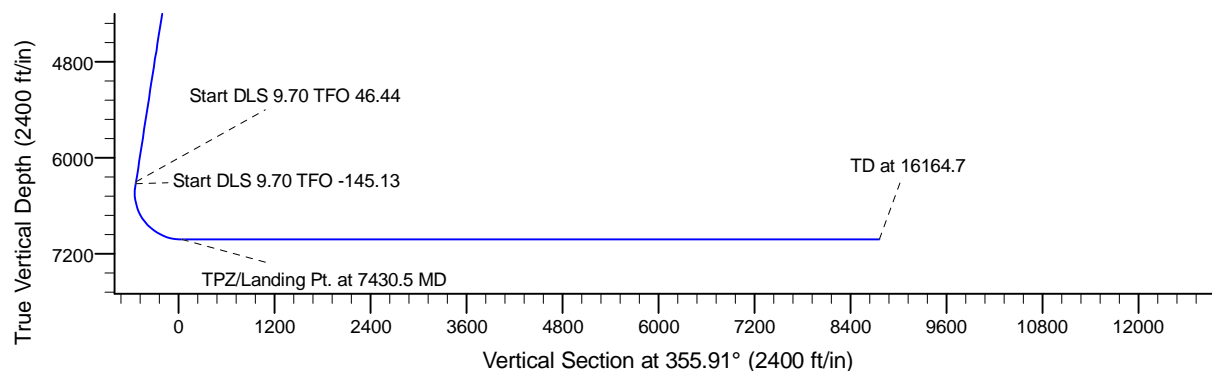
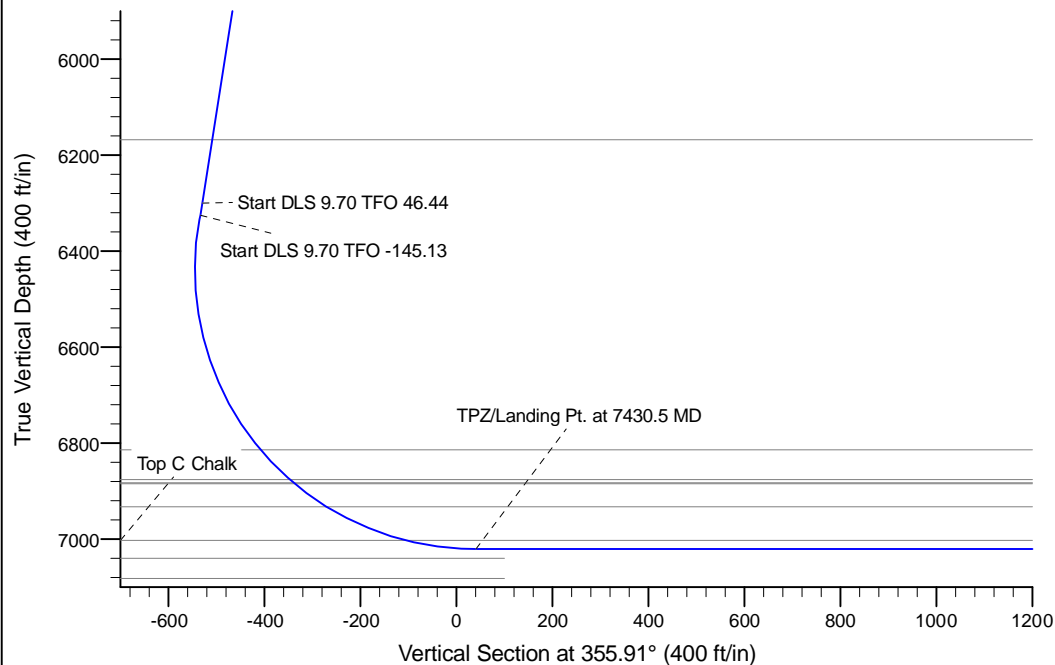
Project: Conceptual Wells  
 Site: DP 408  
 Well: Hurley H26-762  
 Wellbore: Wellbore #1  
 Design: Prelim - Rev 2

# Northern Region Drilling - DJ Basin

Geodetic System: US State Plane 1983  
 Datum: North American Datum 1983  
 Ellipsoid: GRS 1980  
 Zone: Colorado Northern Zone  
 System Datum: Mean Sea Level

## SECTION DETAILS

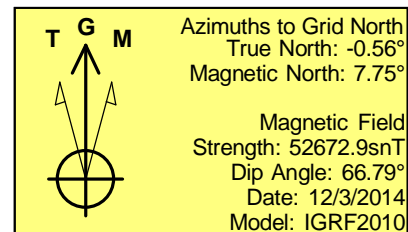
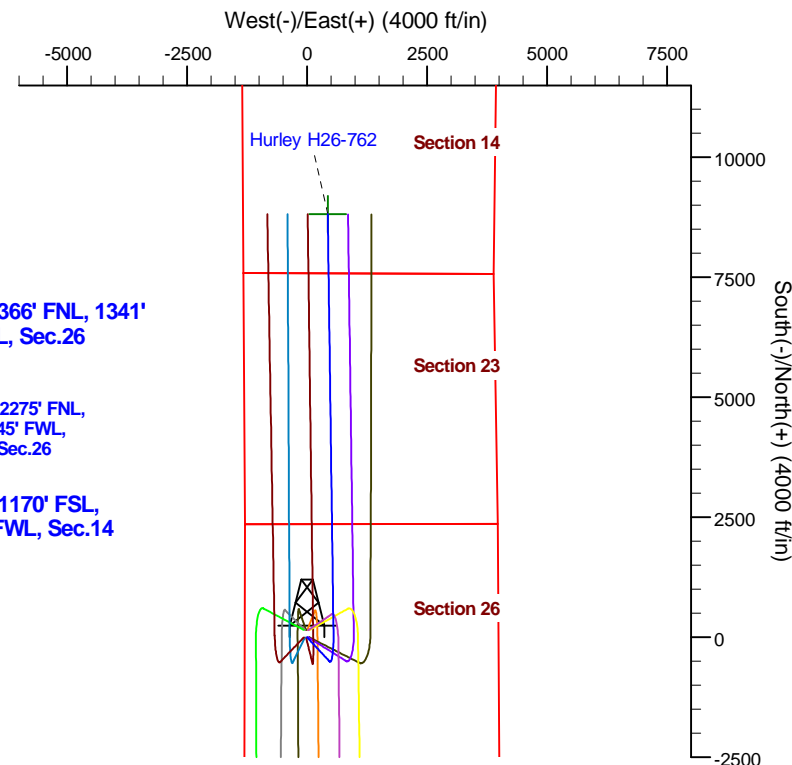
Sec	MD	Inc	Azi	TVD	+N/-S	+E/-W	Dleg	TFace	VSec	Target
1	0.0	0.00	0.00	0.0	0.0	0.0	0.00	0.00	0.0	
2	2600.0	0.00	0.00	2600.0	0.0	0.0	0.00	0.00	0.0	
3	3162.5	11.25	137.00	3158.9	-40.3	37.5	2.00	137.00	-42.8	
4	6365.1	11.25	137.00	6300.0	-497.2	463.7	0.00	0.00	-529.0	
5	6391.0	13.11	145.05	6325.3	-501.5	467.1	9.70	46.44	-533.5	
6	7430.5	90.00	359.21	7021.0	80.0	550.0	9.70	-145.13	40.6	
7	16164.7	90.00	359.22	7021.0	8813.4	430.7	0.00	90.00	8760.3	Hurley H26-762



Surface: 2366' FNL, 1341' FWL, Sec.26

TPZ: 2275' FNL, 1845' FWL, Sec.26

BHL: 1170' FSL, 1845' FWL, Sec.14



## WELL DETAILS: Hurley H26-762

North	Ground Level:	Latitude	Longitude
0.00.0	4821.0	40.197100	-104.635410
1315823.43	3241514.12		

Plan: Prelim - Rev 2 (Hurley H26-762/Wellbore #1)

Created By: Chad Stich

Date: 10:08, October 31 2017

**OK to submit with 2A as per Noble Drilling**

**10/31/2017**