



Lat40°, Inc. 6250 W. 10th Street, Unit 2, Greeley, CO 970-515-5294

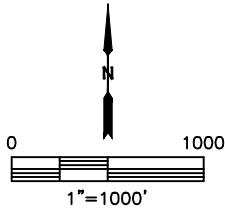
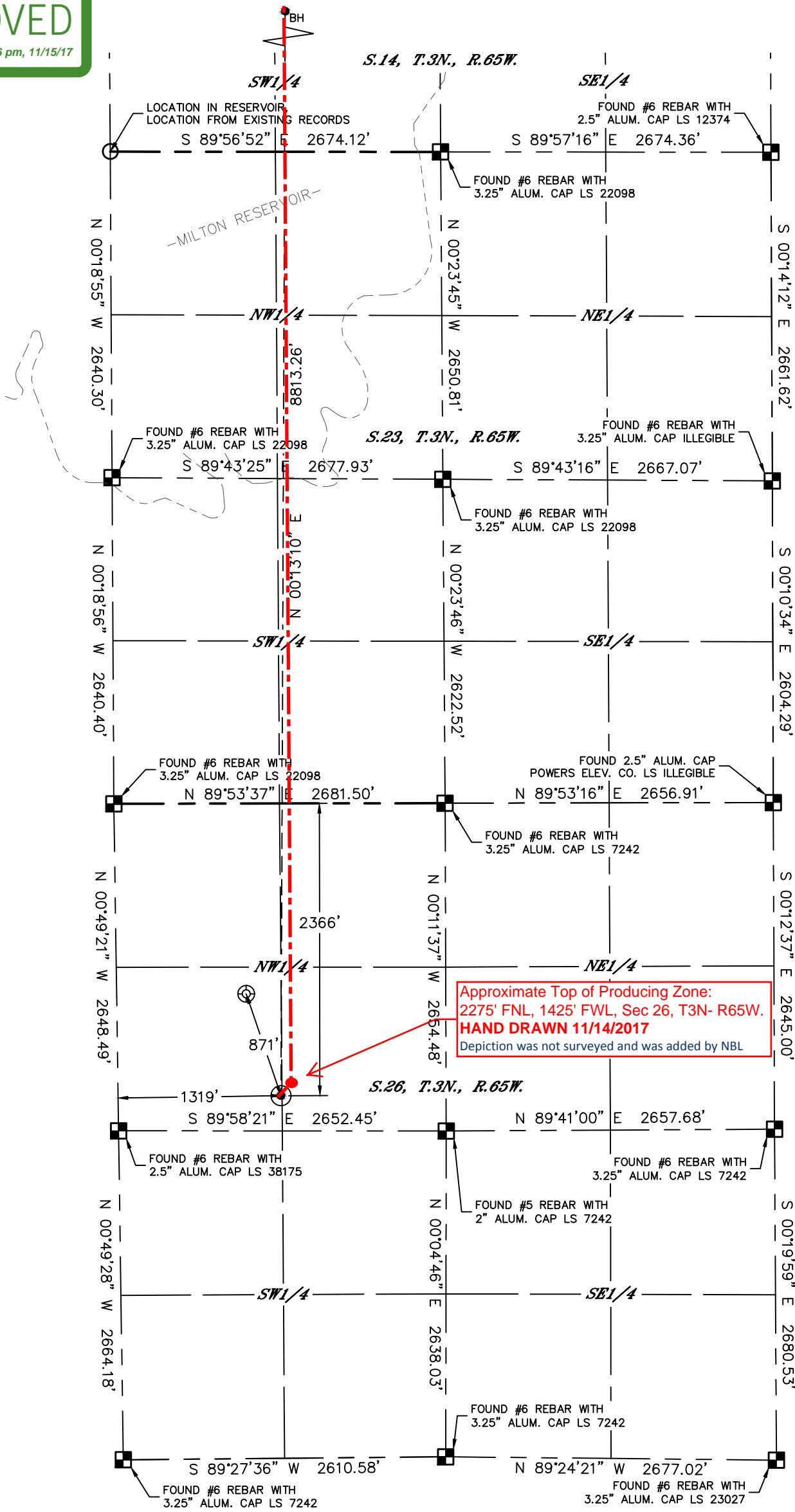
# WELL LOCATION CERTIFICATE

HURLEY H26-768

SECTION: 26  
TOWNSHIP: 3N  
RANGE: 65W  
6TH. P.M.  
WELD COUNTY, CO

APPROVED

By sethgordon at 2:16 pm, 11/15/17



|                                    |     |      |     |          |                        |     |      |      |         |
|------------------------------------|-----|------|-----|----------|------------------------|-----|------|------|---------|
| CLIENT: NOBLE ENERGY, INC.         |     |      |     |          | LANDMAN: TYLER BEAVERS |     |      |      |         |
| INSTRUMENT OPERATOR: SCOTT SHERARD |     |      |     |          | SURVEY DATE: 4/3/2017  |     |      |      |         |
| SHL FOOTAGE                        |     |      |     |          | SURFACE USE: CROP LAND |     |      |      |         |
| 2366                               | FNL | 1319 | FWL | 40.19710 | -104.63549             | 1.8 | 4822 | SWNW | 26-3-65 |

|             |     |      |     |          |            |           |
|-------------|-----|------|-----|----------|------------|-----------|
| BHL FOOTAGE |     |      |     | BHL LAT° | BHL LONG°  | BHL S-T-R |
| 1170        | FSL | 1425 | FWL | 40.22129 | -104.63506 | 14-3-65   |

NOTE:  
1) Bearings shown are Grid Bearings of the Colorado State Plane Coordinate System, North Zone, North American Datum 1983. The lineal dimensions as contained herein are based upon the "U.S. Survey Foot."  
2) Distances to section lines measured at 90 degrees from said section lines.  
3) Ground elevations are based on an observed GPS elevation (NAVD 1988 DATUM).  
4) Latitude and Longitude shown are (NAD 83 DATUM).  
5) IMPROVEMENTS: See LOCATION DRAWING for all visible improvements within 500' of oil and gas location.  
6) This map does not represent a boundary survey.

- LEGEND
- = ALIQUOT MONUMENT AS DESCRIBED
  - = CALCULATED POSITION
  - = SURFACE HOLE LOCATION (SHL)
  - ▲ = ENTRY POINT LOCATION (EP)
  - <sub>BH</sub> = BOTTOM HOLE LOCATION (BHL)
  - ⊙ = EXISTING WELL
  - ⊙ = ABANDONED WELL



SHEET 1 OF 2  
Kyle E. Rutz—On behalf of Lat40°, Inc.  
Colorado Licensed Professional Land Surveyor No. 38307  
DATE: 9/1/2017  
PROJECT#: 2017022

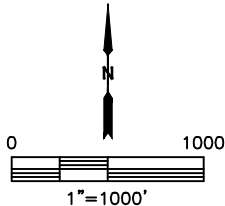
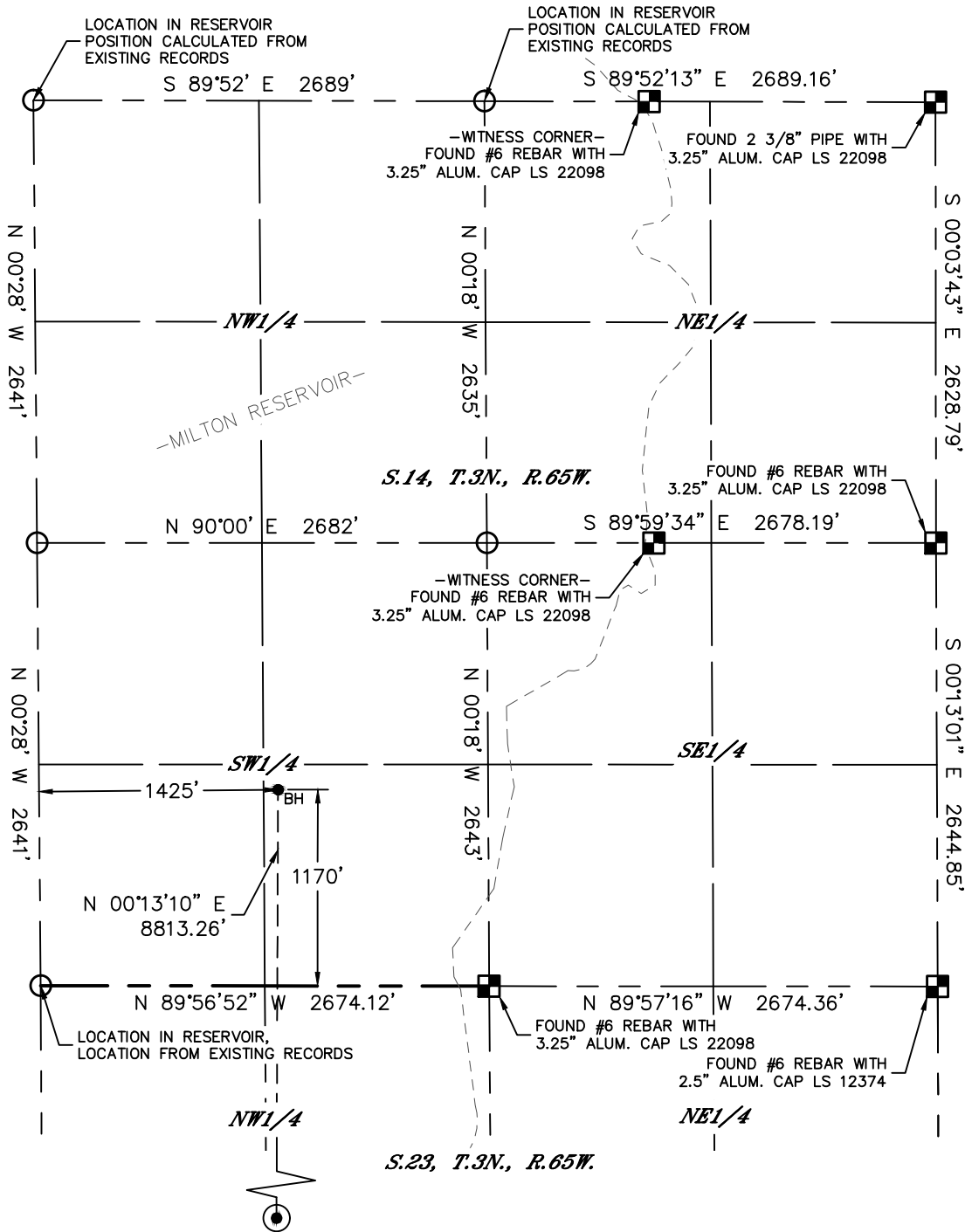


Lat40°, Inc. 6250 W. 10th Street, Unit 2, Greeley, CO 970-515-5294

WELL LOCATION CERTIFICATE

HURLEY H26-768

SECTION: 26  
TOWNSHIP: 3N  
RANGE: 65W  
6TH. P.M.  
WELD COUNTY, CO



LEGEND

- = ALIQUOT MONUMENT AS DESCRIBED
- = CALCULATED POSITION
- = SURFACE HOLE LOCATION (SHL)
- ▲ = ENTRY POINT LOCATION (EP)
- BH = BOTTOM HOLE LOCATION (BHL)
- ⊕ = EXISTING WELL
- ⊖ = ABANDONED WELL

NOTE:

- 1) Bearings shown are Grid Bearings of the Colorado State Plane Coordinate System, North Zone, North American Datum 1983. The lineal dimensions as contained herein are based upon the "U.S. Survey Foot."
- 2) Distances to section lines measured at 90 degrees from said section lines.
- 3) Ground elevations are based on an observed GPS elevation (NAVD 1988 DATUM).
- 4) Latitude and Longitude shown are (NAD 83 DATUM).
- 5) IMPROVEMENTS: See LOCATION DRAWING for all visible improvements within 500' of oil and gas location.
- 6) This map does not represent a boundary survey.



SHEET 2 OF 2

Kyle E. Rutz-On  
Colorado License  
Land Surveyor N