

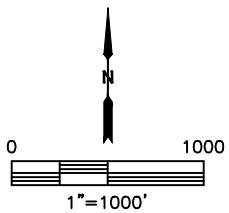
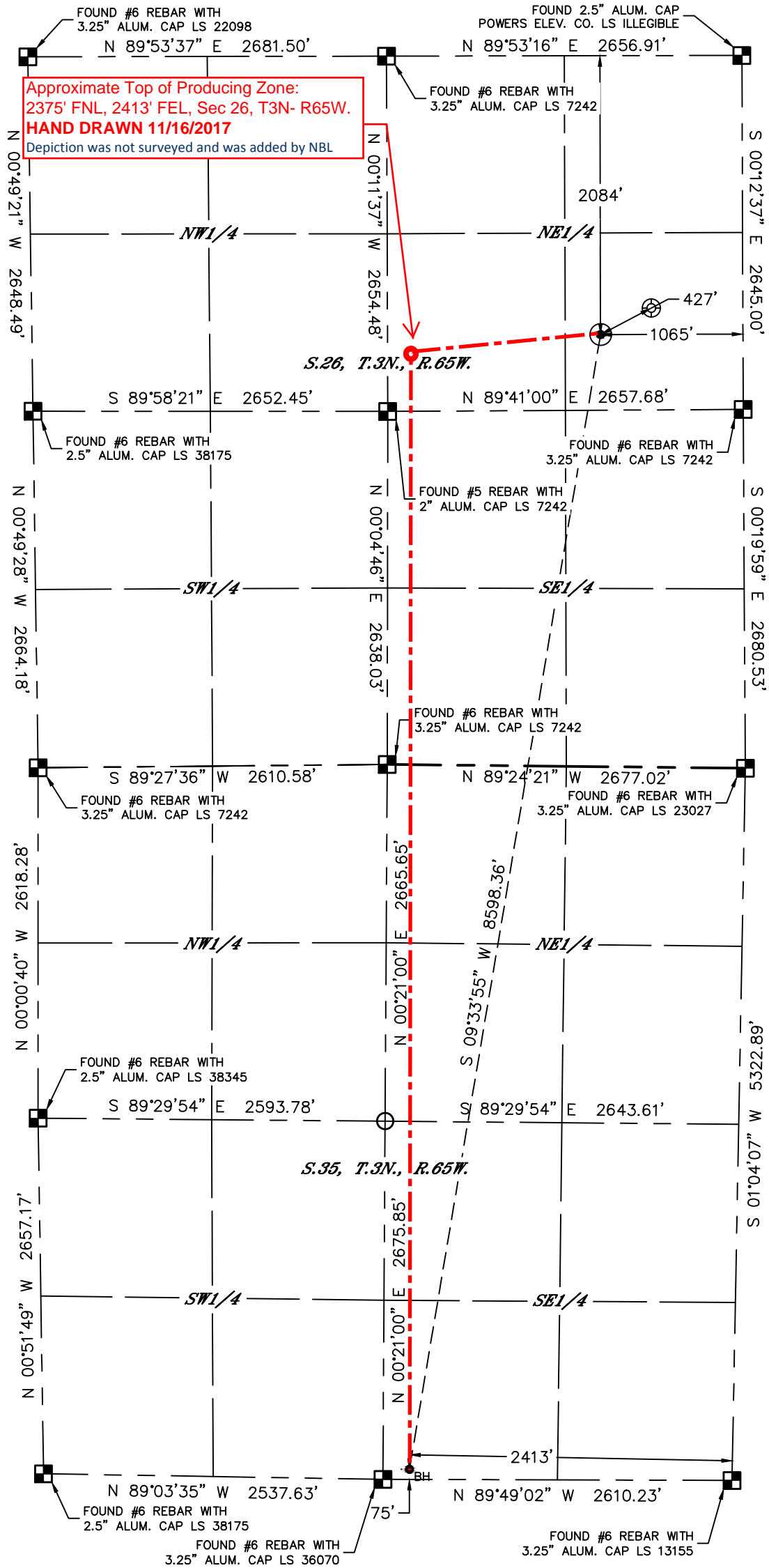
WELL LOCATION CERTIFICATE

HURLEY H35-746

SECTION: 26  
TOWNSHIP: 3N  
RANGE: 65W  
6TH. P.M.  
WELD COUNTY, CO

APPROVED

By sethgordon at 2:50 pm, 11/15/17



- LEGEND
- = ALIQUOT MONUMENT AS DESCRIBED
  - = CALCULATED POSITION
  - ⊙ = SURFACE HOLE LOCATION (SHL)
  - ▲ = ENTRY POINT LOCATION (EP)
  - <sub>BH</sub> = BOTTOM HOLE LOCATION (BHL)
  - ⊙ = EXISTING WELL
  - ⊙ = ABANDONED WELL

CLIENT: NOBLE ENERGY, INC.				LANDMAN: TYLER BEAVERS			
INSTRUMENT OPERATOR: SCOTT SHERARD				SURVEY DATE: 4/3/2017		SURFACE USE: RANGELAND	
SHL FOOTAGE	SHL LAT°	SHL LONG°	SHL PDOP	SHL ELEV (FT.)	SHL 1/4/1/4	SHL S-T-R	
2084	FNL	1065	FEL	40.19781	-104.62500	1.9 4854 SENE 26-3-65	

BHL FOOTAGE	BHL LAT°	BHL LONG°	BHL S-T-R
75	FSL	2413	FEL 40.17459 -104.63041 35-3-65

- NOTE:
- 1) Bearings shown are Grid Bearings of the Colorado State Plane Coordinate System, North Zone, North American Datum 1983. The lineal dimensions as contained herein are based upon the "U.S. Survey Foot."
  - 2) Distances to section lines measured at 90 degrees from said section lines.
  - 3) Ground elevations are based on an observed GPS elevation (NAVD 1988 DATUM).
  - 4) Latitude and Longitude shown are (NAD 83 DATUM).
  - 5) IMPROVEMENTS: See LOCATION DRAWING for all visible improvements within 500' of oil and gas location.
  - 6) This map does not represent a boundary survey.



Kyle E. Rutz—On behalf of Lat40, Inc.  
Colorado Licensed Professional Land Surveyor No. 38307  
DATE: 9/1/2017  
PROJECT#: 2017022