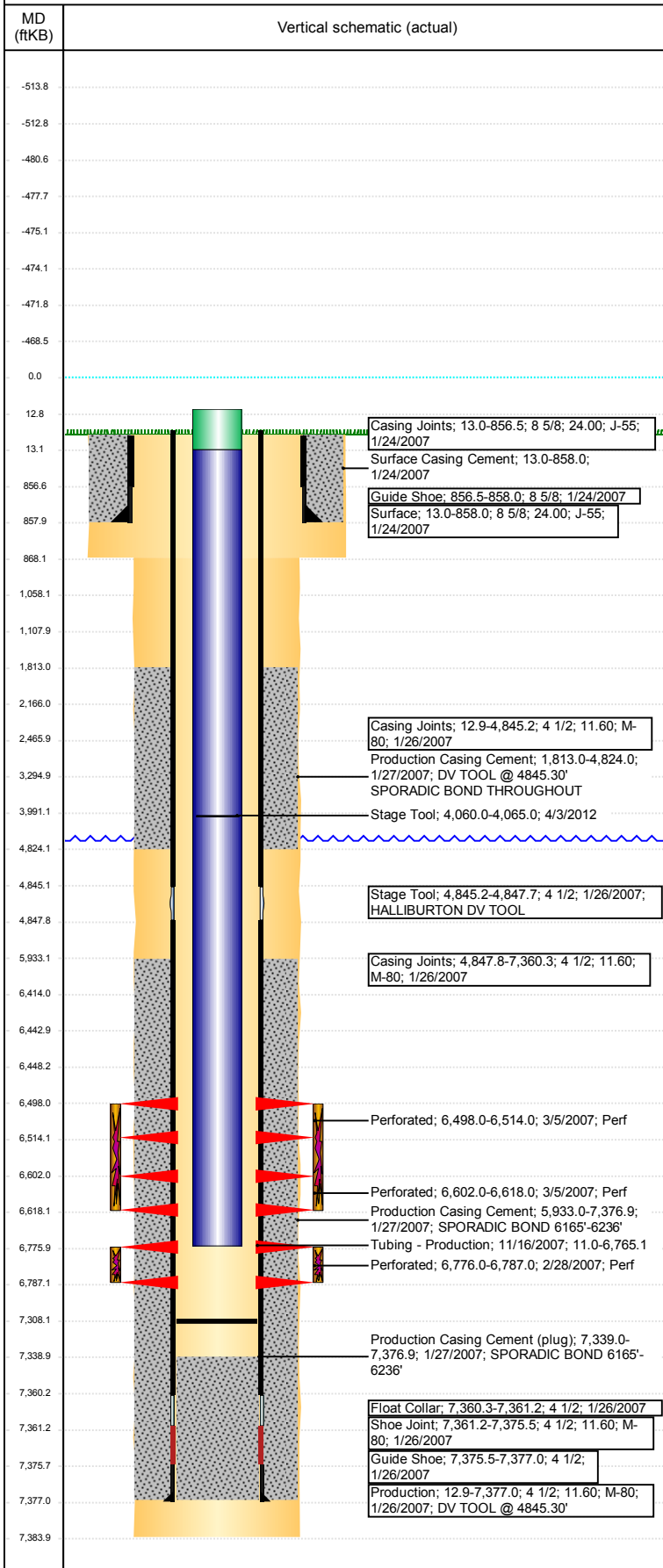


Wellbore Schematic Input Report

Well Name: LARSON USX AA19-05

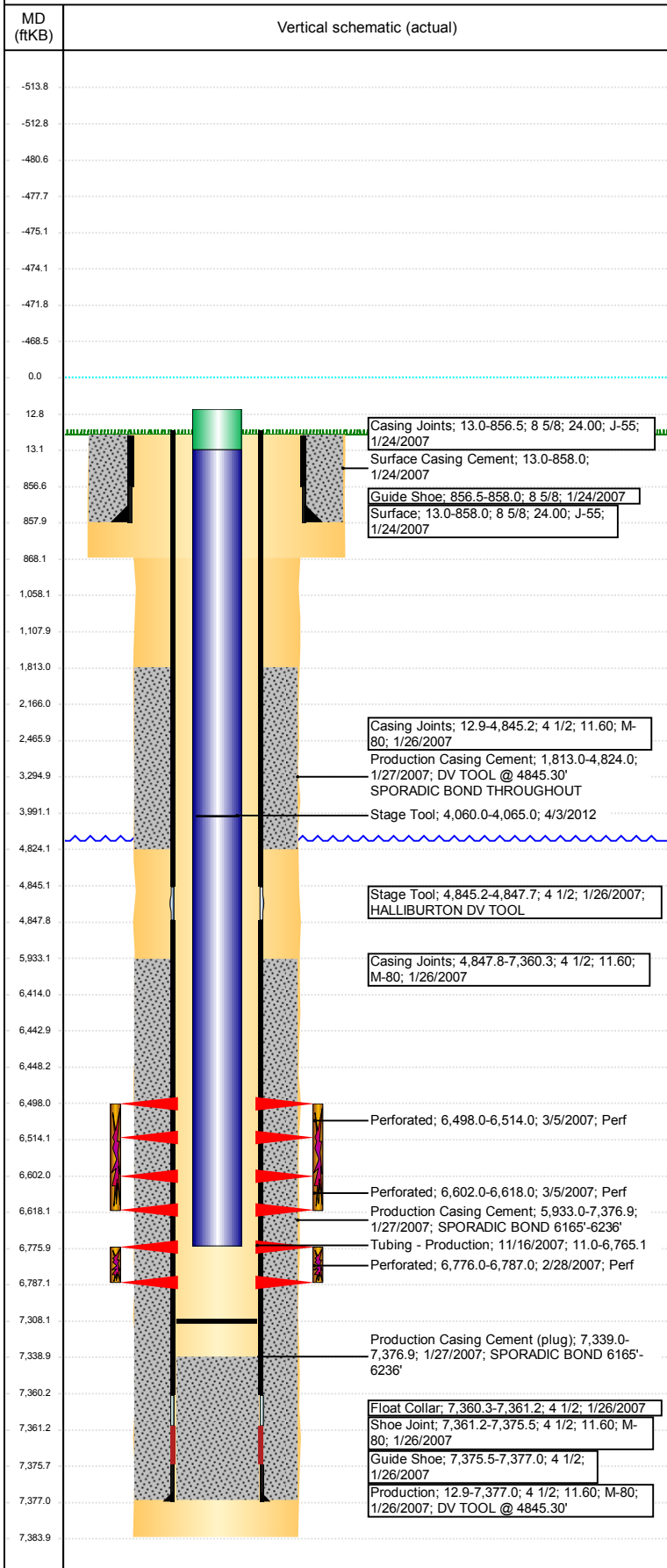
VERTICAL - ORIGINAL HOLE, 2/17/2018 8:54:37 AM



Well Header							
API 05-123-24331		Well Report Center 424423426		Well Configuration Type VERTICAL			
Original KB Elevation (ft) 4,662		KB - GL / MSL (ftKB) 13.00		Spud Date 1/23/2007		P & A Date	
Production Route Watt - B3-03			Well Production Status PR				SoRT Ignore No
Directions To Well RDS 61 & 68, 3/10 S, E INTO				Actual Latitude (°) 40.47337121		Actual Longitude (°) -104.48676036	
Comment DV TOOL @ 4845.30'							
Congressional Location							
Quarter 3 SW	Quarter 4 NW	Section 19	Township 6	Twntshp N/S Dir N	Range 63	Range E/W Dir W	
Rig Operator							
Rig Operator							
Plug Back Total Depths							
Date	Depth (ftKB)	Method		Com			
11/16/2007	7,308.0	TAG		DRILL PLUG AND PUSH TO 7308'			
Wellbore Sections							
Section Des		Size (in)		Act Top, MD (ftKB)		Act Btm, MD (ftKB)	
SURFACE		12 1/4		13		868	
PRODUCTION		7 7/8		868		7,384	
Zone Statuses							
Zone Name		Status Date			Status		
NIOBRARA		3/7/2007			PR		
CODELL		3/7/2007			PR		
Casing Strings							
Surface, 858.0ftKB							
Casing Description	Run Date	OD (in)	Wt/Len (l...	Grade	Top, MD (ft...	MD (ftKB)	
Surface	1/24/2007	8 5/8	24.00	J-55	13.0	858.0	
Production, 7,377.0ftKB							
Casing Description	Run Date	OD (in)	Wt/Len (l...	Grade	Top, MD (ft...	MD (ftKB)	
Production	1/26/2007	4 1/2	11.60	M-80	13.0	7,377.0	
Cement							
Des			Start Date		Top (ftKB)		Btm (ftKB)
Surface Casing Cement			1/24/2007		13.0		858.0
Production Casing Cement			1/27/2007		1,813.0		4,824.0
Production Casing Cement			1/27/2007		5,933.0		7,377.0
Proposed Cement							
Des					Top (ftKB)		Btm (ftKB)
Dump Bail					6,414.0		6,443.0
Balance Plug					3,295.0		3,991.0
Balance Plug					2,166.0		2,466.0
Shoe Plug					13.0		1,058.0
Shoe Plug					1,058.0		1,108.0
Tubing Strings							
Tubing Description	Run Date	String...	ID (in)	Wt (lb/ft)	Grade	Len (ft)	Set De...
Tubing - Production	11/16/2007	2 3/8	2.00	4.70	J-55	6,754.10	
Tubing Components							
Item Des	OD (in)	Wt (lb/ft)	Grade	Jts	Len (ft)	Btm (ftKB)	Btm (TVD) (ftKB)
PUP JOINT	2 3/8			2	20.00	31.0	
Tubing	2 3/8	4.70	J-55	221	6,733.00	6,764.0	
SEATING NIPPLE	2 3/8			1	1.00	6,765.0	
BLADE BIT COLLAR	3 7/8			1	0.10	6,765.1	
Other In Hole							
Run Date	Des			OD (in)	Top (ftKB)	Btm (ftKB)	
Proposed Other In Hole							
Des				OD (in)	Top (ftKB)	Btm (ftKB)	
Cast Iron Bridge Plug				3.99	6,443.0	6,448.0	
Logs							
Date	Type				Top, MD (ftKB)	Btm, MD (ftKB)	
1/26/2007	COMPENSATED DENSITY				2,000.0	7,359.0	
1/26/2007	INDUCTION				858.0	7,379.0	

Well Name: LARSON USX AA19-05

VERTICAL - ORIGINAL HOLE, 2/17/2018 8:54:37 AM



Logs						
Date	Type	Top, MD (ftKB)	Btm, MD (ftKB)			
2/28/2007	CBL/CCL/GR	1,684.0	7,337.0			
10/20/2015	GYRO	0.0	6,700.0			
Perforation Data						
Linked Zone	Sum of Entered Shot Total	Top (ftKB)	Btm (ftKB)	Date		
NIORARA, ORIGINAL HOLE	64	6,498.00	6,514.00	3/5/2007		
NIORARA, ORIGINAL HOLE	64	6,602.00	6,618.00	3/5/2007		
CODELL, ORIGINAL HOLE	44	6,776.00	6,787.00	2/28/2007		
Total (Sum)	172					
Job Supply Amounts						
Supply Item Des	Type	Uni...	Job Category	Total ...	Total ...	Total ...