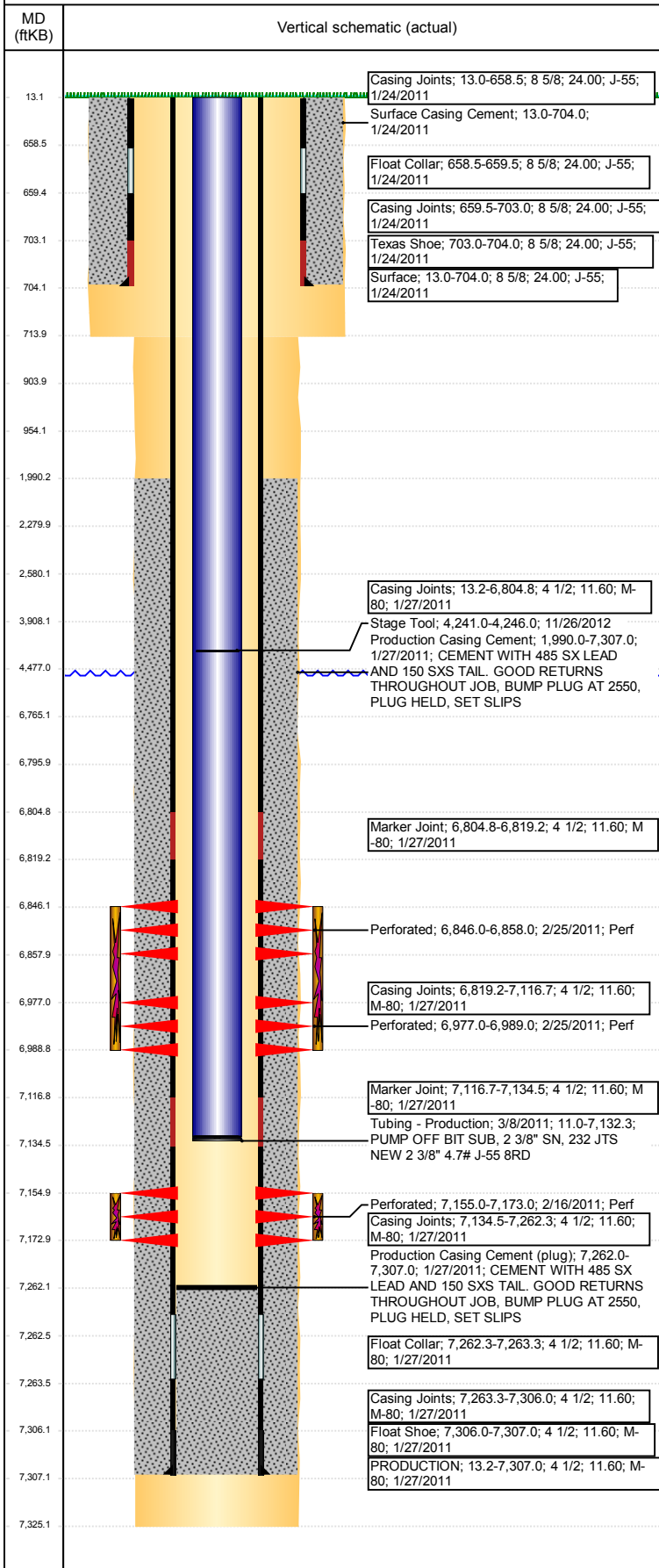


Well Name: LINDBLAD 17-34

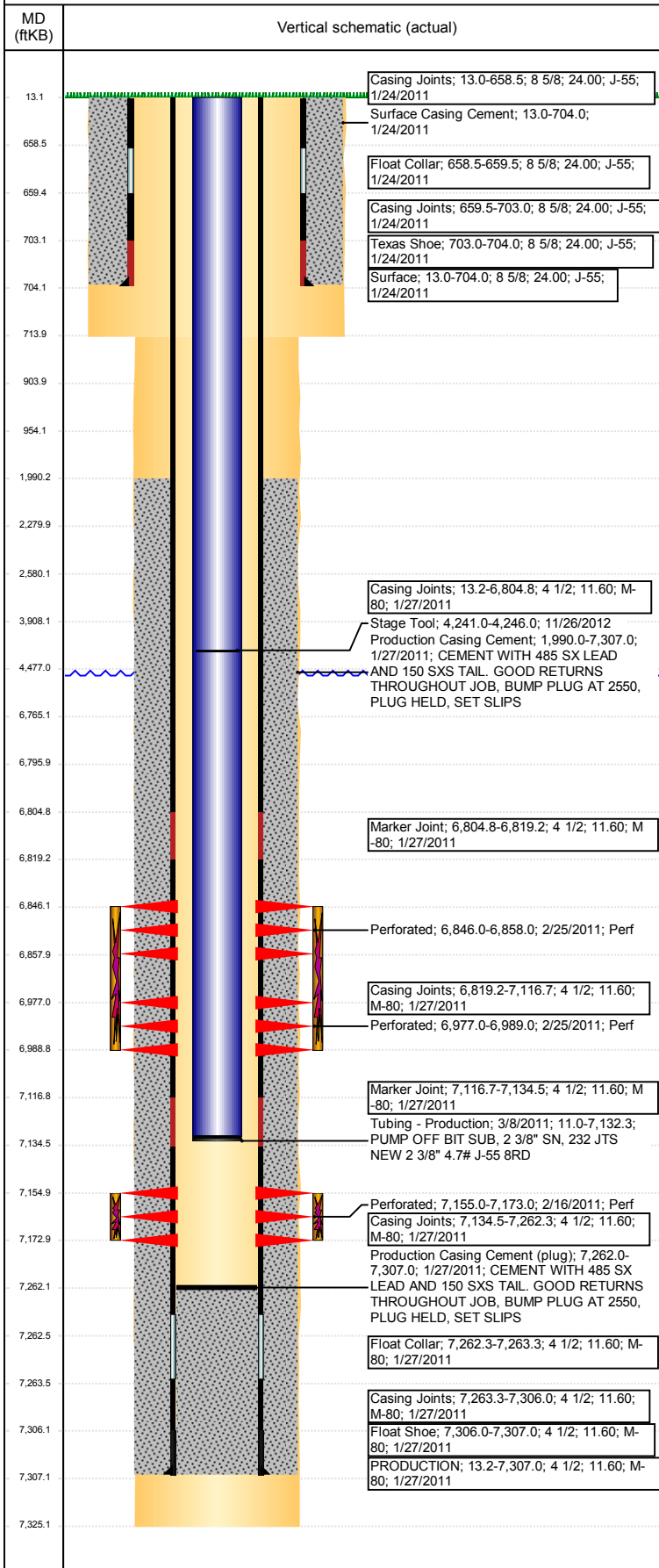
VERTICAL - ORIGINAL HOLE, 2/17/2018 8:57:01 AM



Well Header							
API 05-123-23815		Well Report Center 425773731		Well Configuration Type VERTICAL			
Original KB Elevation (ft) 4,776		KB - GL / MSL (ftKB) 13.00		Spud Date 1/23/2011		P & A Date	
Production Route Watt - A2-10			Well Production Status PR			SoRT Ignore No	
Directions To Well WCR 27 AND HWY 392, GO EAST 4/10THS OF A MILE, NORTH2/10THS, THEN NORTHWEST 1/10TH INTO LOCATION				Actual Latitude (°) 40.48276903		Actual Longitude (°) -104.80433525	
Comment							
Congressional Location							
Quarter 3 SE	Quarter 4 SW	Section 17	Township 6	Twntshp N/S Dir N	Range 66	Range E/W Dir W	
Rig Operator							
Rig Operator							
Plug Back Total Depths							
Date	Depth (ftKB)	Method		Com			
3/8/2011	7,262.0	TAG		DRILL PLUG AND CLEAN OUT TO 7262'			
Wellbore Sections							
Section Des		Size (in)		Act Top, MD (ftKB)		Act Btm, MD (ftKB)	
SURFACE		12 1/4		13		714	
PRODUCTION		7 7/8		714		7,325	
Zone Statuses							
Zone Name		Status Date		Status			
CODELL		4/5/2011		PR			
NIOBRARA		4/5/2011		PR			
Casing Strings							
Surface, 704.0ftKB							
Casing Description	Run Date	OD (in)	Wt/Len (l...	Grade	Top, MD (ft...	MD (ftKB)	
Surface	1/24/2011	8 5/8	24.00	J-55	13.0	704.0	
PRODUCTION, 7,307.0ftKB							
Casing Description	Run Date	OD (in)	Wt/Len (l...	Grade	Top, MD (ft...	MD (ftKB)	
PRODUCTION	1/27/2011	4 1/2	11.60	M-80	13.2	7,307.0	
Cement							
Des		Start Date		Top (ftKB)		Btm (ftKB)	
Surface Casing Cement		1/24/2011		13.0		704.0	
Production Casing Cement		1/27/2011		1,990.0		7,307.0	
Proposed Cement							
Des				Top (ftKB)		Btm (ftKB)	
Balance Plug				3,908.0		4,477.0	
Balance Plug				2,280.0		2,580.0	
Stub Plug				904.0		954.0	
Shoe Plug				13.0		904.0	
Tubing Strings							
Tubing Description	Run Date	String...	ID (in)	Wt (lb/ft)	Grade	Len (ft)	Set De...
Tubing - Production	3/8/2011	2 3/8	2.00	4.70	J-55	7,121.30	7,131.3
Tubing Components							
Item Des	OD (in)	Wt (lb/ft)	Grade	Jts	Len (ft)	Btm (ftKB)	Btm (TVD) (ftKB)
Tubing	2 3/8	4.70	J-55	232	7,119.50	7,130.5	7,129.5
Seating Nipple	2 3/8	5.40	J-55	1	1.20	7,131.7	7,130.7
Pump Off Bit Sub	2 3/8		J-55	1	0.60	7,132.3	7,131.3
Other In Hole							
Run Date	Des			OD (in)	Top (ftKB)	Btm (ftKB)	
Proposed Other In Hole							
Des			OD (in)	Top (ftKB)	Btm (ftKB)		
Cast Iron Bridge Plug w/ 2 SX Cement			4	6,765.0	6,796.0		
Logs							
Date	Type				Top, MD (ftKB)	Btm, MD (ftKB)	
1/26/2011	Caliper/Comp. Density/Neutron/GR/SP/ML				2,500.0	7,309.0	
1/26/2011	DIL/GR/SP/Caliper				704.0	7,329.0	
2/11/2011	CBL/CCL/GR				1,784.0	7,224.0	

Well Name: LINDBLAD 17-34

VERTICAL - ORIGINAL HOLE, 2/17/2018 8:57:02 AM



Perforation Data				
Linked Zone	Sum of Entered Shot Total	Top (ftKB)	Btm (ftKB)	Date
NIOBRARA, ORIGINAL HOLE	24	6,846.00	6,858.00	2/25/2011
NIOBRARA, ORIGINAL HOLE	24	6,977.00	6,989.00	2/25/2011
CODELL, ORIGINAL HOLE	72	7,155.00	7,173.00	2/16/2011
Total (Sum)	120			
Job Supply Amounts				
Supply Item Des	Type	Uni...	Job Category	Total... Total... Total...