

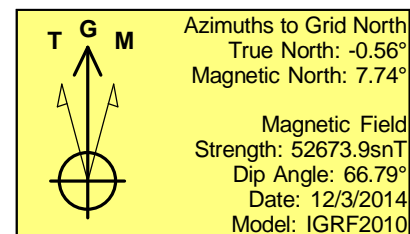
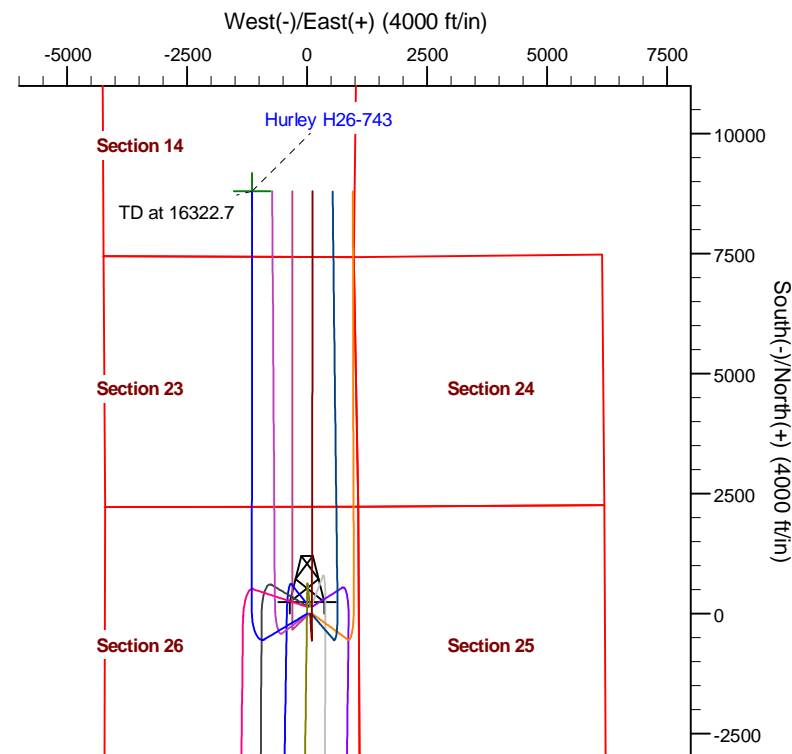
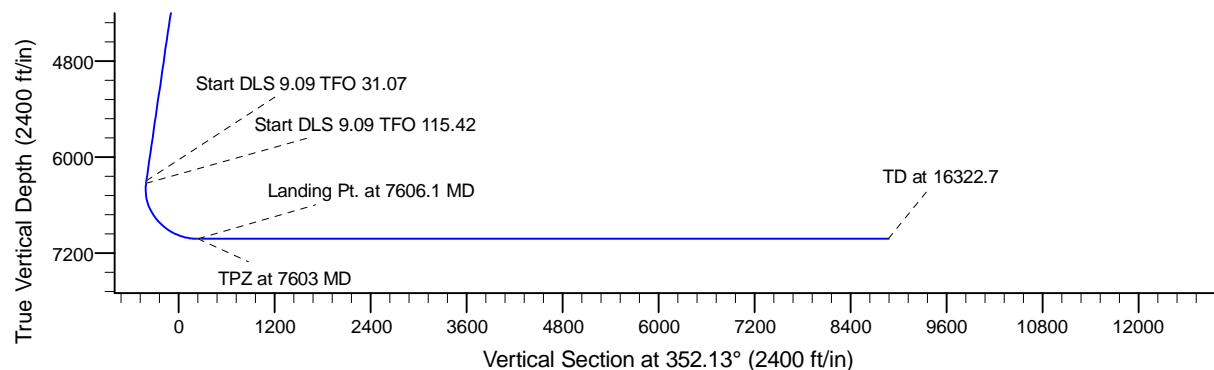
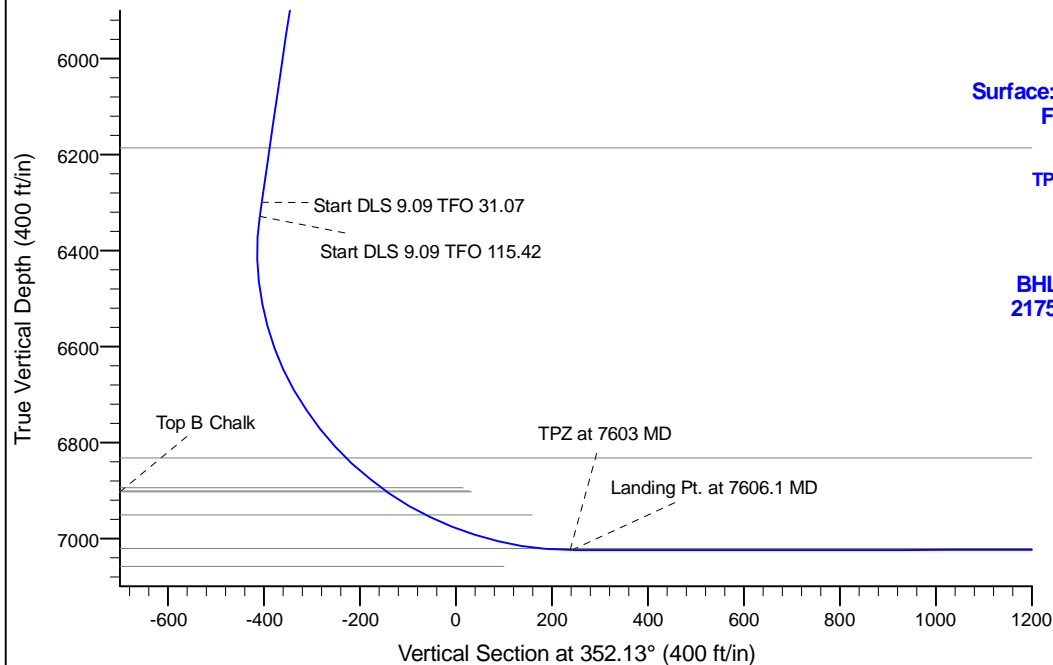
Project: Conceptual Wells
 Site: DP 408
 Well: Hurley H26-743
 Wellbore: Wellbore #1
 Design: Prelim - Rev 2

Northern Region Drilling - DJ Basin

Geodetic System: US State Plane 1983
 Datum: North American Datum 1983
 Ellipsoid: GRS 1980
 Zone: Colorado Northern Zone
 System Datum: Mean Sea Level

SECTION DETAILS

Sec	MD	Inc	Azi	TVD	+N/-S	+E/-W	Dleg	TFace	VSec	Target
1	0.0	0.00	0.00	0.0	0.0	0.0	0.00	0.00	0.0	
2	3000.0	0.00	0.00	3000.0	0.0	0.0	0.00	0.00	0.0	
3	4012.5	20.25	239.00	3991.6	-91.2	-151.8	2.00	239.00	-69.6	
4	6473.0	20.25	239.00	6300.0	-529.8	-881.8	0.00	0.00	-404.1	
5	6504.3	22.73	242.79	6329.1	-535.4	-891.8	9.09	31.07	-408.2	
6	7606.1	90.00	0.05	7024.0	85.0	-1150.0	9.09	115.42	241.7	
7	16322.7	90.00	0.05	7024.0	8801.6	-1142.5	0.00	0.00	8875.1	Hurley H26-743 BHL



WELL DETAILS: Hurley H26-743			
	Northing	Ground Level: 4854.0 Easting	Latitude Longitude
0.00.0	1315961.24	3244420.87	40.197400 -104.625000
Plan: Prelim - Rev 2 (Hurley H26-743/Wellbore #1)			
Created By: Chad Stich		Date: 15:45, October 31 2017	
<div>OK to submit with 2A as per Noble Drilling</div> <div>10/31/2017</div>			