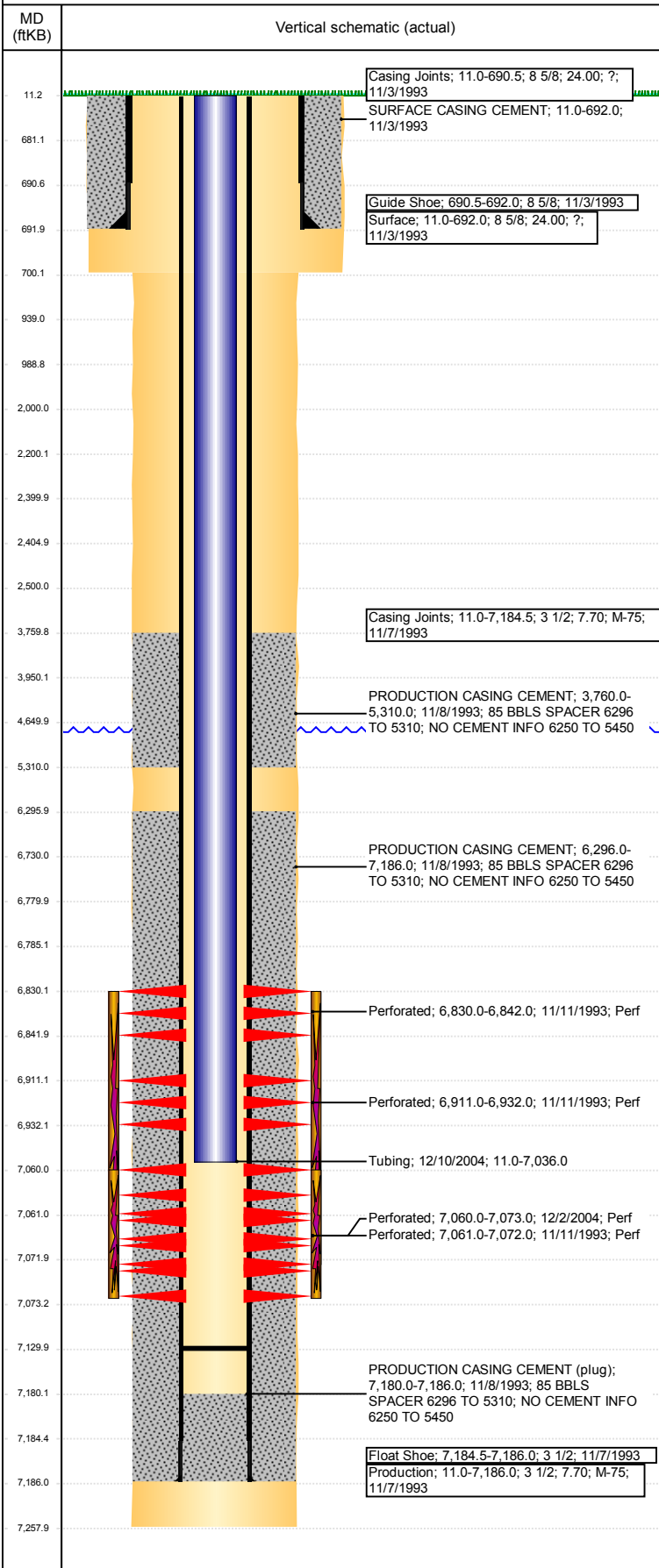


Well Name: HANSON D30-13

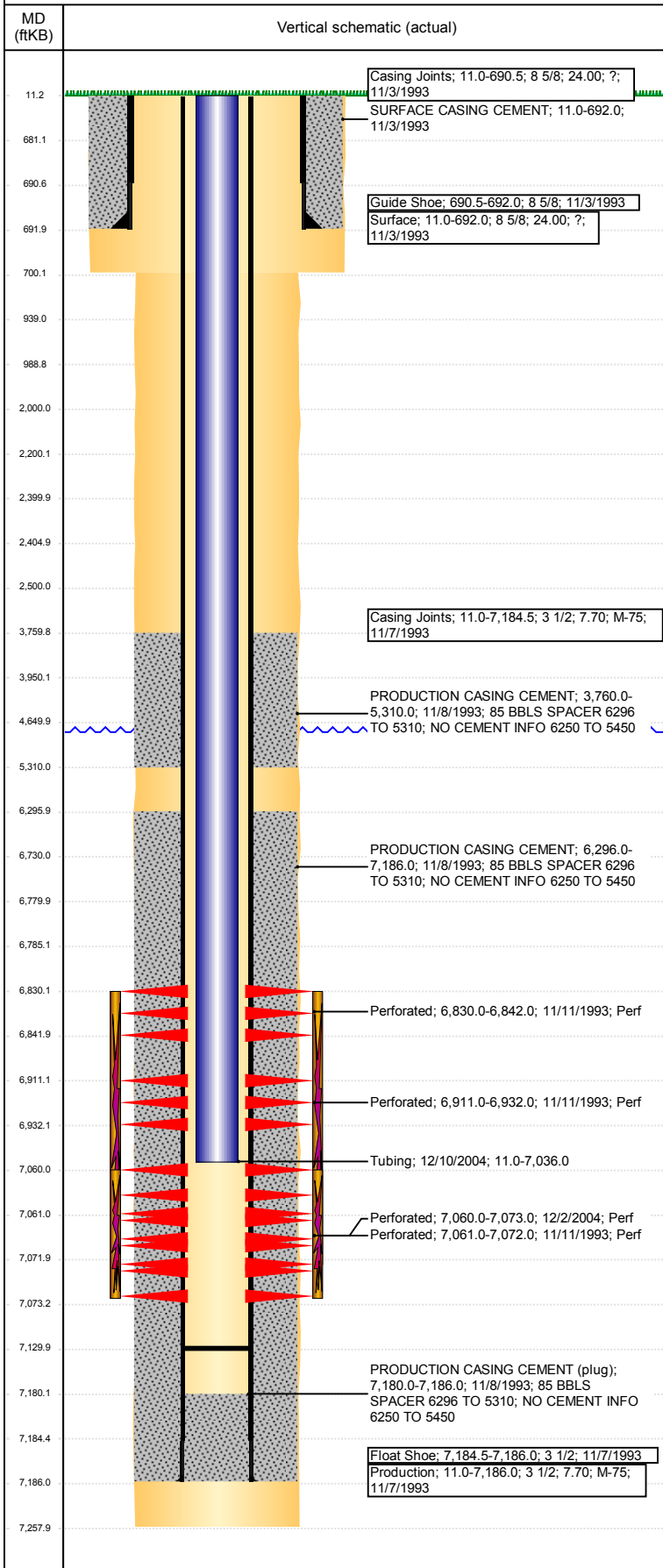
VERTICAL - ORIGINAL HOLE, 2/16/2018 10:32:51 AM



Well Header						
API 05-123-17421		Well Report Center 422129009		Well Configuration Type VERTICAL		
Original KB Elevation (ft) 4,809	KB - GL / MSL (ftKB) 11.00	Spud Date 11/2/1993		P & A Date		
Production Route C1-04			Well Production Status SI		SoRT Ignore No	
Directions To Well				Actual Latitude (°) 40.19060439	Actual Longitude (°) -104.60118020	
Comment DISCREPANCY: DR RPT TD/TD DATE 7257 11/7/1993; ST RPT TD/TD DATE 7258 11/8/1993						
Congressional Location						
Quarter 3 SW	Quarter 4 SW	Section 30	Township 3	Twnshp N/S Dir N	Range 64	Range E/W Dir W
Rig Operator						
Rig Operator						
Plug Back Total Depths						
Date 12/10/2004	Depth (ftKB) 7,130.0	Method TAG		Com TAGGED TO LAND TUBING		
Wellbore Sections						
Section Des		Size (in)	Act Top, MD (ftKB)		Act Btm, MD (ftKB)	
SURFACE		12 1/4	11		700	
PRODUCTION		7 7/8	700		7,258	
Zone Statuses						
Zone Name		Status Date		Status		
NIOBRARA-CODELL		2/16/2010		PR		
NIOBRARA		12/13/1993		PR		
CODELL		3/10/2017		SI		
Casing Strings						
Surface, 692.0ftKB						
Casing Description Surface	Run Date 11/3/1993	OD (in) 8 5/8	Wt/Len (l...) 24.00	Grade ?	Top, MD (ft...) 11.0	MD (ftKB) 692.0
Production, 7,186.0ftKB						
Casing Description Production	Run Date 11/7/1993	OD (in) 3 1/2	Wt/Len (l...) 7.70	Grade M-75	Top, MD (ft...) 11.0	MD (ftKB) 7,186.0
Cement						
Des		Start Date		Top (ftKB)	Btm (ftKB)	
SURFACE CASING CEMENT		11/3/1993		11.0	692.0	
PRODUCTION CASING CEMENT		11/8/1993		3,760.0	5,310.0	
PRODUCTION CASING CEMENT		11/8/1993		6,296.0	7,186.0	
Proposed Cement						
Des				Top (ftKB)	Btm (ftKB)	
Dump Bail				6,730.0	6,780.0	
Balance Plug				3,950.0	4,650.0	
Balance Plug				2,200.0	2,400.0	
Balance Plug				2,405.0	2,500.0	
Cement Squeeze				2,000.0	2,500.0	
Balance Plug				939.0	989.0	
Balance Plug				681.0	939.0	
Balance Plug				11.0	681.0	
Tubing Strings						
Tubing Description Tubing	Run Date 12/10/2004	String... 4	ID (in) 2 1/16	Wt (lb/ft) 1.75	Grade J-55	Len (ft) 7,025.00
Tubing Components						
Item Des	OD (in)	Wt (lb/ft)	Grade	Jts	Len (ft)	Btm (ftKB)
Tubing	2 1/16	3.25	J-55	218	7,025.00	7,036.0
Other In Hole						
Run Date	Des		OD (in)	Top (ftKB)	Btm (ftKB)	
Proposed Other In Hole						
Des		OD (in)	Top (ftKB)	Btm (ftKB)		
Cast Iron Bridge Plug		2.992	6,780.0	6,785.0		
Cement Retainer		2.992	2,400.0	2,405.0		

Well Name: HANSON D30-13

VERTICAL - ORIGINAL HOLE, 2/16/2018 10:32:51 AM



Logs			
Date	Type	Top, MD (ftKB)	Btm, MD (ftKB)
11/7/1993	COMPENSATED DENSITY	4,094.0	7,203.0
11/7/1993	INDUCTION	4,094.0	4,752.0
11/11/1993	CBL/CCL/GR	3,650.0	7,180.0
2/24/2011	GYRO	10.0	7,000.0

Perforation Data				
Linked Zone	Sum of Entered Shot Total	Top (ftKB)	Btm (ftKB)	Date
NIOBRARA, ORIGINAL HOLE	36	6,830.00	6,842.00	11/11/1993
NIOBRARA, ORIGINAL HOLE	63	6,911.00	6,932.00	11/11/1993
CODELL, ORIGINAL HOLE	52	7,060.00	7,073.00	12/2/2004
CODELL, ORIGINAL HOLE	88	7,061.00	7,072.00	11/11/1993
Total (Sum)	239			

Proposed Perforations				
Linked Zone	Sum of En...	Top Depth (ftKB)	Btm (ftKB)	Date
	0	2,500.00	2,500.00	1/23/2018
Total (Sum)	0			

Job Supply Amounts						
Supply Item Des	Type	Uni...	Job Category	Total...	Total...	Total...