

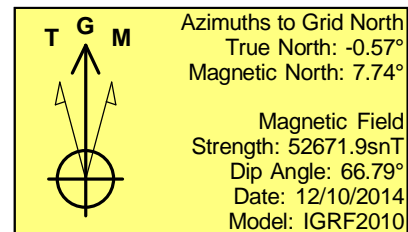
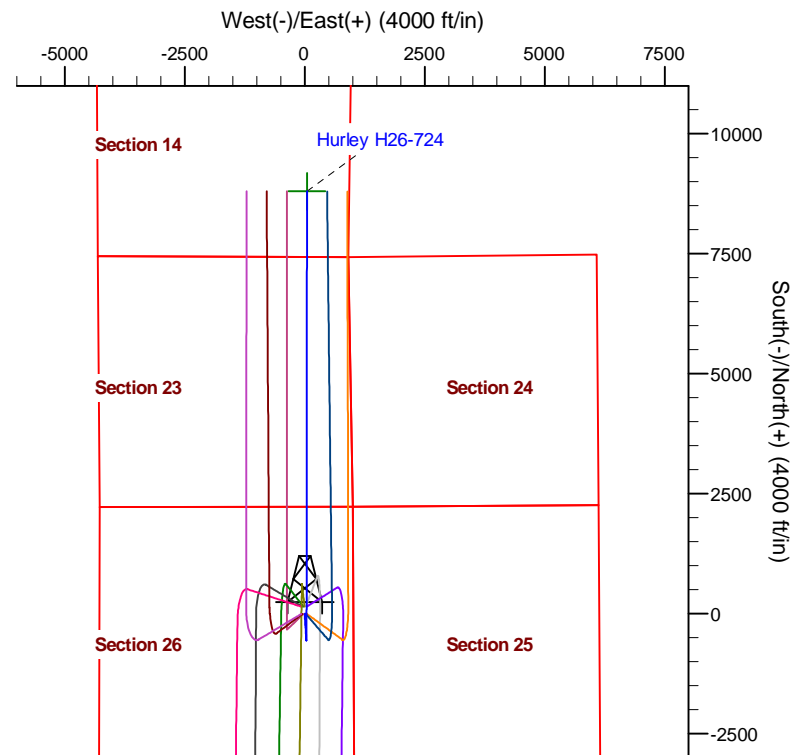
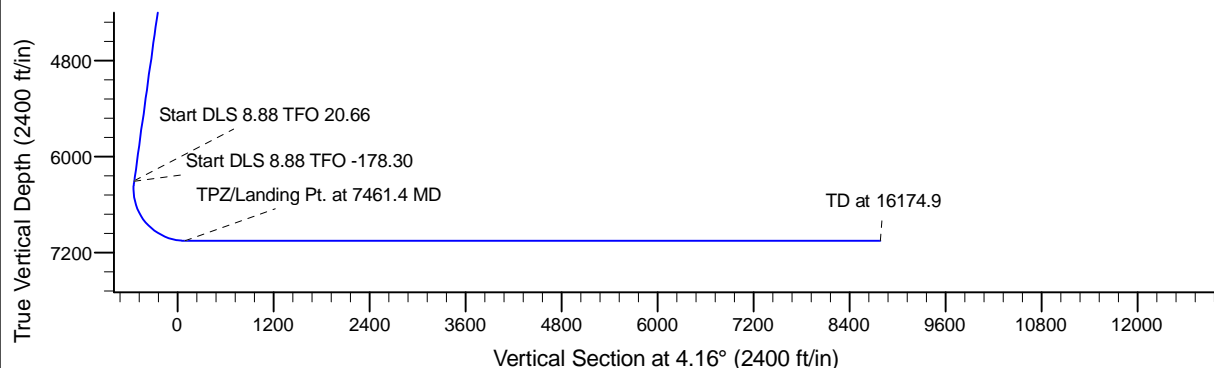
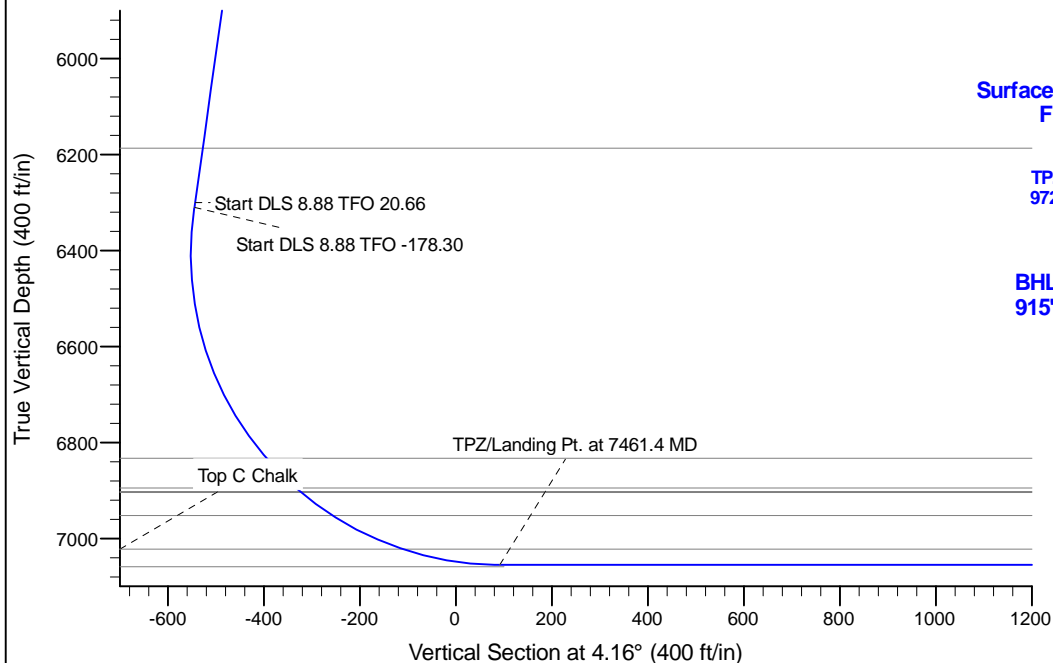
Project: Conceptual Wells  
 Site: DP 408  
 Well: Hurley H26-724  
 Wellbore: Wellbore #1  
 Design: Design #1

# Northern Region Drilling - DJ Basin

Geodetic System: US State Plane 1983  
 Datum: North American Datum 1983  
 Ellipsoid: GRS 1980  
 Zone: Colorado Northern Zone  
 System Datum: Mean Sea Level

## SECTION DETAILS

| Sec | MD      | Inc   | Azi    | TVD    | +N/-S  | +E/-W | Dleg | TFace   | VSect  | Target             |
|-----|---------|-------|--------|--------|--------|-------|------|---------|--------|--------------------|
| 1   | 0.0     | 0.00  | 0.00   | 0.0    | 0.0    | 0.0   | 0.00 | 0.00    | 0.0    |                    |
| 2   | 2200.0  | 0.00  | 0.00   | 2200.0 | 0.0    | 0.0   | 0.00 | 0.00    | 0.0    |                    |
| 3   | 2600.0  | 8.00  | 176.25 | 2598.7 | -27.8  | 1.8   | 2.00 | 176.25  | -27.6  |                    |
| 4   | 6337.7  | 8.00  | 176.25 | 6300.0 | -546.9 | 35.8  | 0.00 | 0.00    | -542.8 |                    |
| 5   | 6348.1  | 8.88  | 178.38 | 6310.4 | -548.4 | 35.9  | 8.88 | 20.66   | -544.4 |                    |
| 6   | 7461.4  | 90.00 | 0.06   | 7055.0 | 89.0   | 40.0  | 8.88 | -178.30 | 91.7   |                    |
| 7   | 16174.9 | 90.00 | 0.07   | 7055.0 | 8802.4 | 50.0  | 0.00 | 90.00   | 8782.9 | Hurley H26-724 BHL |



## WELL DETAILS: Hurley H26-724

| Ground Level: | 4855.0      |
|---------------|-------------|
| Northing      | 1315961.90  |
| Easting       | 3244487.91  |
| Latitude      | 40.197400   |
| Longitude     | -104.624760 |

Plan: Design #1 (Hurley H26-724/Wellbore #1)

Created By: Chad Stich

Date: 10:19, November 01 2017

**OK to submit with 2A as per Noble Drilling**

**11/1/2017**