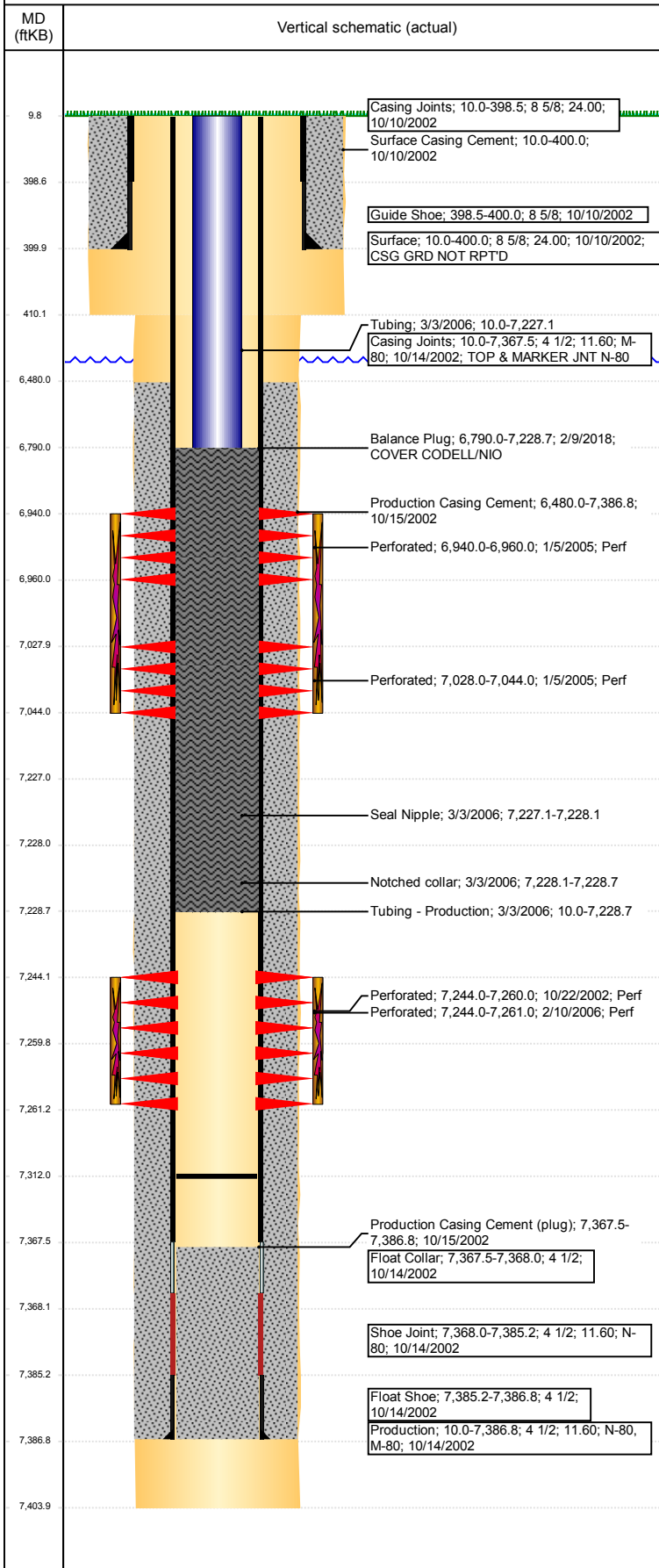


Wellbore Schematic Input Report

Well Name: WETCO K20-12

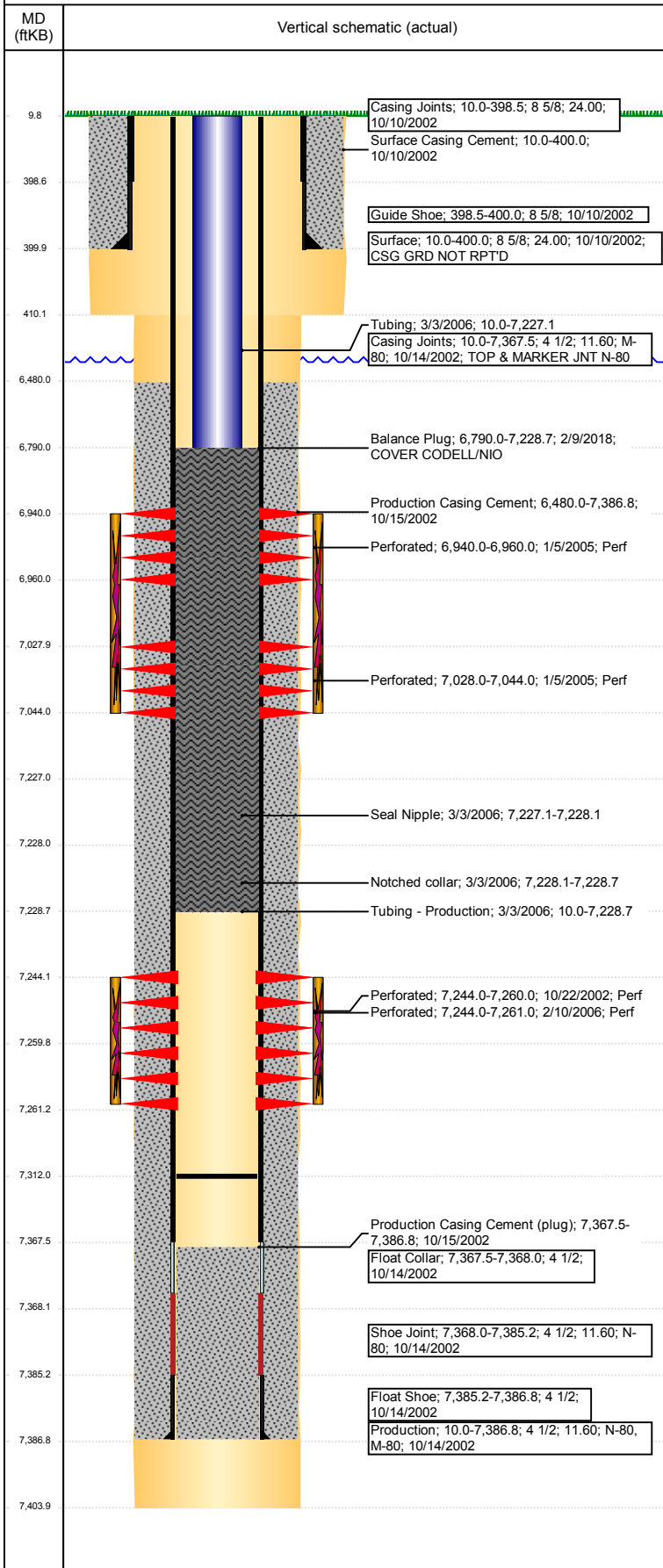
VERTICAL - ORIGINAL HOLE, 2/14/2018 4:58:12 PM



Well Header						
API 05-123-20744		Well Report Center 422123219		Well Configuration Type VERTICAL		
Original KB Elevation (ft) 4,760		KB - GL / MSL (ftKB) 10.00		Spud Date 10/10/2002		P & A Date
Production Route Watt - A1-02			Well Production Status TA			SoRT Ignore Yes
Directions To Well				Actual Latitude (°) 40.29534062		Actual Longitude (°) -104.80863523
Comment						
Congressional Location						
Quarter 3 NW	Quarter 4 SW	Section 20	Township 4	Twnshp N/S Dir N	Range 66	Range E/W Dir W
Rig Operator						
Rig Operator						
Plug Back Total Depths						
Date	Depth (ftKB)	Method		Com		
3/3/2006	7,312.0	TAG		CLEAN OUT		
Wellbore Sections						
Section Des		Size (in)		Act Top, MD (ftKB)		Act Btm, MD (ftKB)
SURFACE		12 1/4		10		410
PRODUCTION		7 7/8		410		7,404
Zone Statuses						
Zone Name		Status Date			Status	
NIOBRARA		2/9/2018			TA	
CODELL		2/9/2018			TA	
Casing Strings						
Surface, 400.0ftKB						
Casing Description Surface	Run Date 10/10/2002	OD (in) 8 5/8	Wt/Len (l... 24.00	Grade	Top, MD (ft... 10.0	MD (ftKB) 400.0
Production, 7,386.8ftKB						
Casing Description Production	Run Date 10/14/2002	OD (in) 4 1/2	Wt/Len (l... 11.60	Grade M-80	Top, MD (ft... 10.0	MD (ftKB) 7,386.8
Cement						
Des		Start Date		Top (ftKB)		Btm (ftKB)
Surface Casing Cement		10/10/2002		10.0		400.0
Production Casing Cement		10/15/2002		6,480.0		7,386.8
Balance Plug		2/9/2018		6,790.0		7,228.7
Proposed Cement						
Des				Top (ftKB)		Btm (ftKB)
Tubing Strings						
Tubing Description Tubing - Production	Run Date 3/3/2006	String... 2 3/8	ID (in) 2.00	Wt (lb/ft) 4.70	Grade J-55	Len (ft) 7,218.68
Set De...						
Tubing Components						
Item Des	OD (in)	Wt (lb/ft)	Grade	Jts	Len (ft)	Btm (ftKB)
Tubing	2 3/8	4.70	J-55	220	7,217.08	7,227.1
Seal Nipple	2 3/8				1.00	7,228.1
Notched collar	2 3/8				0.60	7,228.7
Other In Hole						
Run Date	Des			OD (in)	Top (ftKB)	Btm (ftKB)
Proposed Other In Hole						
Des			OD (in)	Top (ftKB)		Btm (ftKB)
Logs						
Date	Type				Top, MD (ftKB)	Btm, MD (ftKB)
10/14/2002	COMPENSATED DENSITY				4,100.0	7,384.0
10/14/2002	INDUCTION				400.0	7,404.0
10/22/2002	CBL/CCL/GR				6,340.0	7,352.0
Perforation Data						
Linked Zone	Sum of Entered Shot Total	Top (ftKB)	Btm (ftKB)		Date	
NIOBRARA, ORIGINAL HOLE	120	6,940.00	6,960.00		1/5/2005	

Well Name: WETCO K20-12

VERTICAL - ORIGINAL HOLE, 2/14/2018 4:58:12 PM



Perforation Data				
Linked Zone	Sum of Entered Shot Total	Top (ftKB)	Btm (ftKB)	Date
NIOBRARA, ORIGINAL HOLE	96	7,028.00	7,044.00	1/5/2005
CODELL, ORIGINAL HOLE	34	7,244.00	7,261.00	2/10/2006
CODELL, ORIGINAL HOLE	64	7,244.00	7,260.00	10/22/2002
Total (Sum)	314			
Job Supply Amounts				
Supply Item Des	Type	Uni...	Job Category	Total ... Total ... Total ...