

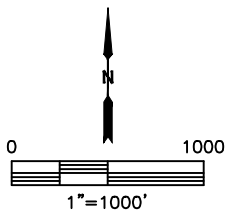
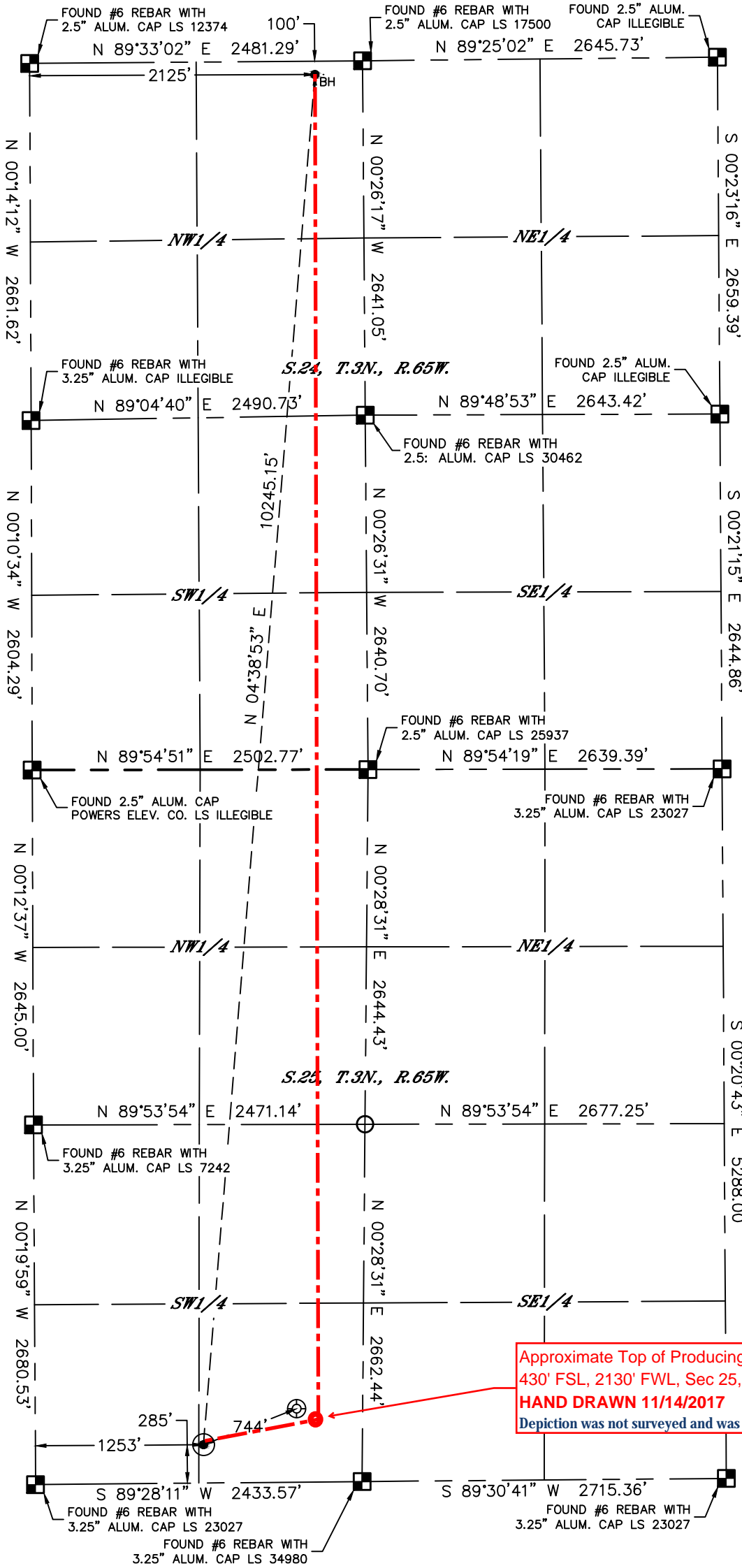


WELL LOCATION CERTIFICATE

EMMY STATE H25-757

SECTION: 25
TOWNSHIP: 3N
RANGE: 65W
6TH. P.M.
WELD COUNTY, CO

APPROVED
By hilarymckenna at 4:04 pm, 11/15/17



CLIENT: NOBLE ENERGY, INC.				LANDMAN: TYLER BEAVERS					
INSTRUMENT OPERATOR: SCOTT SHERARD				SURVEY DATE: 4/3/2017		SURFACE USE: RANGELAND			
SHL FOOTAGE	SHL LAT°	SHL LONG°	SHL PDOP	SHL ELEV (FT.)	SHL 1/4/1/4	SHL S-T-R			
285	FSL	1253	FWL	40.18967	-104.61675	1.6	4816	SESW	25-3-65

BHL FOOTAGE	BHL LAT°	BHL LONG°	BHL S-T-R			
100	FNL	2125	FWL	40.21767	-104.61342	24-3-65

- LEGEND
- = ALIQUOT MONUMENT AS DESCRIBED
 - = CALCULATED POSITION
 - ⊙ = SURFACE HOLE LOCATION (SHL)
 - ▲ = ENTRY POINT LOCATION (EP)
 - = BOTTOM HOLE LOCATION (BHL)
 - ⊕ = EXISTING WELL
 - ⊖ = ABANDONED WELL

NOTE:

- Bearings shown are Grid Bearings of the Colorado State Plane Coordinate System, North Zone, North American Datum 1983. The lineal dimensions as contained herein are based upon the "U.S. Survey Foot."
- Distances to section lines measured at 90 degrees from said section lines.
- Ground elevations are based on an observed GPS elevation (NAVD 1988 DATUM).
- Latitude and Longitude shown are (NAD 83 DATUM).
- IMPROVEMENTS: See LOCATION DRAWING for all visible improvements within 500' of oil and gas location.
- This map does not represent a boundary survey.



Kyle E. Rutz—On behalf of Lat40, Inc.
Colorado Licensed Professional Land Surveyor No. 38307
DATE: 9/1/2017
PROJECT#: 2017022