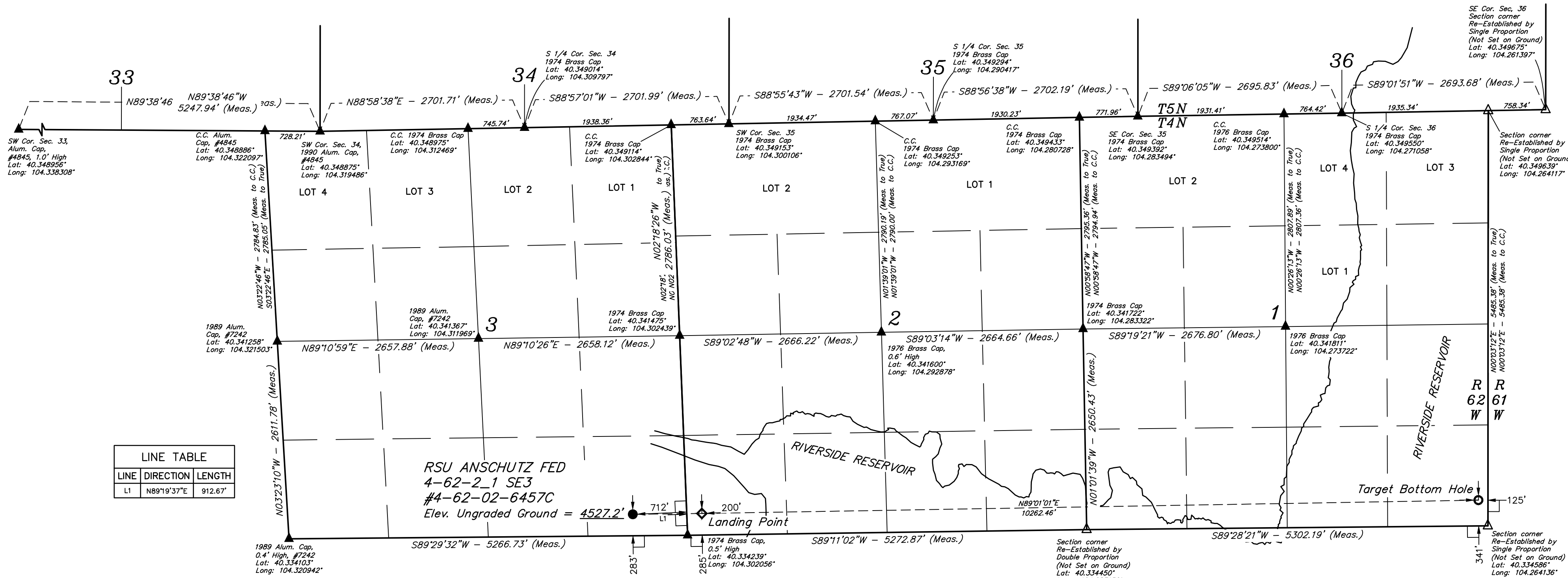
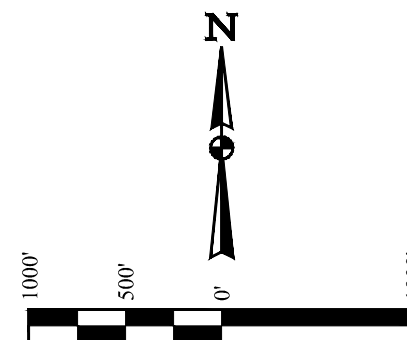


T4N, R62W, 6th P.M.

BILL BARRETT CORPORATION
RSU ANSCHUTZ FED 4-62-2_1 SE3 #4-62-02-6457C
SE 1/4 SE 1/4, SECTION 3, T4N, R62W, 6th P.M.
WELD COUNTY, COLORADO

BASIS OF BEARINGS
BASIS OF ELEVATION
SPOT ELEVATION LOCATED AT THE NORTHEAST CORNER OF SECTION 24, T5N, R62W, 6th P.M. TAKEN FROM THE POINT OF ROCKS, QUADRANGLE, COLORADO, WELD COUNTY, 7.5 MINUTE QUAD (TOPOGRAPHIC MAP) PUBLISHED BY THE UNITED STATES DEPARTMENT OF THE INTERIOR, GEOLOGICAL SURVEY. SAID ELEVATION IS MARKED AS BEING 4530 FEET.



LINE TABLE		
LINE	DIRECTION	LENGTH
L1	N89°19'37"E	912.67'

RSU ANSCHUTZ FED
4-62-2_1 SE3
#4-62-02-6457C
Elev. Ungraded Ground = 4527.2'

- LEGEND:
- 90° SYMBOL
 - PROPOSED WELLHEAD
 - LANDING POINT
 - TARGET BOTTOM HOLE
 - SECTION CORNERS LOCATED. (NAD 83)
 - SECTION CORNERS RE-ESTABLISHED. (Not Set on Ground.) (NAD 83)

NAD 83 (SURFACE LOCATION)	NAD 83 (LANDING POINT)	NAD 83 (TARGET BOTTOM HOLE)
LATITUDE = 40°20'05.99" (40.334997)	LATITUDE = 40°20'06.10" (40.335028)	LATITUDE = 40°20'07.87" (40.335519)
LONGITUDE = 104°18'16.75" (104.304653)	LONGITUDE = 104°18'04.97" (104.301381)	LONGITUDE = 104°15'52.50" (104.264583)
NAD 27 (SURFACE LOCATION)	NAD 27 (LANDING POINT)	NAD 27 (TARGET BOTTOM HOLE)
LATITUDE = 40°20'06.06" (40.335017)	LATITUDE = 40°20'06.17" (40.335047)	LATITUDE = 40°20'07.94" (40.335539)
LONGITUDE = 104°18'14.92" (104.304144)	LONGITUDE = 104°18'03.14" (104.300872)	LONGITUDE = 104°15'50.67" (104.264075)
STATE PLANE NAD 83 (CO. NORTH)	STATE PLANE NAD 83 (CO. NORTH)	STATE PLANE NAD 83 (CO. NORTH)
N: 1367126.71 E: 3333225.74	N: 1367150.17 E: 3334137.86	N: 1367469.41 E: 3344392.67
STATE PLANE NAD 27 (CO. NORTH)	STATE PLANE NAD 27 (CO. NORTH)	STATE PLANE NAD 27 (CO. NORTH)
N: 367128.91 E: 2333375.88	N: 367152.37 E: 2334288.01	N: 367471.65 E: 2344542.84

CERTIFICATE OF RECORD
THIS IS TO CERTIFY THAT THE ABOVE DESCRIBED SURVEY WAS MADE IN ACCORDANCE WITH THE RULES AND REGULATIONS OF THE BOARD OF LAND SURVEYORS OF THE STATE OF COLORADO, AND THAT THE SAME ARE TRUE AND CORRECT TO THE BEST OF MY KNOWLEDGE AND BELIEF.
JAMES FRESHWATER, R.F.
REGISTERED LAND SURVEYOR
REGISTRATION NO. 28285
STATE OF COLORADO
JUL 10 2017

UELTS, LLC
Corporate Office * 85 South 200 East
Vernal, UT 84078 * (435) 789-1017

SURVEYED BY JAMES FRESHWATER, R.F. 07-24-17 SCALE
DRAWN BY J.J. 08-29-17 1" = 1000'

WELL LOCATION PLAT