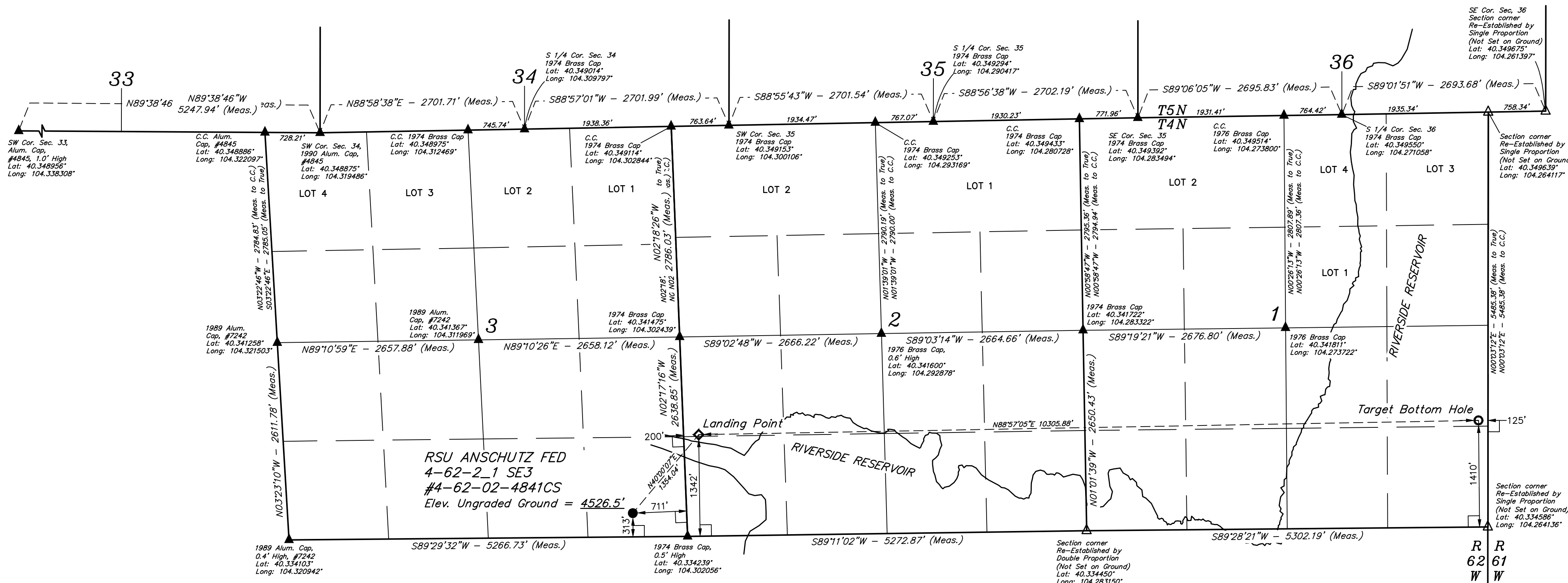
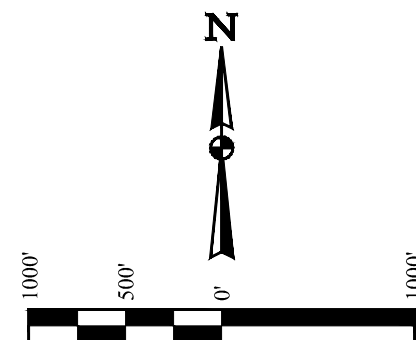


T4N, R62W, 6th P.M.

BILL BARRETT CORPORATION
RSU ANSCHUTZ FED 4-62-2 1 SE3 #4-62-02-4841CS
SE 1/4 SE 1/4, SECTION 3, T4N, R62W, 6th P.M.
WELD COUNTY, COLORADO

BASIS OF BEARINGS
BASIS OF ELEVATION
SPOT ELEVATION LOCATED AT THE NORTHEAST CORNER OF SECTION 24, T5N, R62W, 6th P.M. TAKEN FROM THE POINT OF ROCKS, QUADRANGLE, COLORADO, WELD COUNTY, 7.5 MINUTE QUAD (TOPOGRAPHIC MAP) PUBLISHED BY THE UNITED STATES DEPARTMENT OF THE INTERIOR, GEOLOGICAL SURVEY. SAID ELEVATION IS MARKED AS BEING 4530 FEET.



- LEGEND:
- 90° SYMBOL
 - PROPOSED WELLHEAD
 - LANDING POINT
 - TARGET BOTTOM HOLE
 - SECTION CORNERS LOCATED. (NAD 83)
 - SECTION CORNERS RE-ESTABLISHED. (Not Set on Ground.) (NAD 83)

REV: 1 10-02-17 J.J. (NAME CHANGE)			PDOP = 1.4
NAD 83 (SURFACE LOCATION)	NAD 83 (LANDING POINT)	NAD 83 (TARGET BOTTOM HOLE)	
LATITUDE = 40°20'06.29" (40.335081)	LATITUDE = 40°20'16.54" (40.337928)	LATITUDE = 40°20'18.43" (40.338453)	
LONGITUDE = 104°18'16.75" (104.304653)	LONGITUDE = 104°18'05.52" (104.301533)	LONGITUDE = 104°15'52.48" (104.264578)	
NAD 27 (SURFACE LOCATION)	NAD 27 (LANDING POINT)	NAD 27 (TARGET BOTTOM HOLE)	
LATITUDE = 40°20'06.36" (40.335100)	LATITUDE = 40°20'16.61" (40.337947)	LATITUDE = 40°20'18.50" (40.338472)	
LONGITUDE = 104°18'14.92" (104.304144)	LONGITUDE = 104°18'03.69" (104.301025)	LONGITUDE = 104°15'50.66" (104.264072)	
STATE PLANE NAD 83 (CO. NORTH)	STATE PLANE NAD 83 (CO. NORTH)	STATE PLANE NAD 83 (CO. NORTH)	
N: 1367156.70 E: 3333225.32	N: 1368205.70 E: 3334080.92	N: 1368538.10 E: 3344378.74	
STATE PLANE NAD 27 (CO. NORTH)	STATE PLANE NAD 27 (CO. NORTH)	STATE PLANE NAD 27 (CO. NORTH)	
N: 367158.90 E: 2333375.46	N: 368207.88 E: 2334231.06	N: 368540.30 E: 2344528.90	

CERTIFICATE OF REGISTRATION
THIS IS TO CERTIFY THAT THE ABOVE NAMED SURVEYOR HAS BEEN REGISTERED AS A LAND SURVEYOR IN THE STATE OF COLORADO AND THAT THE SAME ARE TRUE AND CORRECT TO THE BEST OF HIS KNOWLEDGE AND BELIEF.
REGISTERED LAND SURVEYOR
REGISTRATION NO. 28285
STATE OF COLORADO
J.J. (NAME CHANGE)

UELTS, LLC
Corporate Office * 85 South 200 East
Vernal, UT 84078 * (435) 789-1017
SURVEYED BY JAMES FRESHWATER, R.F. 07-24-17 SCALE
DRAWN BY J.J. 08-29-17 1" = 1000'
WELL LOCATION PLAT