



6899 Pecos Street, Unit C
Denver, Colorado 80221

CLIENT: Kerr-McGee Oil & Gas Onshore, LP

LOGGED BY: Tyler Blessing

PROJECT MANAGER: Robert Cornez

DRILLING CONTRACTOR: Tasman Geosciences

DRILLING EQUIPMENT: AMS - Powerprobe 9300 SK

DRILL BIT SIZE (INCHES): 2 3/8"

DATE STARTED - COMPLETED: 10/28/2015

TOTAL WELL DEPTH (FT. BGS): 12

DEPTH TO WATER (FT. BGS): 7.49 (10/30/2015) ▼

Platteville 63N66W19SWSW

BORING / WELL ID: BH01

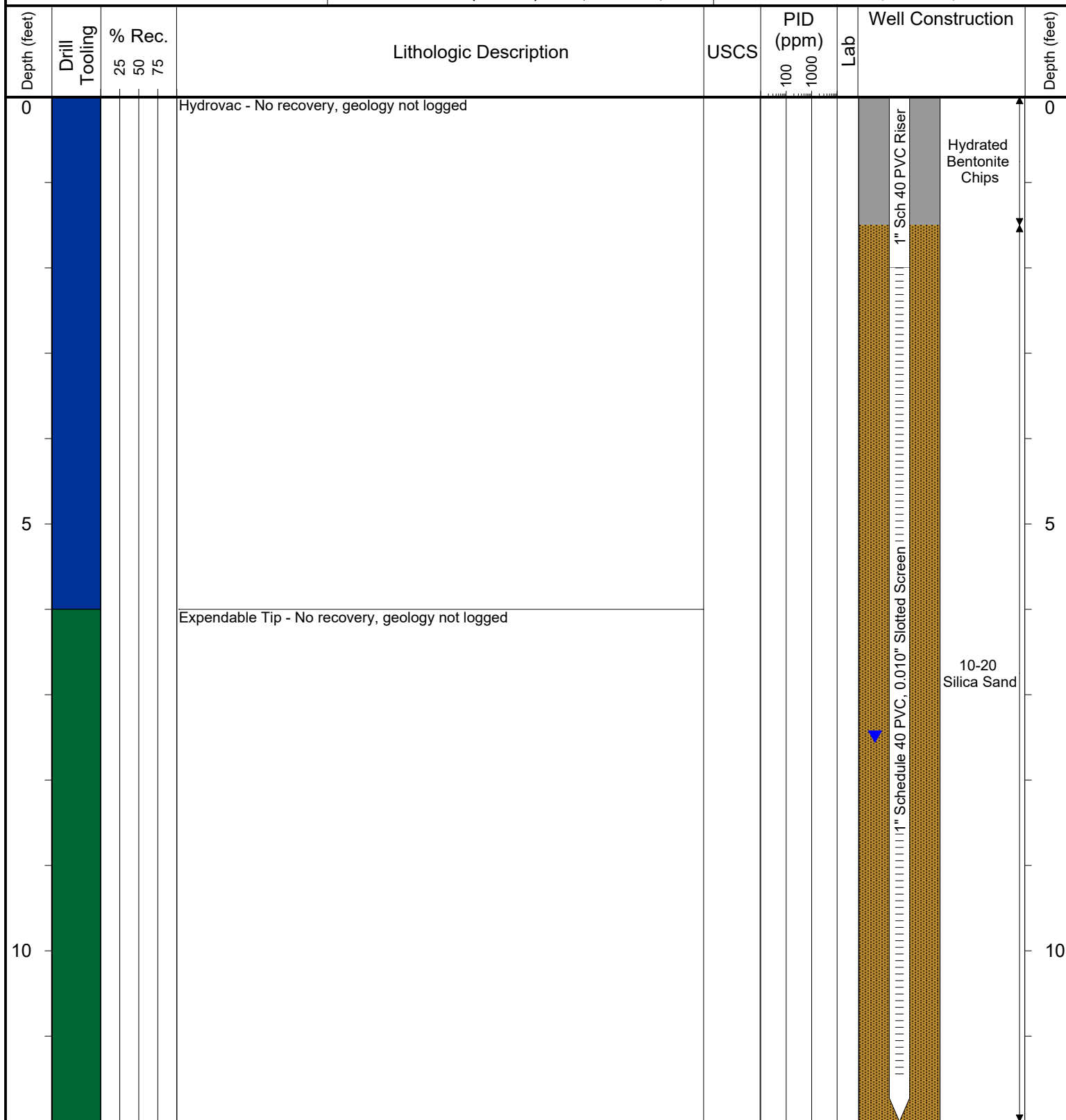
SURFACE COMPLETION: Flush Mount

NORTHING (CO STATE PLANE): 40.205781911

EASTING (CO STATE PLANE): -104.82641709

CASING ELEVATION (FT. AMSL): 4804.145

GROUND ELEVATION (FT. AMSL): 4804.655



Drilling / Sample Method:

Macro-Core
Expendable Well Tip
Hydrovac
Hand Auger

Laboratory Sample Types:

Geotechnical Lab
Analytical Chemistry Lab
Geotechnical & Analytical Chemistry Lab



6899 Pecos Street, Unit C
Denver, Colorado 80221

CLIENT: Kerr-McGee Oil & Gas Onshore, LP

LOGGED BY: Tyler Blessing

PROJECT MANAGER: Robert Cornez

DRILLING CONTRACTOR: Tasman Geosciences

DRILLING EQUIPMENT: AMS - Powerprobe 9300 SK

DRILL BIT SIZE (INCHES): 2 3/8"

DATE STARTED - COMPLETED: 10/28/2015

TOTAL WELL DEPTH (FT. BGS): 12

DEPTH TO WATER (FT. BGS): 7.75 (10/30/2015) ▼

Platteville 63N66W19SWSW

BORING / WELL ID: BH02

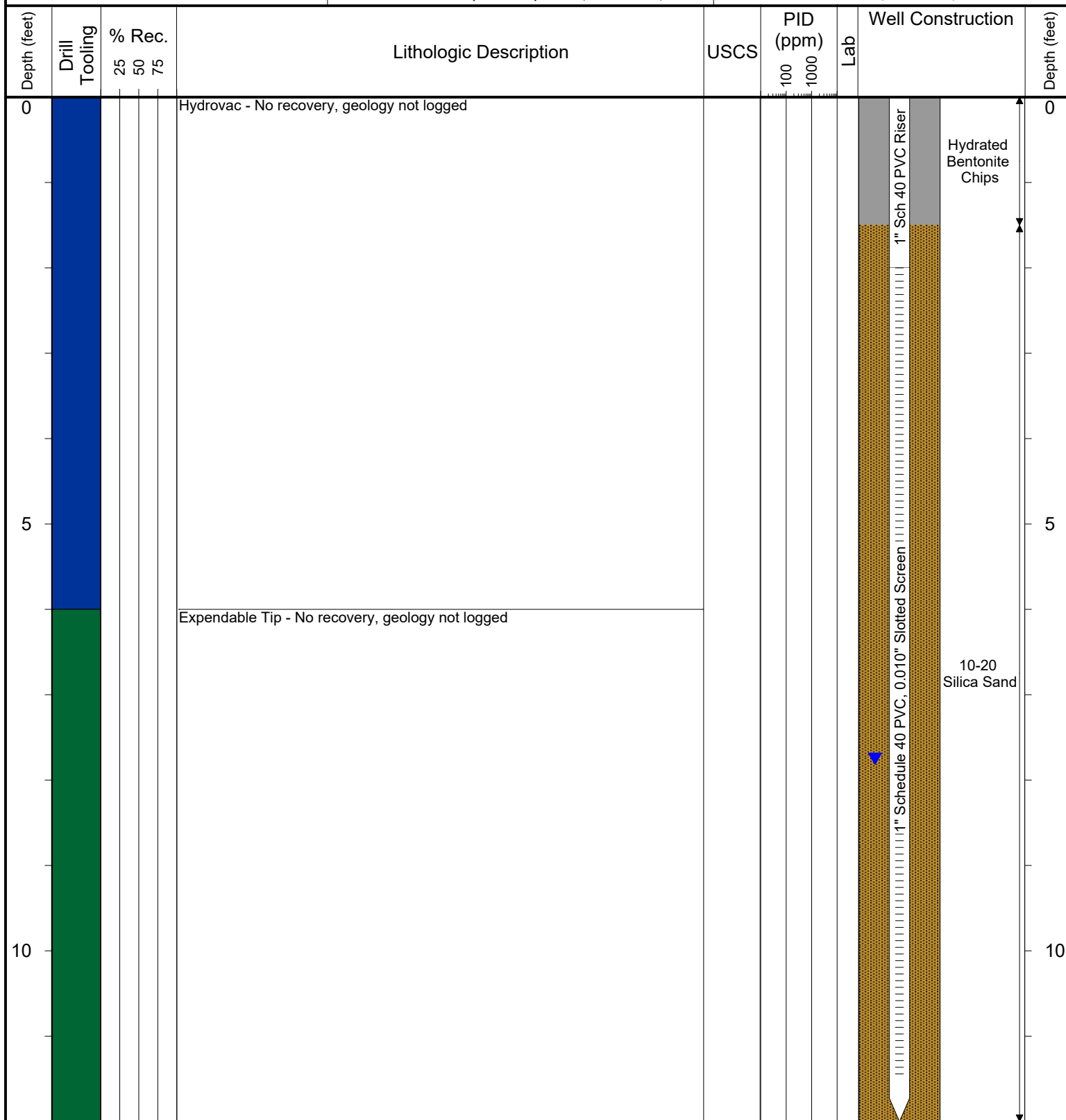
SURFACE COMPLETION: Flush Mount

NORTHING (CO STATE PLANE): 40.205782639

EASTING (CO STATE PLANE): -104.82629182

CASING ELEVATION (FT. AMSL): 4804.415

GROUND ELEVATION (FT. AMSL): 4805.005



Drilling / Sample Method:

- Macro-Core
- Expendable Well Tip
- Hydrovac
- Hand Auger

Laboratory Sample Types:

- Geotechnical Lab
- Analytical Chemistry Lab
- Geotechnical & Analytical Chemistry Lab



6899 Pecos Street, Unit C
Denver, Colorado 80221

CLIENT: Kerr-McGee Oil & Gas Onshore, LP

LOGGED BY: Tyler Blessing

PROJECT MANAGER: Robert Cornez

DRILLING CONTRACTOR: Tasman Geosciences

DRILLING EQUIPMENT: AMS - Powerprobe 9300 SK

DRILL BIT SIZE (INCHES): 2 3/8"

DATE STARTED - COMPLETED: 10/28/2015

TOTAL WELL DEPTH (FT. BGS): 12

DEPTH TO WATER (FT. BGS): 8.98 (10/30/2015) ▼

Platteville 63N66W19SWSW

BORING / WELL ID: BH03

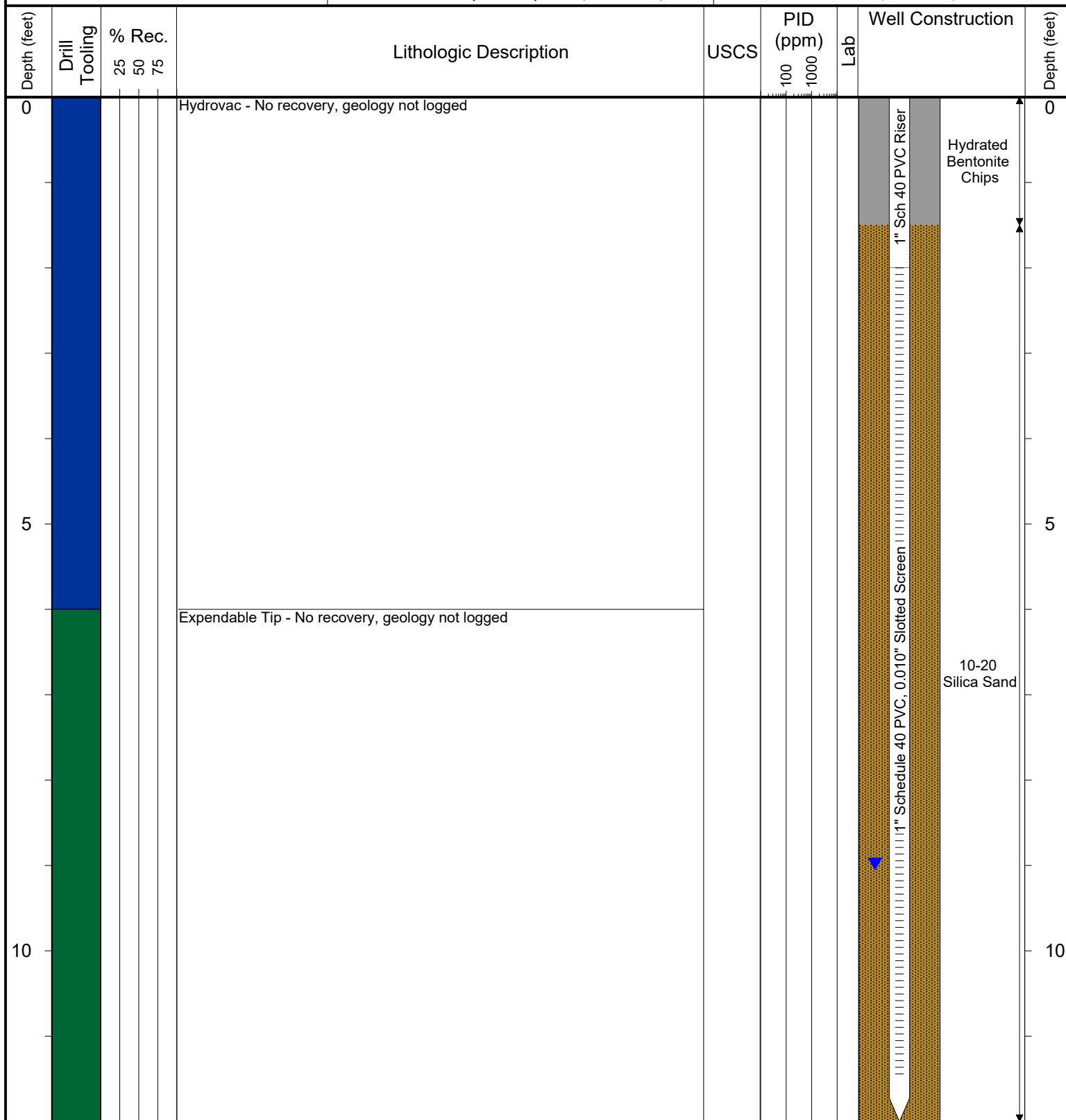
SURFACE COMPLETION: Flush Mount

NORTHING (CO STATE PLANE): 40.205684201

EASTING (CO STATE PLANE): -104.82617304

CASING ELEVATION (FT. AMSL): 4805.745

GROUND ELEVATION (FT. AMSL): 4806.355



Drilling / Sample Method:

Macro-Core

Expendable Well Tip

Hydrovac

Hand Auger

Laboratory Sample Types:

Geotechnical Lab

Analytical Chemistry Lab



Geotechnical & Analytical Chemistry Lab



6899 Pecos Street, Unit C
Denver, Colorado 80221

CLIENT: Kerr-McGee Oil & Gas Onshore, LP

LOGGED BY: Tyler Blessing

PROJECT MANAGER: Robert Cornez

DRILLING CONTRACTOR: Tasman Geosciences

DRILLING EQUIPMENT: AMS - Powerprobe 9300 SK

DRILL BIT SIZE (INCHES): 2 3/8"

DATE STARTED - COMPLETED: 10/28/2015

TOTAL WELL DEPTH (FT. BGS): 12

DEPTH TO WATER (FT. BGS): 7.94 (10/30/2015) ▼

Platteville 63N66W19SWSW

BORING / WELL ID: BH04

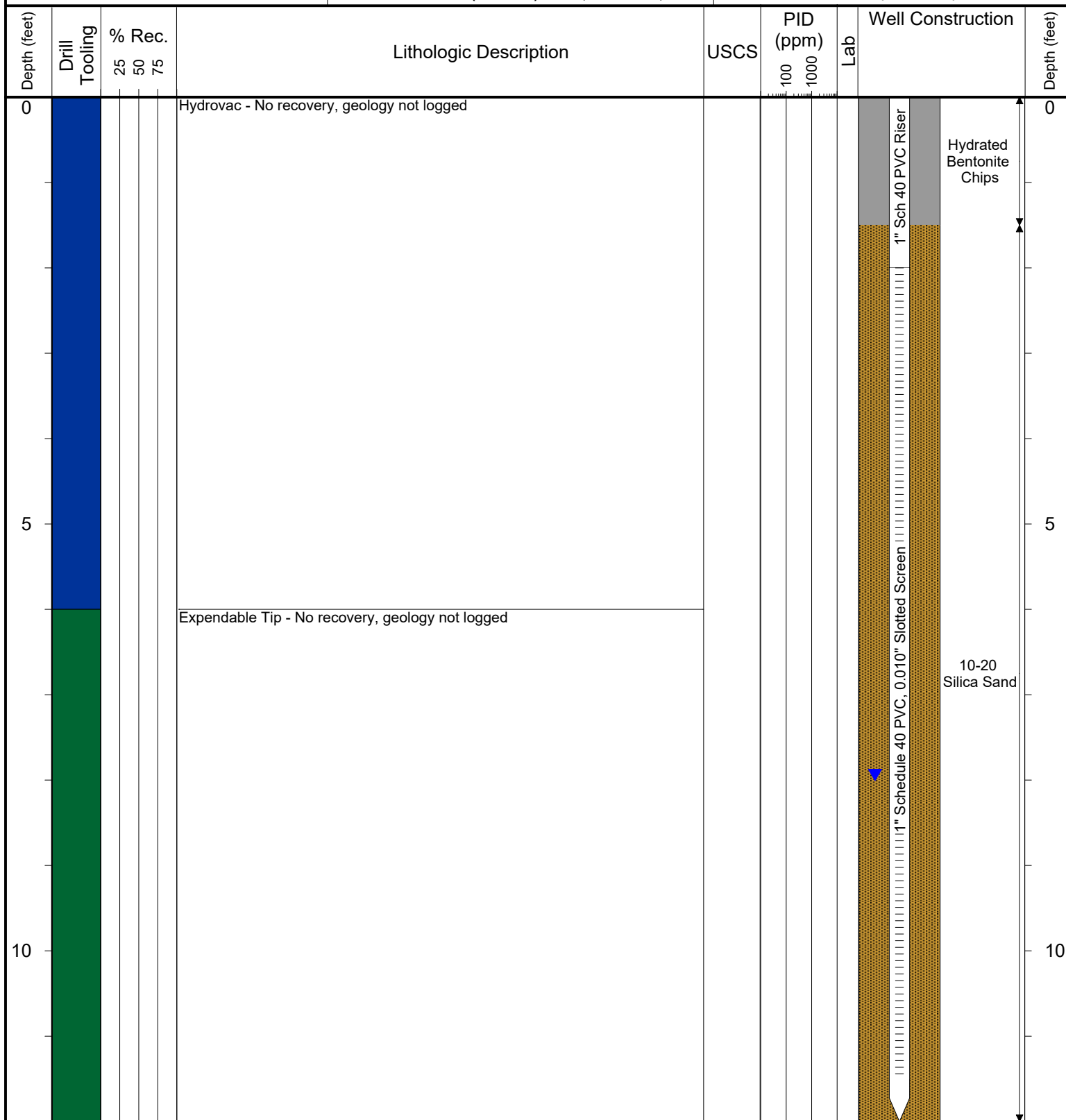
SURFACE COMPLETION: Flush Mount

NORTHING (CO STATE PLANE): 40.205684228

EASTING (CO STATE PLANE): -104.82642262

CASING ELEVATION (FT. AMSL): 4804.695

GROUND ELEVATION (FT. AMSL): 4805.335



Drilling / Sample Method:

- Macro-Core
- Expendable Well Tip
- Hydrovac
- Hand Auger

Laboratory Sample Types:

- Geotechnical Lab
- Analytical Chemistry Lab
- Geotechnical & Analytical Chemistry Lab



6899 Pecos Street, Unit C
Denver, Colorado 80221

CLIENT: Kerr-McGee Oil & Gas Onshore, LP

LOGGED BY: Tyler Blessing

PROJECT MANAGER: Robert Cornez

DRILLING CONTRACTOR: Tasman Geosciences

DRILLING EQUIPMENT: AMS - Powerprobe 9300 SK

DRILL BIT SIZE (INCHES): 2 3/8"

DATE STARTED - COMPLETED: 3/28/2016

TOTAL WELL DEPTH (FT. BGS): 14

DEPTH TO WATER (FT. BGS): 10.86 (4/28/2016) ▼

Platteville 63N66W19SWSW

BORING / WELL ID: BH05

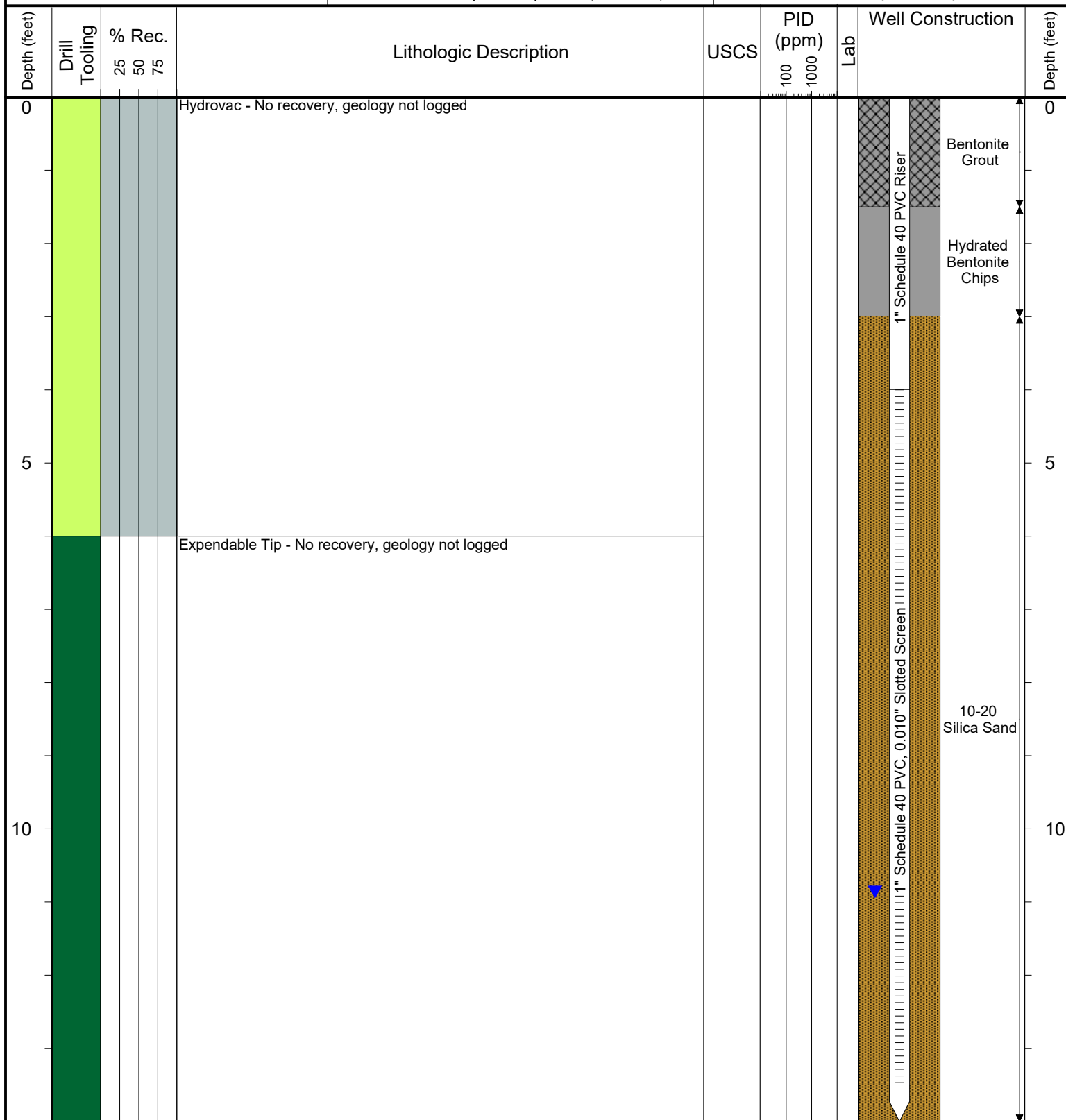
SURFACE COMPLETION: Flush Mount

NORTHING (CO STATE PLANE): 40.20559099

EASTING (CO STATE PLANE): -104.8263968

CASING ELEVATION (FT. AMSL): 4808.495

GROUND ELEVATION (FT. AMSL): 4808.675



Drilling / Sample Method:

Macro-Core

Hydrovac

Expendable Well Tip

Hand Auger

Laboratory Sample Types:

Geotechnical Lab

Analytical Chemistry Lab

Geotechnical & Analytical Chemistry Lab



6899 Pecos Street, Unit C
Denver, Colorado 80221

CLIENT: Kerr-McGee Oil & Gas Onshore, LP

LOGGED BY: Tyler Blessing

PROJECT MANAGER: Robert Cornez

DRILLING CONTRACTOR: Tasman Geosciences

DRILLING EQUIPMENT: AMS - Powerprobe 9300 SK

DRILL BIT SIZE (INCHES): 2 3/8"

DATE STARTED - COMPLETED: 3/28/2016

TOTAL WELL DEPTH (FT. BGS): 14

DEPTH TO WATER (FT. BGS): 7.27 (4/28/2016) ▼

Platteville 63N66W19SWSW

BORING / WELL ID: BH06

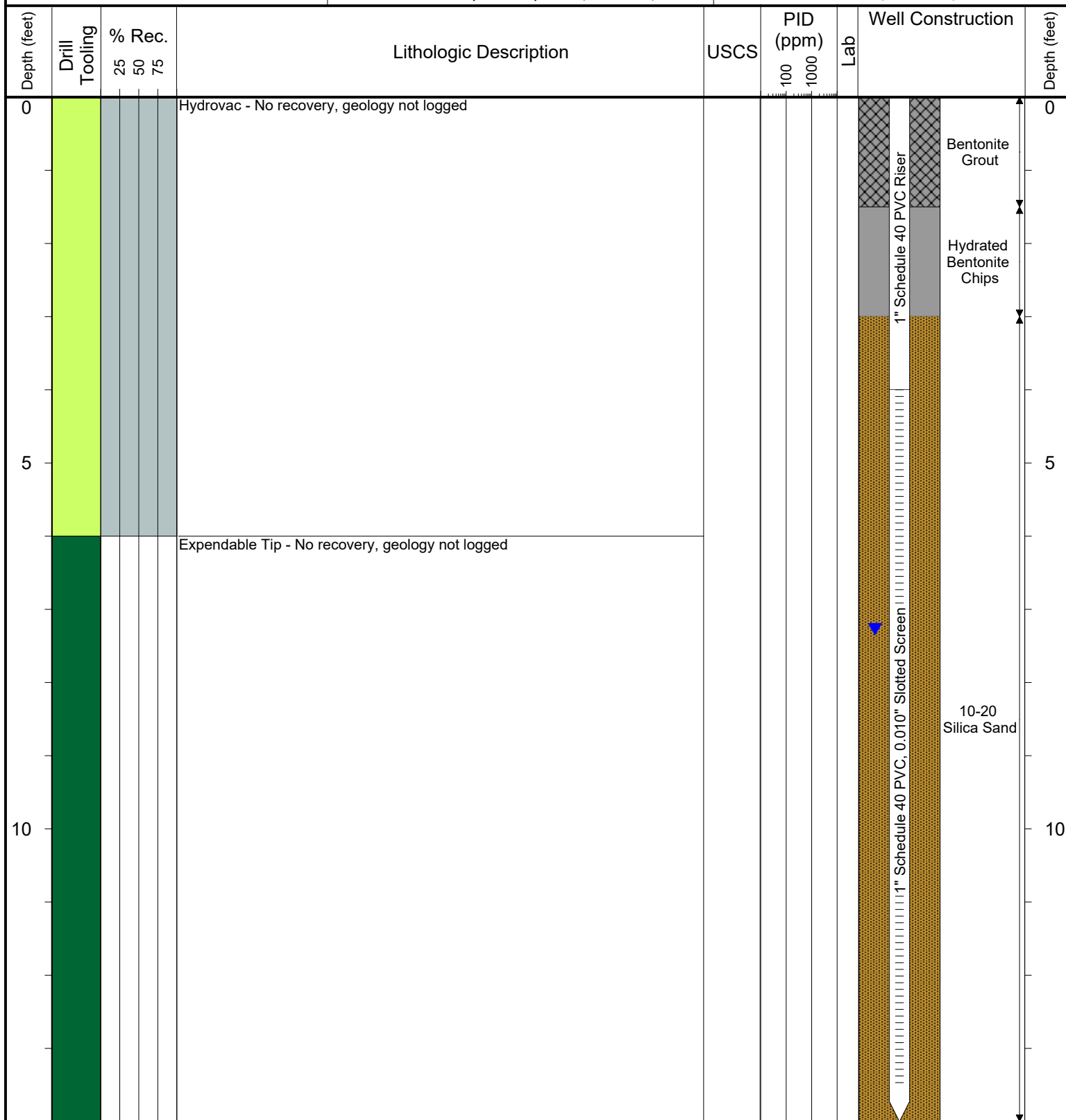
SURFACE COMPLETION: Flush Mount

NORTHING (CO STATE PLANE): 40.205704035

EASTING (CO STATE PLANE): -104.82650415

CASING ELEVATION (FT. AMSL): 4804.895

GROUND ELEVATION (FT. AMSL): 4805.285



Drilling / Sample Method:

Macro-Core
Expendable Well Tip

Hydrovac
Hand Auger

Laboratory Sample Types:

Geotechnical Lab
Analytical Chemistry Lab

Geotechnical & Analytical Chemistry Lab



6899 Pecos Street, Unit C
Denver, Colorado 80221

CLIENT: Kerr-McGee Oil & Gas Onshore, LP

LOGGED BY: Tyler Blessing

PROJECT MANAGER: Robert Cornez

DRILLING CONTRACTOR: Tasman Geosciences

DRILLING EQUIPMENT: AMS - Powerprobe 9300 SK

DRILL BIT SIZE (INCHES): 2 3/8"

DATE STARTED - COMPLETED: 3/28/2016

TOTAL WELL DEPTH (FT. BGS): 14

DEPTH TO WATER (FT. BGS): 6.94 (4/28/2016) ▼

Platteville 63N66W19SWSW

BORING / WELL ID: BH07

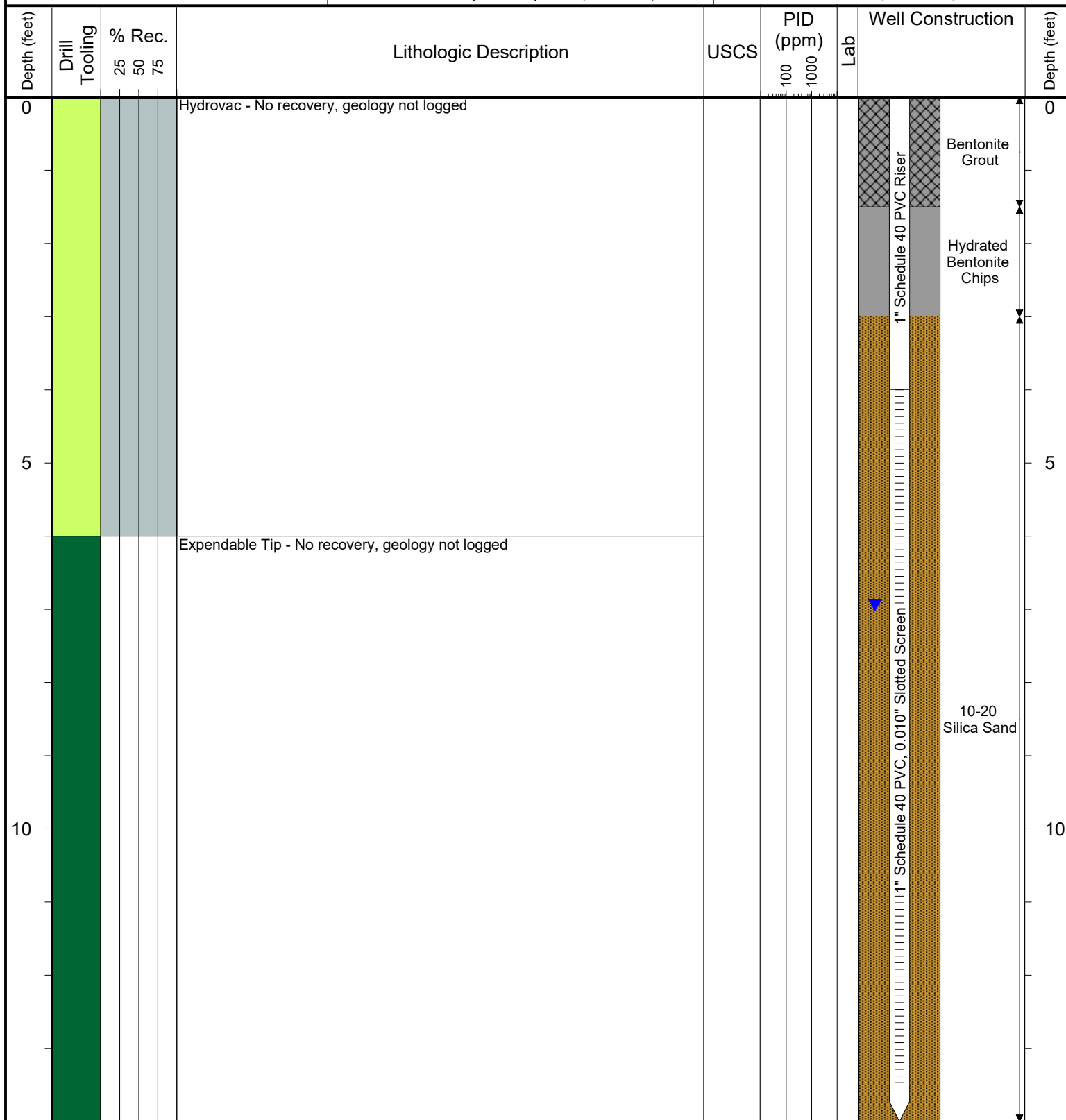
SURFACE COMPLETION: Flush Mount

NORTHING (CO STATE PLANE): 40.20583471

EASTING (CO STATE PLANE): -104.82646125

CASING ELEVATION (FT. AMSL): 4804.785

GROUND ELEVATION (FT. AMSL): 4804.415



Drilling / Sample Method:

Macro-Core
Expendable Well Tip

Hydrovac
Hand Auger

Laboratory Sample Types:

Geotechnical Lab
Analytical Chemistry Lab

Geotechnical & Analytical Chemistry Lab



6899 Pecos Street, Unit C
Denver, Colorado 80221

CLIENT: Kerr-McGee Oil & Gas Onshore, LP

LOGGED BY: Tyler Blessing

PROJECT MANAGER: Robert Cornez

DRILLING CONTRACTOR: Tasman Geosciences

DRILLING EQUIPMENT: AMS - Powerprobe 9300 SK

DRILL BIT SIZE (INCHES): 2 3/8"

DATE STARTED - COMPLETED: 3/28/2016

TOTAL WELL DEPTH (FT. BGS): 14

DEPTH TO WATER (FT. BGS): 7.24 (4/28/2016) ▼

Platteville 63N66W19SWSW

BORING / WELL ID: BH08

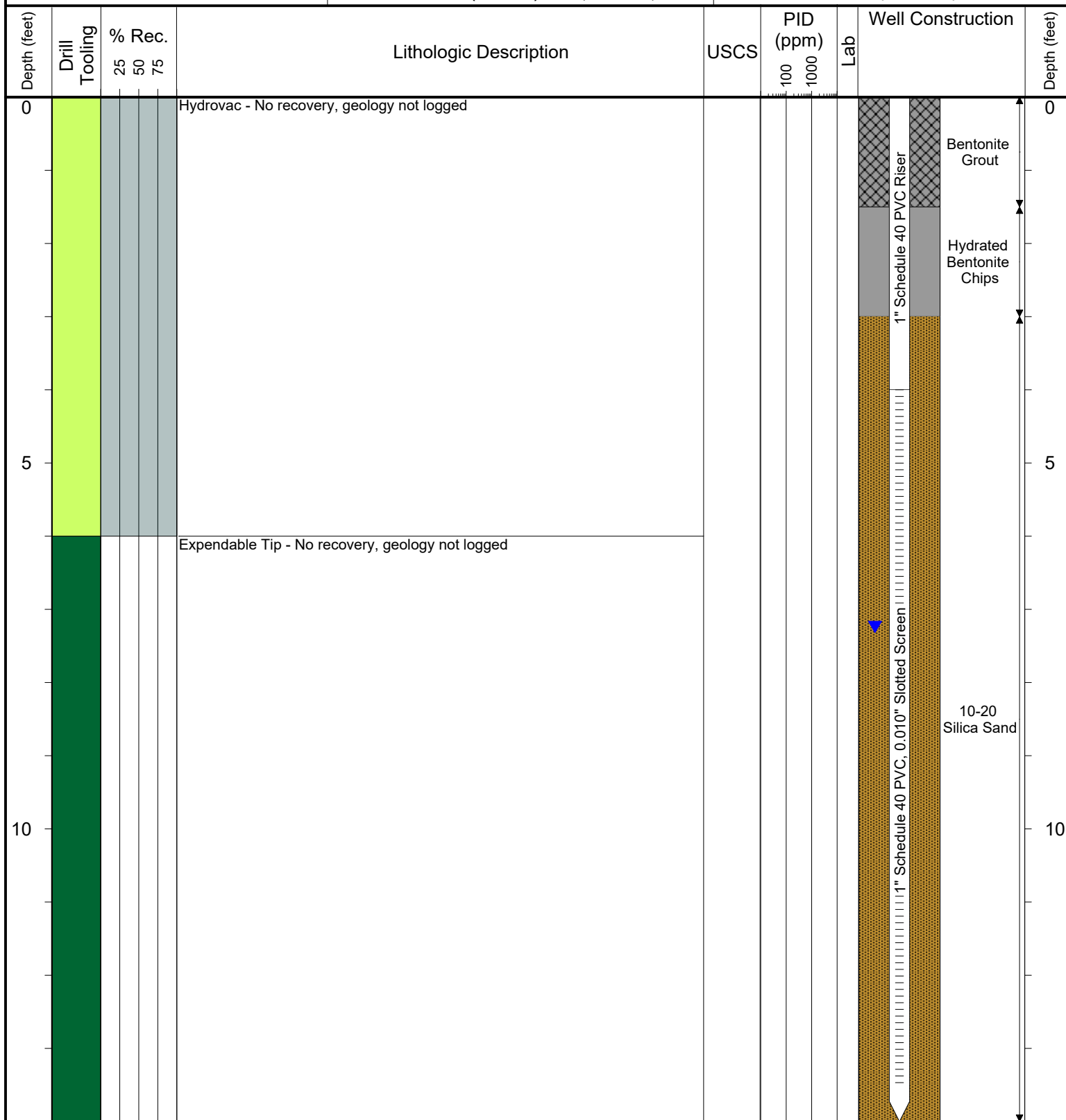
SURFACE COMPLETION: Flush Mount

NORTHING (CO STATE PLANE): 40.205836529

EASTING (CO STATE PLANE): -104.8263195

CASING ELEVATION (FT. AMSL): 4804.685

GROUND ELEVATION (FT. AMSL): 4805.025



Drilling / Sample Method:

Macro-Core

Hydrovac

Expendable Well Tip

Hand Auger

Laboratory Sample Types:

Geotechnical Lab

Analytical Chemistry Lab

Geotechnical & Analytical Chemistry Lab



6899 Pecos Street, Unit C
Denver, Colorado 80221

CLIENT: Kerr-McGee Oil & Gas Onshore, LP

LOGGED BY: Tyler Blessing

PROJECT MANAGER: Robert Cornez

DRILLING CONTRACTOR: Tasman Geosciences

DRILLING EQUIPMENT: AMS - Powerprobe 9300 SK

DRILL BIT SIZE (INCHES): 2 3/8"

DATE STARTED - COMPLETED: 3/28/2016

TOTAL WELL DEPTH (FT. BGS): 14

DEPTH TO WATER (FT. BGS): 7.36 (4/28/2016) ▼

Platteville 63N66W19SWSW

BORING / WELL ID: BH09 (Destroyed)

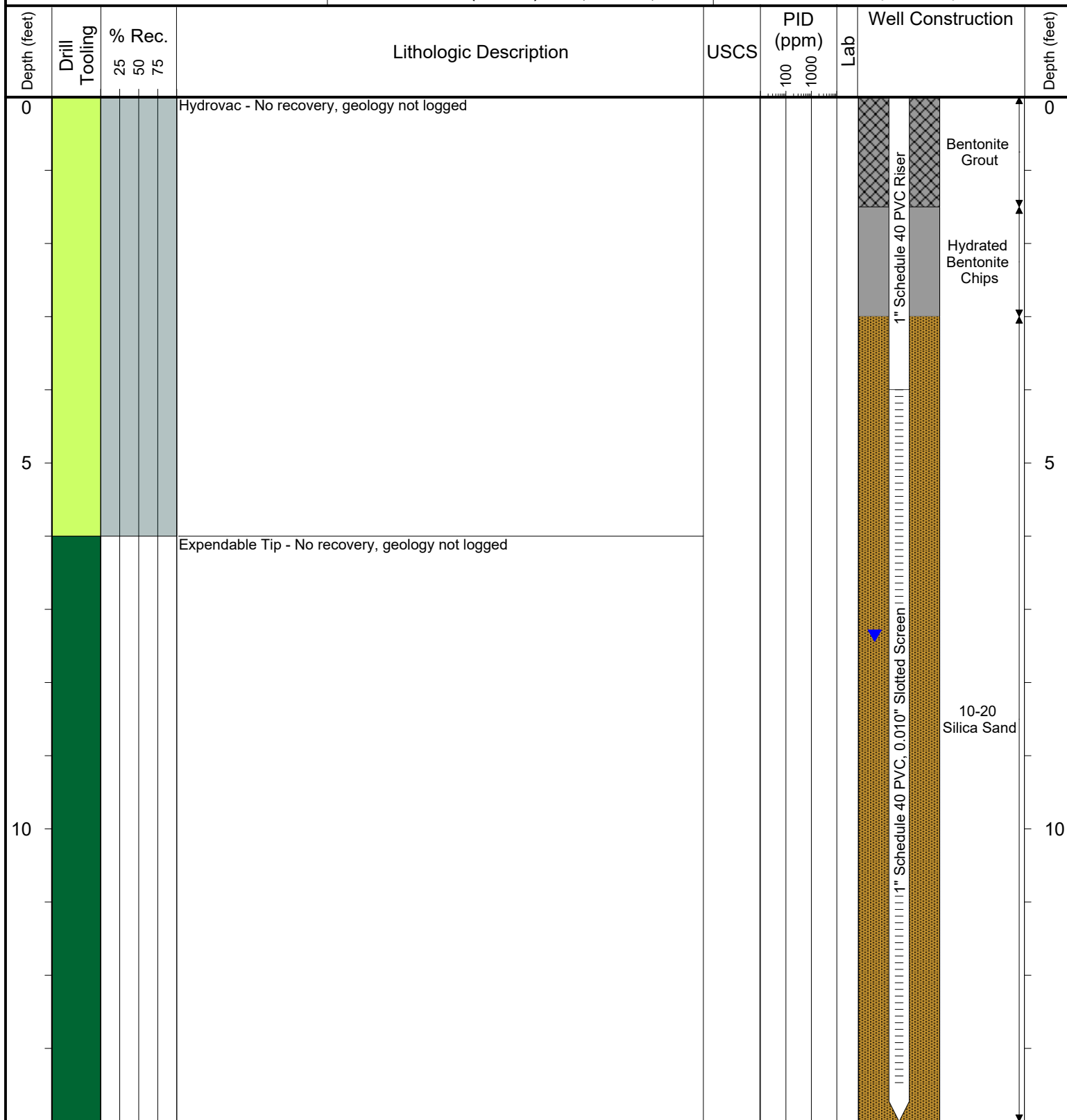
SURFACE COMPLETION: Flush Mount

NORTHING (CO STATE PLANE): 40.205728797

EASTING (CO STATE PLANE): -104.8263967

CASING ELEVATION (FT. AMSL): 4804.91

GROUND ELEVATION (FT. AMSL): 4805.045



Drilling / Sample Method:

Macro-Core
 Expendable Well Tip
 Hydrovac
 Hand Auger

Laboratory Sample Types:

Geotechnical Lab
 Analytical Chemistry Lab
 Geotechnical & Analytical Chemistry Lab



6899 Pecos Street, Unit C
Denver, Colorado 80221

CLIENT: Kerr-McGee Oil & Gas Onshore, LP

LOGGED BY: Tyler Blessing

PROJECT MANAGER: Robert Cornez

DRILLING CONTRACTOR: Tasman Geosciences

DRILLING EQUIPMENT: AMS - Powerprobe 9300 SK

DRILL BIT SIZE (INCHES): 2 3/8"

DATE STARTED - COMPLETED: 5/13/2016

TOTAL WELL DEPTH (FT. BGS): 15

DEPTH TO WATER (FT. BGS): 8.00 (7/8/2016) ▼

Platteville 63N66W19SWSW

BORING / WELL ID: BH09R

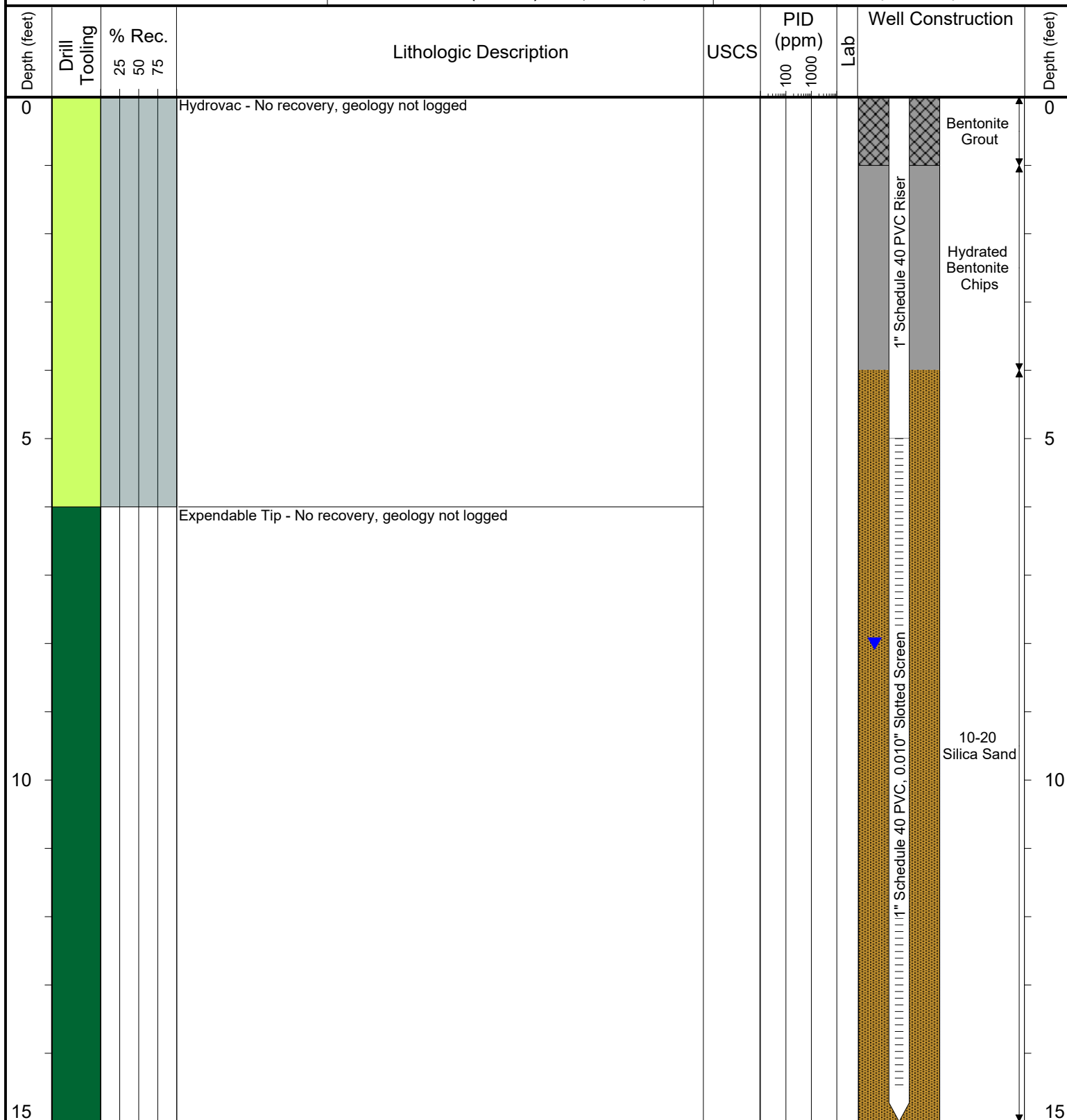
SURFACE COMPLETION: Flush Mount

NORTHING (CO STATE PLANE): 40.205738928

EASTING (CO STATE PLANE): -104.826406

CASING ELEVATION (FT. AMSL): 4804.735

GROUND ELEVATION (FT. AMSL): 4805.055



Drilling / Sample Method:

Macro-Core

Hydrovac

Expendable Well Tip

Hand Auger

Laboratory Sample Types:

Geotechnical Lab

Analytical Chemistry Lab

Geotechnical & Analytical Chemistry Lab



6899 Pecos Street, Unit C
Denver, Colorado 80221

CLIENT: Kerr-McGee Oil & Gas Onshore, LP

LOGGED BY: Eric Siegel, P. G.

PROJECT MANAGER: Robert Cornez

DRILLING CONTRACTOR: Tasman Geosciences

DRILLING EQUIPMENT: AMS - Powerprobe 9300 SK

DRILL BIT SIZE (INCHES): 2 3/8"

DATE STARTED - COMPLETED: 4/24/2017

TOTAL WELL DEPTH (FT. BGS): 16

DEPTH TO WATER (FT. BGS): 9.33 (7/11/2017) ▼

Platteville 63N66W19SWSW

BORING / WELL ID: BH10

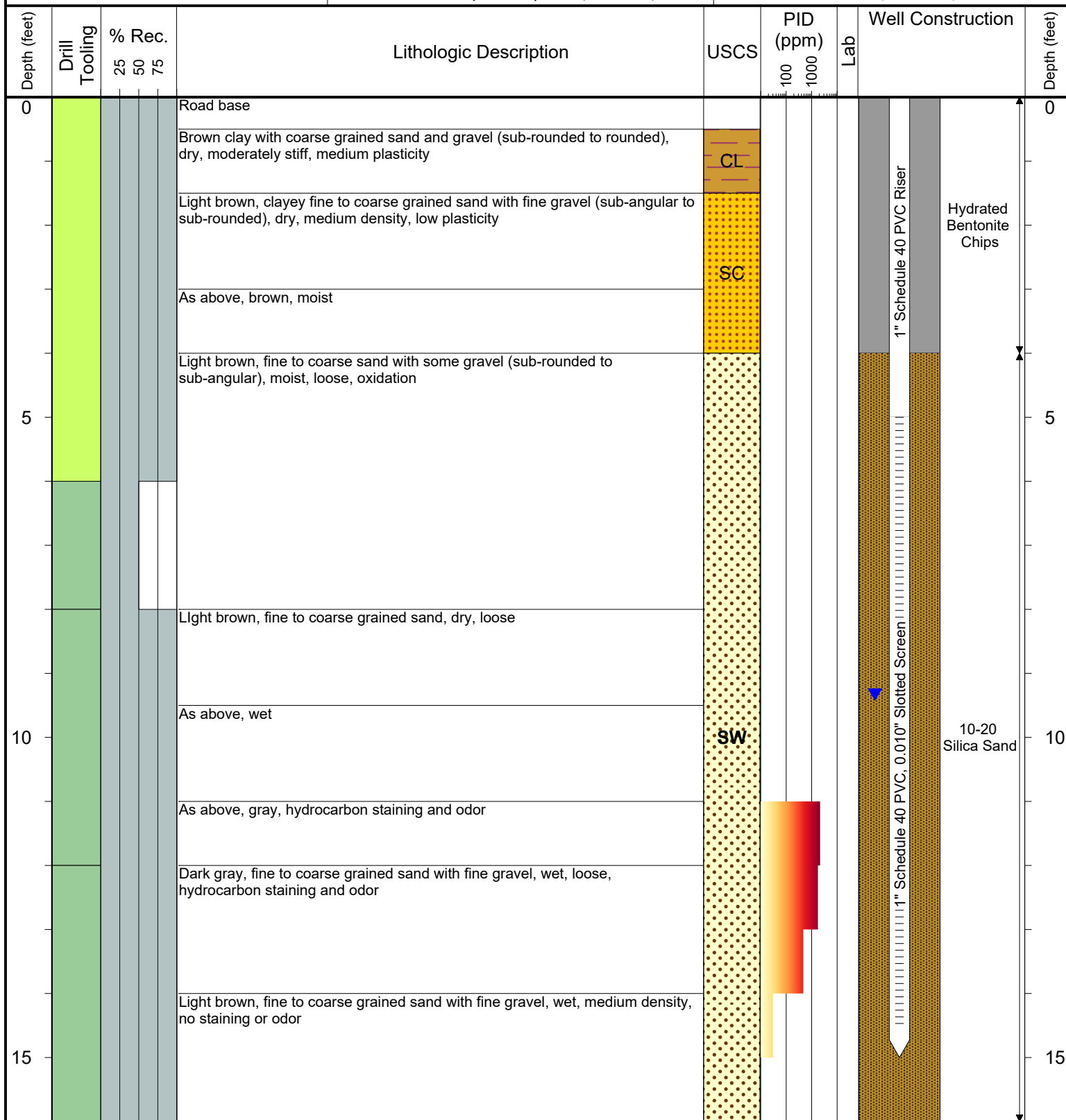
SURFACE COMPLETION: Flush Mount

NORTHING (CO STATE PLANE): 40.205928773

EASTING (CO STATE PLANE): -104.8261969

CASING ELEVATION (FT. AMSL): 4805.705

GROUND ELEVATION (FT. AMSL): 4805.925



Drilling / Sample Method:

Macro-Core
Expendable Well Tip
Hydrovac
Hand Auger

Laboratory Sample Types:

Geotechnical Lab
Analytical Chemistry Lab
Geotechnical & Analytical Chemistry Lab



6899 Pecos Street, Unit C
Denver, Colorado 80221

CLIENT: Kerr-McGee Oil & Gas Onshore, LP

LOGGED BY: Eric Siegel, P. G.

PROJECT MANAGER: Robert Cornez

DRILLING CONTRACTOR: Tasman Geosciences

DRILLING EQUIPMENT: AMS - Powerprobe 9300 SK

DRILL BIT SIZE (INCHES): 2 3/8"

DATE STARTED - COMPLETED: 4/24/2017

TOTAL WELL DEPTH (FT. BGS): 16

DEPTH TO WATER (FT. BGS): 13.71 (7/11/2017) ▼

Platteville 63N66W19SWSW

BORING / WELL ID: BH11

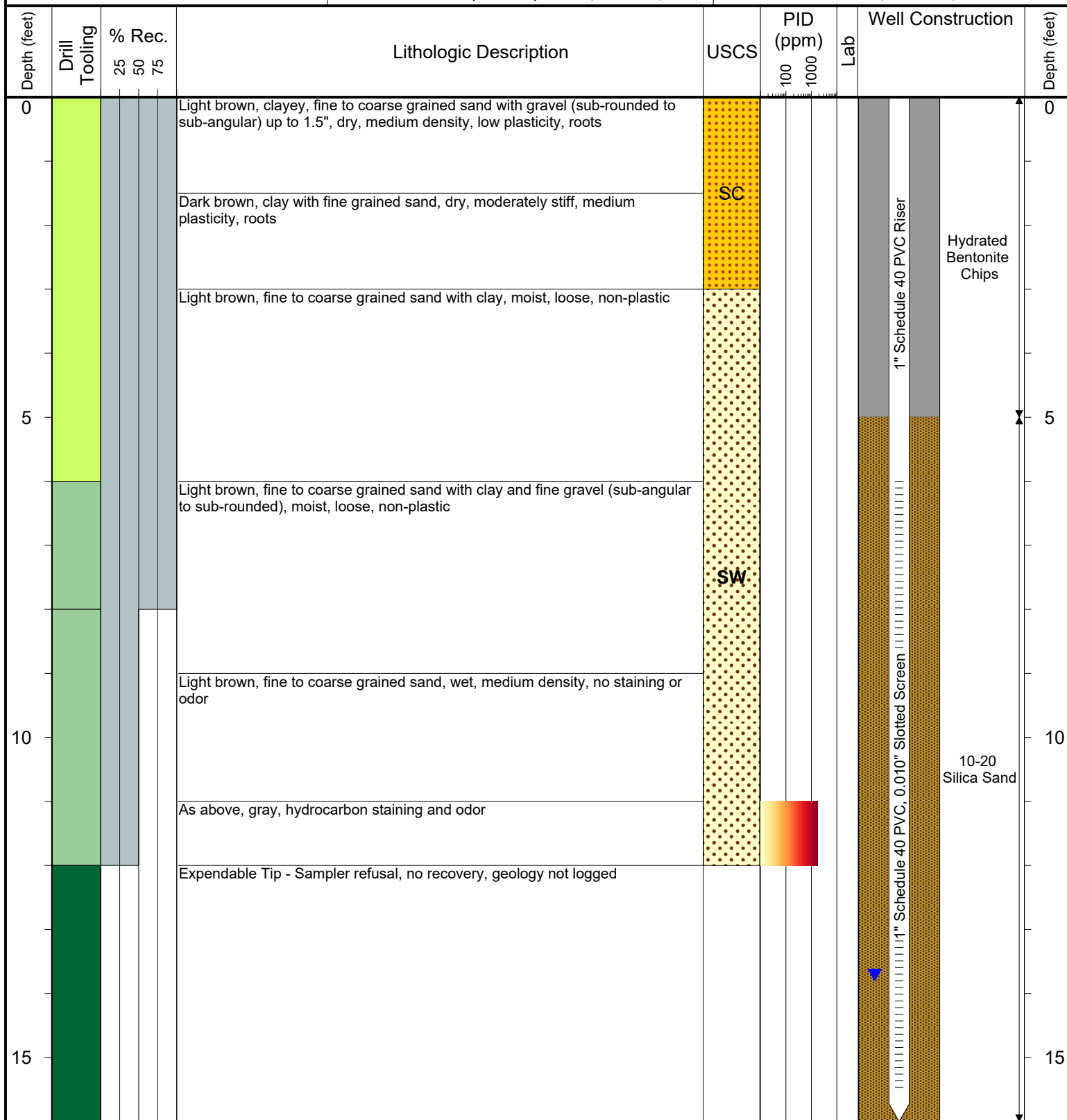
SURFACE COMPLETION: Stick up - 4.02'

NORTHING (CO STATE PLANE): 40.205994104

EASTING (CO STATE PLANE): -104.8263102

CASING ELEVATION (FT. AMSL): 4809.955

GROUND ELEVATION (FT. AMSL): 4805.935



Drilling / Sample Method:

Macro-Core
Expendable Well Tip
Hydrovac
Hand Auger

Laboratory Sample Types:

Geotechnical Lab
Analytical Chemistry Lab
Geotechnical & Analytical Chemistry Lab



6899 Pecos Street, Unit C
Denver, Colorado 80221

CLIENT: Kerr-McGee Oil & Gas Onshore, LP

LOGGED BY: Eric Siegel, P. G.

PROJECT MANAGER: Robert Cornez

DRILLING CONTRACTOR: Tasman Geosciences

DRILLING EQUIPMENT: AMS - Powerprobe 9300 SK

DRILL BIT SIZE (INCHES): 2 3/8"

DATE STARTED - COMPLETED: 4/24/2017

TOTAL WELL DEPTH (FT. BGS): 16

DEPTH TO WATER (FT. BGS): 12.44 (7/11/2017) ▼

Platteville 63N66W19SWSW

BORING / WELL ID: BH12

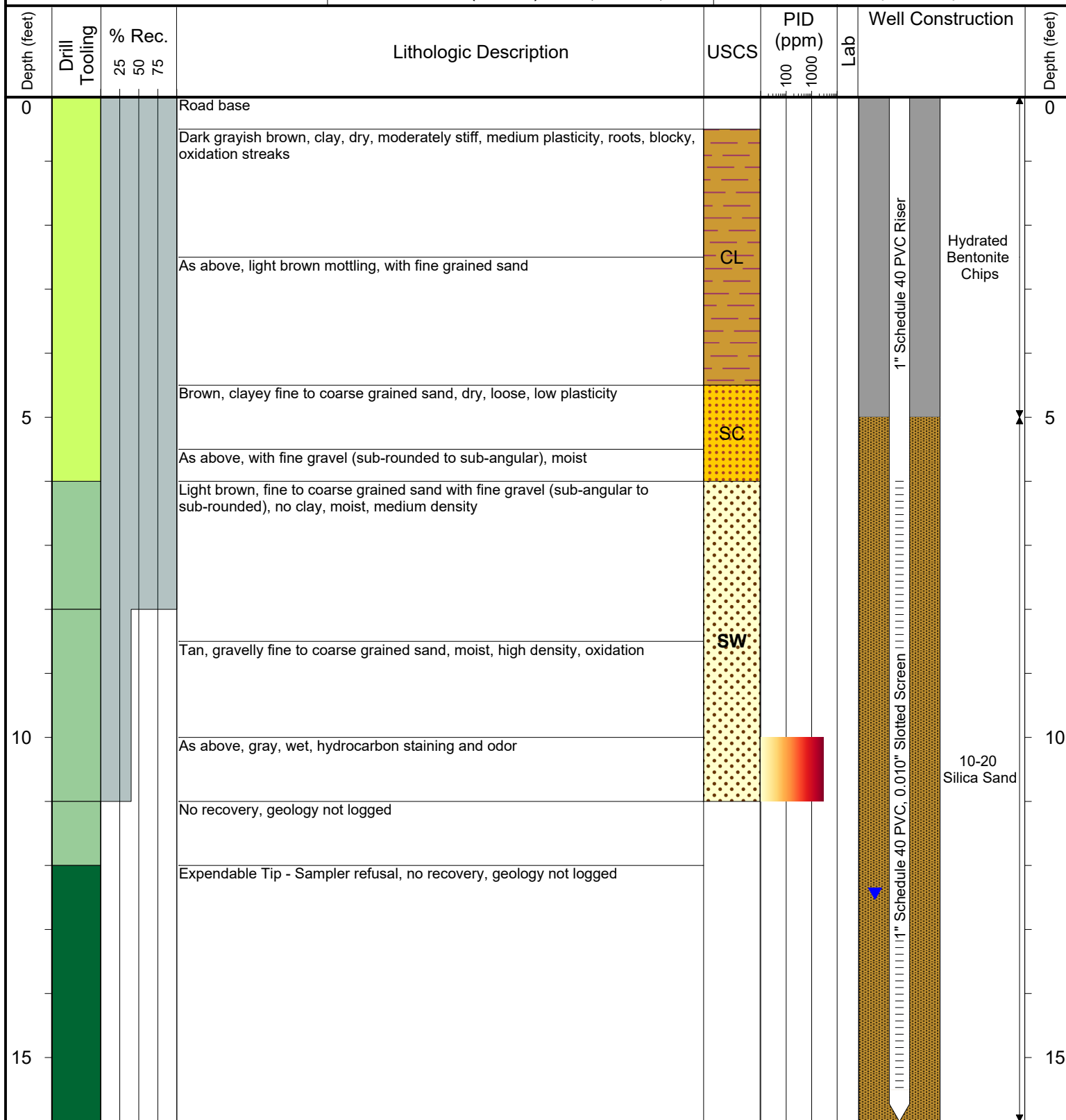
SURFACE COMPLETION: Stick up - 3.40'

NORTHING (CO STATE PLANE): 40.205932766

EASTING (CO STATE PLANE): -104.82641008

CASING ELEVATION (FT. AMSL): 4808.745

GROUND ELEVATION (FT. AMSL): 4805.345



Drilling / Sample Method:

Macro-Core
Expendable Well Tip

Hydrovac

Hand Auger

Laboratory Sample Types:

Geotechnical Lab

Analytical Chemistry Lab

Geotechnical & Analytical Chemistry Lab



6899 Pecos Street, Unit C
Denver, Colorado 80221

CLIENT: Kerr-McGee Oil & Gas Onshore, LP

LOGGED BY: Graham Besecke

PROJECT MANAGER: Robert Cornez

DRILLING CONTRACTOR: Tasman Geosciences

DRILLING EQUIPMENT: AMS - Powerprobe 9300 SK

DRILL BIT SIZE (INCHES): 2 3/8"

DATE STARTED - COMPLETED: 4/25/2017

TOTAL WELL DEPTH (FT. BGS): 20

DEPTH TO WATER (FT. BGS): 13.61 (7/11/2017) ▼

Platteville 63N66W19SWSW

BORING / WELL ID: BH13

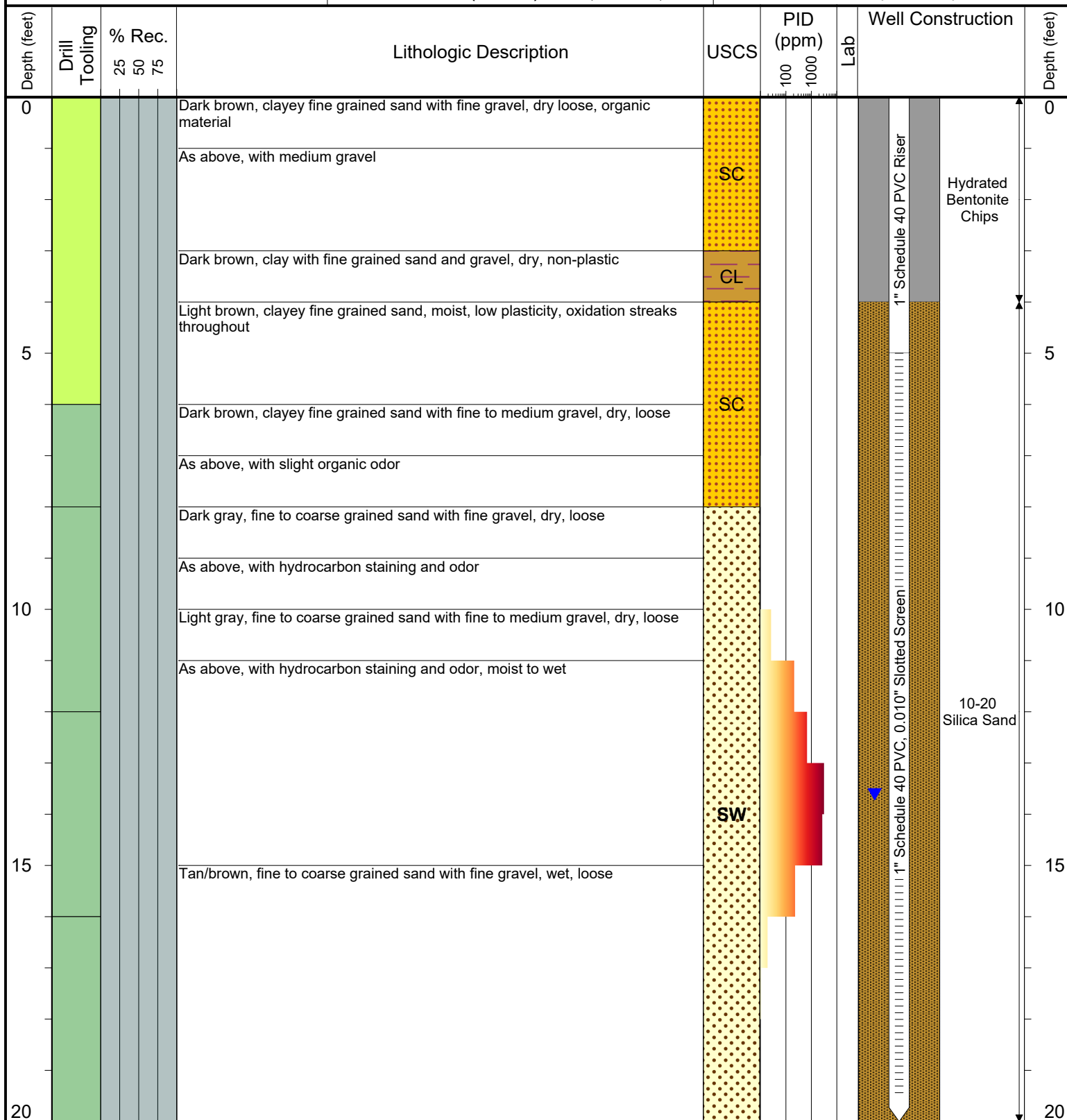
SURFACE COMPLETION: Stick up - 3.02'

NORTHING (CO STATE PLANE): 40.20592094

EASTING (CO STATE PLANE): -104.82656408

CASING ELEVATION (FT. AMSL): 4809.885

GROUND ELEVATION (FT. AMSL): 4806.865



Drilling / Sample Method:

Macro-Core

Hydrovac

Expendable Well Tip

Hand Auger

Laboratory Sample Types:

Geotechnical Lab

Analytical Chemistry Lab

Geotechnical & Analytical Chemistry Lab



6899 Pecos Street, Unit C
Denver, Colorado 80221

CLIENT: Kerr-McGee Oil & Gas Onshore, LP

LOGGED BY: Eric Siegel, P. G.

PROJECT MANAGER: Robert Cornez

DRILLING CONTRACTOR: Tasman Geosciences

DRILLING EQUIPMENT: AMS - Powerprobe 9300 SK

DRILL BIT SIZE (INCHES): 2 3/8"

DATE STARTED - COMPLETED: 4/24/2017

TOTAL WELL DEPTH (FT. BGS): 16

DEPTH TO WATER (FT. BGS): 10.01 (7/11/2017) ▼

Platteville 63N66W19SWSW

BORING / WELL ID: BH14

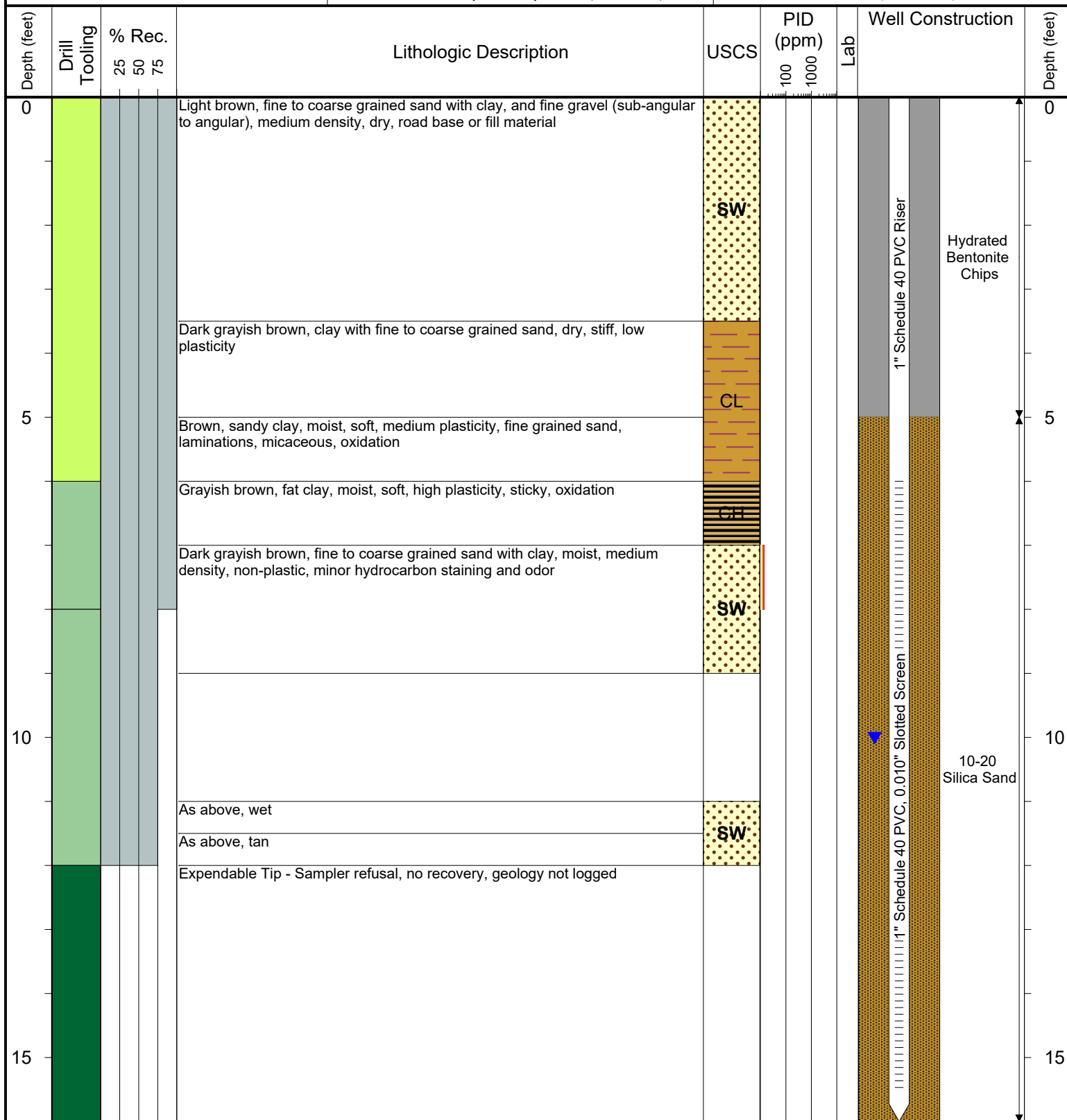
SURFACE COMPLETION: Flush Mount

NORTHING (CO STATE PLANE): 40.205834498

EASTING (CO STATE PLANE): -104.82664397

CASING ELEVATION (FT. AMSL): 4806.355

GROUND ELEVATION (FT. AMSL): 4806.705



Drilling / Sample Method:

Macro-Core
Expendable Well Tip

Hydrovac
Hand Auger

Laboratory Sample Types:

Geotechnical Lab
Analytical Chemistry Lab

Geotechnical & Analytical Chemistry Lab



6899 Pecos Street, Unit C
Denver, Colorado 80221

CLIENT: Kerr-McGee Oil & Gas Onshore, LP

LOGGED BY: Eric Siegel, P. G.

PROJECT MANAGER: Robert Cornez

DRILLING CONTRACTOR: Tasman Geosciences

DRILLING EQUIPMENT: AMS - Powerprobe 9300 SK

DRILL BIT SIZE (INCHES): 2 3/8"

DATE STARTED - COMPLETED: 4/24/2017

TOTAL WELL DEPTH (FT. BGS): 16

DEPTH TO WATER (FT. BGS): 12.35 (7/11/2017) ▼

Platteville 63N66W19SWSW

BORING / WELL ID: BH15

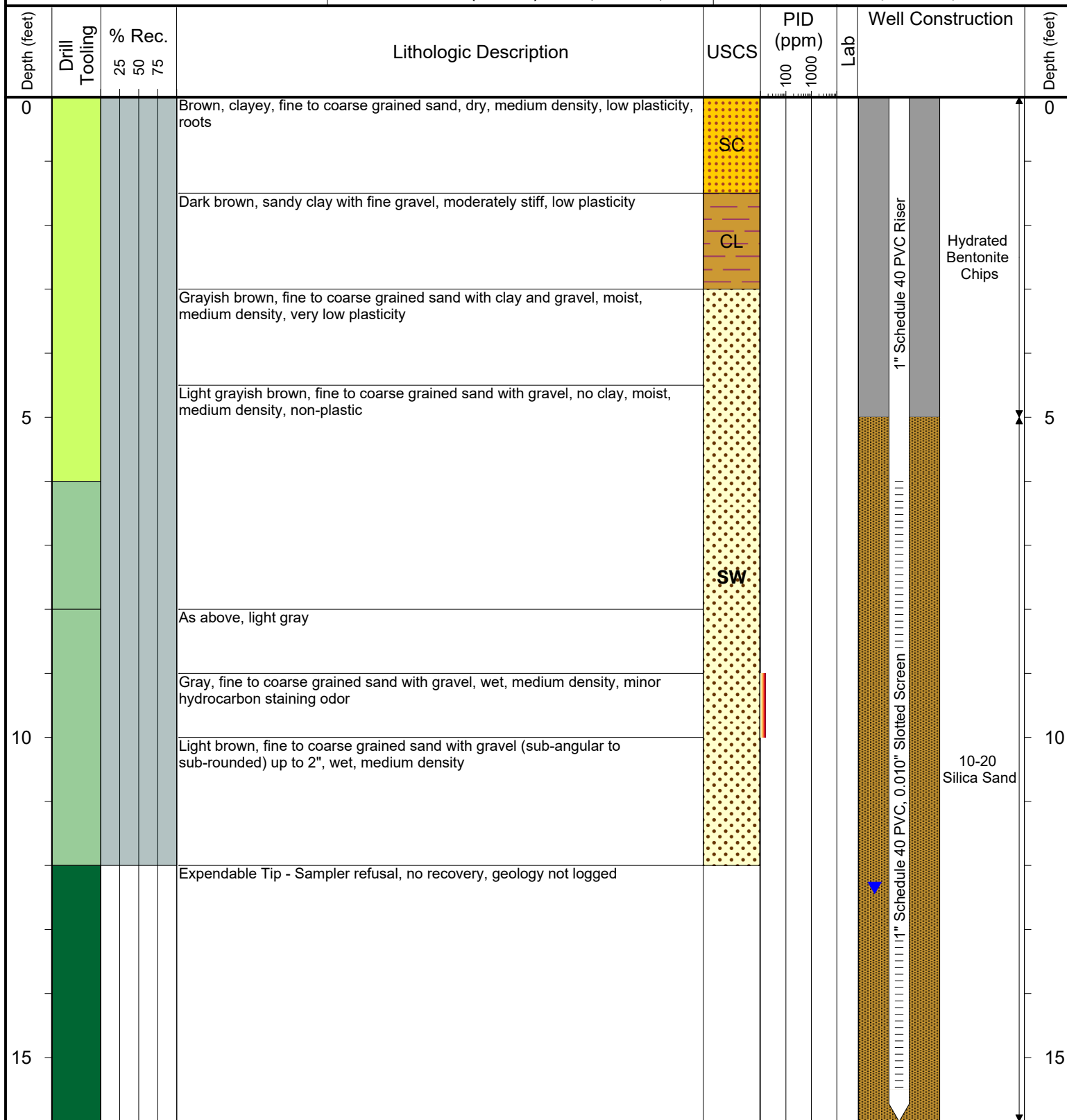
SURFACE COMPLETION: Stick up - 3.60'

NORTHING (CO STATE PLANE): 40.205716498

EASTING (CO STATE PLANE): -104.82662869

CASING ELEVATION (FT. AMSL): 4808.795

GROUND ELEVATION (FT. AMSL): 4805.195



Drilling / Sample Method:

- Macro-Core
- Expendable Well Tip
- Hydrovac
- Hand Auger

Laboratory Sample Types:

- Geotechnical Lab
- Analytical Chemistry Lab
- Geotechnical & Analytical Chemistry Lab



6899 Pecos Street, Unit C
Denver, Colorado 80221

CLIENT: Kerr-McGee Oil & Gas Onshore, LP

LOGGED BY: Eric Siegel, P. G.

PROJECT MANAGER: Robert Cornez

DRILLING CONTRACTOR: Tasman Geosciences

DRILLING EQUIPMENT: AMS - Powerprobe 9300 SK

DRILL BIT SIZE (INCHES): 2 3/8"

DATE STARTED - COMPLETED: 4/24/2017

TOTAL WELL DEPTH (FT. BGS): 16

DEPTH TO WATER (FT. BGS): 9.00 (7/11/2017) ▼

Platteville 63N66W19SWSW

BORING / WELL ID: BH16

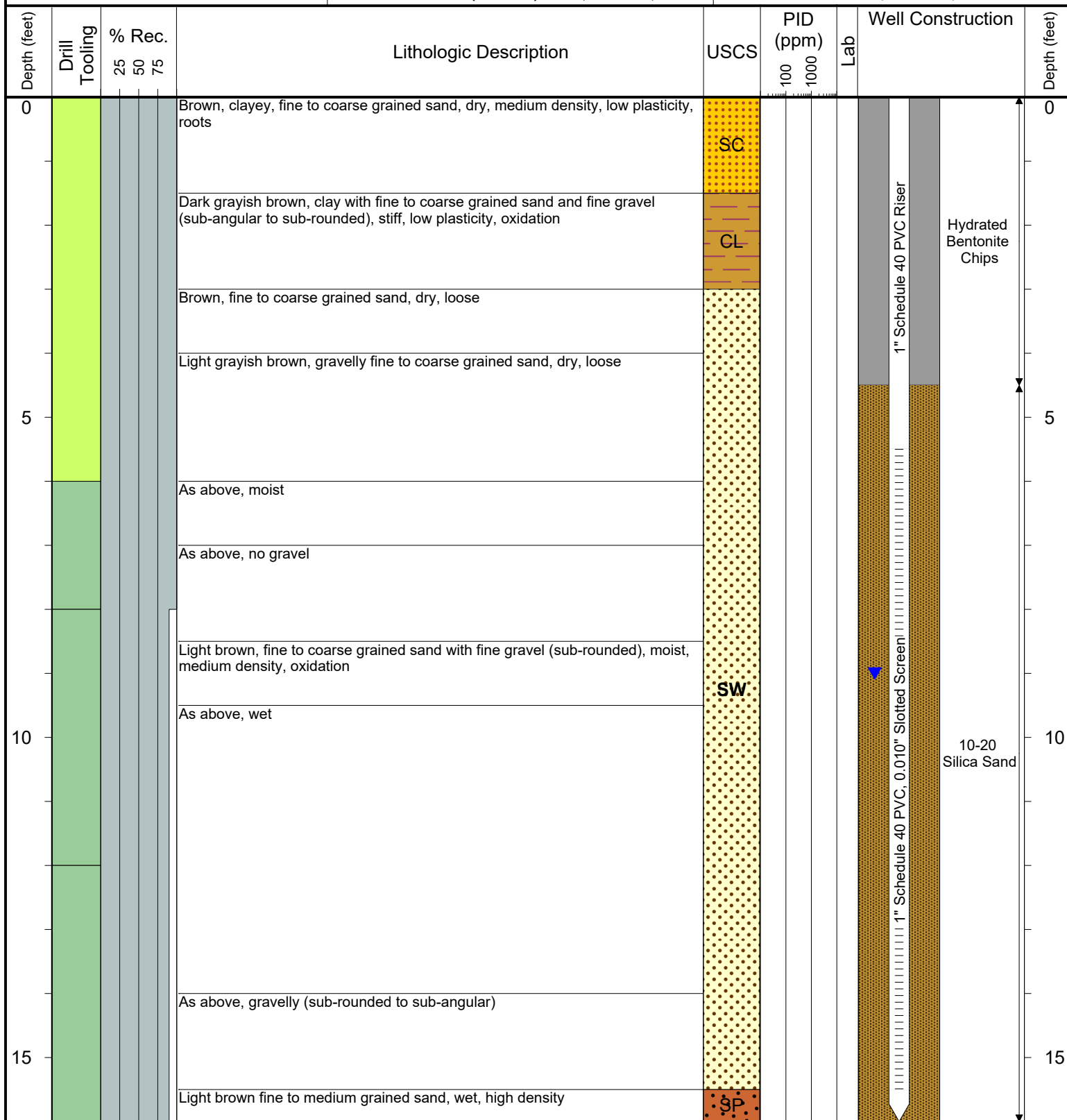
SURFACE COMPLETION: Flush Mount

NORTHING (CO STATE PLANE): 40.205645503

EASTING (CO STATE PLANE): -104.8265345

CASING ELEVATION (FT. AMSL): 4805.525

GROUND ELEVATION (FT. AMSL): 4805.775



Drilling / Sample Method:

Macro-Core
Expendable Well Tip

Hydrovac
Hand Auger

Laboratory Sample Types:

Geotechnical Lab
Analytical Chemistry Lab

Geotechnical & Analytical Chemistry Lab