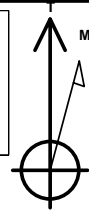


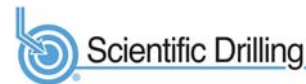
PROJECT DETAILS: Weld County, CO NAD 83

Geodetic System: US State Plane 1983
Datum: North American Datum 1983
Ellipsoid: GRS 1980
Zone: Colorado Northern Zone
System Datum: Mean Sea Level
Local North: True

Project: Weld County, CO NAD 83
Site: Anschutz Coffelt 5-61-35 SWNW Pad
Well: Anschutz Coffelt 5-61-34-2532BN
Wellbore: OH
Design: Plan 1



Azimuths to True North
Magnetic North: 8.23°



Magnetic Field
Strength: 52365.2nT
Dip Angle: 67.07°
Date: 8/28/2017
Model: HDGM

Plan: Plan 1 (Anschutz Coffelt 5-61-34-2532BN/OH)

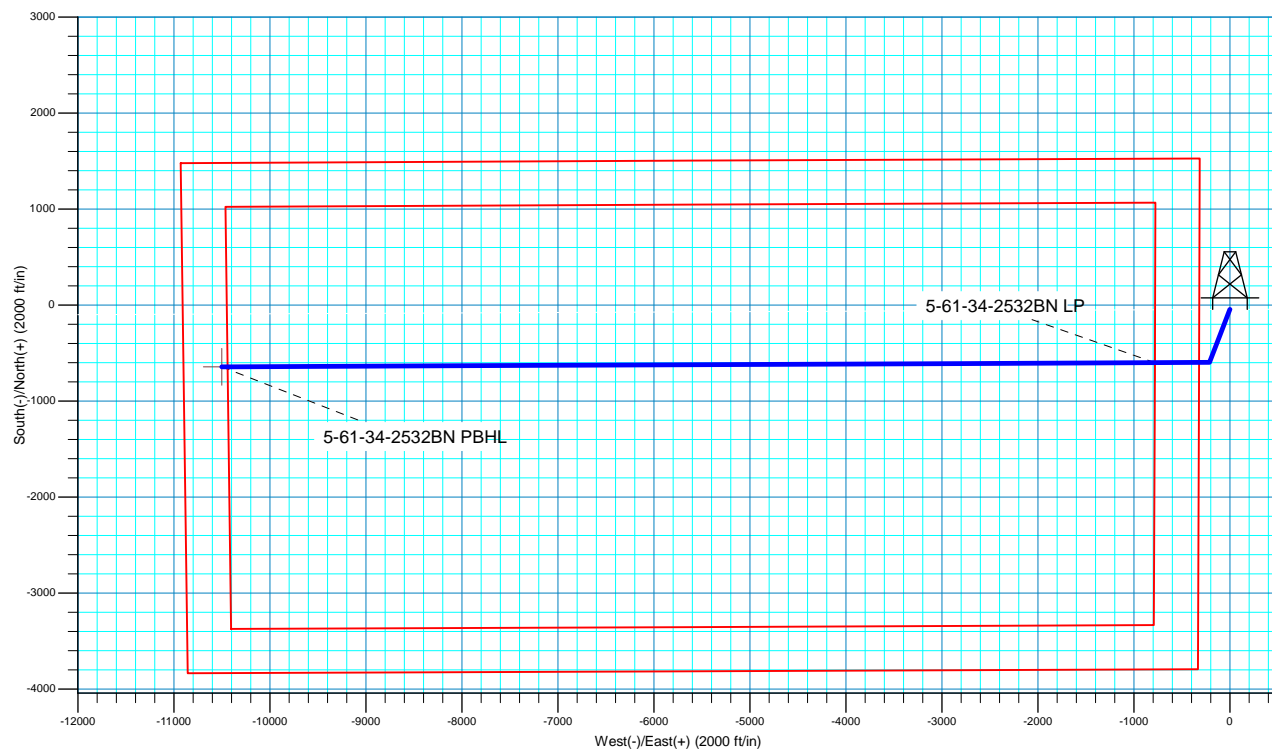
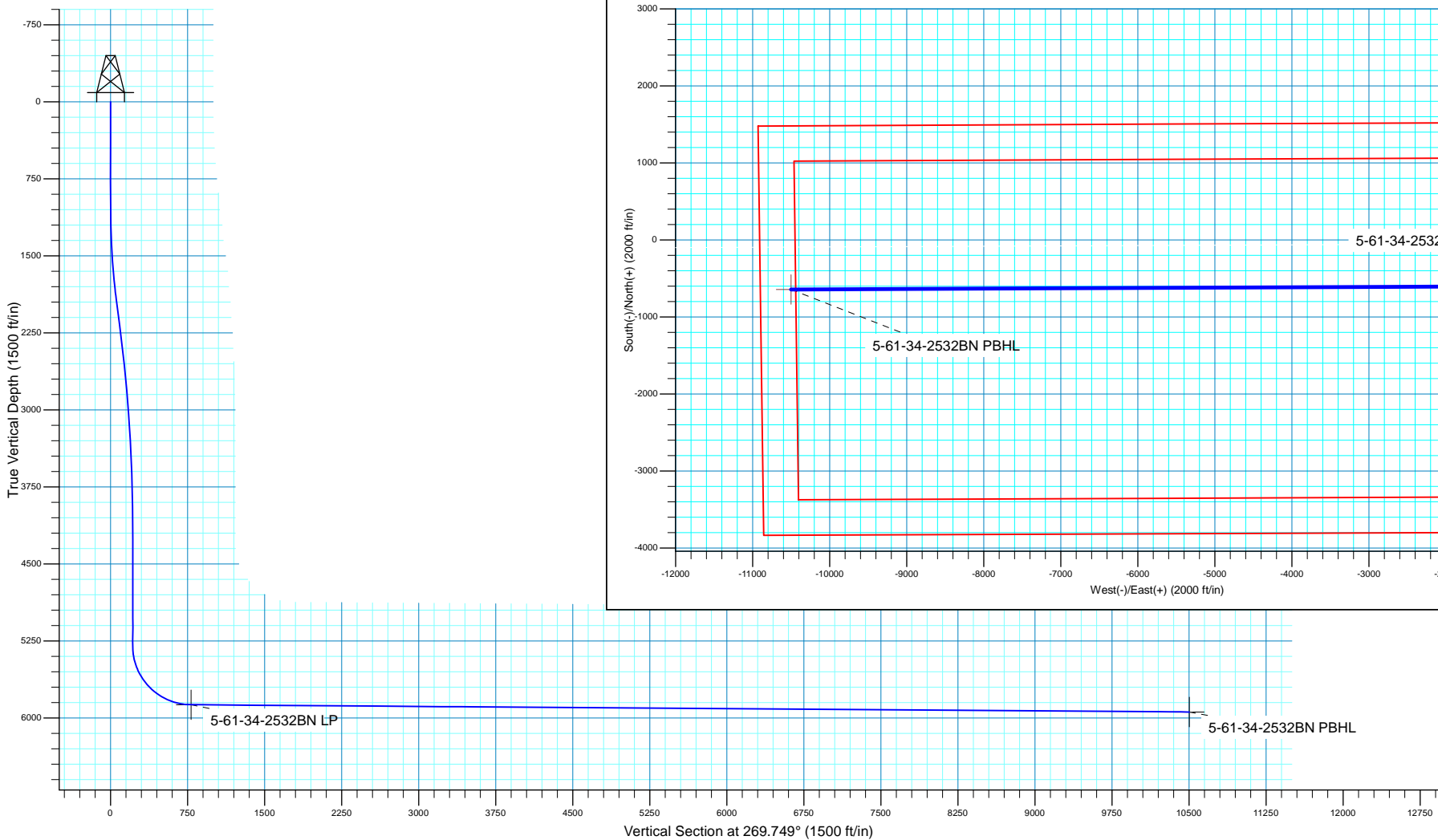
Created By: Seth Burstad Date: 8-28-2017

SECTION DETAILS

MD	Inc	Azi	TVD	+N/-S	+E/-W	Dleg	TFace	VSect
0.00	0.00	0.000	0.00	-45.55	0.00	0.00	0.00	0.00
1000.00	0.00	0.000	1000.00	-45.55	0.00	0.00	0.00	0.00
1973.48	19.47	201.115	1954.86	-198.37	-59.01	2.00	201.12	59.68
2274.21	19.47	201.115	2238.39	-291.87	-95.12	0.00	0.00	96.20
4221.18	0.00	0.000	4148.10	-597.50	-213.15	1.00	180.00	215.57
5371.14	0.00	0.000	5298.06	-597.50	-213.15	0.00	0.00	215.57
6267.01	89.59	269.749	5871.00	-600.00	-781.98	10.00	269.75	784.40
15986.33	89.59	269.749	5941.00	-642.57	-10500.95	0.00	0.00	10503.47

WELL DETAILS: Anschutz Coffelt 5-61-34-2532BN

+N/-S	+E/-W	GL 4491.6' & KB 20' @ 4511.60ft	4491.60	Longitude
Northing	Easting	Latitude		
-45.55	0.00	1376855.14	3366620.49	40° 21' 37.451 N
				104° 11' 3.689 W





Bill Barrett Corporation

Bill Barrett Corp.

Weld County, CO NAD 83

Anschutz Coffelt 5-61-35 SWNW Pad

Anschutz Coffelt 5-61-34-2532BN

OH

Plan: Plan 1

Standard Planning Report

28 August, 2017



Scientific Drilling

www.scientificdrilling.com



Database:	Casper District	Local Co-ordinate Reference:	Well Anschutz Coffelt 5-61-34-2532BN
Company:	Bill Barrett Corp.	TVD Reference:	GL 4491.6' & KB 20' @ 4511.60ft
Project:	Weld County, CO NAD 83	MD Reference:	GL 4491.6' & KB 20' @ 4511.60ft
Site:	Anschutz Coffelt 5-61-35 SWNW Pad	North Reference:	True
Well:	Anschutz Coffelt 5-61-34-2532BN	Survey Calculation Method:	Minimum Curvature
Wellbore:	OH		
Design:	Plan 1		

Project	Weld County, CO NAD 83		
Map System:	US State Plane 1983	System Datum:	Mean Sea Level
Geo Datum:	North American Datum 1983		
Map Zone:	Colorado Northern Zone		

Site						Anschutz Coffelt 5-61-35 SWNW Pad, Site Center : Anschutz Coffelt 5-61-34-0801B					
Site Position:				Northing:		1,376,900.69 usft		Latitude:		40° 21' 37.901 N	
From:		Lat/Long		Easting:		3,366,619.81 usft		Longitude:		104° 11' 3.689 W	
Position Uncertainty:		0.00 ft		Slot Radius:		13.200 in		Grid Convergence:		0.85	

Well	Anschutz Coffelt 5-61-34-2532BN, 1575' FNL 320' FWL Sec 35 T5N R61W					
Well Position	+N/-S	-45.55 ft	Northing:	1,376,855.15 usft	Latitude:	40° 21' 37.451 N
	+E/-W	0.00 ft	Easting:	3,366,620.49 usft	Longitude:	104° 11' 3.689 W
Position Uncertainty		0.00 ft	Wellhead Elevation:	0.00 ft	Ground Level:	4,491.60 ft

Wellbore	OH				
Magnetics	Model Name	Sample Date	Declination (°)	Dip Angle (°)	Field Strength (nT)
	HDGM	8/28/2017	8.23	67.07	52,365

Design	Plan 1			
Audit Notes:				
Version:	Phase:	PLAN	Tie On Depth:	0.00
Vertical Section:	Depth From (TVD) (ft)	+N/-S (ft)	+E/-W (ft)	Direction (°)
	0.00	0.00	0.00	269.749

Plan Sections										
Measured Depth (ft)	Inclination (°)	Azimuth (°)	Vertical Depth (ft)	+N/-S (ft)	+E/-W (ft)	Dogleg Rate (°/100ft)	Build Rate (°/100ft)	Turn Rate (°/100ft)	TFO (°)	Target
0.00	0.00	0.000	0.00	0.00	0.00	0.00	0.00	0.00	0.00	
1,000.00	0.00	0.000	1,000.00	0.00	0.00	0.00	0.00	0.00	0.00	
1,973.48	19.47	201.115	1,954.86	-152.82	-59.01	2.00	2.00	0.00	201.12	
2,274.21	19.47	201.115	2,238.39	-246.32	-95.12	0.00	0.00	0.00	0.00	
4,221.18	0.00	0.000	4,148.10	-551.95	-213.15	1.00	-1.00	0.00	180.00	
5,371.14	0.00	0.000	5,298.06	-551.95	-213.15	0.00	0.00	0.00	0.00	
6,267.01	89.59	269.749	5,871.00	-554.44	-781.98	10.00	10.00	-10.07	269.75	
15,986.33	89.59	269.749	5,941.00	-597.02	-10,500.95	0.00	0.00	0.00	0.00	5-61-34-2532BN PBT

Database:	Casper District	Local Co-ordinate Reference:	Well Anschutz Coffelt 5-61-34-2532BN
Company:	Bill Barrett Corp.	TVD Reference:	GL 4491.6' & KB 20' @ 4511.60ft
Project:	Weld County, CO NAD 83	MD Reference:	GL 4491.6' & KB 20' @ 4511.60ft
Site:	Anschutz Coffelt 5-61-35 SWNW Pad	North Reference:	True
Well:	Anschutz Coffelt 5-61-34-2532BN	Survey Calculation Method:	Minimum Curvature
Wellbore:	OH		
Design:	Plan 1		

Planned Survey									
Measured Depth (ft)	Inclination (°)	Azimuth (°)	Vertical Depth (ft)	+N/-S (ft)	+E/-W (ft)	Vertical Section (ft)	Dogleg Rate (°/100ft)	Build Rate (°/100ft)	Turn Rate (°/100ft)
0.00	0.00	0.000	0.00	0.00	0.00	0.00	0.00	0.00	0.00
100.00	0.00	0.000	100.00	0.00	0.00	0.00	0.00	0.00	0.00
200.00	0.00	0.000	200.00	0.00	0.00	0.00	0.00	0.00	0.00
300.00	0.00	0.000	300.00	0.00	0.00	0.00	0.00	0.00	0.00
400.00	0.00	0.000	400.00	0.00	0.00	0.00	0.00	0.00	0.00
500.00	0.00	0.000	500.00	0.00	0.00	0.00	0.00	0.00	0.00
600.00	0.00	0.000	600.00	0.00	0.00	0.00	0.00	0.00	0.00
700.00	0.00	0.000	700.00	0.00	0.00	0.00	0.00	0.00	0.00
800.00	0.00	0.000	800.00	0.00	0.00	0.00	0.00	0.00	0.00
900.00	0.00	0.000	900.00	0.00	0.00	0.00	0.00	0.00	0.00
1,000.00	0.00	0.000	1,000.00	0.00	0.00	0.00	0.00	0.00	0.00
Start Build 2.00									
1,100.00	2.00	201.115	1,099.98	-1.63	-0.63	0.64	2.00	2.00	0.00
1,200.00	4.00	201.115	1,199.84	-6.51	-2.51	2.54	2.00	2.00	0.00
1,300.00	6.00	201.115	1,299.45	-14.64	-5.65	5.72	2.00	2.00	0.00
1,400.00	8.00	201.115	1,398.70	-26.01	-10.04	10.16	2.00	2.00	0.00
1,500.00	10.00	201.115	1,497.47	-40.60	-15.68	15.86	2.00	2.00	0.00
1,600.00	12.00	201.115	1,595.62	-58.40	-22.55	22.81	2.00	2.00	0.00
1,700.00	14.00	201.115	1,693.06	-79.38	-30.66	31.00	2.00	2.00	0.00
1,800.00	16.00	201.115	1,789.64	-103.53	-39.98	40.43	2.00	2.00	0.00
1,900.00	18.00	201.115	1,885.27	-130.80	-50.51	51.08	2.00	2.00	0.00
1,973.48	19.47	201.115	1,954.86	-152.82	-59.01	59.68	2.00	2.00	0.00
Start 300.73 hold at 1973.48 MD									
2,000.00	19.47	201.115	1,979.86	-161.06	-62.20	62.90	0.00	0.00	0.00
2,100.00	19.47	201.115	2,074.14	-192.15	-74.20	75.05	0.00	0.00	0.00
2,200.00	19.47	201.115	2,168.42	-223.25	-86.21	87.19	0.00	0.00	0.00
2,274.21	19.47	201.115	2,238.39	-246.32	-95.12	96.20	0.00	0.00	0.00
Start Drop -1.00									
2,300.00	19.21	201.115	2,262.72	-254.29	-98.20	99.31	1.00	-1.00	0.00
2,400.00	18.21	201.115	2,357.43	-284.21	-109.76	111.00	1.00	-1.00	0.00
2,500.00	17.21	201.115	2,452.69	-312.59	-120.72	122.08	1.00	-1.00	0.00
2,600.00	16.21	201.115	2,548.47	-339.42	-131.08	132.56	1.00	-1.00	0.00
2,700.00	15.21	201.115	2,644.73	-364.68	-140.83	142.43	1.00	-1.00	0.00
2,800.00	14.21	201.115	2,741.45	-388.37	-149.98	151.68	1.00	-1.00	0.00
2,900.00	13.21	201.115	2,838.60	-410.48	-158.52	160.31	1.00	-1.00	0.00
3,000.00	12.21	201.115	2,936.15	-431.01	-166.45	168.33	1.00	-1.00	0.00
3,100.00	11.21	201.115	3,034.06	-449.94	-173.76	175.73	1.00	-1.00	0.00
3,200.00	10.21	201.115	3,132.32	-467.28	-180.45	182.50	1.00	-1.00	0.00
3,300.00	9.21	201.115	3,230.89	-483.02	-186.53	188.64	1.00	-1.00	0.00
3,400.00	8.21	201.115	3,329.73	-497.15	-191.99	194.16	1.00	-1.00	0.00
3,500.00	7.21	201.115	3,428.83	-509.67	-196.82	199.05	1.00	-1.00	0.00
3,600.00	6.21	201.115	3,528.14	-520.57	-201.03	203.31	1.00	-1.00	0.00
3,700.00	5.21	201.115	3,627.64	-529.85	-204.62	206.94	1.00	-1.00	0.00
3,800.00	4.21	201.115	3,727.30	-537.52	-207.58	209.93	1.00	-1.00	0.00
3,900.00	3.21	201.115	3,827.09	-543.55	-209.91	212.29	1.00	-1.00	0.00
4,000.00	2.21	201.115	3,926.98	-547.97	-211.61	214.01	1.00	-1.00	0.00
4,100.00	1.21	201.115	4,026.93	-550.75	-212.69	215.10	1.00	-1.00	0.00
4,200.00	0.21	201.115	4,126.92	-551.91	-213.14	215.55	1.00	-1.00	0.00
4,221.18	0.00	0.000	4,148.10	-551.95	-213.15	215.57	1.00	-1.00	0.00
Start 1149.96 hold at 4221.18 MD									
4,300.00	0.00	0.000	4,226.92	-551.95	-213.15	215.57	0.00	0.00	0.00
4,400.00	0.00	0.000	4,326.92	-551.95	-213.15	215.57	0.00	0.00	0.00
4,500.00	0.00	0.000	4,426.92	-551.95	-213.15	215.57	0.00	0.00	0.00
4,600.00	0.00	0.000	4,526.92	-551.95	-213.15	215.57	0.00	0.00	0.00

Database:	Casper District	Local Co-ordinate Reference:	Well Anschutz Coffelt 5-61-34-2532BN
Company:	Bill Barrett Corp.	TVD Reference:	GL 4491.6' & KB 20' @ 4511.60ft
Project:	Weld County, CO NAD 83	MD Reference:	GL 4491.6' & KB 20' @ 4511.60ft
Site:	Anschutz Coffelt 5-61-35 SWNW Pad	North Reference:	True
Well:	Anschutz Coffelt 5-61-34-2532BN	Survey Calculation Method:	Minimum Curvature
Wellbore:	OH		
Design:	Plan 1		

Planned Survey									
Measured Depth (ft)	Inclination (°)	Azimuth (°)	Vertical Depth (ft)	+N/-S (ft)	+E/-W (ft)	Vertical Section (ft)	Dogleg Rate (°/100ft)	Build Rate (°/100ft)	Turn Rate (°/100ft)
4,700.00	0.00	0.000	4,626.92	-551.95	-213.15	215.57	0.00	0.00	0.00
4,800.00	0.00	0.000	4,726.92	-551.95	-213.15	215.57	0.00	0.00	0.00
4,900.00	0.00	0.000	4,826.92	-551.95	-213.15	215.57	0.00	0.00	0.00
5,000.00	0.00	0.000	4,926.92	-551.95	-213.15	215.57	0.00	0.00	0.00
5,100.00	0.00	0.000	5,026.92	-551.95	-213.15	215.57	0.00	0.00	0.00
5,200.00	0.00	0.000	5,126.92	-551.95	-213.15	215.57	0.00	0.00	0.00
5,300.00	0.00	0.000	5,226.92	-551.95	-213.15	215.57	0.00	0.00	0.00
5,371.14	0.00	0.000	5,298.06	-551.95	-213.15	215.57	0.00	0.00	0.00
Start DLS 10.00 TFO 269.75									
5,400.00	2.89	269.749	5,326.91	-551.95	-213.88	216.29	10.00	10.00	0.00
5,500.00	12.89	269.749	5,425.84	-552.01	-227.58	230.00	10.00	10.00	0.00
5,600.00	22.89	269.749	5,520.89	-552.15	-258.25	260.67	10.00	10.00	0.00
5,700.00	32.89	269.749	5,609.16	-552.35	-304.97	307.38	10.00	10.00	0.00
5,800.00	42.89	269.749	5,687.98	-552.62	-366.30	368.71	10.00	10.00	0.00
5,900.00	52.89	269.749	5,754.96	-552.95	-440.38	442.80	10.00	10.00	0.00
6,000.00	62.89	269.749	5,808.05	-553.32	-524.97	527.39	10.00	10.00	0.00
6,100.00	72.89	269.749	5,845.65	-553.72	-617.50	619.92	10.00	10.00	0.00
6,200.00	82.89	269.749	5,866.61	-554.15	-715.15	717.57	10.00	10.00	0.00
6,267.01	89.59	269.749	5,871.00	-554.44	-781.98	784.40	10.00	10.00	0.00
Start 9719.32 hold at 6267.01 MD									
6,300.00	89.59	269.749	5,871.24	-554.59	-814.96	817.39	0.00	0.00	0.00
6,400.00	89.59	269.749	5,871.96	-555.02	-914.96	917.38	0.00	0.00	0.00
6,500.00	89.59	269.749	5,872.68	-555.46	-1,014.96	1,017.38	0.00	0.00	0.00
6,600.00	89.59	269.749	5,873.40	-555.90	-1,114.95	1,117.38	0.00	0.00	0.00
6,700.00	89.59	269.749	5,874.12	-556.34	-1,214.95	1,217.38	0.00	0.00	0.00
6,800.00	89.59	269.749	5,874.84	-556.78	-1,314.95	1,317.37	0.00	0.00	0.00
6,900.00	89.59	269.749	5,875.56	-557.22	-1,414.94	1,417.37	0.00	0.00	0.00
7,000.00	89.59	269.749	5,876.28	-557.65	-1,514.94	1,517.37	0.00	0.00	0.00
7,100.00	89.59	269.749	5,877.00	-558.09	-1,614.94	1,617.37	0.00	0.00	0.00
7,200.00	89.59	269.749	5,877.72	-558.53	-1,714.93	1,717.36	0.00	0.00	0.00
7,300.00	89.59	269.749	5,878.44	-558.97	-1,814.93	1,817.36	0.00	0.00	0.00
7,400.00	89.59	269.749	5,879.16	-559.41	-1,914.93	1,917.36	0.00	0.00	0.00
7,500.00	89.59	269.749	5,879.88	-559.84	-2,014.92	2,017.35	0.00	0.00	0.00
7,600.00	89.59	269.749	5,880.60	-560.28	-2,114.92	2,117.35	0.00	0.00	0.00
7,700.00	89.59	269.749	5,881.32	-560.72	-2,214.91	2,217.35	0.00	0.00	0.00
7,800.00	89.59	269.749	5,882.04	-561.16	-2,314.91	2,317.35	0.00	0.00	0.00
7,900.00	89.59	269.749	5,882.76	-561.60	-2,414.91	2,417.34	0.00	0.00	0.00
8,000.00	89.59	269.749	5,883.48	-562.03	-2,514.90	2,517.34	0.00	0.00	0.00
8,100.00	89.59	269.749	5,884.20	-562.47	-2,614.90	2,617.34	0.00	0.00	0.00
8,200.00	89.59	269.749	5,884.92	-562.91	-2,714.90	2,717.34	0.00	0.00	0.00
8,300.00	89.59	269.749	5,885.64	-563.35	-2,814.89	2,817.33	0.00	0.00	0.00
8,400.00	89.59	269.749	5,886.36	-563.79	-2,914.89	2,917.33	0.00	0.00	0.00
8,500.00	89.59	269.749	5,887.08	-564.22	-3,014.89	3,017.33	0.00	0.00	0.00
8,600.00	89.59	269.749	5,887.80	-564.66	-3,114.88	3,117.33	0.00	0.00	0.00
8,700.00	89.59	269.749	5,888.53	-565.10	-3,214.88	3,217.32	0.00	0.00	0.00
8,800.00	89.59	269.749	5,889.25	-565.54	-3,314.88	3,317.32	0.00	0.00	0.00
8,900.00	89.59	269.749	5,889.97	-565.98	-3,414.87	3,417.32	0.00	0.00	0.00
9,000.00	89.59	269.749	5,890.69	-566.41	-3,514.87	3,517.32	0.00	0.00	0.00
9,100.00	89.59	269.749	5,891.41	-566.85	-3,614.86	3,617.31	0.00	0.00	0.00
9,200.00	89.59	269.749	5,892.13	-567.29	-3,714.86	3,717.31	0.00	0.00	0.00
9,300.00	89.59	269.749	5,892.85	-567.73	-3,814.86	3,817.31	0.00	0.00	0.00
9,400.00	89.59	269.749	5,893.57	-568.17	-3,914.85	3,917.31	0.00	0.00	0.00
9,500.00	89.59	269.749	5,894.29	-568.61	-4,014.85	4,017.30	0.00	0.00	0.00

Database:	Casper District	Local Co-ordinate Reference:	Well Anschutz Coffelt 5-61-34-2532BN
Company:	Bill Barrett Corp.	TVD Reference:	GL 4491.6' & KB 20' @ 4511.60ft
Project:	Weld County, CO NAD 83	MD Reference:	GL 4491.6' & KB 20' @ 4511.60ft
Site:	Anschutz Coffelt 5-61-35 SWNW Pad	North Reference:	True
Well:	Anschutz Coffelt 5-61-34-2532BN	Survey Calculation Method:	Minimum Curvature
Wellbore:	OH		
Design:	Plan 1		

Planned Survey									
Measured Depth (ft)	Inclination (°)	Azimuth (°)	Vertical Depth (ft)	+N/-S (ft)	+E/-W (ft)	Vertical Section (ft)	Dogleg Rate (°/100ft)	Build Rate (°/100ft)	Turn Rate (°/100ft)
9,600.00	89.59	269.749	5,895.01	-569.04	-4,114.85	4,117.30	0.00	0.00	0.00
9,700.00	89.59	269.749	5,895.73	-569.48	-4,214.84	4,217.30	0.00	0.00	0.00
9,800.00	89.59	269.749	5,896.45	-569.92	-4,314.84	4,317.30	0.00	0.00	0.00
9,900.00	89.59	269.749	5,897.17	-570.36	-4,414.84	4,417.29	0.00	0.00	0.00
10,000.00	89.59	269.749	5,897.89	-570.80	-4,514.83	4,517.29	0.00	0.00	0.00
10,100.00	89.59	269.749	5,898.61	-571.23	-4,614.83	4,617.29	0.00	0.00	0.00
10,200.00	89.59	269.749	5,899.33	-571.67	-4,714.83	4,717.28	0.00	0.00	0.00
10,300.00	89.59	269.749	5,900.05	-572.11	-4,814.82	4,817.28	0.00	0.00	0.00
10,400.00	89.59	269.749	5,900.77	-572.55	-4,914.82	4,917.28	0.00	0.00	0.00
10,500.00	89.59	269.749	5,901.49	-572.99	-5,014.82	5,017.28	0.00	0.00	0.00
10,600.00	89.59	269.749	5,902.21	-573.42	-5,114.81	5,117.27	0.00	0.00	0.00
10,700.00	89.59	269.749	5,902.93	-573.86	-5,214.81	5,217.27	0.00	0.00	0.00
10,800.00	89.59	269.749	5,903.65	-574.30	-5,314.80	5,317.27	0.00	0.00	0.00
10,900.00	89.59	269.749	5,904.37	-574.74	-5,414.80	5,417.27	0.00	0.00	0.00
11,000.00	89.59	269.749	5,905.09	-575.18	-5,514.80	5,517.26	0.00	0.00	0.00
11,100.00	89.59	269.749	5,905.81	-575.61	-5,614.79	5,617.26	0.00	0.00	0.00
11,200.00	89.59	269.749	5,906.53	-576.05	-5,714.79	5,717.26	0.00	0.00	0.00
11,300.00	89.59	269.749	5,907.25	-576.49	-5,814.79	5,817.26	0.00	0.00	0.00
11,400.00	89.59	269.749	5,907.97	-576.93	-5,914.78	5,917.25	0.00	0.00	0.00
11,500.00	89.59	269.749	5,908.69	-577.37	-6,014.78	6,017.25	0.00	0.00	0.00
11,600.00	89.59	269.749	5,909.41	-577.81	-6,114.78	6,117.25	0.00	0.00	0.00
11,700.00	89.59	269.749	5,910.13	-578.24	-6,214.77	6,217.25	0.00	0.00	0.00
11,800.00	89.59	269.749	5,910.85	-578.68	-6,314.77	6,317.24	0.00	0.00	0.00
11,900.00	89.59	269.749	5,911.57	-579.12	-6,414.77	6,417.24	0.00	0.00	0.00
12,000.00	89.59	269.749	5,912.29	-579.56	-6,514.76	6,517.24	0.00	0.00	0.00
12,100.00	89.59	269.749	5,913.01	-580.00	-6,614.76	6,617.24	0.00	0.00	0.00
12,200.00	89.59	269.749	5,913.73	-580.43	-6,714.75	6,717.23	0.00	0.00	0.00
12,300.00	89.59	269.749	5,914.45	-580.87	-6,814.75	6,817.23	0.00	0.00	0.00
12,400.00	89.59	269.749	5,915.17	-581.31	-6,914.75	6,917.23	0.00	0.00	0.00
12,500.00	89.59	269.749	5,915.89	-581.75	-7,014.74	7,017.23	0.00	0.00	0.00
12,600.00	89.59	269.749	5,916.61	-582.19	-7,114.74	7,117.22	0.00	0.00	0.00
12,700.00	89.59	269.749	5,917.33	-582.62	-7,214.74	7,217.22	0.00	0.00	0.00
12,800.00	89.59	269.749	5,918.05	-583.06	-7,314.73	7,317.22	0.00	0.00	0.00
12,900.00	89.59	269.749	5,918.77	-583.50	-7,414.73	7,417.21	0.00	0.00	0.00
13,000.00	89.59	269.749	5,919.49	-583.94	-7,514.73	7,517.21	0.00	0.00	0.00
13,100.00	89.59	269.749	5,920.21	-584.38	-7,614.72	7,617.21	0.00	0.00	0.00
13,200.00	89.59	269.749	5,920.93	-584.81	-7,714.72	7,717.21	0.00	0.00	0.00
13,300.00	89.59	269.749	5,921.65	-585.25	-7,814.72	7,817.20	0.00	0.00	0.00
13,400.00	89.59	269.749	5,922.37	-585.69	-7,914.71	7,917.20	0.00	0.00	0.00
13,500.00	89.59	269.749	5,923.09	-586.13	-8,014.71	8,017.20	0.00	0.00	0.00
13,600.00	89.59	269.749	5,923.81	-586.57	-8,114.70	8,117.20	0.00	0.00	0.00
13,700.00	89.59	269.749	5,924.53	-587.00	-8,214.70	8,217.19	0.00	0.00	0.00
13,800.00	89.59	269.749	5,925.25	-587.44	-8,314.70	8,317.19	0.00	0.00	0.00
13,900.00	89.59	269.749	5,925.97	-587.88	-8,414.69	8,417.19	0.00	0.00	0.00
14,000.00	89.59	269.749	5,926.69	-588.32	-8,514.69	8,517.19	0.00	0.00	0.00
14,100.00	89.59	269.749	5,927.42	-588.76	-8,614.69	8,617.18	0.00	0.00	0.00
14,200.00	89.59	269.749	5,928.14	-589.20	-8,714.68	8,717.18	0.00	0.00	0.00
14,300.00	89.59	269.749	5,928.86	-589.63	-8,814.68	8,817.18	0.00	0.00	0.00
14,400.00	89.59	269.749	5,929.58	-590.07	-8,914.68	8,917.18	0.00	0.00	0.00
14,500.00	89.59	269.749	5,930.30	-590.51	-9,014.67	9,017.17	0.00	0.00	0.00
14,600.00	89.59	269.749	5,931.02	-590.95	-9,114.67	9,117.17	0.00	0.00	0.00
14,700.00	89.59	269.749	5,931.74	-591.39	-9,214.67	9,217.17	0.00	0.00	0.00
14,800.00	89.59	269.749	5,932.46	-591.82	-9,314.66	9,317.17	0.00	0.00	0.00
14,900.00	89.59	269.749	5,933.18	-592.26	-9,414.66	9,417.16	0.00	0.00	0.00

Database:	Casper District	Local Co-ordinate Reference:	Well Anschutz Coffelt 5-61-34-2532BN
Company:	Bill Barrett Corp.	TVD Reference:	GL 4491.6' & KB 20' @ 4511.60ft
Project:	Weld County, CO NAD 83	MD Reference:	GL 4491.6' & KB 20' @ 4511.60ft
Site:	Anschutz Coffelt 5-61-35 SWNW Pad	North Reference:	True
Well:	Anschutz Coffelt 5-61-34-2532BN	Survey Calculation Method:	Minimum Curvature
Wellbore:	OH		
Design:	Plan 1		

Planned Survey									
Measured Depth (ft)	Inclination (°)	Azimuth (°)	Vertical Depth (ft)	+N/-S (ft)	+E/-W (ft)	Vertical Section (ft)	Dogleg Rate (°/100ft)	Build Rate (°/100ft)	Turn Rate (°/100ft)
15,000.00	89.59	269.749	5,933.90	-592.70	-9,514.66	9,517.16	0.00	0.00	0.00
15,100.00	89.59	269.749	5,934.62	-593.14	-9,614.65	9,617.16	0.00	0.00	0.00
15,200.00	89.59	269.749	5,935.34	-593.58	-9,714.65	9,717.16	0.00	0.00	0.00
15,300.00	89.59	269.749	5,936.06	-594.01	-9,814.64	9,817.15	0.00	0.00	0.00
15,400.00	89.59	269.749	5,936.78	-594.45	-9,914.64	9,917.15	0.00	0.00	0.00
15,500.00	89.59	269.749	5,937.50	-594.89	-10,014.64	10,017.15	0.00	0.00	0.00
15,600.00	89.59	269.749	5,938.22	-595.33	-10,114.63	10,117.14	0.00	0.00	0.00
15,700.00	89.59	269.749	5,938.94	-595.77	-10,214.63	10,217.14	0.00	0.00	0.00
15,800.00	89.59	269.749	5,939.66	-596.20	-10,314.63	10,317.14	0.00	0.00	0.00
15,900.00	89.59	269.749	5,940.38	-596.64	-10,414.62	10,417.14	0.00	0.00	0.00
15,986.33	89.59	269.749	5,941.00	-597.02	-10,500.95	10,503.47	0.00	0.00	0.00
TD at 15986.33									

Design Targets									
Target Name	Dip Angle (°)	Dip Dir. (°)	TVD (ft)	+N/-S (ft)	+E/-W (ft)	Northing (usft)	Easting (usft)	Latitude	Longitude
- hit/miss target									
- Shape									
5-61-34-2532BN LP	0.00	0.000	5,871.00	-554.43	-781.98	1,376,289.18	3,365,846.82	40° 21' 31.972 N	104° 11' 13.790 W
- plan misses target center by 0.01ft at 6267.01ft MD (5871.00 TVD, -554.44 N, -781.98 E)									
- Point									
5-61-34-2532BN PBHL	0.00	0.000	5,941.00	-597.02	-10,500.95	1,376,102.40	3,356,129.57	40° 21' 31.529 N	104° 13' 19.340 W
- plan hits target center									
- Point									

Plan Annotations					
Measured Depth (ft)	Vertical Depth (ft)	Local Coordinates			
		+N/-S (ft)	+E/-W (ft)	Comment	
1,000.00	1,000.00	0.00	0.00	Start Build 2.00	
1,973.48	1,954.86	-152.82	-59.01	Start 300.73 hold at 1973.48 MD	
2,274.21	2,238.39	-246.32	-95.12	Start Drop -1.00	
4,221.18	4,148.10	-551.95	-213.15	Start 1149.96 hold at 4221.18 MD	
5,371.14	5,298.06	-551.95	-213.15	Start DLS 10.00 TFO 269.75	
6,267.01	5,871.00	-554.44	-781.98	Start 9719.32 hold at 6267.01 MD	
15,986.33	5,941.00	-597.02	-10,500.95	TD at 15986.33	