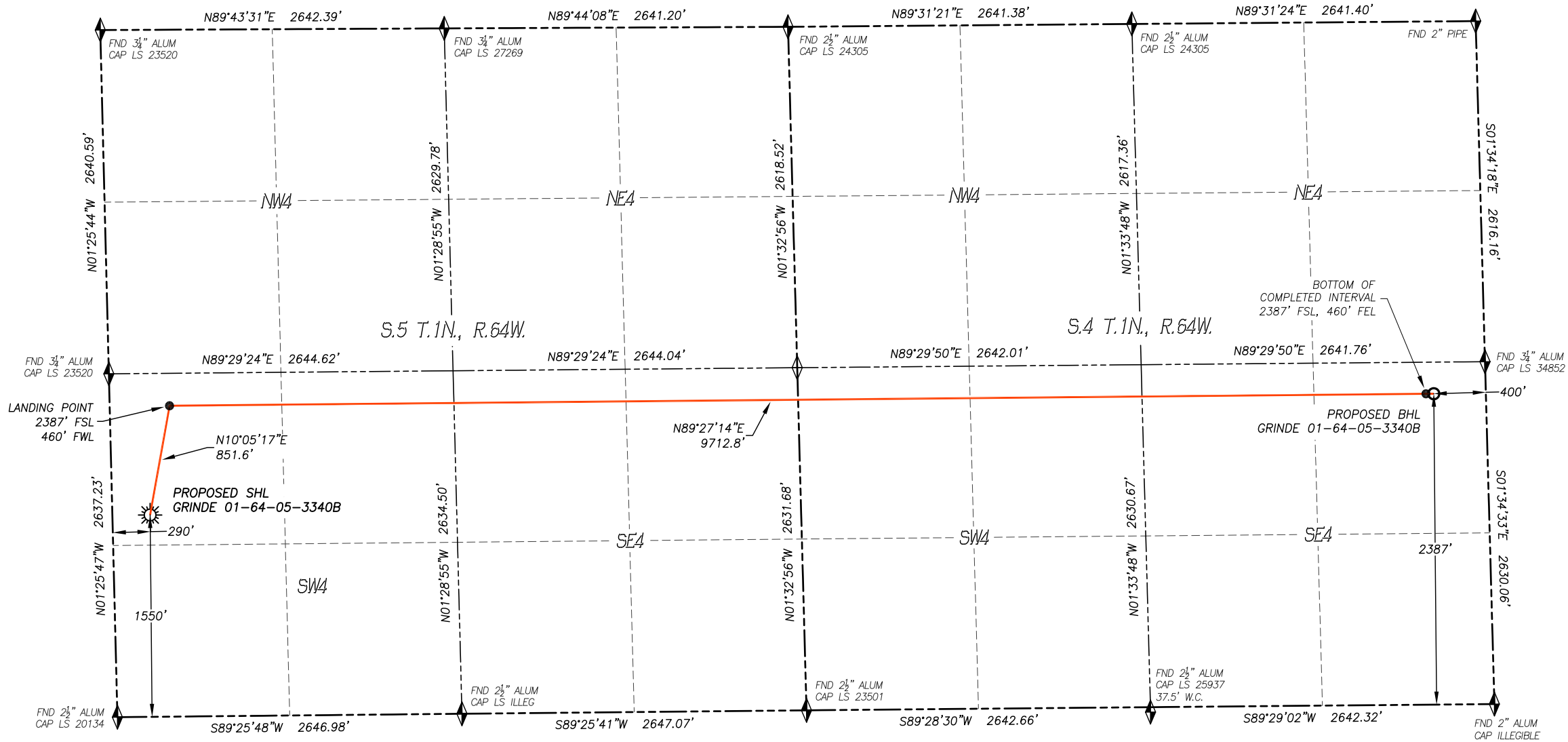


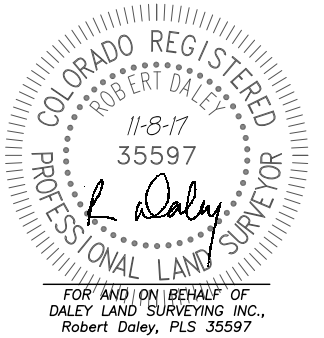
WELL LOCATION CERTIFICATE
GRINDE 01-64-05-3340B

SECTION 5, TOWNSHIP 1 NORTH, RANGE 64 WEST OF THE 6TH P.M., WELD COUNTY



IN ACCORDANCE WITH A REQUEST FROM BILL BARRETT CORP., DALEY LAND SURVEYING, INC. HAS DETERMINED THE SURFACE LOCATION OF THE GRINDE 01-64-05-3340B WELL TO BE 1550' FSL, 290' FWL, AS MEASURED AT NINETY (90) DEGREES FROM THE SECTION LINES OF SECTION 5, TOWNSHIP 1 NORTH, RANGE 64 WEST AND THE BOTTOM HOLE LOCATION TO BE 2387' FSL, 400' FEL, AS MEASURED AT NINETY (90) DEGREES FROM THE SECTION LINES OF SECTION 4, TOWNSHIP 1 NORTH, RANGE 64 WEST, OF THE 6TH PRINCIPAL MERIDIAN, WELD COUNTY, COLORADO.

I HEREBY STATE THAT THIS WELL LOCATION CERTIFICATE WAS PREPARED BY ME OR UNDER MY DIRECT SUPERVISION, THAT THE WORK WAS COMPLETED ON 11/2/2017 FOR AND ON BEHALF OF BILL BARRETT CORP., AND THAT THIS MAP DOES NOT REPRESENT A BOUNDARY SURVEY, IT IS NOT A LAND SURVEY PLAT OR AN IMPROVEMENT SURVEY PLAT AND IT IS NOT TO BE RELIED UPON FOR THE ESTABLISHMENT OF FENCE, BUILDING OR OTHER FUTURE IMPROVEMENT LINES.



NOTES:

- BEARINGS FOR THIS MAP ARE ASSUMED AND BASED UPON GPS OBSERVATIONS MADE BETWEEN MONUMENTS LOCATED AT THE NORTH QUARTER CORNER AND NORTHEAST CORNER OF SECTION 5, T.1N., R.64W.
- HORIZONTAL DATUM IS NAD83.
- VERTICAL DATUM IS NAVD88 AND ORIGINATES FROM THE LOCAL C.O.R.S. NETWORK, UTILIZING THE GEOID12A MODEL.
- SEE LOCATION DRAWING FOR VISIBLE IMPROVEMENTS WITHIN 500' OF PROPOSED DISTURBED AREA.
- SURFACE USE: AGRICULTURAL.
- INST. OPERATOR: SCOTT ESTABROOKS.

NEAREST CULTURAL ITEMS:

BUILDING: 399'± SW
BUILDING UNIT: 675'± SW
HIGH OCC. BLD. UNIT: 5280'±
DES. OUTSIDE ACTIVITY AREA: 5280'±
PUBLIC ROAD: 277'± W
ABOVE GROUND UTILITY: 264'± W
RAILROAD: 5280'±
PROPERTY LINE: 290'± W

NAD 83 LATITUDE AND LONGITUDE

SURFACE LOCATION:

LATITUDE: N40.07750°
LONGITUDE: W104.58322°
ELEV: 5030'
PDOP: 1.3
QTR/QTR: NW4/SW4

LANDING POINT:

LATITUDE: N40.07980°
LONGITUDE: W104.58266°
BOTTOM COMPLETED INT.:
LATITUDE: N40.07977°
LONGITUDE: W104.54817°

BOTTOM HOLE:

LATITUDE: N40.07977°
LONGITUDE: W104.54796°

LEGEND

- FOUND MONUMENT AS DESCRIBED
- PROPOSED WELL
- EXISTING WELL
- BOTTOM HOLE
- ABANDONED WELL
- CALCULATED POSITION

