

T6S, R97W, 6th P.M.

Caerus Oil & Gas LLC

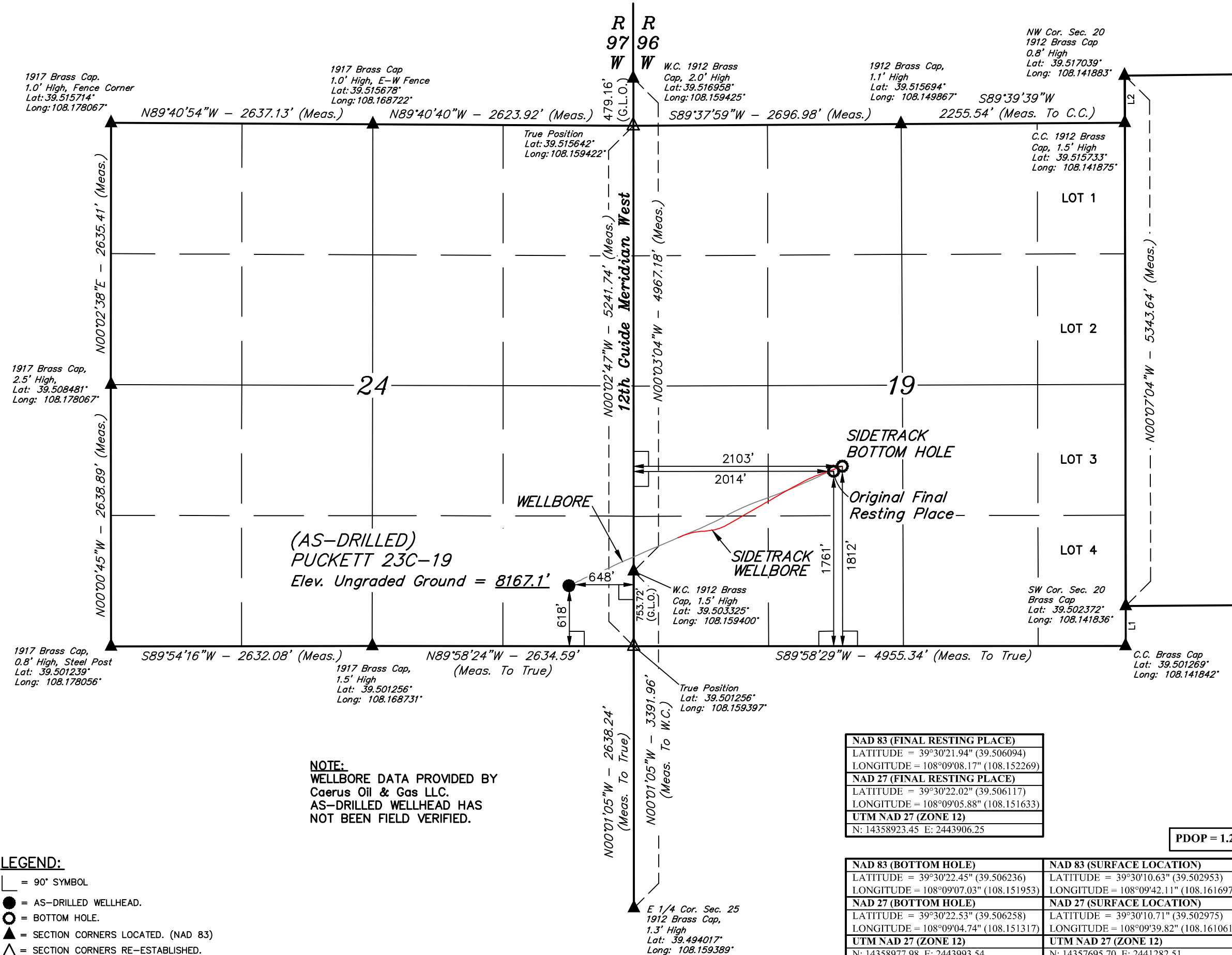
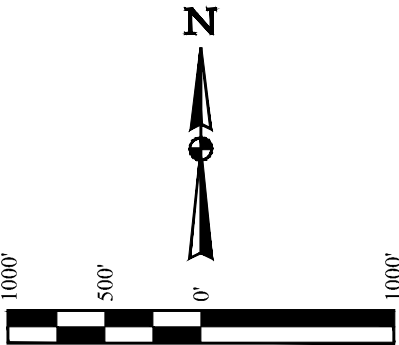
(AS-DRILLED) PUCKETT 23C-19
API No. 05-045-23200-0000
SE 1/4 SE 1/4, SECTION 24, T6S, R97W, 6th P.M.
GARFIELD COUNTY, COLORADO

BASIS OF BEARINGS

BASIS OF BEARINGS IS A G.P.S. OBSERVATION

BASIS OF ELEVATION

SPOT ELEVATION AT THE NORTHWEST CORNER OF SECTION 30, T5S, R95W, 6th P.M., TAKEN FROM THE FORKED GULCH, QUADRANGLE, COLORADO, GARFIELD COUNTY, 7.5 MINUTE QUAD. (TOPOGRAPHIC MAP) PUBLISHED BY THE UNITED STATES DEPARTMENT OF THE INTERIOR, GEOLOGICAL SURVEY. SAID ELEVATION IS MARKED AS BEING 5966 FEET.



LEGEND:

- 90° SYMBOL
- AS-DRILLED WELLHEAD.
- BOTTOM HOLE.
- SECTION CORNERS LOCATED. (NAD 83)
- SECTION CORNERS RE-ESTABLISHED. (Not Set on Ground.) (NAD 83)

NOTE:
WELLBORE DATA PROVIDED BY
Caerus Oil & Gas LLC.
AS-DRILLED WELLHEAD HAS
NOT BEEN FIELD VERIFIED.

NAD 83 (FINAL RESTING PLACE)
LATITUDE = 39°30'21.94" (39.506094)
LONGITUDE = 108°09'08.17" (108.152269)
NAD 27 (FINAL RESTING PLACE)
LATITUDE = 39°30'22.02" (39.506117)
LONGITUDE = 108°09'05.88" (108.151633)
UTM NAD 27 (ZONE 12)
N: 14358923.45 E: 2443906.25

PDOP = 1.2

NAD 83 (BOTTOM HOLE)	NAD 83 (SURFACE LOCATION)
LATITUDE = 39°30'22.45" (39.506236)	LATITUDE = 39°30'10.63" (39.502953)
LONGITUDE = 108°09'07.03" (108.151953)	LONGITUDE = 108°09'42.11" (108.161697)
NAD 27 (BOTTOM HOLE)	NAD 27 (SURFACE LOCATION)
LATITUDE = 39°30'22.53" (39.506258)	LATITUDE = 39°30'10.71" (39.502975)
LONGITUDE = 108°09'04.74" (108.151317)	LONGITUDE = 108°09'39.82" (108.161061)
UTM NAD 27 (ZONE 12)	UTM NAD 27 (ZONE 12)
N: 14358977.98 E: 2443993.54	N: 14357695.70 E: 2441282.51

CERTIFICATE

THIS IS TO CERTIFY THAT THE ABOVE MAP WAS PREPARED FROM FIELD NOTES OF ACTUAL SURVEYS MADE BY ME OR UNDER MY SUPERVISION AND THAT THE LOCATION HAS BEEN MARKED ON THE GROUND AS SHOWN ON THE PLAT AND THAT THE SAME ARE TRUE AND CORRECT TO THE BEST OF MY KNOWLEDGE AND BELIEF.

REGISTERED LAND SURVEYOR
REGISTRATION NO. 38124
STATE OF COLORADO 02-14-18



UELS, LLC
Corporate Office * 85 South 200 East
Vernal, UT 84078 * (435) 789-1017

SURVEYED BY	DATE	REVISED BY	DATE
BRIAN BAKER, B.B.	12-14-15		
DRAWN BY	DATE		
C.D.L.	02-14-18		
SCALE	1" = 1000'		

AS-DRILLED WELL LOCATION PLAT