

# HALLIBURTON

iCem<sup>®</sup> Service

## **SYNERGY RESOURCES CORPORATION**

Date: Thursday, September 29, 2016

### **SRC Williams 12-4-5NM-C**

Surface

Job Date: Thursday, September 22, 2016

Sincerely,

**Justin Lansdale**

## Legal Notice

---

### Warning Disclaimer

Although the information contained in this report is based on sound engineering practices, the copyright owner(s) does (do) not accept any responsibility whatsoever, in negligence or otherwise, for any loss or damage arising from the possession or use of the report whether in terms of correctness or otherwise. The application, therefore, by the user of this report or any part thereof, is solely at the user's own risk.

### Limitations of Liability

Except as expressly set forth herein, there are no representations or warranties by Halliburton, express or implied, including implied warranties of merchantability and/or fitness for a particular purpose. In no event will Halliburton or its suppliers be liable for consequential, incidental, special, punitive or exemplary damages (including, without limitation, loss of data, profits, use of hardware, or software). Customer accepts full responsibility for any investment made based on results from the Software. Any interpretations, analyses or modeling of any data, including, but not limited to Customer data, and any recommendation or decisions based upon such interpretations, analyses or modeling are opinions based upon inferences from measurements and empirical relationships and assumptions, which inferences and assumptions are not infallible, and with respect to which professional may differ. Accordingly, Halliburton cannot and does not warrant the accuracy, correctness or completeness of any such interpretation, recommendation, modeling or other products of the Software Product. As such, any interpretation, recommendation or modeling resulting from the Software for the purpose of any drilling, well treatment, production or financial decision will be at the sole risk of Customer. Under no circumstances will Halliburton or its suppliers be liable for any damages.

Table of Contents

---

Cementing Job Summary ..... 4

    Executive Summary .....4

Real-Time Job Summary ..... 7

    Job Event Log.....7

## 1.0 Cementing Job Summary

---

### 1.1 Executive Summary

---

Halliburton appreciates the opportunity to perform the cementing services on the **SRC Williams 12-4-5NM-C** cement **Surface** casing job. A pre-job safety meeting was held before the job where details of the job were discussed, potential safety hazards were reviewed, and environmental compliance procedures were outlined.

25 bbls of cement to surface

Halliburton maintains a continuous quality improvement process and appreciates any comments or suggestions that you may have. Halliburton again thanks you for the opportunity to perform service work on this well. We hope to be your solutions provider for future projects.

Respectfully,

**Halliburton [Fort Lupton]**

HALLIBURTON

*Cementing Job Summary**The Road to Excellence Starts with Safety*

|   |                                      |                            |                           |
|---|--------------------------------------|----------------------------|---------------------------|
| Sold To #: 359915                                 | Ship To #: 3735435                   | Quote #:                   | Sales Order #: 0903542810 |
| Customer: SYNERGY RESOURCES CORPORATION           | Customer Rep: STEVE WILSON           |                            |                           |
| Well Name: SRC WILLIAMS                           | Well #: 12-4-5NM-C                   | API/UWI #: 05-123-43167-00 |                           |
| Field: WATTENBERG                                 | City (SAP): JOHNSTOWN                | County/Parish: WELD        | State: COLORADO           |
| Legal Description: NE NW-4-4N-67W-1100FNL-2423FWL |                                      |                            |                           |
| Contractor: PRECISION DRLG                        | Rig/Platform Name/Num: PRECISION 462 |                            |                           |
| Job BOM: 7521                                     |                                      |                            |                           |
| Well Type: HORIZONTAL OIL                         |                                      |                            |                           |
| Sales Person: HALAMERICA\HX38199                  | Srvc Supervisor: Jesse Slaughter     |                            |                           |
| Job   |                                      |                            |                           |

|                        |        |  |                   |
|------------------------|--------|--|-------------------|
| Formation Name         |        |  |                   |
| Formation Depth (MD)   | Top    |  | Bottom            |
| Form Type              |        |  | BHST              |
| Job depth MD           | 1744ft |  | Job Depth TVD     |
| Water Depth            |        |  | Wk Ht Above Floor |
| Perforation Depth (MD) | From   |  | To                |

| Well Data         |            |         |        |               |        |       |           |              |            |               |
|-------------------|------------|---------|--------|---------------|--------|-------|-----------|--------------|------------|---------------|
| Description       | New / Used | Size in | ID in  | Weight lbm/ft | Thread | Grade | Top MD ft | Bottom MD ft | Top TVD ft | Bottom TVD ft |
| Casing            | 3          | 16      | 15.376 | 55            |        |       | 0         | 40           | 0          | 40            |
| Casing            |            | 9.625   | 8.921  | 36            |        |       | 0         | 1744         | 0          | 0             |
| Open Hole Section |            |         | 13.5   |               |        |       | 40        | 1760         | 0          | 1760          |

| Tools and Accessories |         |     |      |          |  |                |         |     |             |
|-----------------------|---------|-----|------|----------|--|----------------|---------|-----|-------------|
| Type                  | Size in | Qty | Make | Depth ft |  | Type           | Size in | Qty | Make        |
| Guide Shoe            | 9.625   |     |      | 1744     |  | Top Plug       | 9.625   | 1   | weatherford |
| Float Shoe            | 9.625   |     |      |          |  | Bottom Plug    | 9.625   |     | HES         |
| Float Collar          | 9.625   |     |      |          |  | SSR plug set   | 9.625   |     | HES         |
| Insert Float          | 9.625   |     |      |          |  | Plug Container | 9.625   | 1   | HES         |
| Stage Tool            | 9.625   |     |      |          |  | Centralizers   | 9.625   |     | HES         |

| Fluid Data      |                        |                     |     |         |                        |                             |               |              |                     |  |
|-----------------|------------------------|---------------------|-----|---------|------------------------|-----------------------------|---------------|--------------|---------------------|--|
| Stage/Plug #: 1 |                        |                     |     |         |                        |                             |               |              |                     |  |
| Fluid #         | Stage Type             | Fluid Name          | Qty | Qty UoM | Mixing Density lbm/gal | Yield ft <sup>3</sup> /sack | Mix Fluid Gal | Rate bbl/min | Total Mix Fluid Gal |  |
| 1               | Mud Flush III (Powder) | Red Dye Spacer      | 10  | bbl     | 8.4                    |                             |               | 4            |                     |  |
| 42 gal/bbl      |                        | FRESH WATER         |     |         |                        |                             |               |              |                     |  |
| Fluid #         | Stage Type             | Fluid Name          | Qty | Qty UoM | Mixing Density lbm/gal | Yield ft <sup>3</sup> /sack | Mix Fluid Gal | Rate bbl/min | Total Mix Fluid Gal |  |
| 2               | SwiftCem B2            | SWIFTCM (TM) SYSTEM | 600 | sack    | 13.4                   | 1.78                        |               | 6            | 9.45                |  |

last updated on 9/22/2016 8:21:14 PM

Page 1 of 3

iCem® Service

(v. 4.2.393)

HALLIBURTON

*Cementing Job Summary*

| 9.45 Gal            |              | FRESH WATER  |       |         |                           |                                |                  |                 |                           |
|---------------------|--------------|--------------|-------|---------|---------------------------|--------------------------------|------------------|-----------------|---------------------------|
|                     |              |              |       |         |                           |                                |                  |                 |                           |
| Fluid #             | Stage Type   | Fluid Name   | Qty   | Qty UoM | Mixing Density<br>lbm/gal | Yield<br>ft <sup>3</sup> /sack | Mix Fluid<br>Gal | Rate<br>bbl/min | Total Mix<br>Fluid<br>Gal |
| 3                   | Displacement | Displacement | 131.3 | bbl     | 8.33                      |                                |                  | 7               |                           |
|                     |              |              |       |         |                           |                                |                  |                 |                           |
| Cement Left In Pipe | Amount       | 46 ft        |       |         | Reason                    |                                |                  | Shoe Joint      |                           |
|                     |              |              |       |         |                           |                                |                  |                 |                           |
| Comment             |              |              |       |         |                           |                                |                  |                 |                           |

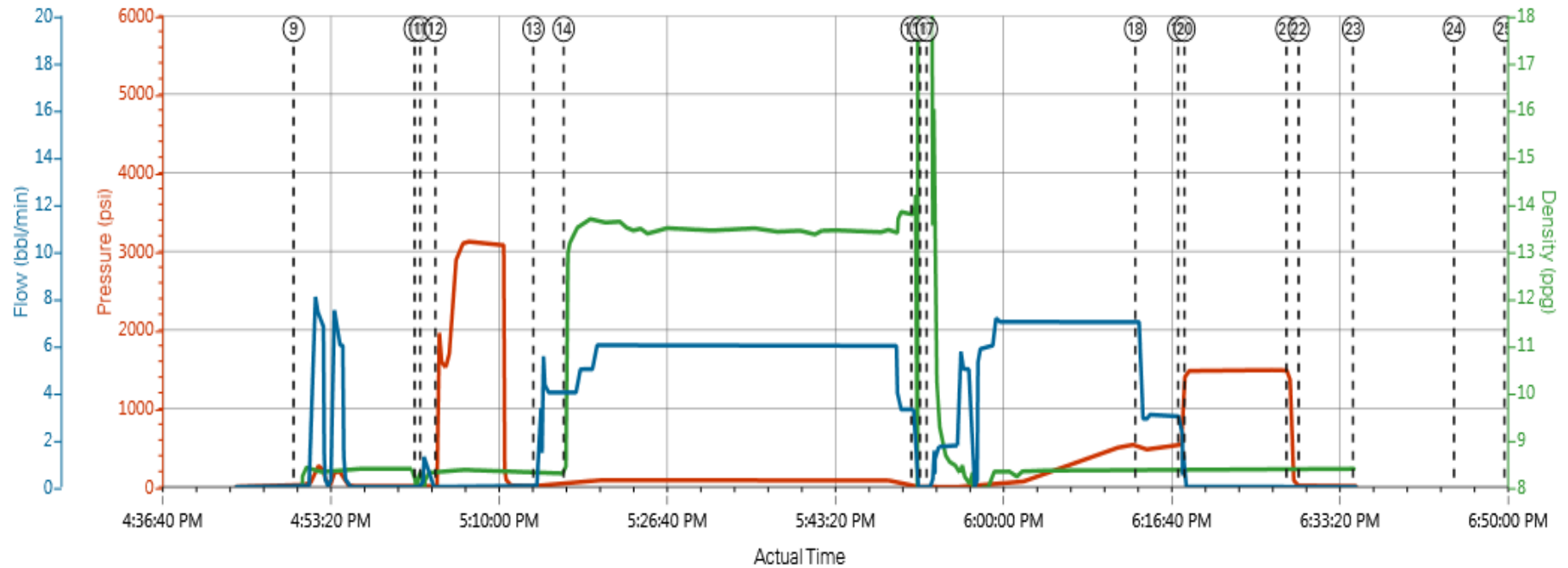
## 2.0 Real-Time Job Summary

## 2.1 Job Event Log

| Type  | Seq. No. | Activity                              | Graph Label                           | Date      | Time     | Source | Comments  |
|-------|----------|---------------------------------------|---------------------------------------|-----------|----------|--------|---|
| Event | 1        | Call Out                              | Call Out                              | 9/22/2016 | 08:00:00 | USER   |   |
| Event | 2        | Pre-Convoy Safety Meeting             | Pre-Convoy Safety Meeting             | 9/22/2016 | 10:50:00 | USER   | WITH ALL HES PERSONNEL  |
| Event | 3        | Crew Leave Yard                       | Crew Leave Yard                       | 9/22/2016 | 11:00:00 | USER   |   |
| Event | 4        | Arrive At Loc                         | Arrive At Loc                         | 9/22/2016 | 12:00:00 | USER   | RIG WAS RUNNING CASING UPON HES ARRIVAL   |
| Event | 5        | Assessment Of Location Safety Meeting | Assessment Of Location Safety Meeting | 9/22/2016 | 15:30:00 | USER   | WITH ALL HES PERSONNEL  |
| Event | 6        | Other                                 | Spot Equipment                        | 9/22/2016 | 15:45:00 | USER   |   |
| Event | 7        | Pre-Rig Up Safety Meeting             | Pre-Rig Up Safety Meeting             | 9/22/2016 | 15:55:00 | USER   | WITH ALL HES PERSONNEL  |
| Event | 8        | Rig-Up Equipment                      | Rig-Up Equipment                      | 9/22/2016 | 16:00:00 | USER   | 1 RED TIGER, 2 BULK TRUCKS  |
| Event | 9        | Pre-Job Safety Meeting                | Pre-Job Safety Meeting                | 9/22/2016 | 16:50:00 | USER   | WITH ALL PERSONNEL  |
| Event | 10       | Start Job                             | Start Job                             | 9/22/2016 | 17:02:00 | USER   | TD 1760 FT, TP 1743.80 FT, SHOE 45.55 FT, CSG 9 5/8 IN 36 LB/FT, HOLE 13 1/2 IN, MUD WT 8.8 PPG |
| Event | 11       | Prime Pumps                           | Prime Pumps                           | 9/22/2016 | 17:02:32 | USER   | FRESH WATER   |
| Event | 12       | Test Lines                            | Test Lines                            | 9/22/2016 | 17:04:02 | USER   | TESTED LINES TO 3127 PSI PRESSURE HOLDING   |
| Event | 13       | Pump Spacer                           | Pump Red Dye Spacer                   | 9/22/2016 | 17:13:46 | USER   | FRESH WATER WITH 2 LBS RED DYE  |
| Event | 14       | Pump Cement                           | Pump Cement                           | 9/22/2016 | 17:16:45 | USER   | 600 SKS AT 13.4 PPG, 1.78 FT3/SK, 9.45 GAL/SK   |

|       |    |                             |                             |           |          |      |   |
|-------|----|-----------------------------|-----------------------------|-----------|----------|------|---|
| Event | 15 | Shutdown                    | Shutdown                    | 9/22/2016 | 17:51:13 | USER |   |
| Event | 16 | Drop Top Plug               | Drop Top Plug               | 9/22/2016 | 17:52:04 | USER | PLUG LAUNCHED   |
| Event | 17 | Pump Displacement           | Pump Displacement           | 9/22/2016 | 17:52:44 | USER | FRESH WATER   |
| Event | 18 | Slow Rate                   | Slow Rate                   | 9/22/2016 | 18:13:24 | USER | SLOWED RATE 10 BBLS PRIOR TO CALCULATED DISPLACEMENT  |
| Event | 19 | Bump Plug                   | Bump Plug                   | 9/22/2016 | 18:17:40 | COM5 |   |
| Event | 20 | Pressure Test               | Pressure Test               | 9/22/2016 | 18:18:17 | USER | PRESSURE TEST CASING FOR 10 MIN AT 1500 PSI AS PER COMPANY REP  |
| Event | 21 | Check Floats                | Check Floats                | 9/22/2016 | 18:28:23 | USER | FLOATS HOLDING. HES RETURNED 3/4 BBL H2O TO PUMP.   |
| Event | 22 | End Job                     | End Job                     | 9/22/2016 | 18:29:36 | COM5 | PIPE WAS STATIC DURING JOB, GOOD CIRCULATION THROUGHOUT JOB. HES RETURNED 25 BBLS CEMENT TO SURFACE. USED 100 LB SUGAR FOR JOB. |
| Event | 23 | Pre-Rig Down Safety Meeting | Pre-Rig Down Safety Meeting | 9/22/2016 | 18:35:00 | USER | WITH ALL HES PERSONNEL  |
| Event | 24 | Rig-Down Equipment          | Rig-Down Equipment          | 9/22/2016 | 18:45:00 | USER |   |
| Event | 25 | Pre-Convoy Safety Meeting   | Pre-Convoy Safety Meeting   | 9/22/2016 | 18:50:00 | USER | WITH ALL HES PERSONNEL  |
| Event | 26 | Crew Leave Location         | Crew Leave Location         | 9/22/2016 | 19:00:00 | USER |   |
| Event | 27 | Comment                     | Comment                     | 9/22/2016 | 19:01:00 | USER | THANK YOU FOR USING HALLIBURTON CEMENT DEPARTMENT. JESSE SLAUGHTER AND CREW.  |

## Custom Results



PS Pump Press (psi) DH Density (ppg) Comb Pump Rate (bbl/min)

① Call Out n/a;n/a;n/a ③ Crew Leave Yard n/a;n/a;n/a ⑤ Assessment Of Location Safety Meeting n/a;n/a;n/a ⑦ Pre-Rig Up Safety Meeting n/a;n/a;n/a ⑨ Pre-Job Safety Meeting 6:0.05;0 ⑪ Priir  
② Pre-Convoy Safety Meeting n/a;n/a;n/a ④ Arrive At Loc n/a;n/a;n/a ⑥ Spot Equipment n/a;n/a;n/a ⑧ Rig-Up Equipment n/a;n/a;n/a ⑩ Start Job 9:8.32;0 ⑫ Tes

