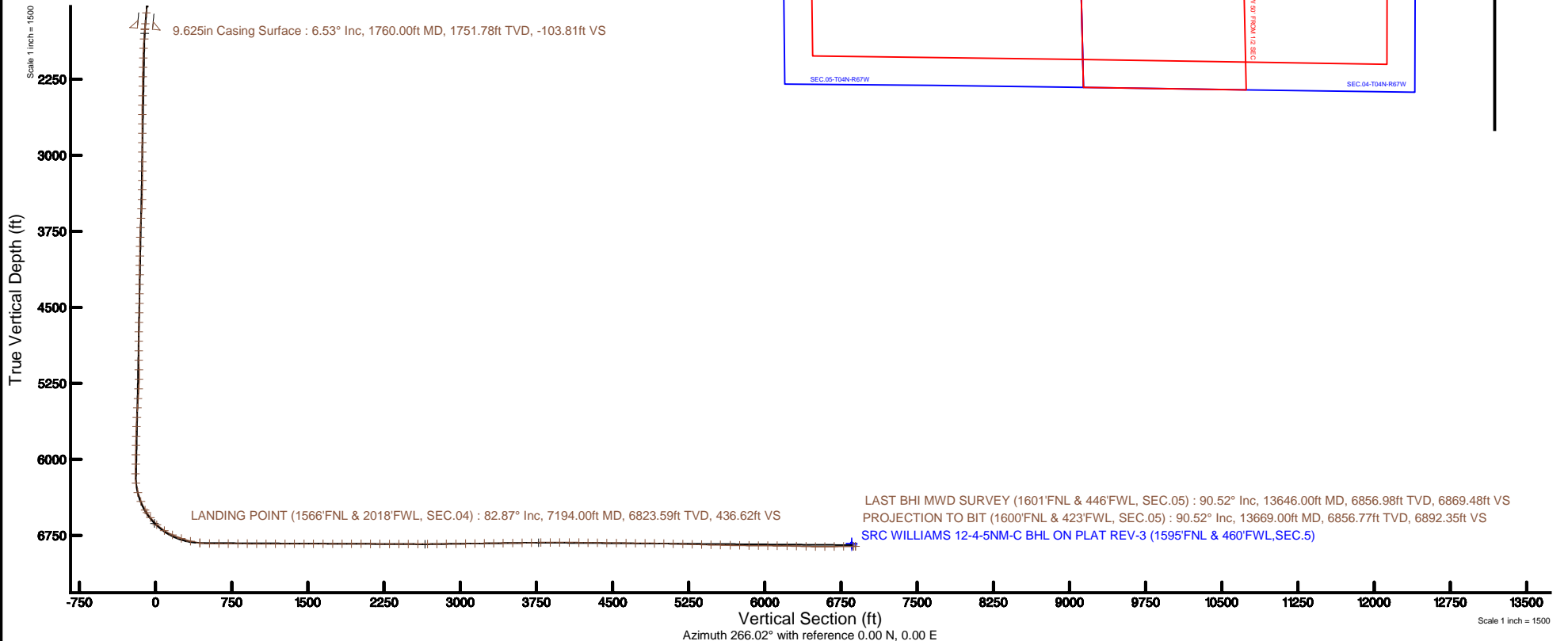
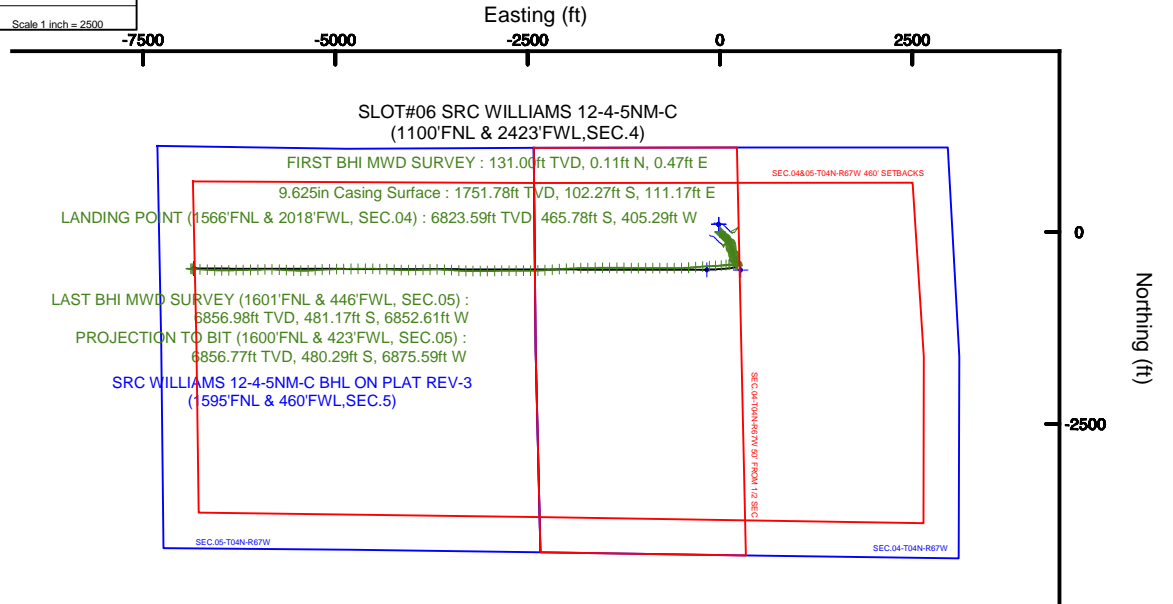


SYNERGY RESOURCES CORPORATION

Location: COLORADO Slot: SLOT#06 SRC WILLIAMS 12-4-5NM-C (1100'FNL & 2423'FWL,SEC.4)
Field: WELD COUNTY (NAD83,TRUE NORTH) Well: SRC WILLIAMS 12-4-5NM-C
Facility: SEC.04-T4N-R67W Wellbore: SRC WILLIAMS 12-4-5NM-C PWB

Plot reference wellpath is SRC WILLIAMS 12-4-5NM-C (REV-D.0) PWP	Grid System: NAD83 / Lambert Colorado SP, Northern Zone (501), US feet
True vertical depths are referenced to PRECISION 462 (20) (RKB)	* = Wellpath was transformed from a different geodetic datum
Measured depths are referenced to PRECISION 462 (20) (RKB)	North Reference: True north
PRECISION 462 (20) (RKB) to Mean Sea Level: 4812 feet	Scale: True distance
Mean Sea Level to Mud line (At Slot: SLOT#06 SRC WILLIAMS 12-4-5NM-C (1100'FNL & 2423'FWL,SEC.4)): 0 feet	Depths are in feet
Coordinates are in feet referenced to Slot	Created by: ingnjann on 2017-01-26
	Database: WellArchitectDB



Actual Wellpath Report

SRC WILLIAMS 12-4-5NM-C AWP

Page 1 of 8

REFERENCE WELLPATH IDENTIFICATION

Operator	SYNERGY RESOURCES CORPORATION	Slot	SLOT#06 SRC WILLIAMS 12-4-5NM-C (1100'FNL & 2423'FWL,SEC.4)
Area	COLORADO	Well	SRC WILLIAMS 12-4-5NM-C
Field	WELD COUNTY (NAD83,TRUE NORTH)	Wellbore	SRC WILLIAMS 12-4-5NM-C AWB
Facility	SEC.04-T4N-R67W		

REPORT SETUP INFORMATION

Projection System	NAD83 / Lambert Colorado SP, Northern Zone (501), US feet	Software System	WellArchitect® 5.0
North Reference	True	User	Ingmjmr
Scale	0.999958	Report Generated	1/26/2017 at 10:43:58 AM
Convergence at slot	0.39° East	Database/Source file	WellArchitectDB/SRC_WILLIAMS_12-4-5NM-C_AWP.xml

WELLPATH LOCATION

	Local coordinates		Grid coordinates		Geographic coordinates	
	North[ft]	East[ft]	Easting[US ft]	Northing[US ft]	Latitude	Longitude
Slot Location	-20.04	3.10	3167898.68	1369450.35	40°20'45.517"N	104°53'51.468"W
Facility Reference Pt			3167895.45	1369470.36	40°20'45.715"N	104°53'51.508"W
Field Reference Pt			3171284.48	1426358.81	40°30'07.643"N	104°53'02.634"W

WELLPATH DATUM

Calculation method	Minimum curvature	PRECISION 462 (20') (RKB) to Facility Vertical Datum	4812.00ft
Horizontal Reference Pt	Slot	PRECISION 462 (20') (RKB) to Mean Sea Level	4812.00ft
Vertical Reference Pt	PRECISION 462 (20') (RKB)	PRECISION 462 (20') (RKB) to Mud Line at Slot (SLOT#06 SRC WILLIAMS 12-4-5NM-C (1100'FNL & 2423'FWL,SEC.4))	4812.00ft
MD Reference Pt	PRECISION 462 (20') (RKB)	Section Origin	N 0.00, E 0.00 ft
Field Vertical Reference	Mean Sea Level	Section Azimuth	266.02°

Actual Wellpath Report

SRC WILLIAMS 12-4-5NM-C AWP

Page 2 of 8

REFERENCE WELLPATH IDENTIFICATION

Operator	SYNERGY RESOURCES CORPORATION	Slot	SLOT#06 SRC WILLIAMS 12-4-5NM-C (1100'FNL & 2423'FWL, SEC.4)
Area	COLORADO	Well	SRC WILLIAMS 12-4-5NM-C
Field	WELD COUNTY (NAD83, TRUE NORTH)	Wellbore	SRC WILLIAMS 12-4-5NM-C AWB
Facility	SEC.04-T4N-R67W		

WELLPATH DATA (150 stations) † = interpolated/extrapolated station

MD [ft]	Inclination [°]	Azimuth [°]	TVD [ft]	Vert Sect [ft]	North [ft]	East [ft]	Latitude	Longitude	DLS [°/100ft]	Comments
0.00†	0.000	76.650	0.00	0.00	0.00	0.00	40°20'45.517"N	104°53'51.468"W	0.00	
20.00	0.000	76.650	20.00	0.00	0.00	0.00	40°20'45.517"N	104°53'51.468"W	0.00	
131.00	0.500	76.650	131.00	-0.48	0.11	0.47	40°20'45.518"N	104°53'51.462"W	0.45	FIRST BHI MWD SURVEY
254.00	0.440	145.610	254.00	-1.25	-0.15	1.26	40°20'45.515"N	104°53'51.452"W	0.43	
343.00	1.260	136.990	342.98	-2.04	-1.15	2.12	40°20'45.506"N	104°53'51.441"W	0.93	
434.00	2.910	138.910	433.92	-4.06	-3.62	4.32	40°20'45.481"N	104°53'51.412"W	1.81	
524.00	5.000	136.580	523.70	-7.93	-8.20	8.52	40°20'45.436"N	104°53'51.358"W	2.33	
614.00	6.440	136.920	613.25	-13.61	-14.73	14.66	40°20'45.371"N	104°53'51.279"W	1.60	
704.00	7.160	137.190	702.62	-20.31	-22.53	21.92	40°20'45.294"N	104°53'51.185"W	0.80	
793.00	6.500	134.830	790.99	-27.10	-30.15	29.26	40°20'45.219"N	104°53'51.090"W	0.81	
883.00	6.230	134.500	880.43	-33.69	-37.17	36.36	40°20'45.150"N	104°53'50.998"W	0.30	
973.00	6.390	135.850	969.89	-40.16	-44.18	43.33	40°20'45.080"N	104°53'50.908"W	0.24	
1063.00	6.510	137.650	1059.32	-46.56	-51.55	50.26	40°20'45.008"N	104°53'50.819"W	0.26	
1153.00	6.100	132.820	1148.77	-53.00	-58.57	57.20	40°20'44.938"N	104°53'50.729"W	0.74	
1243.00	6.650	128.690	1238.22	-60.11	-65.08	64.78	40°20'44.874"N	104°53'50.631"W	0.80	
1333.00	7.020	131.480	1327.58	-67.80	-71.98	72.96	40°20'44.806"N	104°53'50.526"W	0.55	
1423.00	6.620	129.840	1416.94	-75.40	-78.94	81.07	40°20'44.737"N	104°53'50.421"W	0.49	
1513.00	6.810	128.920	1506.32	-83.05	-85.62	89.20	40°20'44.671"N	104°53'50.316"W	0.24	
1603.00	6.210	127.290	1595.74	-90.62	-91.92	97.23	40°20'44.609"N	104°53'50.212"W	0.70	
1710.00	6.390	125.680	1702.10	-99.55	-98.90	106.67	40°20'44.540"N	104°53'50.090"W	0.24	
1768.00	6.553	128.329	1759.73	-104.48	-102.83	111.89	40°20'44.501"N	104°53'50.023"W	0.59	
1862.00	4.906	125.812	1853.25	-111.54	-108.51	119.35	40°20'44.445"N	104°53'49.927"W	1.77	
1955.00	5.006	140.452	1945.91	-116.95	-113.97	125.16	40°20'44.391"N	104°53'49.852"W	1.36	
2050.00	4.777	151.237	2040.57	-121.02	-120.63	129.71	40°20'44.325"N	104°53'49.793"W	1.00	
2142.00	4.922	166.216	2132.24	-123.30	-127.82	132.49	40°20'44.254"N	104°53'49.757"W	1.38	
2236.00	4.934	170.467	2225.89	-124.38	-135.73	134.12	40°20'44.176"N	104°53'49.736"W	0.39	
2329.00	4.979	167.140	2318.54	-125.39	-143.61	135.68	40°20'44.098"N	104°53'49.716"W	0.31	
2423.00	5.116	161.213	2412.18	-127.09	-151.55	137.94	40°20'44.019"N	104°53'49.687"W	0.57	
2516.00	4.630	162.807	2504.84	-129.01	-159.06	140.38	40°20'43.945"N	104°53'49.655"W	0.54	
2609.00	5.025	171.411	2597.52	-130.20	-166.68	142.10	40°20'43.870"N	104°53'49.633"W	0.89	

Actual Wellpath Report

SRC WILLIAMS 12-4-5NM-C AWP

Page 3 of 8

REFERENCE WELLPATH IDENTIFICATION			
Operator	SYNERGY RESOURCES CORPORATION	Slot	SLOT#06 SRC WILLIAMS 12-4-5NM-C (1100'FNL & 2423'FWL,SEC.4)
Area	COLORADO	Well	SRC WILLIAMS 12-4-5NM-C
Field	WELD COUNTY (NAD83,TRUE NORTH)	Wellbore	SRC WILLIAMS 12-4-5NM-C AWB
Facility	SEC.04-T4N-R67W		

WELLPATH DATA (150 stations)										
MD [ft]	Inclination [°]	Azimuth [°]	TVD [ft]	Vert Sect [ft]	North [ft]	East [ft]	Latitude	Longitude	DLS [°/100ft]	Comments
2703.00	4.905	174.373	2691.16	-130.64	-174.75	143.11	40°20'43.790"N	104°53'49.620"W	0.30	
2796.00	5.039	178.543	2783.81	-130.58	-182.79	143.60	40°20'43.711"N	104°53'49.613"W	0.41	
2888.00	4.638	175.467	2875.49	-130.43	-190.53	144.00	40°20'43.634"N	104°53'49.608"W	0.52	
2982.00	4.962	174.350	2969.16	-130.59	-198.37	144.70	40°20'43.557"N	104°53'49.599"W	0.36	
3076.00	4.873	175.062	3062.81	-130.78	-206.39	145.44	40°20'43.477"N	104°53'49.590"W	0.11	
3169.00	4.866	176.764	3155.47	-130.79	-214.27	146.01	40°20'43.400"N	104°53'49.582"W	0.16	
3262.00	5.030	174.347	3248.13	-130.86	-222.26	146.63	40°20'43.321"N	104°53'49.574"W	0.28	
3355.00	4.789	167.822	3340.79	-131.53	-230.11	147.85	40°20'43.243"N	104°53'49.559"W	0.65	
3450.00	4.810	164.696	3435.45	-132.88	-237.83	149.74	40°20'43.167"N	104°53'49.534"W	0.28	
3544.00	4.564	127.983	3529.16	-136.43	-243.93	153.73	40°20'43.107"N	104°53'49.483"W	3.15	
3637.00	4.784	119.944	3621.85	-142.40	-248.15	160.00	40°20'43.065"N	104°53'49.402"W	0.74	
3729.00	4.834	142.146	3713.54	-147.75	-253.12	165.71	40°20'43.016"N	104°53'49.328"W	2.01	
3823.00	4.542	159.575	3807.23	-151.01	-259.74	169.44	40°20'42.950"N	104°53'49.280"W	1.54	
3915.00	4.572	168.118	3898.94	-152.55	-266.74	171.46	40°20'42.881"N	104°53'49.254"W	0.74	
4009.00	4.756	168.258	3992.63	-153.59	-274.22	173.03	40°20'42.807"N	104°53'49.233"W	0.20	
4103.00	4.559	169.042	4086.32	-154.57	-281.70	174.53	40°20'42.733"N	104°53'49.214"W	0.22	
4196.00	4.886	164.179	4179.00	-155.83	-289.14	176.31	40°20'42.660"N	104°53'49.191"W	0.56	
4290.00	4.958	170.480	4272.65	-157.04	-297.00	178.08	40°20'42.582"N	104°53'49.168"W	0.58	
4384.00	4.869	170.932	4366.31	-157.79	-304.95	179.38	40°20'42.504"N	104°53'49.151"W	0.10	
4478.00	4.816	171.475	4459.97	-158.46	-312.79	180.59	40°20'42.426"N	104°53'49.136"W	0.07	
4571.00	3.808	153.561	4552.71	-159.95	-319.41	182.54	40°20'42.361"N	104°53'49.110"W	1.80	
4667.00	4.991	155.243	4648.43	-162.64	-326.06	185.71	40°20'42.295"N	104°53'49.070"W	1.24	
4759.00	4.883	168.669	4740.09	-164.57	-333.53	188.16	40°20'42.221"N	104°53'49.038"W	1.26	
4854.00	4.879	173.642	4834.75	-165.25	-341.51	189.40	40°20'42.142"N	104°53'49.022"W	0.45	
4949.00	3.976	178.995	4929.46	-165.25	-348.82	189.90	40°20'42.070"N	104°53'49.015"W	1.04	
5041.00	4.631	183.087	5021.20	-164.63	-355.72	189.76	40°20'42.002"N	104°53'49.017"W	0.79	
5136.00	4.715	184.998	5115.89	-163.54	-363.44	189.21	40°20'41.926"N	104°53'49.024"W	0.19	
5230.00	4.879	170.085	5209.56	-163.36	-371.23	189.57	40°20'41.849"N	104°53'49.020"W	1.33	
5325.00	4.840	135.833	5304.24	-166.36	-378.08	193.05	40°20'41.781"N	104°53'48.975"W	3.01	
5420.00	4.552	114.134	5398.93	-172.27	-382.50	199.29	40°20'41.737"N	104°53'48.894"W	1.88	

Actual Wellpath Report

SRC WILLIAMS 12-4-5NM-C AWP

Page 4 of 8

REFERENCE WELLPATH IDENTIFICATION

Operator	SYNERGY RESOURCES CORPORATION	Slot	SLOT#06 SRC WILLIAMS 12-4-5NM-C (1100'FNL & 2423'FWL, SEC.4)
Area	COLORADO	Well	SRC WILLIAMS 12-4-5NM-C
Field	WELD COUNTY (NAD83, TRUE NORTH)	Wellbore	SRC WILLIAMS 12-4-5NM-C AWB
Facility	SEC.04-T4N-R67W		

WELLPATH DATA (150 stations)

MD [ft]	Inclination [°]	Azimuth [°]	TVD [ft]	Vert Sect [ft]	North [ft]	East [ft]	Latitude	Longitude	DLS [°/100ft]	Comments
5513.00	5.162	130.317	5491.60	-178.52	-386.71	205.85	40°20'41.696"N	104°53'48.810"W	1.61	
5607.00	4.735	141.700	5585.25	-183.74	-392.50	211.47	40°20'41.638"N	104°53'48.737"W	1.14	
5699.00	4.642	147.306	5676.94	-187.67	-398.61	215.84	40°20'41.578"N	104°53'48.680"W	0.51	
5793.00	4.875	162.145	5770.62	-190.45	-405.61	219.12	40°20'41.509"N	104°53'48.638"W	1.33	
5885.00	4.952	164.438	5862.28	-192.19	-413.16	221.38	40°20'41.434"N	104°53'48.609"W	0.23	
5978.00	4.727	163.636	5954.95	-193.81	-420.70	223.54	40°20'41.360"N	104°53'48.581"W	0.25	
6071.00	4.936	160.449	6047.62	-195.71	-428.15	225.96	40°20'41.286"N	104°53'48.550"W	0.37	
6165.00	5.158	159.797	6141.26	-197.98	-435.92	228.77	40°20'41.209"N	104°53'48.513"W	0.24	
6259.00	7.915	260.540	6234.87	-192.70	-440.97	223.83	40°20'41.159"N	104°53'48.577"W	10.86	
6352.00	16.287	285.113	6325.77	-173.96	-438.61	204.88	40°20'41.183"N	104°53'48.822"W	10.38	
6446.00	23.349	286.447	6414.15	-144.01	-429.89	174.25	40°20'41.269"N	104°53'49.218"W	7.53	
6541.00	31.021	270.993	6498.70	-101.86	-424.12	131.60	40°20'41.326"N	104°53'49.768"W	10.92	
6571.00	32.751	261.634	6524.19	-86.06	-425.17	115.84	40°20'41.316"N	104°53'49.972"W	17.44	
6633.00	38.331	260.063	6574.62	-50.19	-430.93	80.28	40°20'41.259"N	104°53'50.431"W	9.12	
6727.00	46.584	266.682	6643.94	13.08	-437.95	17.34	40°20'41.189"N	104°53'51.244"W	9.97	
6820.00	56.930	267.693	6701.43	86.01	-441.49	-55.51	40°20'41.154"N	104°53'52.185"W	11.16	
6913.00	66.391	267.517	6745.53	167.74	-444.91	-137.20	40°20'41.121"N	104°53'53.240"W	10.17	
7007.00	70.752	266.057	6779.87	255.21	-449.83	-224.54	40°20'41.072"N	104°53'54.368"W	4.86	
7101.00	76.131	263.923	6806.65	345.26	-457.72	-314.26	40°20'40.994"N	104°53'55.527"W	6.12	
7194.00	82.866	265.927	6823.59	436.62	-465.78	-405.29	40°20'40.914"N	104°53'56.702"W	7.54	LANDING POINT (1566'FNL & 2018'FWL, SEC.04)
7288.00	89.631	269.629	6829.74	530.31	-469.41	-498.94	40°20'40.878"N	104°53'57.912"W	8.20	
7382.00	89.692	270.047	6830.29	624.10	-469.67	-592.94	40°20'40.876"N	104°53'59.126"W	0.45	
7475.00	89.938	269.885	6830.59	716.88	-469.73	-685.94	40°20'40.875"N	104°54'00.327"W	0.32	
7569.00	89.938	268.998	6830.70	810.71	-470.64	-779.94	40°20'40.866"N	104°54'01.541"W	0.94	
7661.00	89.754	269.521	6830.94	902.56	-471.83	-871.93	40°20'40.854"N	104°54'02.729"W	0.60	
7754.00	89.784	270.727	6831.32	995.32	-471.63	-964.92	40°20'40.856"N	104°54'03.930"W	1.30	
7848.00	89.877	270.435	6831.60	1089.02	-470.68	-1058.92	40°20'40.866"N	104°54'05.144"W	0.33	
7941.00	90.062	270.783	6831.65	1181.72	-469.69	-1151.91	40°20'40.875"N	104°54'06.345"W	0.42	
8035.00	89.754	270.636	6831.80	1275.41	-468.53	-1245.91	40°20'40.887"N	104°54'07.559"W	0.36	
8128.00	89.877	270.034	6832.10	1368.14	-467.98	-1338.90	40°20'40.892"N	104°54'08.760"W	0.66	

Actual Wellpath Report

SRC WILLIAMS 12-4-5NM-C AWP

Page 5 of 8

REFERENCE WELLPATH IDENTIFICATION

Operator	SYNERGY RESOURCES CORPORATION	Slot	SLOT#06 SRC WILLIAMS 12-4-5NM-C (1100'FNL & 2423'FWL, SEC.4)
Area	COLORADO	Well	SRC WILLIAMS 12-4-5NM-C
Field	WELD COUNTY (NAD83, TRUE NORTH)	Wellbore	SRC WILLIAMS 12-4-5NM-C AWB
Facility	SEC.04-T4N-R67W		

WELLPATH DATA (150 stations)

MD [ft]	Inclination [°]	Azimuth [°]	TVD [ft]	Vert Sect [ft]	North [ft]	East [ft]	Latitude	Longitude	DLS [°/100ft]	Comments
8223.00	89.938	270.490	6832.25	1462.88	-467.55	-1433.90	40°20'40.896"N	104°54'09.987"W	0.48	
8315.00	89.908	269.543	6832.37	1554.66	-467.52	-1525.90	40°20'40.897"N	104°54'11.175"W	1.03	
8410.00	90.031	268.715	6832.42	1649.52	-468.97	-1620.89	40°20'40.882"N	104°54'12.401"W	0.88	
8505.00	90.031	269.600	6832.37	1744.38	-470.36	-1715.88	40°20'40.868"N	104°54'13.628"W	0.93	
8598.00	90.000	269.062	6832.35	1837.22	-471.45	-1808.87	40°20'40.858"N	104°54'14.829"W	0.58	
8691.00	89.815	267.850	6832.50	1930.13	-473.95	-1901.84	40°20'40.833"N	104°54'16.030"W	1.32	
8785.00	89.877	266.990	6832.75	2024.10	-478.18	-1995.74	40°20'40.791"N	104°54'17.243"W	0.92	
8878.00	89.692	265.266	6833.10	2117.10	-484.46	-2088.52	40°20'40.729"N	104°54'18.441"W	1.87	
8971.00	89.662	265.840	6833.63	2210.10	-491.68	-2181.24	40°20'40.657"N	104°54'19.638"W	0.62	
9065.00	89.692	267.006	6834.16	2304.09	-497.54	-2275.05	40°20'40.599"N	104°54'20.850"W	1.24	
9157.00	89.908	267.575	6834.48	2396.07	-501.89	-2366.95	40°20'40.556"N	104°54'22.037"W	0.66	
9251.00	89.969	268.837	6834.58	2490.00	-504.83	-2460.90	40°20'40.527"N	104°54'23.250"W	1.34	
9345.00	89.846	270.655	6834.73	2583.79	-505.25	-2554.90	40°20'40.523"N	104°54'24.464"W	1.94	
9439.00	90.461	270.941	6834.48	2677.47	-503.94	-2648.89	40°20'40.536"N	104°54'25.678"W	0.72	
9532.00	90.246	270.607	6833.90	2770.14	-502.68	-2741.88	40°20'40.548"N	104°54'26.879"W	0.43	
9625.00	90.401	268.474	6833.38	2862.96	-503.43	-2834.87	40°20'40.541"N	104°54'28.080"W	2.30	
9720.00	90.801	267.743	6832.38	2957.89	-506.56	-2929.81	40°20'40.510"N	104°54'29.306"W	0.88	
9814.00	90.924	269.665	6830.97	3051.78	-508.69	-3023.77	40°20'40.488"N	104°54'30.519"W	2.05	
9907.00	90.738	270.164	6829.62	3144.55	-508.83	-3116.76	40°20'40.487"N	104°54'31.720"W	0.57	
10001.00	90.801	270.207	6828.35	3238.29	-508.52	-3210.75	40°20'40.490"N	104°54'32.934"W	0.08	
10094.00	90.769	272.159	6827.08	3330.90	-506.60	-3303.72	40°20'40.509"N	104°54'34.135"W	2.10	
10186.00	90.831	273.498	6825.80	3422.24	-502.07	-3395.60	40°20'40.553"N	104°54'35.321"W	1.46	
10281.00	90.585	273.382	6824.62	3516.44	-496.37	-3490.42	40°20'40.610"N	104°54'36.546"W	0.29	
10374.00	90.860	273.560	6823.45	3608.65	-490.74	-3583.24	40°20'40.665"N	104°54'37.745"W	0.35	
10467.00	90.860	269.740	6822.05	3701.17	-488.06	-3676.17	40°20'40.691"N	104°54'38.945"W	4.11	
10560.00	91.020	268.040	6820.53	3794.04	-489.86	-3769.14	40°20'40.673"N	104°54'40.146"W	1.84	
10653.00	90.830	268.680	6819.03	3886.95	-492.52	-3862.09	40°20'40.647"N	104°54'41.346"W	0.72	
10746.00	89.350	268.660	6818.88	3979.85	-494.68	-3955.06	40°20'40.626"N	104°54'42.547"W	1.59	
10840.00	89.320	269.460	6819.97	4073.71	-496.22	-4049.04	40°20'40.610"N	104°54'43.761"W	0.85	
10935.00	89.420	271.870	6821.01	4168.39	-495.12	-4144.02	40°20'40.621"N	104°54'44.987"W	2.54	

REFERENCE WELLPATH IDENTIFICATION			
Operator	SYNERGY RESOURCES CORPORATION	Slot	SLOT#06 SRC WILLIAMS 12-4-5NM-C (1100'FNL & 2423'FWL, SEC.4)
Area	COLORADO	Well	SRC WILLIAMS 12-4-5NM-C
Field	WELD COUNTY (NAD83, TRUE NORTH)	Wellbore	SRC WILLIAMS 12-4-5NM-C AWB
Facility	SEC.04-T4N-R67W		

WELLPATH DATA (150 stations)										
MD [ft]	Inclination [°]	Azimuth [°]	TVD [ft]	Vert Sect [ft]	North [ft]	East [ft]	Latitude	Longitude	DLS [°/100ft]	Comments
11027.00	89.540	273.310	6821.85	4259.78	-490.96	-4235.92	40°20'40.662"N	104°54'46.174"W	1.57	
11120.00	89.380	273.440	6822.73	4352.01	-485.49	-4328.76	40°20'40.716"N	104°54'47.373"W	0.22	
11213.00	89.290	271.220	6823.81	4444.43	-481.71	-4421.67	40°20'40.753"N	104°54'48.573"W	2.39	
11307.00	89.380	270.750	6824.90	4538.07	-480.09	-4515.65	40°20'40.769"N	104°54'49.787"W	0.51	
11402.00	89.380	269.680	6825.92	4632.81	-479.74	-4610.64	40°20'40.772"N	104°54'51.013"W	1.13	
11496.00	89.450	270.110	6826.88	4726.59	-479.91	-4704.63	40°20'40.770"N	104°54'52.227"W	0.46	
11590.00	89.540	268.990	6827.71	4820.41	-480.65	-4798.63	40°20'40.763"N	104°54'53.441"W	1.20	
11683.00	89.690	268.750	6828.34	4913.29	-482.48	-4891.61	40°20'40.744"N	104°54'54.642"W	0.30	
11776.00	88.610	268.970	6829.72	5006.17	-484.33	-4984.58	40°20'40.726"N	104°54'55.843"W	1.19	
11868.00	88.680	268.640	6831.89	5098.03	-486.25	-5076.53	40°20'40.707"N	104°54'57.030"W	0.37	
11962.00	88.370	267.020	6834.31	5191.95	-489.81	-5170.43	40°20'40.672"N	104°54'58.243"W	1.75	
12055.00	88.610	265.160	6836.76	5284.91	-496.14	-5263.17	40°20'40.609"N	104°54'59.441"W	2.02	
12148.00	88.430	267.620	6839.17	5377.87	-502.00	-5355.95	40°20'40.551"N	104°55'00.639"W	2.65	
12241.00	88.830	270.530	6841.39	5470.70	-503.50	-5448.90	40°20'40.536"N	104°55'01.839"W	3.16	
12334.00	88.680	272.170	6843.41	5563.28	-501.31	-5541.85	40°20'40.557"N	104°55'03.040"W	1.77	
12430.00	88.400	273.600	6845.86	5658.56	-496.48	-5637.70	40°20'40.605"N	104°55'04.278"W	1.52	
12523.00	89.540	273.000	6847.53	5750.79	-491.13	-5730.53	40°20'40.657"N	104°55'05.477"W	1.39	
12616.00	88.920	271.480	6848.78	5843.23	-487.49	-5823.44	40°20'40.693"N	104°55'06.677"W	1.77	
12709.00	89.690	268.080	6849.91	5936.01	-487.85	-5916.42	40°20'40.689"N	104°55'07.877"W	3.75	
12802.00	89.480	267.900	6850.58	6028.95	-491.11	-6009.36	40°20'40.657"N	104°55'09.078"W	0.30	
12895.00	89.750	269.630	6851.21	6121.84	-493.11	-6102.33	40°20'40.637"N	104°55'10.278"W	1.88	
12991.00	88.620	268.530	6852.57	6217.69	-494.66	-6198.31	40°20'40.621"N	104°55'11.518"W	1.64	
13084.00	88.490	268.570	6854.92	6310.57	-497.01	-6291.25	40°20'40.598"N	104°55'12.718"W	0.15	
13179.00	88.460	268.400	6857.44	6405.45	-499.52	-6386.18	40°20'40.573"N	104°55'13.944"W	0.18	
13271.00	89.290	270.530	6859.25	6497.26	-500.38	-6478.15	40°20'40.564"N	104°55'15.132"W	2.48	
13364.00	90.430	273.250	6859.48	6589.76	-497.31	-6571.09	40°20'40.594"N	104°55'16.332"W	3.17	
13458.00	90.650	274.010	6858.59	6682.93	-491.36	-6664.90	40°20'40.653"N	104°55'17.544"W	0.84	
13552.00	90.400	273.110	6857.73	6776.11	-485.52	-6758.71	40°20'40.710"N	104°55'18.755"W	0.99	
13646.00	90.520	272.200	6856.98	6869.48	-481.17	-6852.61	40°20'40.753"N	104°55'19.968"W	0.98	LAST BHI MWD SURVEY (1601'FNL & 446'FWL, SEC.05)
13669.00	90.520	272.200	6856.77	6892.35	-480.29	-6875.59	40°20'40.761"N	104°55'20.265"W	0.00	PROJECTION TO BIT (1600'FNL & 423'FWL, SEC.05)

HOLE & CASING SECTIONS - Ref Wellbore: SRC WILLIAMS 12-4-5NM-C AWB Ref Wellpath: SRC WILLIAMS 12-4-5NM-C AWP									
String/Diameter	Start MD [ft]	End MD [ft]	Interval [ft]	Start TVD [ft]	End TVD [ft]	Start N/S [ft]	Start E/W [ft]	End N/S [ft]	End E/W [ft]
13.5in Open Hole	20.00	1760.00	1740.00	20.00	1751.78	0.00	0.00	-102.27	111.17
9.625in Casing Surface	20.00	1760.00	1740.00	20.00	1751.78	0.00	0.00	-102.27	111.17
8.5in Open Hole	1760.00	13669.00	11909.00	1751.78	6856.77	-102.27	111.17	-480.29	-6875.59

TARGETS								
Name	TVD [ft]	North [ft]	East [ft]	Grid East [US ft]	Grid North [US ft]	Latitude	Longitude	Shape
SEC.04-T04N-R67W	-2.00	98.77	-15.87	3167882.14	1369549.00	40°20'46.493"N	104°53'51.673"W	polygon
SEC.05-T04N-R67W	-2.00	98.77	-15.87	3167882.14	1369549.00	40°20'46.493"N	104°53'51.673"W	polygon
SRC WILLIAMS 12-4-5NM-C BHL ON PLAT (1595'FNL & 460'FWL, SEC.5, REV-1)	6827.86	-475.55	-6838.29	3161064.08	1368928.38	40°20'40.808"N	104°55'19.783"W	point
SRC WILLIAMS 12-4-5NM-C BHL ON PLAT REV-2 (1595'FNL & 460'FWL, SEC.5)	6831.00	-475.55	-6838.29	3161064.08	1368928.38	40°20'40.808"N	104°55'19.783"W	point
SRC WILLIAMS 12-4-5NM-C BHL ON PLAT REV-3 (1595'FNL & 460'FWL, SEC.5)	6844.65	-475.55	-6838.29	3161064.08	1368928.38	40°20'40.808"N	104°55'19.783"W	point
SRC WILLIAMS 12-4-5NM-C TARGET #2 (REV-1)	6846.43	-493.25	-169.20	3167732.84	1368955.98	40°20'40.643"N	104°53'53.653"W	point
SEC.04&05-T04N-R67W 460' SETBACKS	6847.00	98.77	-15.87	3167882.14	1369549.00	40°20'46.493"N	104°53'51.673"W	polygon
SEC.04-T04N-R67W 50' FROM 1/2 SEC	6847.00	98.77	-15.87	3167882.14	1369549.00	40°20'46.493"N	104°53'51.673"W	polygon
SRC WILLIAMS 12-4-5NM-C TARGET#1 (REV-1)	6847.00	-495.80	270.95	3168172.98	1368956.42	40°20'40.618"N	104°53'47.969"W	point



Actual Wellpath Report

SRC WILLIAMS 12-4-5NM-C AWP

Page 7 of 8



REFERENCE WELLPATH IDENTIFICATION			
Operator	SYNERGY RESOURCES CORPORATION	Slot	SLOT#06 SRC WILLIAMS 12-4-5NM-C (1100'FNL & 2423'FWL,SEC.4)
Area	COLORADO	Well	SRC WILLIAMS 12-4-5NM-C
Field	WELD COUNTY (NAD83,TRUE NORTH)	Wellbore	SRC WILLIAMS 12-4-5NM-C AWB
Facility	SEC.04-T4N-R67W		

WELLPATH COMPOSITION - Ref Wellbore: SRC WILLIAMS 12-4-5NM-C AWB					Ref Wellpath: SRC WILLIAMS 12-4-5NM-C AWP	
Start MD [ft]	End MD [ft]	Positional Uncertainty Model		Log Name/Comment	Wellbore	
20.00	1710.00	Custom BHI NaviTrak (Standard Rotating+Axial Corr) (Rockies 0.03Gt model)		BHI NAVITRAK MWD, STD ROTATING, AXIAL, ROCKIES GT <131-1710>	SRC WILLIAMS 12-4-5NM-C AWB	
1710.00	13646.00	Custom BHI AutoTrak Curve (Short) (Rockies 0.03Gt model)		BHI ATC MWD SHORT, ROCKIES GT <1768-13646>	SRC WILLIAMS 12-4-5NM-C AWB	
13646.00	13669.00	Blind Drilling (std)		Projection to bit	SRC WILLIAMS 12-4-5NM-C AWB	



Actual Wellpath Report

SRC WILLIAMS 12-4-5NM-C AWP

Page 8 of 8



REFERENCE WELLPATH IDENTIFICATION			
Operator	SYNERGY RESOURCES CORPORATION	Slot	SLOT#06 SRC WILLIAMS 12-4-5NM-C (1100'FNL & 2423'FWL, SEC.4)
Area	COLORADO	Well	SRC WILLIAMS 12-4-5NM-C
Field	WELD COUNTY (NAD83, TRUE NORTH)	Wellbore	SRC WILLIAMS 12-4-5NM-C AWB
Facility	SEC.04-T4N-R67W		

WELLPATH COMMENTS				
MD [ft]	Inclination [°]	Azimuth [°]	TVD [ft]	Comment
131.00	0.500	76.650	131.00	FIRST BHI MWD SURVEY
7194.00	82.866	265.927	6823.59	LANDING POINT (1566'FNL & 2018'FWL, SEC.04)
13646.00	90.520	272.200	6856.98	LAST BHI MWD SURVEY (1601'FNL & 446'FWL, SEC.05)
13669.00	90.520	272.200	6856.77	PROJECTION TO BIT (1600'FNL & 423'FWL, SEC.05)