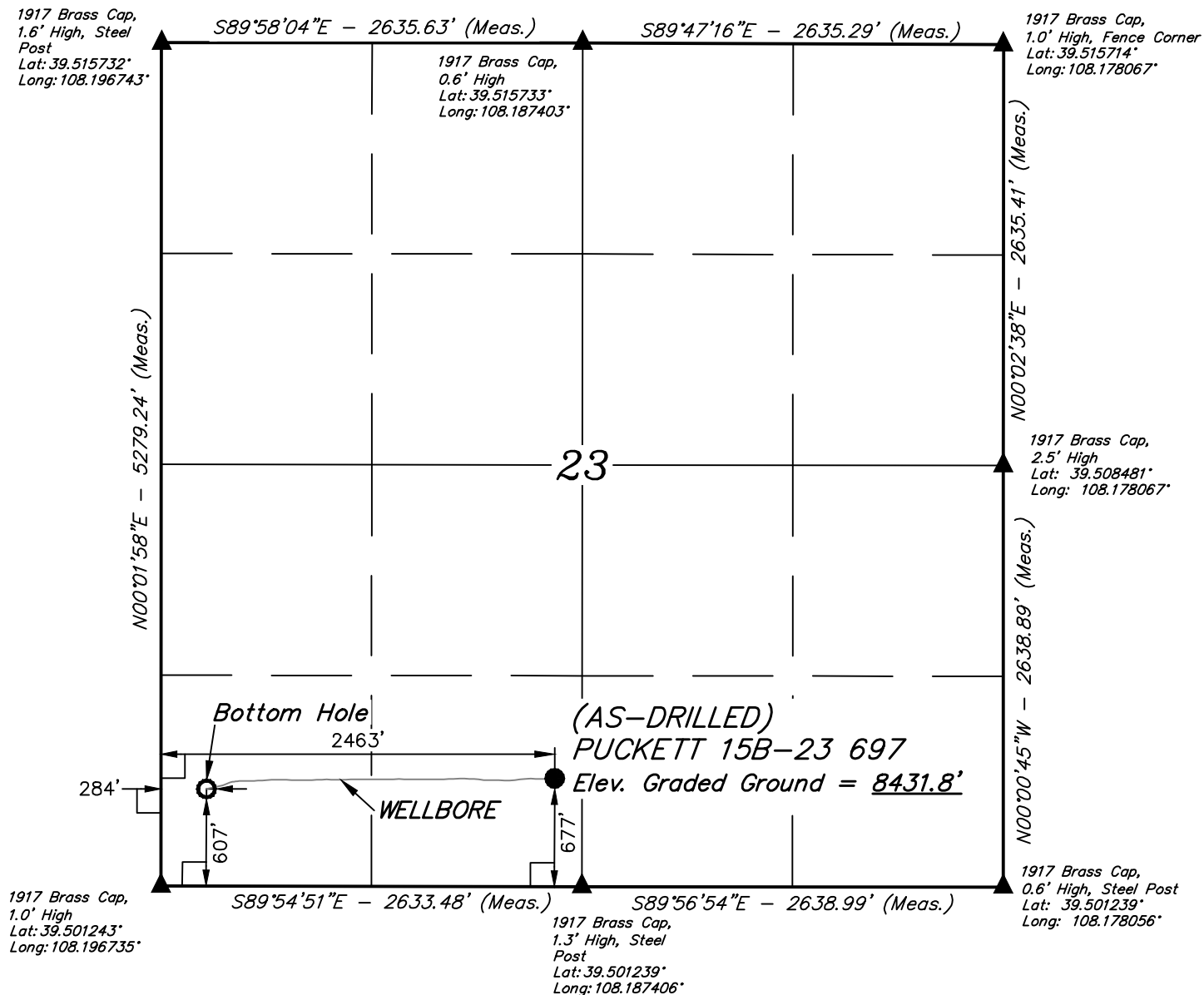


**LEGEND:**

- └─ = 90° SYMBOL  
● = AS-DRILLED WELLHEAD.  
○ = BOTTOM HOLE.  
▲ = SECTION CORNERS LOCATED. (NAD 83)

**T6S, R97W, 6th P.M.****NOTE:**

WELLBORE DATA PROVIDED BY  
Caerus Oil & Gas LLC.



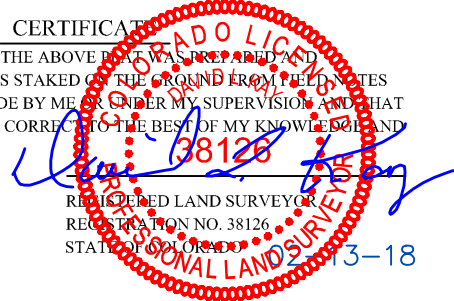
PDOP = 1.2



NAD 83 (SURFACE LOCATION)	NAD 83 (BOTTOM HOLE)
LATITUDE = 39°30'11.15" (39.503097)	LATITUDE = 39°30'10.47" (39.502908)
LONGITUDE = 108°11'16.83" (108.188008)	LONGITUDE = 108°11'44.63" (108.195731)
NAD 27 (SURFACE LOCATION)	NAD 27 (BOTTOM HOLE)
LATITUDE = 39°30'11.23" (39.503119)	LATITUDE = 39°30'10.55" (39.502931)
LONGITUDE = 108°11'14.54" (108.187372)	LONGITUDE = 108°11'42.34" (108.195094)
UTM NAD 27 (ZONE 12)	UTM NAD 27 (ZONE 12)
N: 14357515.09 E: 2433857.04	N: 14357378.51 E: 2431680.73

**CERTIFICATE**

THIS IS TO CERTIFY THAT THE ABOVE PLAT WAS PREPARED AND LOCATION AS SHOWN WAS STAKED ON THE GROUND FROM FIELD NOTES OF ACTUAL SURVEYS MADE BY ME OR UNDER MY SUPERVISION AND THAT THE SAME ARE TRUE AND CORRECT TO THE BEST OF MY KNOWLEDGE AND BELIEF.

**BASIS OF BEARINGS**

BASIS OF BEARINGS IS A G.P.S. OBSERVATION

**BASIS OF ELEVATION**

SPOT ELEVATION AT THE NORTHWEST CORNER OF SECTION 30, T5S, R95W, 6th P.M. TAKEN FROM THE FORKED GULCH QUADRANGLE, COLORADO, GARFIELD COUNTY, 7.5 MINUTE SERIES (TOPOGRAPHICAL MAP) PUBLISHED BY THE UNITED STATES DEPARTMENT OF THE INTERIOR, GEOLOGICAL SURVEY. SAID ELEVATION IS MARKED AS BEING 5966 FEET.

**UELS, LLC**

Corporate Office \* 85 South 200 East  
Vernal, UT 84078 \* (435) 789-1017

**Caerus Oil & Gas LLC**

(AS-DRILLED) PUCKETT 15B-23 697  
SE 1/4 SW 1/4, SECTION 23, T6S, R97W, 6th P.M.  
GARFIELD COUNTY, COLORADO

SURVEYED BY	BART HUNTING	02-07-18	SCALE
DRAWN BY	C.D.L.	02-08-18	1" = 1000'

**AS-DRILLED WELL LOCATION PLAT**