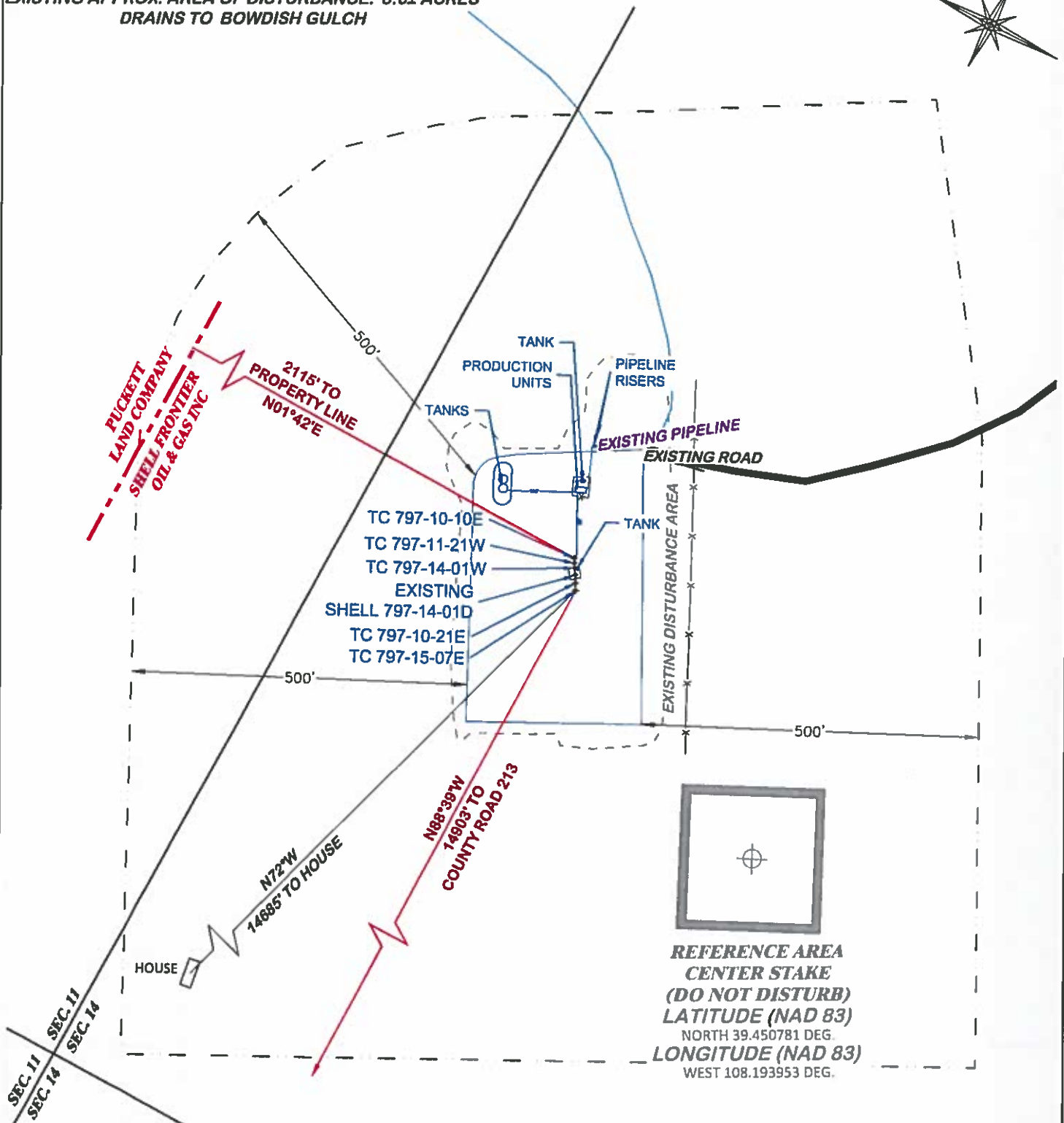


EXISTING ELEVATION: 8307.0'
 EXISTING APPROX. AREA OF DISTURBANCE: 3.6± ACRES
 DRAINS TO BOWDISH GULCH

LOCATION DRAWING



**BEFORE DIGGING
 CALL FOR
 UTILITY LINE LOCATION**

SHELL 797-14-01D PAD

DRG RIFFIN & ASSOCIATES, INC.
 (307) 362-5028 1414 ELK ST., ROCK SPRINGS, WY 82901

DRAWN: 2/12/2016 - DEH	SCALE: 1"=200'
REVISED: 12/12/2017 - DEH	DRG JOB No. 20991
REVISED WELL NAME/BHL LOC.	EXHIBIT 2D

LOCATION DRAWING

LARAMIE ENERGY, LLC
**SHELL 797-14-01D, TC 797-11-21W, 15-07E, 10-10E,
 10-21E, 14-01W**
**NWNW, SECTION 14, T. 7 S., R. 97 W., 6th P.M.,
 GARFIELD COUNTY, COLORADO**