

**R. 97 W.**

**TC 797-10-10E**

**GRADED ELEVATION:**

**8307.0'**

BASIS OF ELEVATION: USGS SPOT ELEVATION  
LOCATED AT THE NW CORNER OF SECTION 14,  
T7S, R97W  
ELEVATION: 8308'



GRID NORTH  
SCALE 1" = 1000'  
500' 0 1000'

**T. 7 S.**

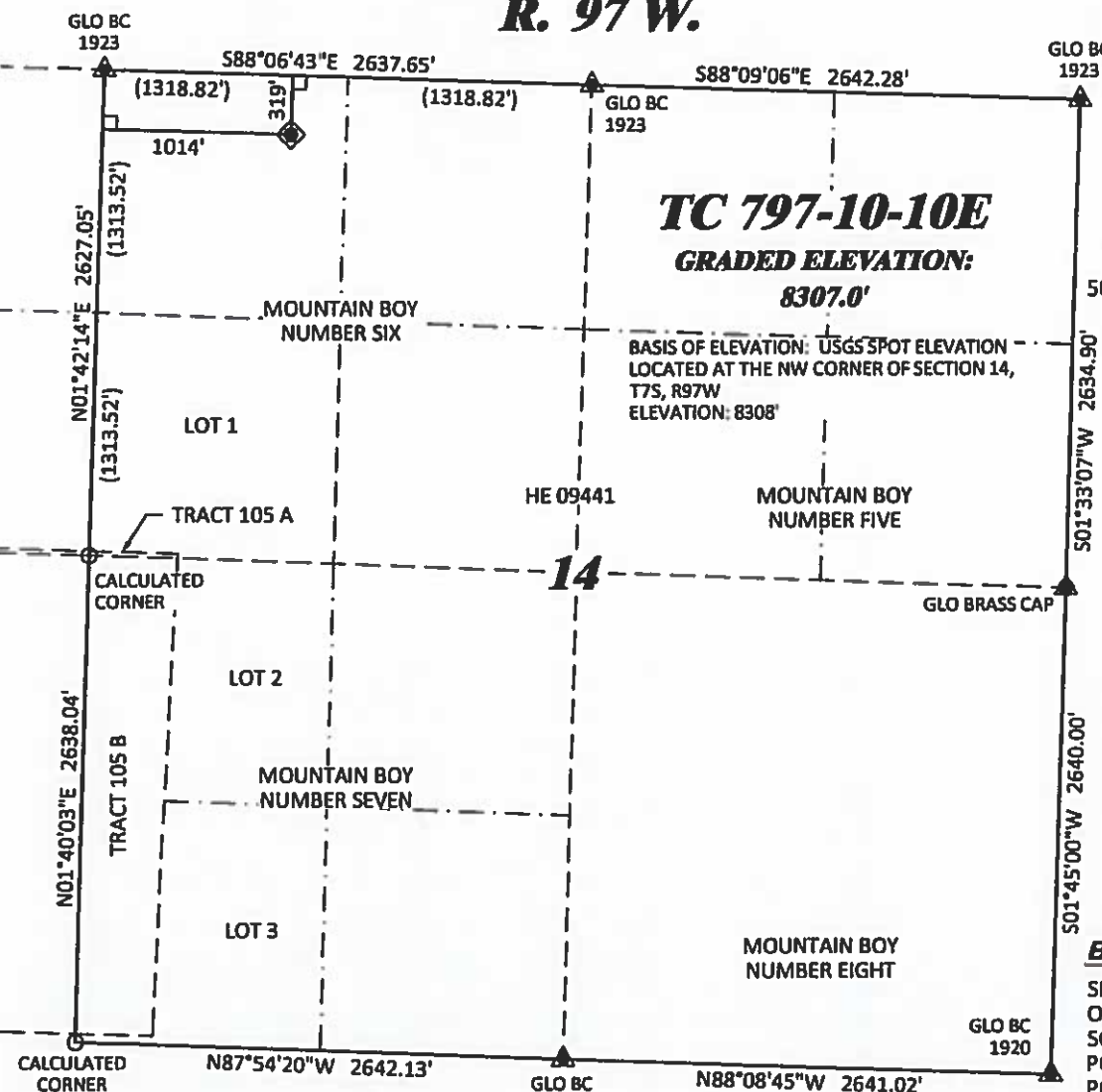
**SHL**

**LATITUDE (NAD 83)**  
NORTH 39.452004 DEG.  
**LONGITUDE (NAD 83)**  
WEST 108.193023 DEG.  
**NORTHING (NAD 83)**  
1600792.15  
**EASTING (NAD 83)**  
2239664.08

**BASIS OF BEARING/DATUM**

SPCS CO-C NAD 27 BASED ON GPS  
OBSERVATIONS AND OPUS  
SOLUTION ON DRG CONTROL  
POINT "NGS-SHALE" HAVING A  
POSITION OF:  
NAD83(2011)  
LAT 39° 26' 18.52" NORTH  
LONG 108° 10' 13.61" WEST  
NAVD88 ELEVATION: 2728.95

THE NORTH LINE OF THE NW¼ OF  
SECTION 14, MONUMENTED BY  
GLO BC'S AND BEARING  
S 88° 06' 43" E.



**NOTES**

1. GPS OPERATOR T. SHERRILL OBSERVED A PDOP OF 1.3.
2. ALL GPS OBSERVATIONS ARE IN COMPLIANCE WITH COGCC RULE No.215.
3. EXISTING IMPROVEMENTS WITHIN 500' OF LOCATION. SEE EXHIBIT 2D.
4. SURROUNDING SURFACE USE IS NATIVE BRUSH, NON CROP RANGELAND.

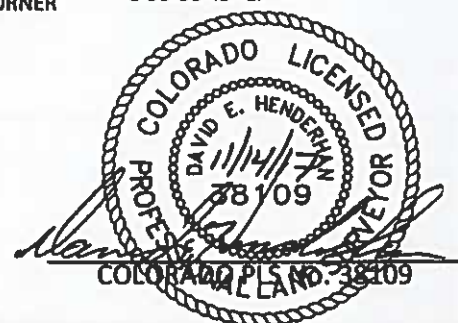
**SURVEYOR'S STATEMENT**

I, DAVID E. HENDERHAN, AN EMPLOYEE AND AGENT ON BEHALF OF D.R. GRIFFIN & ASSOCIATES, INC. STATE THE PLAT HEREON IS A CORRECT REPRESENTATION OF A SURVEY MADE UNDER MY SUPERVISION ON THE 13TH DAY OF NOVEMBER, 2017 OF THE SHOWN TC 797-10-10E AND THAT THE LOCATION HAS BEEN STAKED ON THE GROUND.

Notice: In accordance with Colorado State Law, any legal action based upon any defect in this survey plat must commence within three (3) years after first discovery of such defect. In no event, may any action based upon any defect in this survey plat be commenced more than ten (10) years from the date of certification shown hereon.

**LEGEND**

- ◆ WELL LOCATION
- APPROX. BHL/TOG
- L DENOTES 90° TIE
- ▲ PREVIOUSLY FOUND MONUMENT
- CALCULATED CORNER



**SHELL 797-14-01D PAD**



**DAVID E. HENDERHAN & ASSOCIATES, INC.**  
1414 ELK ST., ROCK SPRINGS, WY 82901

(307) 362-5026

DRAWN: 11/14/2017 - DEH

SCALE: 1" = 1000'

REVISED: N/A

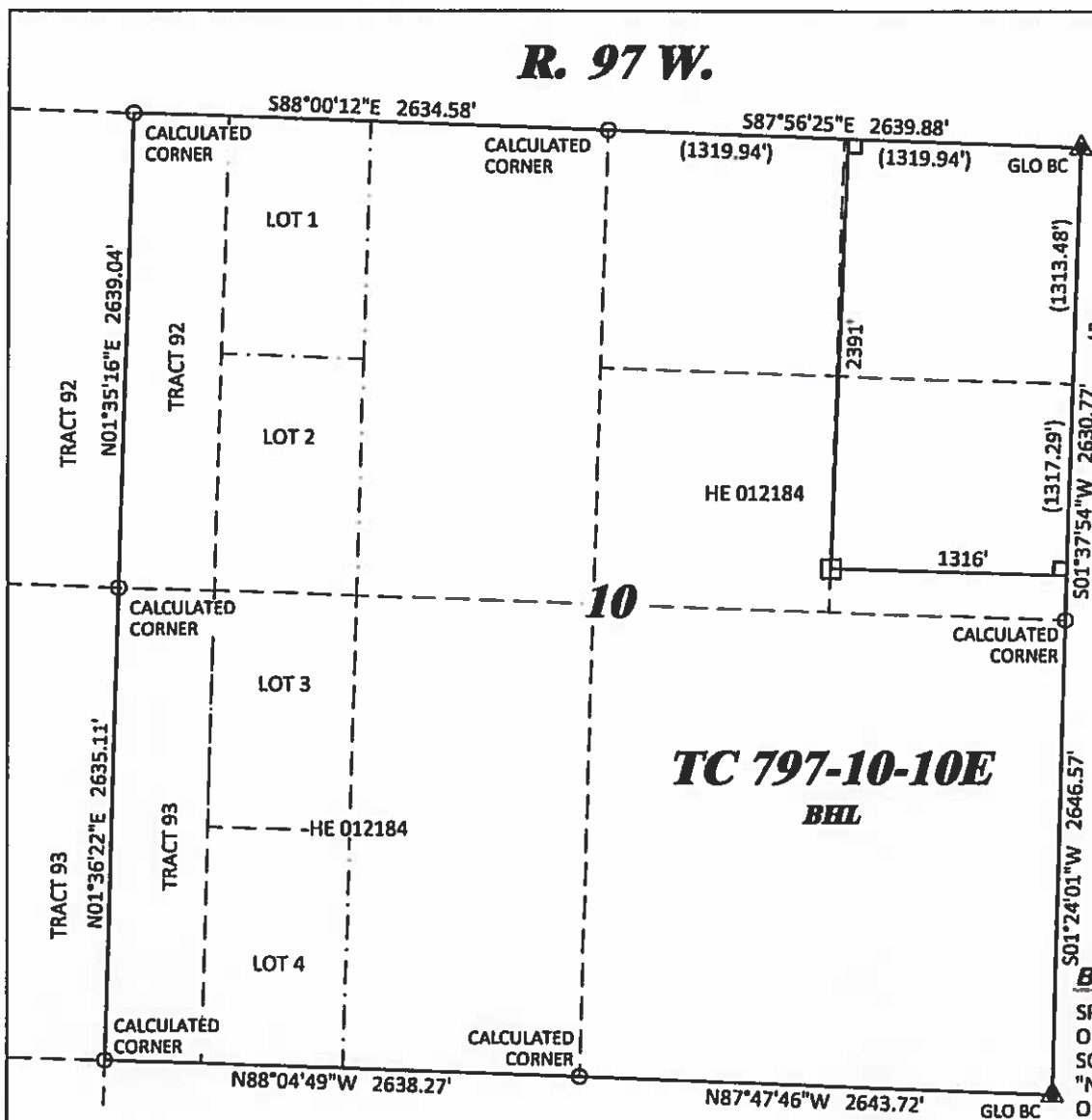
DRG JOB No. 20891

EXHIBIT 1-7

**PLAT OF DRILLING LOCATION IN  
NWNW, SECTION 14, FOR  
LARAMIE ENERGY, LLC**

**319' F/NL, & 1014' F/WL, SECTION 14,  
T. 7 S., R. 97 W., 6TH P.M.,  
GARFIELD COUNTY, COLORADO**

**R. 97 W.**



GRID NORTH  
SCALE 1" = 1000'  
500' 0 1000'

**T. 7 S.**

BHL  
LATITUDE (NAD 83)  
NORTH 39.460837 DEG.  
LONGITUDE (NAD 83)  
WEST 108.201325 DEG.  
NORTHING (NAD 83)  
1604078  
EASTING (NAD 83)  
2237416

**TC 797-10-10E**  
BHL

**BASIS OF BEARING/DATUM**

SPCS CO-C NAD 27 BASED ON GPS  
OBSERVATIONS AND OPUS  
SOLUTION ON DRG CONTROL POINT  
"NGS-SHALE" HAVING A POSITION  
OF:  
NAD83(2011)  
LAT 39° 26' 18.52" NORTH  
LONG 108° 10' 13.61" WEST  
NAVD88 ELEVATION: 2728.95

THE NORTH LINE OF THE NW¼ OF  
SECTION 14, MONUMENTED BY GLO  
BC'S AND BEARING  
S 88° 06' 43" E.

**LEGEND**

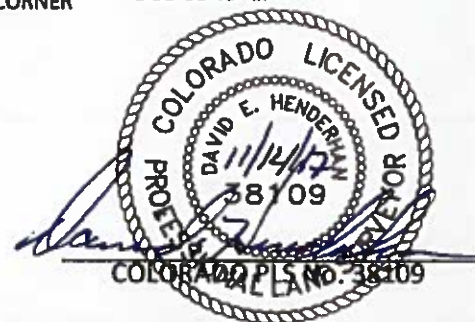
- ◆ WELL LOCATION
- APPROX. BHL/TOG
- L DENOTES 90° TIE
- ▲ PREVIOUSLY FOUND MONUMENT
- CALCULATED CORNER

**SURVEYOR'S STATEMENT**

I, DAVID E. HENDERHAN, AN EMPLOYEE AND AGENT ON BEHALF OF D.R. GRIFFIN & ASSOCIATES, INC. STATE THE PLAT HEREON IS A CORRECT REPRESENTATION OF A SURVEY MADE UNDER MY SUPERVISION ON THE 13TH DAY OF NOVEMBER, 2017 OF THE SHOWN TC 797-10-10E BOTTOM HOLE LOCATION.

Notice: In accordance with Colorado State Law, any legal action based upon any defect in this survey plat must commence within three (3) years after first discovery of such defect. In no event, may any action based upon any defect in this survey plat be commenced more than ten (10) years from the date of certification shown hereon.

**SHELL 797-14-01D PAD**



**DAVID E. GRIFFIN & ASSOCIATES, INC.**  
1414 ELK ST., ROCK SPRINGS, WY 82901

(307) 363-6028

DRAWN: 11/14/2017 - DEH

REVISED: N/A

REVISED BHL

SCALE: 1" = 1000'

DRG JOB No. 20091

EXHIBIT 1-8

**PLAT OF BOTTOM HOLE LOCATION IN  
SENE, SECTION 10, FOR  
LARAMIE ENERGY, LLC**

**2391' F/NL, & 1316' F/EL, SECTION 10,  
T. 7 S., R. 97 W., 6TH P.M.,  
GARFIELD COUNTY, COLORADO**