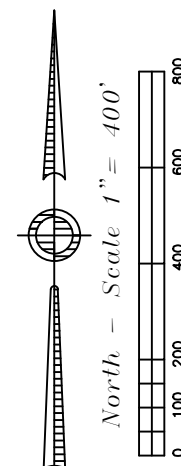
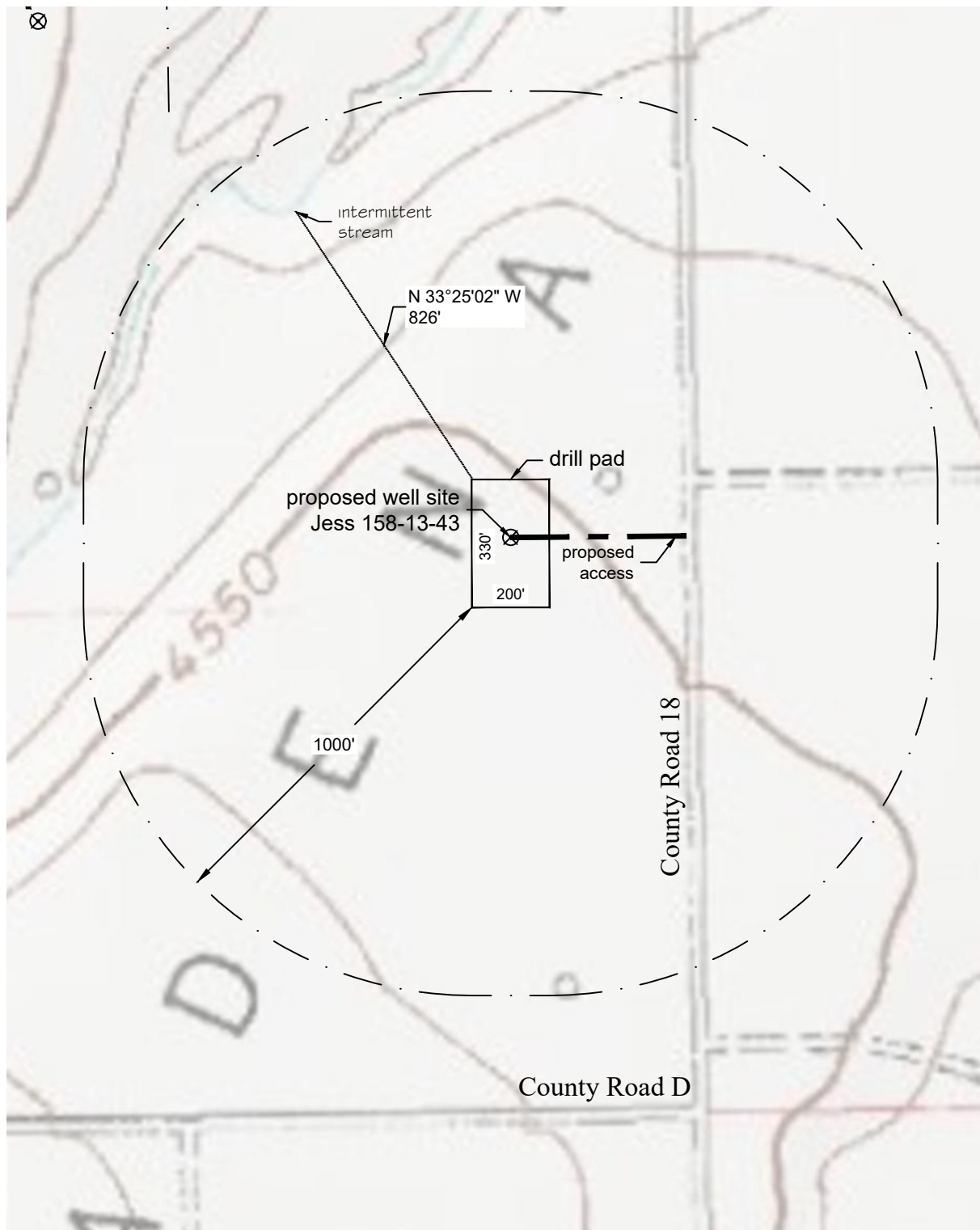


# Hydrology Map (1000')



P:\Project\2017\17135\dwg\17135\_Hyd.dwg February 12, 2018 - 10:48am

Well Name: <b>Jess 158-13-43</b>	Field Date <b>11.16.2017</b>	Prepared for: <b>Project# 17135.001</b>  <b>PCR Operating LLC</b>  PLS Group 6843 North Franklin Avenue Loveland, Colorado 80538 970.669.2100 office - 970.669.3652 fax
Section 13-T1N-R58W-6th PM, NE-SE	Party Chief <b>ADS</b>	
Morgan County, Colorado	Proj. Manager <b>ZNB</b>	
	Drawing Date <b>2.12.2018</b>	