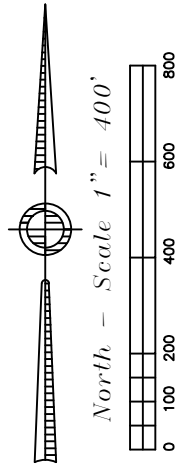
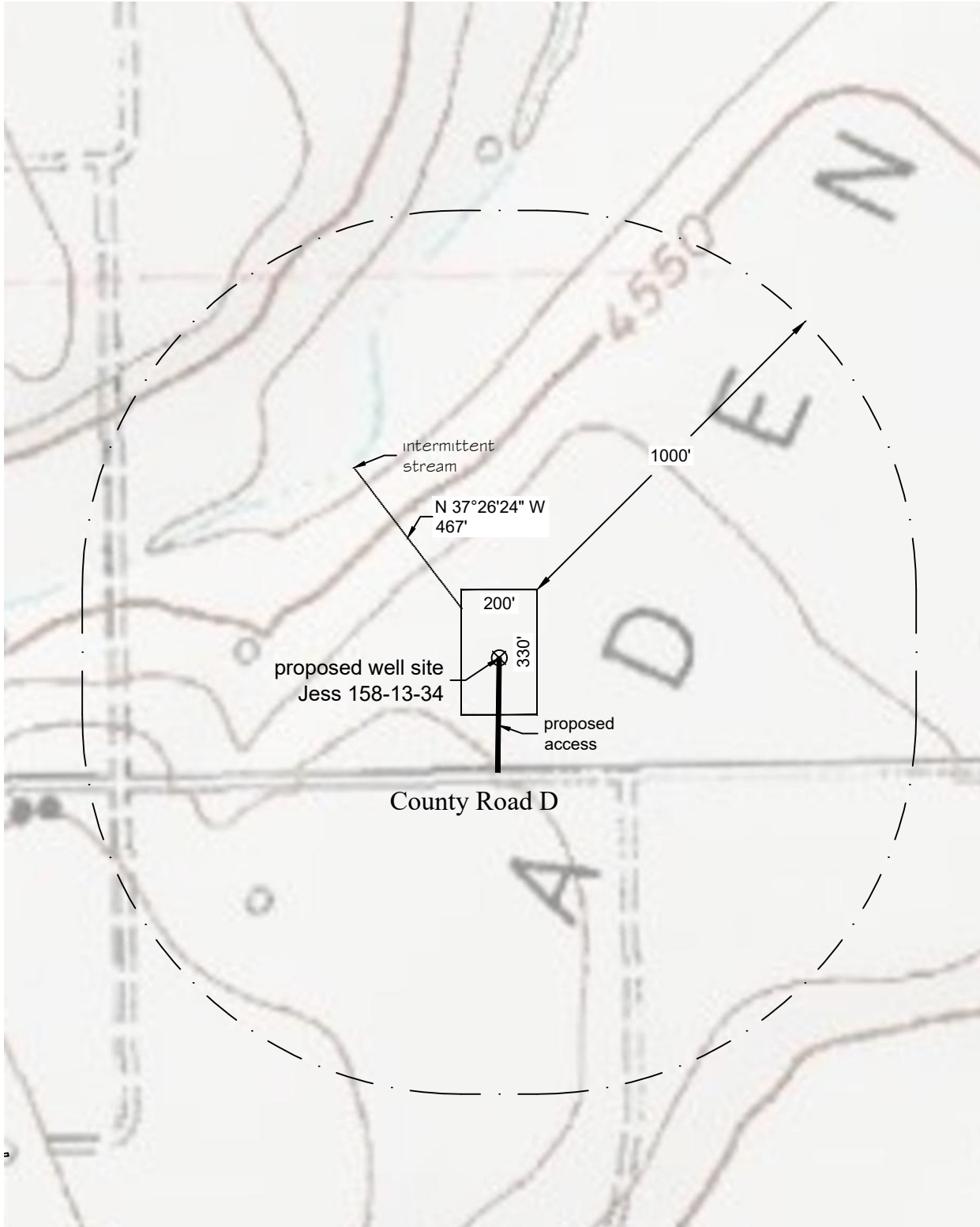


Hydrology Map (1000')



P:\Project\2017\17134\dwg\17134_Hyd.dwg February 13, 2018 - 9:24am

Well Name: Jess 158-13-34	Field Date 11.16.2017	Prepared for: Project#: 17134.001
Section 13-T1N-R58W-6th PM, SW-SE	Party Chief ADS	PCR Operating LLC PLS Group 6843 North Franklin Avenue Loveland, Colorado 80538 970.669.2100 office - 970.669.3652 fax
Morgan County, Colorado	Proj. Manager ZNB	
Drawing Date 2.12.2018		