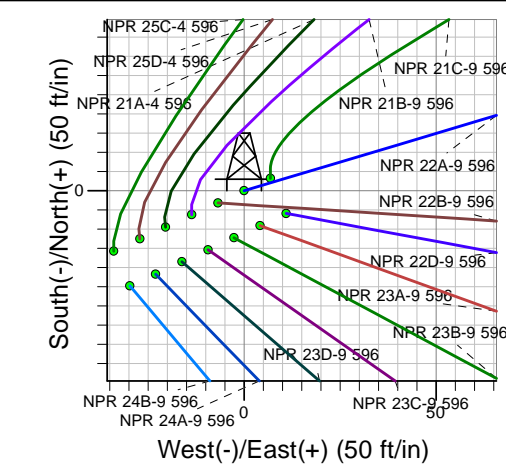
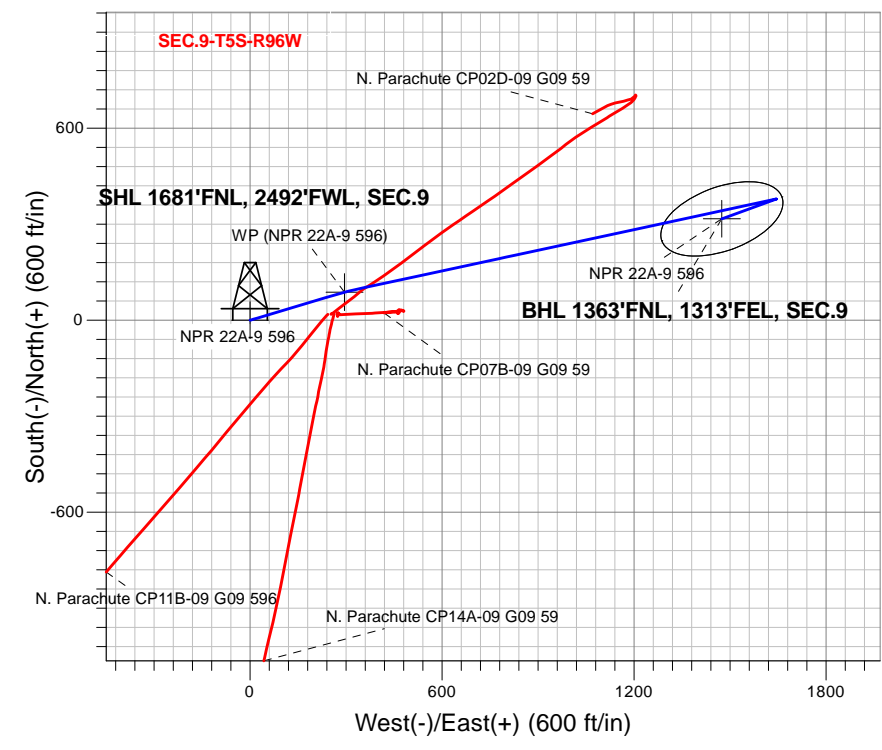
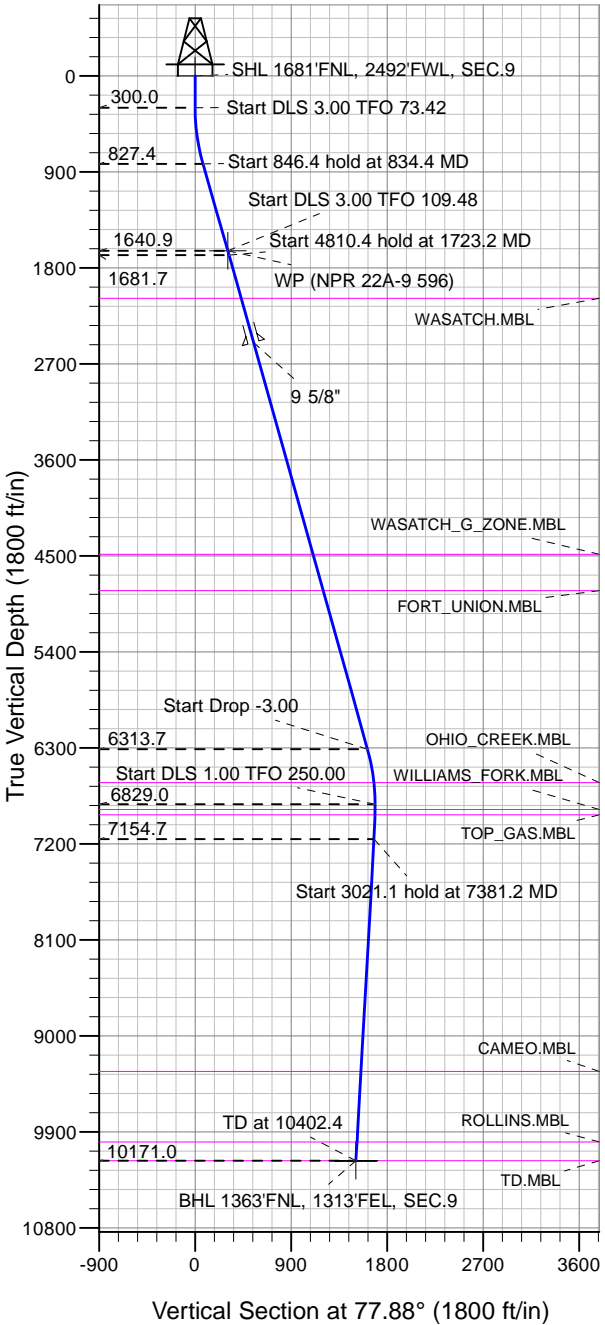


### Caerus Oil and Gas LLC



NPR 22A-9 596  
 Plan #1 (1-15-18)  
 15:13, January 18 2018

Azimuths to True North  
 Magnetic North: 9.63°

Magnetic Field  
 Strength: 51503.2snT  
 Dip Angle: 65.85°  
 Date: 1/18/2018  
 Model: HDGM

DESIGN TARGET DETAILS

Name	TVD	+N/-S	+E/-W	Latitude	Longitude	Shape
SHL 1681'FNL, 2492'FWL, SEC.9	1.0	0.0	0.0	39.632226	-108.174049	Point
WP (NPR 22A-9 596)	1640.9	87.9	295.2	39.632467	-108.173001	Point
BHL 1363'FNL, 1313'FEL, SEC.9	10171.0	316.6	1474.3	39.633095	-108.168815	Ellipse (Radii: L200.0 W100.0)

SECTION DETAILS

Sec	MD	Inc	Azi	TVD	+N/-S	+E/-W	Dleg	TFace	VSect	Target
1	0.0	0.00	0.00	0.0	0.0	0.0	0.00	0.00	0.0	
2	300.0	0.00	0.00	300.0	0.0	0.0	0.00	0.00	0.0	
3	834.4	16.03	73.42	827.4	21.2	71.2	3.00	73.42	74.0	
4	1680.8	16.03	73.42	1640.9	87.9	295.2	0.00	0.00	307.1	WP (NPR 22A-9 596)
5	1723.2	15.65	77.86	1681.7	90.8	306.4	3.00	109.48	318.6	
6	6533.6	15.65	77.86	6313.7	363.6	1575.2	0.00	0.00	1616.4	
7	7055.3	0.00	0.00	6829.0	378.5	1644.4	3.00	180.00	1687.2	
8	7381.2	3.26	250.00	7154.7	375.3	1635.7	1.00	250.00	1678.0	
9	10402.4	3.26	250.00	10171.0	316.6	1474.3	0.00	0.00	1507.9	BHL 1363'FNL, 1313'FEL, SEC.9



## **Directional**

### **Caerus Oil and Gas LLC**

**SEC.9-T5S-R96W**

**NPR G09 596 Pad Sec.9-T5S-R96W**

**NPR 22A-9 596**

**Wellbore #1**

**Plan: Plan #1 (1-15-18)**

### **Standard Planning Report**

**18 January, 2018**

<b>Database:</b>	US_EDM	<b>Local Co-ordinate Reference:</b>	Well NPR 22A-9 596
<b>Company:</b>	Caerus Oil and Gas LLC	<b>TVD Reference:</b>	WELL @ 7670.0ft (Original Well Elev)
<b>Project:</b>	SEC.9-T5S-R96W	<b>MD Reference:</b>	WELL @ 7670.0ft (Original Well Elev)
<b>Site:</b>	NPR G09 596 Pad Sec.9-T5S-R96W	<b>North Reference:</b>	True
<b>Well:</b>	NPR 22A-9 596	<b>Survey Calculation Method:</b>	Minimum Curvature
<b>Wellbore:</b>	Wellbore #1		
<b>Design:</b>	Plan #1 (1-15-18)		

<b>Project</b>	SEC.9-T5S-R96W, Garfield County, CO		
<b>Map System:</b>	Universal Transverse Mercator (US Survey Feet)	<b>System Datum:</b>	Mean Sea Level
<b>Geo Datum:</b>	NAD 1927 - Western US		Using Well Reference Point
<b>Map Zone:</b>	Zone 12N (114 W to 108 W)		Using geodetic scale factor

<b>Site</b>	NPR G09 596 Pad Sec.9-T5S-R96W				
<b>Site Position:</b>	<b>Northing:</b>	14,404,590.33 usft	<b>Latitude:</b>	39.632067	
<b>From:</b>	Lat/Long	<b>Easting:</b>	2,436,015.01 usft	<b>Longitude:</b>	-108.174492
<b>Position Uncertainty:</b>	0.0 ft	<b>Slot Radius:</b>	13-3/16 "	<b>Grid Convergence:</b>	1.80 °

<b>Well</b>	NPR 22A-9 596					
<b>Well Position</b>	<b>+N/-S</b>	57.8 ft	<b>Northing:</b>	14,404,652.09 usft	<b>Latitude:</b>	39.632226
	<b>+E/-W</b>	124.7 ft	<b>Easting:</b>	2,436,137.86 usft	<b>Longitude:</b>	-108.174049
<b>Position Uncertainty</b>		0.0 ft	<b>Wellhead Elevation:</b>	0.0 ft	<b>Ground Level:</b>	7,640.0 ft

<b>Wellbore</b>	Wellbore #1				
<b>Magnetics</b>	<b>Model Name</b>	<b>Sample Date</b>	<b>Declination (°)</b>	<b>Dip Angle (°)</b>	<b>Field Strength (nT)</b>
	HDGM	1/18/2018	9.63	65.85	51,503

<b>Design</b>	Plan #1 (1-15-18)			
<b>Audit Notes:</b>				
<b>Version:</b>	<b>Phase:</b>	PROTOTYPE	<b>Tie On Depth:</b>	0.0
<b>Vertical Section:</b>	<b>Depth From (TVD) (ft)</b>	<b>+N/-S (ft)</b>	<b>+E/-W (ft)</b>	<b>Direction (°)</b>
	0.0	0.0	0.0	77.88

<b>Plan Sections</b>										
Measured Depth (ft)	Inclination (°)	Azimuth (°)	Vertical Depth (ft)	+N/-S (ft)	+E/-W (ft)	Dogleg Rate (°/100usft)	Build Rate (°/100usft)	Turn Rate (°/100usft)	TFO (°)	Target
0.0	0.00	0.00	0.0	0.0	0.0	0.00	0.00	0.00	0.00	
300.0	0.00	0.00	300.0	0.0	0.0	0.00	0.00	0.00	0.00	
834.4	16.03	73.42	827.4	21.2	71.2	3.00	3.00	13.74	73.42	
1,680.8	16.03	73.42	1,640.9	87.9	295.2	0.00	0.00	0.00	0.00	WP (NPR 22A-9 596)
1,723.2	15.65	77.86	1,681.7	90.8	306.4	3.00	-0.89	10.49	109.48	
6,533.6	15.65	77.86	6,313.7	363.6	1,575.2	0.00	0.00	0.00	0.00	
7,055.3	0.00	0.00	6,829.0	378.5	1,644.4	3.00	-3.00	0.00	180.00	
7,381.2	3.26	250.00	7,154.7	375.3	1,635.7	1.00	1.00	-33.75	250.00	
10,402.4	3.26	250.00	10,171.0	316.6	1,474.3	0.00	0.00	0.00	0.00	BHL 1363'FNL, 1313'

<b>Database:</b>	US_EDM	<b>Local Co-ordinate Reference:</b>	Well NPR 22A-9 596
<b>Company:</b>	Caerus Oil and Gas LLC	<b>TVD Reference:</b>	WELL @ 7670.0ft (Original Well Elev)
<b>Project:</b>	SEC.9-T5S-R96W	<b>MD Reference:</b>	WELL @ 7670.0ft (Original Well Elev)
<b>Site:</b>	NPR G09 596 Pad Sec.9-T5S-R96W	<b>North Reference:</b>	True
<b>Well:</b>	NPR 22A-9 596	<b>Survey Calculation Method:</b>	Minimum Curvature
<b>Wellbore:</b>	Wellbore #1		
<b>Design:</b>	Plan #1 (1-15-18)		

Planned Survey										
Measured Depth (ft)	Inclination (°)	Azimuth (°)	Vertical Depth (ft)	+N/-S (ft)	+E/-W (ft)	Vertical Section (ft)	Dogleg Rate (°/100usft)	Build Rate (°/100usft)	Turn Rate (°/100usft)	
0.0	0.00	0.00	0.0	0.0	0.0	0.0	0.00	0.00	0.00	
1.0	0.00	0.00	1.0	0.0	0.0	0.0	0.00	0.00	0.00	
<b>SHL 1681'FNL, 2492'FWL, SEC.9</b>										
100.0	0.00	0.00	100.0	0.0	0.0	0.0	0.00	0.00	0.00	
200.0	0.00	0.00	200.0	0.0	0.0	0.0	0.00	0.00	0.00	
300.0	0.00	0.00	300.0	0.0	0.0	0.0	0.00	0.00	0.00	
400.0	3.00	73.42	400.0	0.7	2.5	2.6	3.00	3.00	0.00	
500.0	6.00	73.42	499.6	3.0	10.0	10.4	3.00	3.00	0.00	
600.0	9.00	73.42	598.8	6.7	22.5	23.4	3.00	3.00	0.00	
700.0	12.00	73.42	697.1	11.9	40.0	41.6	3.00	3.00	0.00	
800.0	15.00	73.42	794.3	18.6	62.4	64.9	3.00	3.00	0.00	
834.4	16.03	73.42	827.4	21.2	71.2	74.0	3.00	3.00	0.00	
900.0	16.03	73.42	890.5	26.4	88.6	92.1	0.00	0.00	0.00	
1,000.0	16.03	73.42	986.6	34.2	115.0	119.6	0.00	0.00	0.00	
1,100.0	16.03	73.42	1,082.7	42.1	141.5	147.2	0.00	0.00	0.00	
1,200.0	16.03	73.42	1,178.8	50.0	168.0	174.7	0.00	0.00	0.00	
1,300.0	16.03	73.42	1,274.9	57.9	194.4	202.2	0.00	0.00	0.00	
1,400.0	16.03	73.42	1,371.1	65.8	220.9	229.8	0.00	0.00	0.00	
1,500.0	16.03	73.42	1,467.2	73.7	247.4	257.3	0.00	0.00	0.00	
1,600.0	16.03	73.42	1,563.3	81.5	273.8	284.8	0.00	0.00	0.00	
1,680.8	16.03	73.42	1,640.9	87.9	295.2	307.1	0.00	0.00	0.00	
<b>WP (NPR 22A-9 596)</b>										
1,700.0	15.85	75.41	1,659.4	89.3	300.3	312.3	3.00	-0.95	10.36	
1,723.2	15.65	77.86	1,681.7	90.8	306.4	318.6	3.00	-0.85	10.60	
1,800.0	15.65	77.86	1,755.7	95.1	326.7	339.4	0.00	0.00	0.00	
1,900.0	15.65	77.86	1,852.0	100.8	353.0	366.3	0.00	0.00	0.00	
2,000.0	15.65	77.86	1,948.3	106.5	379.4	393.3	0.00	0.00	0.00	
2,100.0	15.65	77.86	2,044.6	112.1	405.8	420.3	0.00	0.00	0.00	
2,143.0	15.65	77.86	2,086.0	114.6	417.1	431.9	0.00	0.00	0.00	
<b>WASATCH.MBL</b>										
2,200.0	15.65	77.86	2,140.9	117.8	432.2	447.3	0.00	0.00	0.00	
2,300.0	15.65	77.86	2,237.1	123.5	458.5	474.2	0.00	0.00	0.00	
2,400.0	15.65	77.86	2,333.4	129.2	484.9	501.2	0.00	0.00	0.00	
2,500.0	15.65	77.86	2,429.7	134.8	511.3	528.2	0.00	0.00	0.00	
2,573.0	15.65	77.86	2,500.0	139.0	530.5	547.9	0.00	0.00	0.00	
<b>9 5/8"</b>										
2,600.0	15.65	77.86	2,526.0	140.5	537.7	555.2	0.00	0.00	0.00	
2,700.0	15.65	77.86	2,622.3	146.2	564.0	582.2	0.00	0.00	0.00	
2,800.0	15.65	77.86	2,718.6	151.8	590.4	609.1	0.00	0.00	0.00	
2,900.0	15.65	77.86	2,814.9	157.5	616.8	636.1	0.00	0.00	0.00	
3,000.0	15.65	77.86	2,911.2	163.2	643.2	663.1	0.00	0.00	0.00	
3,100.0	15.65	77.86	3,007.5	168.9	669.5	690.1	0.00	0.00	0.00	
3,200.0	15.65	77.86	3,103.8	174.5	695.9	717.1	0.00	0.00	0.00	
3,300.0	15.65	77.86	3,200.1	180.2	722.3	744.0	0.00	0.00	0.00	
3,400.0	15.65	77.86	3,296.4	185.9	748.7	771.0	0.00	0.00	0.00	
3,500.0	15.65	77.86	3,392.7	191.6	775.0	798.0	0.00	0.00	0.00	
3,600.0	15.65	77.86	3,488.9	197.2	801.4	825.0	0.00	0.00	0.00	
3,700.0	15.65	77.86	3,585.2	202.9	827.8	851.9	0.00	0.00	0.00	
3,800.0	15.65	77.86	3,681.5	208.6	854.2	878.9	0.00	0.00	0.00	
3,900.0	15.65	77.86	3,777.8	214.2	880.5	905.9	0.00	0.00	0.00	
4,000.0	15.65	77.86	3,874.1	219.9	906.9	932.9	0.00	0.00	0.00	
4,100.0	15.65	77.86	3,970.4	225.6	933.3	959.9	0.00	0.00	0.00	
4,200.0	15.65	77.86	4,066.7	231.3	959.7	986.8	0.00	0.00	0.00	
4,300.0	15.65	77.86	4,163.0	236.9	986.0	1,013.8	0.00	0.00	0.00	

<b>Database:</b>	US_EDM	<b>Local Co-ordinate Reference:</b>	Well NPR 22A-9 596
<b>Company:</b>	Caerus Oil and Gas LLC	<b>TVD Reference:</b>	WELL @ 7670.0ft (Original Well Elev)
<b>Project:</b>	SEC.9-T5S-R96W	<b>MD Reference:</b>	WELL @ 7670.0ft (Original Well Elev)
<b>Site:</b>	NPR G09 596 Pad Sec.9-T5S-R96W	<b>North Reference:</b>	True
<b>Well:</b>	NPR 22A-9 596	<b>Survey Calculation Method:</b>	Minimum Curvature
<b>Wellbore:</b>	Wellbore #1		
<b>Design:</b>	Plan #1 (1-15-18)		

Planned Survey									
Measured Depth (ft)	Inclination (°)	Azimuth (°)	Vertical Depth (ft)	+N/-S (ft)	+E/-W (ft)	Vertical Section (ft)	Dogleg Rate (°/100usft)	Build Rate (°/100usft)	Turn Rate (°/100usft)
4,400.0	15.65	77.86	4,259.3	242.6	1,012.4	1,040.8	0.00	0.00	0.00
4,500.0	15.65	77.86	4,355.6	248.3	1,038.8	1,067.8	0.00	0.00	0.00
4,600.0	15.65	77.86	4,451.9	253.9	1,065.2	1,094.8	0.00	0.00	0.00
4,635.5	15.65	77.86	4,486.0	256.0	1,074.5	1,104.3	0.00	0.00	0.00
<b>WASATCH_G_ZONE.MBL</b>									
4,700.0	15.65	77.86	4,548.2	259.6	1,091.6	1,121.7	0.00	0.00	0.00
4,800.0	15.65	77.86	4,644.4	265.3	1,117.9	1,148.7	0.00	0.00	0.00
4,900.0	15.65	77.86	4,740.7	271.0	1,144.3	1,175.7	0.00	0.00	0.00
4,989.6	15.65	77.86	4,827.0	276.0	1,167.9	1,199.9	0.00	0.00	0.00
<b>FORT_UNION.MBL</b>									
5,000.0	15.65	77.86	4,837.0	276.6	1,170.7	1,202.7	0.00	0.00	0.00
5,100.0	15.65	77.86	4,933.3	282.3	1,197.1	1,229.6	0.00	0.00	0.00
5,200.0	15.65	77.86	5,029.6	288.0	1,223.4	1,256.6	0.00	0.00	0.00
5,300.0	15.65	77.86	5,125.9	293.6	1,249.8	1,283.6	0.00	0.00	0.00
5,400.0	15.65	77.86	5,222.2	299.3	1,276.2	1,310.6	0.00	0.00	0.00
5,500.0	15.65	77.86	5,318.5	305.0	1,302.6	1,337.6	0.00	0.00	0.00
5,600.0	15.65	77.86	5,414.8	310.7	1,328.9	1,364.5	0.00	0.00	0.00
5,700.0	15.65	77.86	5,511.1	316.3	1,355.3	1,391.5	0.00	0.00	0.00
5,800.0	15.65	77.86	5,607.4	322.0	1,381.7	1,418.5	0.00	0.00	0.00
5,900.0	15.65	77.86	5,703.7	327.7	1,408.1	1,445.5	0.00	0.00	0.00
6,000.0	15.65	77.86	5,800.0	333.3	1,434.4	1,472.4	0.00	0.00	0.00
6,100.0	15.65	77.86	5,896.2	339.0	1,460.8	1,499.4	0.00	0.00	0.00
6,200.0	15.65	77.86	5,992.5	344.7	1,487.2	1,526.4	0.00	0.00	0.00
6,300.0	15.65	77.86	6,088.8	350.4	1,513.6	1,553.4	0.00	0.00	0.00
6,400.0	15.65	77.86	6,185.1	356.0	1,539.9	1,580.4	0.00	0.00	0.00
6,500.0	15.65	77.86	6,281.4	361.7	1,566.3	1,607.3	0.00	0.00	0.00
6,533.6	15.65	77.86	6,313.7	363.6	1,575.2	1,616.4	0.00	0.00	0.00
6,600.0	13.66	77.86	6,378.0	367.1	1,591.6	1,633.2	3.00	-3.00	0.00
6,700.0	10.66	77.86	6,475.7	371.6	1,612.2	1,654.3	3.00	-3.00	0.00
6,800.0	7.66	77.86	6,574.5	374.9	1,627.7	1,670.2	3.00	-3.00	0.00
6,851.9	6.10	77.86	6,626.0	376.2	1,633.8	1,676.4	3.00	-3.00	0.00
<b>OHIO_CREEK.MBL</b>									
6,900.0	4.66	77.86	6,673.9	377.2	1,638.2	1,680.9	3.00	-3.00	0.00
7,000.0	1.66	77.86	6,773.7	378.3	1,643.6	1,686.4	3.00	-3.00	0.00
7,055.3	0.00	0.00	6,829.0	378.5	1,644.4	1,687.2	3.00	-3.00	0.00
7,100.0	0.45	250.00	6,873.7	378.4	1,644.2	1,687.0	1.00	1.00	0.00
7,105.3	0.50	250.00	6,879.0	378.4	1,644.2	1,687.0	1.00	1.00	0.00
<b>WILLIAMS_FORK.MBL</b>									
7,155.3	1.00	250.00	6,929.0	378.2	1,643.6	1,686.4	1.00	1.00	0.00
<b>TOP_GAS.MBL</b>									
7,200.0	1.45	250.00	6,973.7	377.9	1,642.7	1,685.4	1.00	1.00	0.00
7,300.0	2.45	250.00	7,073.6	376.7	1,639.5	1,682.0	1.00	1.00	0.00
7,381.2	3.26	250.00	7,154.7	375.3	1,635.7	1,678.0	1.00	1.00	0.00
7,400.0	3.26	250.00	7,173.5	375.0	1,634.7	1,677.0	0.00	0.00	0.00
7,500.0	3.26	250.00	7,273.3	373.0	1,629.3	1,671.3	0.00	0.00	0.00
7,600.0	3.26	250.00	7,373.2	371.1	1,624.0	1,665.7	0.00	0.00	0.00
7,700.0	3.26	250.00	7,473.0	369.1	1,618.7	1,660.1	0.00	0.00	0.00
7,800.0	3.26	250.00	7,572.8	367.2	1,613.3	1,654.5	0.00	0.00	0.00
7,900.0	3.26	250.00	7,672.7	365.2	1,608.0	1,648.8	0.00	0.00	0.00
8,000.0	3.26	250.00	7,772.5	363.3	1,602.6	1,643.2	0.00	0.00	0.00
8,100.0	3.26	250.00	7,872.4	361.4	1,597.3	1,637.6	0.00	0.00	0.00
8,200.0	3.26	250.00	7,972.2	359.4	1,591.9	1,631.9	0.00	0.00	0.00
8,300.0	3.26	250.00	8,072.0	357.5	1,586.6	1,626.3	0.00	0.00	0.00

<b>Database:</b>	US_EDM	<b>Local Co-ordinate Reference:</b>	Well NPR 22A-9 596
<b>Company:</b>	Caerus Oil and Gas LLC	<b>TVD Reference:</b>	WELL @ 7670.0ft (Original Well Elev)
<b>Project:</b>	SEC.9-T5S-R96W	<b>MD Reference:</b>	WELL @ 7670.0ft (Original Well Elev)
<b>Site:</b>	NPR G09 596 Pad Sec.9-T5S-R96W	<b>North Reference:</b>	True
<b>Well:</b>	NPR 22A-9 596	<b>Survey Calculation Method:</b>	Minimum Curvature
<b>Wellbore:</b>	Wellbore #1		
<b>Design:</b>	Plan #1 (1-15-18)		

Planned Survey										
Measured Depth (ft)	Inclination (°)	Azimuth (°)	Vertical Depth (ft)	+N/-S (ft)	+E/-W (ft)	Vertical Section (ft)	Dogleg Rate (°/100usft)	Build Rate (°/100usft)	Turn Rate (°/100usft)	
8,400.0	3.26	250.00	8,171.9	355.5	1,581.3	1,620.7	0.00	0.00	0.00	
8,500.0	3.26	250.00	8,271.7	353.6	1,575.9	1,615.0	0.00	0.00	0.00	
8,600.0	3.26	250.00	8,371.6	351.6	1,570.6	1,609.4	0.00	0.00	0.00	
8,700.0	3.26	250.00	8,471.4	349.7	1,565.2	1,603.8	0.00	0.00	0.00	
8,800.0	3.26	250.00	8,571.2	347.7	1,559.9	1,598.1	0.00	0.00	0.00	
8,900.0	3.26	250.00	8,671.1	345.8	1,554.6	1,592.5	0.00	0.00	0.00	
9,000.0	3.26	250.00	8,770.9	343.9	1,549.2	1,586.9	0.00	0.00	0.00	
9,100.0	3.26	250.00	8,870.7	341.9	1,543.9	1,581.2	0.00	0.00	0.00	
9,200.0	3.26	250.00	8,970.6	340.0	1,538.5	1,575.6	0.00	0.00	0.00	
9,300.0	3.26	250.00	9,070.4	338.0	1,533.2	1,570.0	0.00	0.00	0.00	
9,400.0	3.26	250.00	9,170.3	336.1	1,527.8	1,564.3	0.00	0.00	0.00	
9,500.0	3.26	250.00	9,270.1	334.1	1,522.5	1,558.7	0.00	0.00	0.00	
9,563.0	3.26	250.00	9,333.0	332.9	1,519.1	1,555.2	0.00	0.00	0.00	
<b>CAMEO.MBL</b>										
9,600.0	3.26	250.00	9,369.9	332.2	1,517.2	1,553.1	0.00	0.00	0.00	
9,700.0	3.26	250.00	9,469.8	330.2	1,511.8	1,547.5	0.00	0.00	0.00	
9,800.0	3.26	250.00	9,569.6	328.3	1,506.5	1,541.8	0.00	0.00	0.00	
9,900.0	3.26	250.00	9,669.5	326.3	1,501.1	1,536.2	0.00	0.00	0.00	
10,000.0	3.26	250.00	9,769.3	324.4	1,495.8	1,530.6	0.00	0.00	0.00	
10,100.0	3.26	250.00	9,869.1	322.5	1,490.4	1,524.9	0.00	0.00	0.00	
10,200.0	3.26	250.00	9,969.0	320.5	1,485.1	1,519.3	0.00	0.00	0.00	
10,227.1	3.26	250.00	9,996.0	320.0	1,483.7	1,517.8	0.00	0.00	0.00	
<b>ROLLINS.MBL</b>										
10,300.0	3.26	250.00	10,068.8	318.6	1,479.8	1,513.7	0.00	0.00	0.00	
10,400.0	3.26	250.00	10,168.6	316.6	1,474.4	1,508.0	0.00	0.00	0.00	
10,402.4	3.26	250.00	10,171.0	316.6	1,474.3	1,507.9	0.00	0.00	0.00	
<b>TD.MBL - BHL 1363'FNL, 1313'FEL, SEC.9</b>										

Design Targets										
Target Name	Dip Angle (°)	Dip Dir. (°)	TVD (ft)	+N/-S (ft)	+E/-W (ft)	Northing (usft)	Easting (usft)	Latitude	Longitude	
SHL 1681'FNL, 2492'FW - hit/miss target - Shape - Point	0.00	0.00	1.0	0.0	0.0	14,404,652.09	2,436,137.86	39.632226	-108.174049	
WP (NPR 22A-9 596) - plan hits target center - Point	0.00	0.00	1,640.9	87.9	295.2	14,404,749.27	2,436,430.24	39.632467	-108.173001	
BHL 1363'FNL, 1313'FE - plan hits target center - Ellipse (radii L200.0 W100.0 on 250.0 azi)	0.00	0.00	10,171.0	316.6	1,474.3	14,405,015.03	2,437,601.93	39.633095	-108.168815	

Casing Points					
Measured Depth (ft)	Vertical Depth (ft)	Name	Casing Diameter (")	Hole Diameter (")	
2,573.0	2,500.0	9 5/8"	9-5/8	12-1/4	

<b>Database:</b>	US_EDM	<b>Local Co-ordinate Reference:</b>	Well NPR 22A-9 596
<b>Company:</b>	Caerus Oil and Gas LLC	<b>TVD Reference:</b>	WELL @ 7670.0ft (Original Well Elev)
<b>Project:</b>	SEC.9-T5S-R96W	<b>MD Reference:</b>	WELL @ 7670.0ft (Original Well Elev)
<b>Site:</b>	NPR G09 596 Pad Sec.9-T5S-R96W	<b>North Reference:</b>	True
<b>Well:</b>	NPR 22A-9 596	<b>Survey Calculation Method:</b>	Minimum Curvature
<b>Wellbore:</b>	Wellbore #1		
<b>Design:</b>	Plan #1 (1-15-18)		

Formations						
Measured Depth (ft)	Vertical Depth (ft)	Name	Lithology	Dip (°)	Dip Direction (°)	
2,143.0	2,086.0	WASATCH.MBL		0.00		
4,635.5	4,486.0	WASATCH_G_ZONE.MBL		0.00		
4,989.6	4,827.0	FORT_UNION.MBL		0.00		
6,851.9	6,626.0	OHIO_CREEK.MBL		0.00		
7,105.3	6,879.0	WILLIAMS_FORK.MBL		0.00		
7,155.3	6,929.0	TOP_GAS.MBL		0.00		
9,563.0	9,333.0	CAMEO.MBL		0.00		
10,227.1	9,996.0	ROLLINS.MBL		0.00		
10,402.4	10,171.0	TD.MBL		0.00		