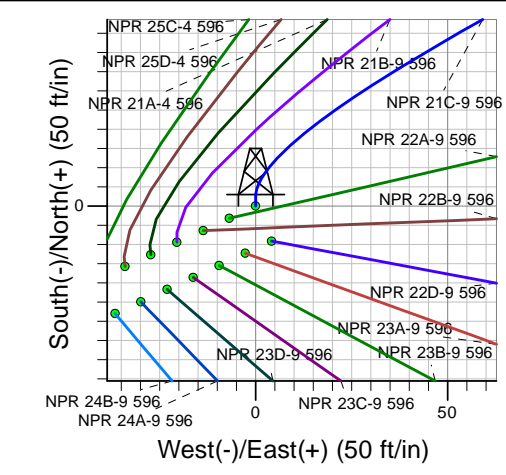
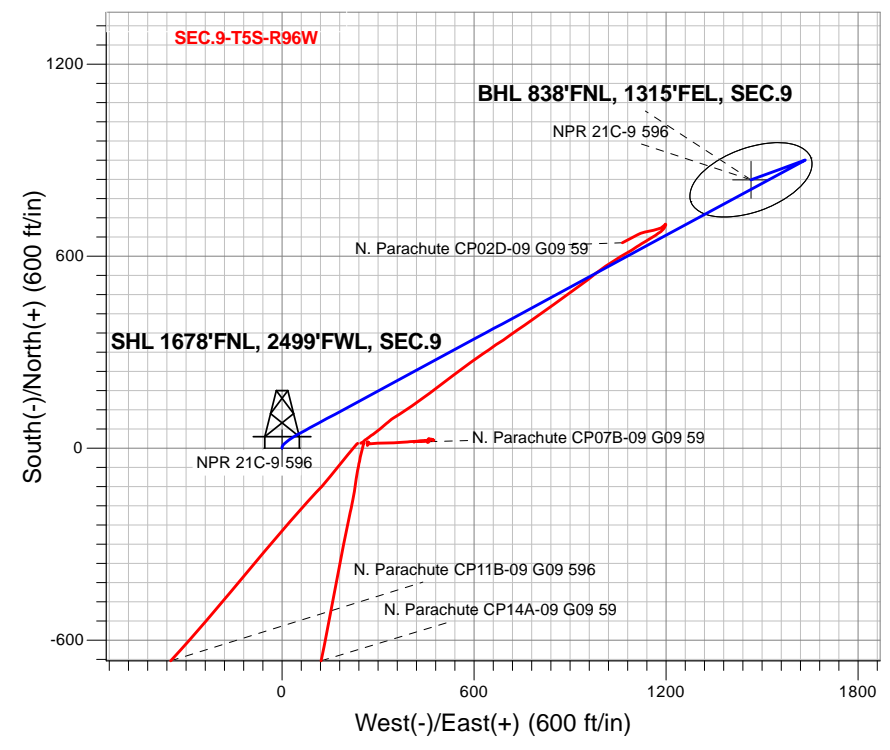
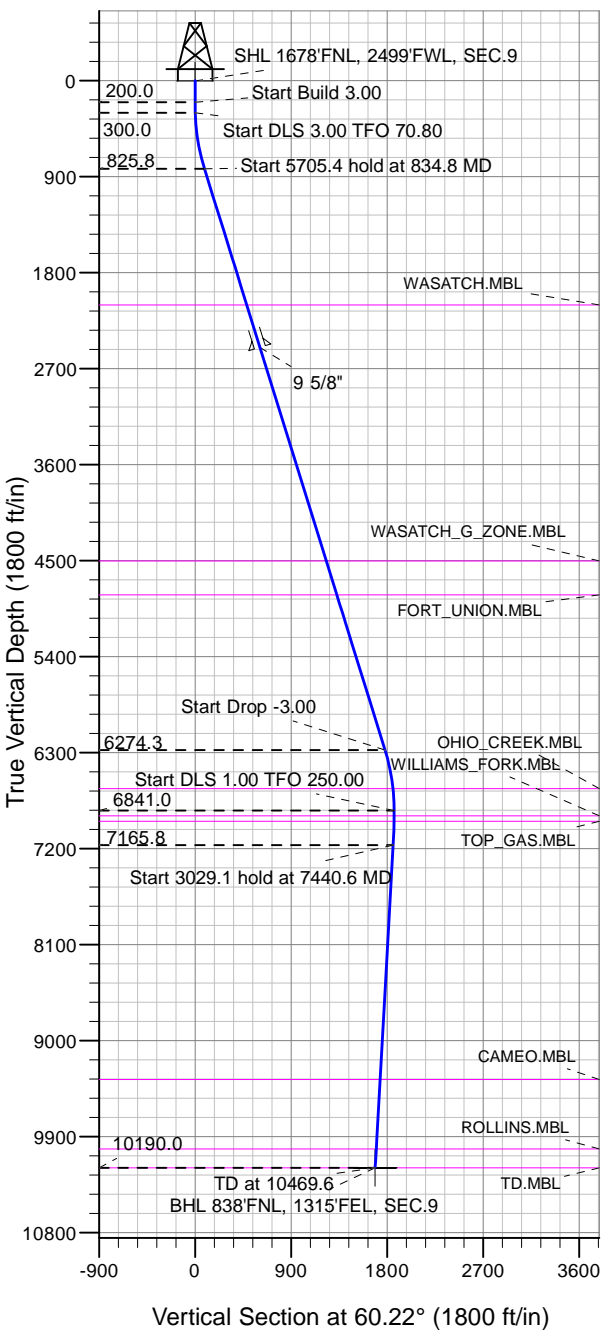


### Caerus Oil and Gas LLC



NPR 21C-9 596  
 Plan #1 (1-15-18)  
 14:06, January 18 2018

Azimuths to True North  
 Magnetic North: 9.63°

Magnetic Field  
 Strength: 51503.2snT  
 Dip Angle: 65.85°  
 Date: 1/18/2018  
 Model: HDGM

DESIGN TARGET DETAILS

Name	TVD	+N/-S	+E/-W	Latitude	Longitude	Shape
SHL 1678'FNL, 2499'FWL, SEC.9	1.0	0.0	0.0	39.632235	-108.174024	Point
BHL 838'FNL, 1315'FEL, SEC.9	10190.0	838.5	1465.2	39.634537	-108.168822	Ellipse (Radii: L200.0 W100.0)

SECTION DETAILS

Sec	MD	Inc	Azi	TVD	+N/-S	+E/-W	Dleg	TFace	Vsect	Target
1	0.0	0.00	0.00	0.0	0.0	0.0	0.00	0.00	0.0	
2	200.0	0.00	0.00	200.0	0.0	0.0	0.00	0.00	0.0	
3	300.0	3.00	0.00	300.0	2.6	0.0	3.00	0.00	1.3	
4	834.8	17.26	61.61	825.8	54.7	70.3	3.00	70.80	88.1	
5	6540.3	17.26	61.61	6274.3	859.5	1559.5	0.00	0.00	1780.5	
6	7115.6	0.00	0.00	6841.0	900.4	1635.2	3.00	180.00	1866.5	
7	7440.6	3.25	250.00	7165.8	897.2	1626.5	1.00	250.00	1857.4	
8	10469.6	3.25	250.00	10190.0	838.5	1465.2	0.00	0.00	1688.2	BHL 838'FNL, 1315'FEL, SEC.9



## **Directional**

### **Caerus Oil and Gas LLC**

**SEC.9-T5S-R96W**

**NPR G09 596 Pad Sec.9-T5S-R96W**

**NPR 21C-9 596**

**Wellbore #1**

**Plan: Plan #1 (1-15-18)**

### **Standard Planning Report**

**18 January, 2018**

<b>Database:</b>	US_EDM	<b>Local Co-ordinate Reference:</b>	Well NPR 21C-9 596
<b>Company:</b>	Caerus Oil and Gas LLC	<b>TVD Reference:</b>	WELL @ 7670.0ft (Original Well Elev)
<b>Project:</b>	SEC.9-T5S-R96W	<b>MD Reference:</b>	WELL @ 7670.0ft (Original Well Elev)
<b>Site:</b>	NPR G09 596 Pad Sec.9-T5S-R96W	<b>North Reference:</b>	True
<b>Well:</b>	NPR 21C-9 596	<b>Survey Calculation Method:</b>	Minimum Curvature
<b>Wellbore:</b>	Wellbore #1		
<b>Design:</b>	Plan #1 (1-15-18)		

<b>Project</b>	SEC.9-T5S-R96W, Garfield County, CO		
<b>Map System:</b>	Universal Transverse Mercator (US Survey Feet)	<b>System Datum:</b>	Mean Sea Level
<b>Geo Datum:</b>	NAD 1927 - Western US		Using Well Reference Point
<b>Map Zone:</b>	Zone 12N (114 W to 108 W)		Using geodetic scale factor

<b>Site</b>	NPR G09 596 Pad Sec.9-T5S-R96W				
<b>Site Position:</b>	<b>Northing:</b>	14,404,590.33 usft	<b>Latitude:</b>	39.632067	
<b>From:</b> Lat/Long	<b>Easting:</b>	2,436,015.01 usft	<b>Longitude:</b>	-108.174492	
<b>Position Uncertainty:</b>	0.0 ft	<b>Slot Radius:</b>	13-3/16 "	<b>Grid Convergence:</b>	1.80 °

<b>Well</b>	NPR 21C-9 596					
<b>Well Position</b>	<b>+N/-S</b>	61.0 ft	<b>Northing:</b>	14,404,655.51 usft	<b>Latitude:</b>	39.632235
	<b>+E/-W</b>	131.5 ft	<b>Easting:</b>	2,436,144.60 usft	<b>Longitude:</b>	-108.174025
<b>Position Uncertainty</b>		0.0 ft	<b>Wellhead Elevation:</b>	0.0 ft	<b>Ground Level:</b>	7,640.0 ft

<b>Wellbore</b>	Wellbore #1				
<b>Magnetics</b>	<b>Model Name</b>	<b>Sample Date</b>	<b>Declination (°)</b>	<b>Dip Angle (°)</b>	<b>Field Strength (nT)</b>
	HDGM	1/18/2018	9.63	65.85	51,503

<b>Design</b>	Plan #1 (1-15-18)			
<b>Audit Notes:</b>				
<b>Version:</b>	<b>Phase:</b>	PROTOTYPE	<b>Tie On Depth:</b>	0.0
<b>Vertical Section:</b>	<b>Depth From (TVD) (ft)</b>	<b>+N/-S (ft)</b>	<b>+E/-W (ft)</b>	<b>Direction (°)</b>
	0.0	0.0	0.0	60.22

<b>Plan Sections</b>										
Measured Depth (ft)	Inclination (°)	Azimuth (°)	Vertical Depth (ft)	+N/-S (ft)	+E/-W (ft)	Dogleg Rate (°/100usft)	Build Rate (°/100usft)	Turn Rate (°/100usft)	TFO (°)	Target
0.0	0.00	0.00	0.0	0.0	0.0	0.00	0.00	0.00	0.00	
200.0	0.00	0.00	200.0	0.0	0.0	0.00	0.00	0.00	0.00	
300.0	3.00	0.00	300.0	2.6	0.0	3.00	3.00	0.00	0.00	
834.8	17.26	61.61	825.8	54.7	70.3	3.00	2.67	11.52	70.80	
6,540.3	17.26	61.61	6,274.3	859.5	1,559.5	0.00	0.00	0.00	0.00	
7,115.6	0.00	0.00	6,841.0	900.4	1,635.2	3.00	-3.00	0.00	180.00	
7,440.6	3.25	250.00	7,165.8	897.2	1,626.5	1.00	1.00	-33.85	250.00	
10,469.6	3.25	250.00	10,190.0	838.5	1,465.2	0.00	0.00	0.00	0.00	BHL 838°FNL, 1315°F

<b>Database:</b>	US_EDM	<b>Local Co-ordinate Reference:</b>	Well NPR 21C-9 596
<b>Company:</b>	Caerus Oil and Gas LLC	<b>TVD Reference:</b>	WELL @ 7670.0ft (Original Well Elev)
<b>Project:</b>	SEC.9-T5S-R96W	<b>MD Reference:</b>	WELL @ 7670.0ft (Original Well Elev)
<b>Site:</b>	NPR G09 596 Pad Sec.9-T5S-R96W	<b>North Reference:</b>	True
<b>Well:</b>	NPR 21C-9 596	<b>Survey Calculation Method:</b>	Minimum Curvature
<b>Wellbore:</b>	Wellbore #1		
<b>Design:</b>	Plan #1 (1-15-18)		

Planned Survey									
Measured Depth (ft)	Inclination (°)	Azimuth (°)	Vertical Depth (ft)	+N/-S (ft)	+E/-W (ft)	Vertical Section (ft)	Dogleg Rate (°/100usft)	Build Rate (°/100usft)	Turn Rate (°/100usft)
0.0	0.00	0.00	0.0	0.0	0.0	0.0	0.00	0.00	0.00
1.0	0.00	0.00	1.0	0.0	0.0	0.0	0.00	0.00	0.00
<b>SHL 1678'FNL, 2499'FWL, SEC.9</b>									
100.0	0.00	0.00	100.0	0.0	0.0	0.0	0.00	0.00	0.00
200.0	0.00	0.00	200.0	0.0	0.0	0.0	0.00	0.00	0.00
300.0	3.00	0.00	300.0	2.6	0.0	1.3	3.00	3.00	0.00
400.0	4.89	35.44	399.7	8.7	2.5	6.5	3.00	1.89	35.44
500.0	7.54	48.81	499.1	16.5	9.9	16.8	3.00	2.65	13.38
600.0	10.38	55.10	597.9	26.0	22.2	32.2	3.00	2.84	6.29
700.0	13.29	58.68	695.8	37.1	39.4	52.6	3.00	2.91	3.58
800.0	16.23	60.99	792.5	49.9	61.5	78.1	3.00	2.94	2.31
834.8	17.26	61.61	825.8	54.7	70.3	88.1	3.00	2.96	1.79
900.0	17.26	61.61	888.1	63.9	87.3	107.5	0.00	0.00	0.00
1,000.0	17.26	61.61	983.5	78.0	113.4	137.1	0.00	0.00	0.00
1,100.0	17.26	61.61	1,079.0	92.1	139.5	166.8	0.00	0.00	0.00
1,200.0	17.26	61.61	1,174.5	106.2	165.6	196.5	0.00	0.00	0.00
1,300.0	17.26	61.61	1,270.0	120.3	191.7	226.1	0.00	0.00	0.00
1,400.0	17.26	61.61	1,365.5	134.4	217.8	255.8	0.00	0.00	0.00
1,500.0	17.26	61.61	1,461.0	148.5	243.9	285.4	0.00	0.00	0.00
1,600.0	17.26	61.61	1,556.5	162.6	270.0	315.1	0.00	0.00	0.00
1,700.0	17.26	61.61	1,652.0	176.7	296.1	344.8	0.00	0.00	0.00
1,800.0	17.26	61.61	1,747.5	190.8	322.2	374.4	0.00	0.00	0.00
1,900.0	17.26	61.61	1,843.0	204.9	348.3	404.1	0.00	0.00	0.00
2,000.0	17.26	61.61	1,938.5	219.0	374.4	433.7	0.00	0.00	0.00
2,100.0	17.26	61.61	2,034.0	233.1	400.5	463.4	0.00	0.00	0.00
2,170.1	17.26	61.61	2,101.0	243.0	418.8	484.2	0.00	0.00	0.00
<b>WASATCH.MBL</b>									
2,200.0	17.26	61.61	2,129.5	247.3	426.6	493.1	0.00	0.00	0.00
2,300.0	17.26	61.61	2,225.0	261.4	452.7	522.7	0.00	0.00	0.00
2,400.0	17.26	61.61	2,320.5	275.5	478.8	552.4	0.00	0.00	0.00
2,500.0	17.26	61.61	2,416.0	289.6	504.9	582.1	0.00	0.00	0.00
2,588.0	17.26	61.61	2,500.0	302.0	527.9	608.1	0.00	0.00	0.00
<b>9 5/8"</b>									
2,600.0	17.26	61.61	2,511.5	303.7	531.0	611.7	0.00	0.00	0.00
2,700.0	17.26	61.61	2,607.0	317.8	557.1	641.4	0.00	0.00	0.00
2,800.0	17.26	61.61	2,702.5	331.9	583.2	671.0	0.00	0.00	0.00
2,900.0	17.26	61.61	2,798.0	346.0	609.3	700.7	0.00	0.00	0.00
3,000.0	17.26	61.61	2,893.5	360.1	635.4	730.4	0.00	0.00	0.00
3,100.0	17.26	61.61	2,989.0	374.2	661.5	760.0	0.00	0.00	0.00
3,200.0	17.26	61.61	3,084.5	388.3	687.6	789.7	0.00	0.00	0.00
3,300.0	17.26	61.61	3,180.0	402.4	713.7	819.4	0.00	0.00	0.00
3,400.0	17.26	61.61	3,275.5	416.5	739.8	849.0	0.00	0.00	0.00
3,500.0	17.26	61.61	3,371.0	430.6	765.9	878.7	0.00	0.00	0.00
3,600.0	17.26	61.61	3,466.5	444.7	792.0	908.3	0.00	0.00	0.00
3,700.0	17.26	61.61	3,562.0	458.8	818.1	938.0	0.00	0.00	0.00
3,800.0	17.26	61.61	3,657.5	473.0	844.3	967.7	0.00	0.00	0.00
3,900.0	17.26	61.61	3,753.0	487.1	870.4	997.3	0.00	0.00	0.00
4,000.0	17.26	61.61	3,848.5	501.2	896.5	1,027.0	0.00	0.00	0.00
4,100.0	17.26	61.61	3,944.0	515.3	922.6	1,056.6	0.00	0.00	0.00
4,200.0	17.26	61.61	4,039.4	529.4	948.7	1,086.3	0.00	0.00	0.00
4,300.0	17.26	61.61	4,134.9	543.5	974.8	1,116.0	0.00	0.00	0.00
4,400.0	17.26	61.61	4,230.4	557.6	1,000.9	1,145.6	0.00	0.00	0.00
4,500.0	17.26	61.61	4,325.9	571.7	1,027.0	1,175.3	0.00	0.00	0.00

<b>Database:</b>	US_EDM	<b>Local Co-ordinate Reference:</b>	Well NPR 21C-9 596
<b>Company:</b>	Caerus Oil and Gas LLC	<b>TVD Reference:</b>	WELL @ 7670.0ft (Original Well Elev)
<b>Project:</b>	SEC.9-T5S-R96W	<b>MD Reference:</b>	WELL @ 7670.0ft (Original Well Elev)
<b>Site:</b>	NPR G09 596 Pad Sec.9-T5S-R96W	<b>North Reference:</b>	True
<b>Well:</b>	NPR 21C-9 596	<b>Survey Calculation Method:</b>	Minimum Curvature
<b>Wellbore:</b>	Wellbore #1		
<b>Design:</b>	Plan #1 (1-15-18)		

Planned Survey										
Measured Depth (ft)	Inclination (°)	Azimuth (°)	Vertical Depth (ft)	+N/-S (ft)	+E/-W (ft)	Vertical Section (ft)	Dogleg Rate (°/100usft)	Build Rate (°/100usft)	Turn Rate (°/100usft)	
4,600.0	17.26	61.61	4,421.4	585.8	1,053.1	1,205.0	0.00	0.00	0.00	
4,683.3	17.26	61.61	4,501.0	597.6	1,074.8	1,229.7	0.00	0.00	0.00	
<b>WASATCH_G_ZONE.MBL</b>										
4,700.0	17.26	61.61	4,516.9	599.9	1,079.2	1,234.6	0.00	0.00	0.00	
4,800.0	17.26	61.61	4,612.4	614.0	1,105.3	1,264.3	0.00	0.00	0.00	
4,900.0	17.26	61.61	4,707.9	628.1	1,131.4	1,293.9	0.00	0.00	0.00	
5,000.0	17.26	61.61	4,803.4	642.2	1,157.5	1,323.6	0.00	0.00	0.00	
5,016.3	17.26	61.61	4,819.0	644.5	1,161.7	1,328.4	0.00	0.00	0.00	
<b>FORT_UNION.MBL</b>										
5,100.0	17.26	61.61	4,898.9	656.3	1,183.6	1,353.3	0.00	0.00	0.00	
5,200.0	17.26	61.61	4,994.4	670.4	1,209.7	1,382.9	0.00	0.00	0.00	
5,300.0	17.26	61.61	5,089.9	684.6	1,235.8	1,412.6	0.00	0.00	0.00	
5,400.0	17.26	61.61	5,185.4	698.7	1,261.9	1,442.3	0.00	0.00	0.00	
5,500.0	17.26	61.61	5,280.9	712.8	1,288.0	1,471.9	0.00	0.00	0.00	
5,600.0	17.26	61.61	5,376.4	726.9	1,314.1	1,501.6	0.00	0.00	0.00	
5,700.0	17.26	61.61	5,471.9	741.0	1,340.2	1,531.2	0.00	0.00	0.00	
5,800.0	17.26	61.61	5,567.4	755.1	1,366.3	1,560.9	0.00	0.00	0.00	
5,900.0	17.26	61.61	5,662.9	769.2	1,392.4	1,590.6	0.00	0.00	0.00	
6,000.0	17.26	61.61	5,758.4	783.3	1,418.5	1,620.2	0.00	0.00	0.00	
6,100.0	17.26	61.61	5,853.9	797.4	1,444.6	1,649.9	0.00	0.00	0.00	
6,200.0	17.26	61.61	5,949.4	811.5	1,470.7	1,679.5	0.00	0.00	0.00	
6,300.0	17.26	61.61	6,044.9	825.6	1,496.8	1,709.2	0.00	0.00	0.00	
6,400.0	17.26	61.61	6,140.4	839.7	1,522.9	1,738.9	0.00	0.00	0.00	
6,500.0	17.26	61.61	6,235.9	853.8	1,549.0	1,768.5	0.00	0.00	0.00	
6,540.3	17.26	61.61	6,274.3	859.5	1,559.5	1,780.5	0.00	0.00	0.00	
6,600.0	15.47	61.61	6,331.6	867.5	1,574.3	1,797.3	3.00	-3.00	0.00	
6,700.0	12.47	61.61	6,428.7	879.0	1,595.6	1,821.4	3.00	-3.00	0.00	
6,800.0	9.47	61.61	6,526.8	888.0	1,612.3	1,840.4	3.00	-3.00	0.00	
6,900.0	6.47	61.61	6,625.9	894.6	1,624.5	1,854.3	3.00	-3.00	0.00	
6,910.2	6.16	61.61	6,636.0	895.2	1,625.5	1,855.4	3.00	-3.00	0.00	
<b>OHIO_CREEK.MBL</b>										
7,000.0	3.47	61.61	6,725.5	898.7	1,632.1	1,863.0	3.00	-3.00	0.00	
7,100.0	0.47	61.61	6,825.4	900.4	1,635.1	1,866.4	3.00	-3.00	0.00	
7,115.6	0.00	0.00	6,841.0	900.4	1,635.2	1,866.5	3.00	-3.00	0.00	
7,165.6	0.50	250.00	6,891.0	900.3	1,635.0	1,866.2	1.00	1.00	0.00	
<b>WILLIAMS_FORK.MBL</b>										
7,200.0	0.84	250.00	6,925.4	900.2	1,634.6	1,865.8	1.00	1.00	0.00	
7,215.6	1.00	250.00	6,941.0	900.1	1,634.4	1,865.6	1.00	1.00	0.00	
<b>TOP_GAS.MBL</b>										
7,300.0	1.84	250.00	7,025.4	899.4	1,632.4	1,863.5	1.00	1.00	0.00	
7,400.0	2.84	250.00	7,125.3	898.0	1,628.6	1,859.5	1.00	1.00	0.00	
7,440.6	3.25	250.00	7,165.8	897.2	1,626.5	1,857.4	1.00	1.00	0.00	
7,500.0	3.25	250.00	7,225.1	896.1	1,623.4	1,854.1	0.00	0.00	0.00	
7,600.0	3.25	250.00	7,325.0	894.2	1,618.0	1,848.5	0.00	0.00	0.00	
7,700.0	3.25	250.00	7,424.8	892.2	1,612.7	1,842.9	0.00	0.00	0.00	
7,800.0	3.25	250.00	7,524.6	890.3	1,607.4	1,837.3	0.00	0.00	0.00	
7,900.0	3.25	250.00	7,624.5	888.3	1,602.1	1,831.7	0.00	0.00	0.00	
8,000.0	3.25	250.00	7,724.3	886.4	1,596.7	1,826.1	0.00	0.00	0.00	
8,100.0	3.25	250.00	7,824.2	884.5	1,591.4	1,820.5	0.00	0.00	0.00	
8,200.0	3.25	250.00	7,924.0	882.5	1,586.1	1,815.0	0.00	0.00	0.00	
8,300.0	3.25	250.00	8,023.8	880.6	1,580.8	1,809.4	0.00	0.00	0.00	
8,400.0	3.25	250.00	8,123.7	878.6	1,575.4	1,803.8	0.00	0.00	0.00	
8,500.0	3.25	250.00	8,223.5	876.7	1,570.1	1,798.2	0.00	0.00	0.00	
8,600.0	3.25	250.00	8,323.4	874.8	1,564.8	1,792.6	0.00	0.00	0.00	

<b>Database:</b>	US_EDM	<b>Local Co-ordinate Reference:</b>	Well NPR 21C-9 596
<b>Company:</b>	Caerus Oil and Gas LLC	<b>TVD Reference:</b>	WELL @ 7670.0ft (Original Well Elev)
<b>Project:</b>	SEC.9-T5S-R96W	<b>MD Reference:</b>	WELL @ 7670.0ft (Original Well Elev)
<b>Site:</b>	NPR G09 596 Pad Sec.9-T5S-R96W	<b>North Reference:</b>	True
<b>Well:</b>	NPR 21C-9 596	<b>Survey Calculation Method:</b>	Minimum Curvature
<b>Wellbore:</b>	Wellbore #1		
<b>Design:</b>	Plan #1 (1-15-18)		

Planned Survey										
Measured Depth (ft)	Inclination (°)	Azimuth (°)	Vertical Depth (ft)	+N/-S (ft)	+E/-W (ft)	Vertical Section (ft)	Dogleg Rate (°/100usft)	Build Rate (°/100usft)	Turn Rate (°/100usft)	
8,700.0	3.25	250.00	8,423.2	872.8	1,559.5	1,787.0	0.00	0.00	0.00	
8,800.0	3.25	250.00	8,523.0	870.9	1,554.1	1,781.4	0.00	0.00	0.00	
8,900.0	3.25	250.00	8,622.9	869.0	1,548.8	1,775.9	0.00	0.00	0.00	
9,000.0	3.25	250.00	8,722.7	867.0	1,543.5	1,770.3	0.00	0.00	0.00	
9,100.0	3.25	250.00	8,822.6	865.1	1,538.1	1,764.7	0.00	0.00	0.00	
9,200.0	3.25	250.00	8,922.4	863.1	1,532.8	1,759.1	0.00	0.00	0.00	
9,300.0	3.25	250.00	9,022.2	861.2	1,527.5	1,753.5	0.00	0.00	0.00	
9,400.0	3.25	250.00	9,122.1	859.3	1,522.2	1,747.9	0.00	0.00	0.00	
9,500.0	3.25	250.00	9,221.9	857.3	1,516.8	1,742.3	0.00	0.00	0.00	
9,600.0	3.25	250.00	9,321.8	855.4	1,511.5	1,736.7	0.00	0.00	0.00	
9,641.3	3.25	250.00	9,363.0	854.6	1,509.3	1,734.4	0.00	0.00	0.00	
<b>CAMEO.MBL</b>										
9,700.0	3.25	250.00	9,421.6	853.4	1,506.2	1,731.2	0.00	0.00	0.00	
9,800.0	3.25	250.00	9,521.4	851.5	1,500.9	1,725.6	0.00	0.00	0.00	
9,900.0	3.25	250.00	9,621.3	849.6	1,495.5	1,720.0	0.00	0.00	0.00	
10,000.0	3.25	250.00	9,721.1	847.6	1,490.2	1,714.4	0.00	0.00	0.00	
10,100.0	3.25	250.00	9,821.0	845.7	1,484.9	1,708.8	0.00	0.00	0.00	
10,200.0	3.25	250.00	9,920.8	843.8	1,479.6	1,703.2	0.00	0.00	0.00	
10,294.4	3.25	250.00	10,015.0	841.9	1,474.5	1,698.0	0.00	0.00	0.00	
<b>ROLLINS.MBL</b>										
10,300.0	3.25	250.00	10,020.6	841.8	1,474.2	1,697.6	0.00	0.00	0.00	
10,400.0	3.25	250.00	10,120.5	839.9	1,468.9	1,692.1	0.00	0.00	0.00	
10,469.6	3.25	250.00	10,190.0	838.5	1,465.2	1,688.2	0.00	0.00	0.00	
<b>TD.MBL - BHL 838'FNL, 1315'FEL, SEC.9</b>										

Design Targets										
Target Name	Dip Angle (°)	Dip Dir. (°)	TVD (ft)	+N/-S (ft)	+E/-W (ft)	Northing (usft)	Easting (usft)	Latitude	Longitude	
SHL 1678'FNL, 2499'FM - hit/miss target - Shape - Point	0.00	0.00	1.0	0.0	0.0	14,404,655.51	2,436,144.60	39.632235	-108.174025	
BHL 838'FNL, 1315'FEL - plan hits target center - Ellipse (radii L200.0 W100.0 on 250.00 azi)	0.00	0.00	10,190.0	838.5	1,465.2	14,405,540.02	2,437,583.14	39.634537	-108.168823	

Casing Points						
Measured Depth (ft)	Vertical Depth (ft)	Name	Casing Diameter (")	Hole Diameter (")		
2,588.0	2,500.0	9 5/8"	9-5/8	12-1/4		

<b>Database:</b>	US_EDM	<b>Local Co-ordinate Reference:</b>	Well NPR 21C-9 596
<b>Company:</b>	Caerus Oil and Gas LLC	<b>TVD Reference:</b>	WELL @ 7670.0ft (Original Well Elev)
<b>Project:</b>	SEC.9-T5S-R96W	<b>MD Reference:</b>	WELL @ 7670.0ft (Original Well Elev)
<b>Site:</b>	NPR G09 596 Pad Sec.9-T5S-R96W	<b>North Reference:</b>	True
<b>Well:</b>	NPR 21C-9 596	<b>Survey Calculation Method:</b>	Minimum Curvature
<b>Wellbore:</b>	Wellbore #1		
<b>Design:</b>	Plan #1 (1-15-18)		

Formations						
Measured Depth (ft)	Vertical Depth (ft)	Name	Lithology	Dip (°)	Dip Direction (°)	
2,170.1	2,101.0	WASATCH.MBL		0.00		
4,683.3	4,501.0	WASATCH_G_ZONE.MBL		0.00		
5,016.3	4,819.0	FORT_UNION.MBL		0.00		
6,910.2	6,636.0	OHIO_CREEK.MBL		0.00		
7,165.6	6,891.0	WILLIAMS_FORK.MBL		0.00		
7,215.6	6,941.0	TOP_GAS.MBL		0.00		
9,641.3	9,363.0	CAMEO.MBL		0.00		
10,294.4	10,015.0	ROLLINS.MBL		0.00		
10,469.6	10,190.0	TD.MBL		0.00		