



Lat40°, Inc. 6250 W. 10th Street, Unit 2, Greeley, CO 970-515-5294

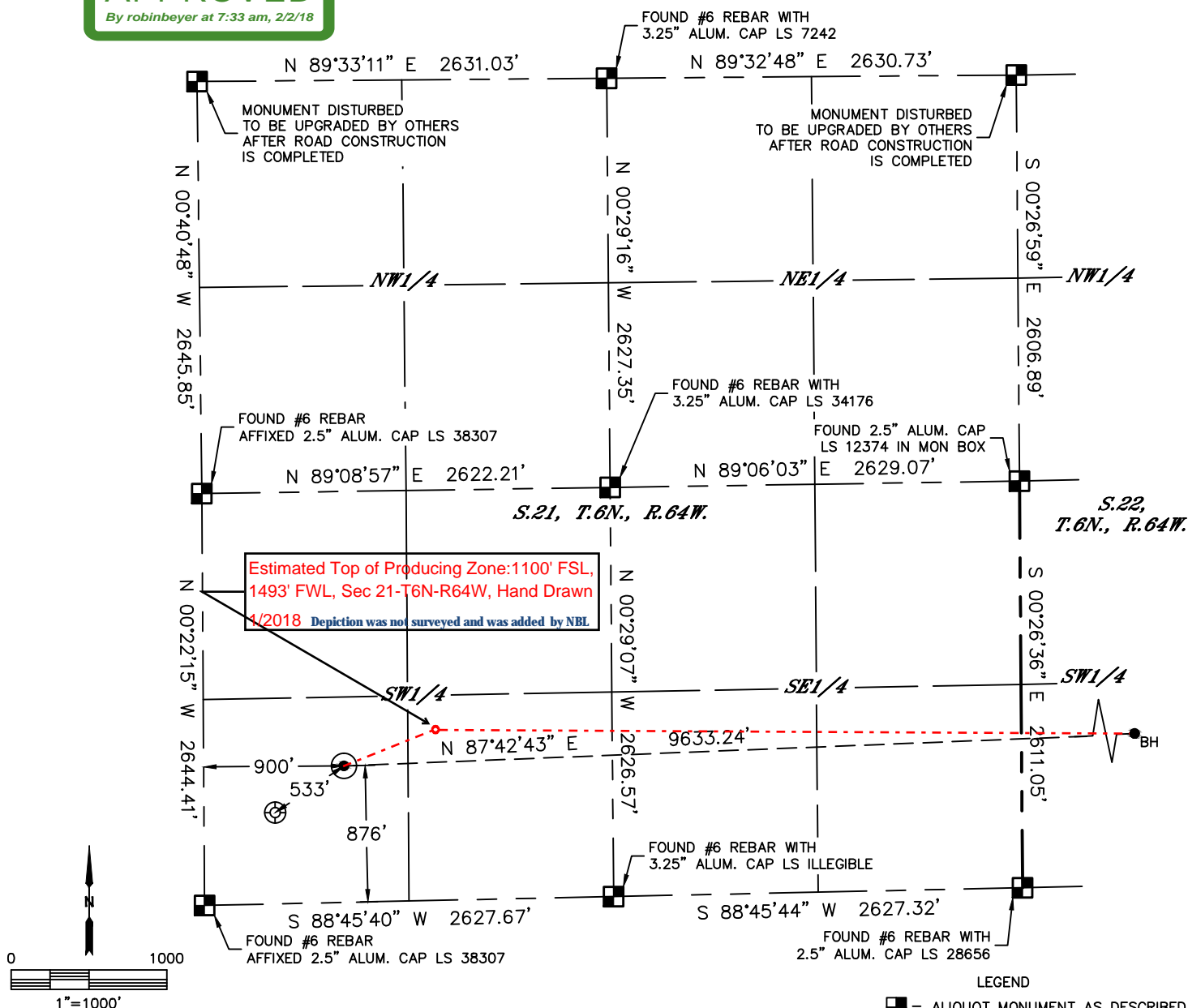
# WELL LOCATION CERTIFICATE

HARPER A21-626

SECTION: 21  
TOWNSHIP: 6N  
RANGE: 64W  
6TH. P.M.  
WELD COUNTY, CO

APPROVED

By robinbeyer at 7:33 am, 2/2/18



CLIENT: NOBLE ENERGY INC.				LANDMAN: CORY NEIGHBORS			
INSTRUMENT OPERATOR: BRIAN ROTTINGHAUS				SURVEY DATE: 11/10/2016		SURFACE USE: CROP LAND	
SHL FOOTAGE	SHL LAT°	SHL LONG°	SHL PDOP	SHL ELEV (FT.)	SHL 1/4/1/4	SHL S-T-R	
876	FSL	900	FWL	40.46666	-104.56137	3.2	4727
							SWSW
							21-6-64

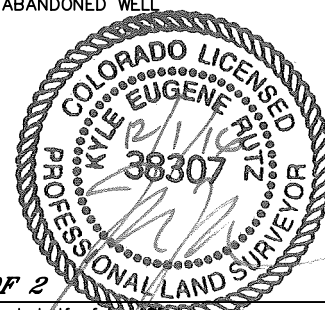
BHL FOOTAGE	BHL LAT°	BHL LONG°	BHL S-T-R
1035	FSL	1	FEL
	40.46743	-104.52677	22-6-64

NEAREST EXISTING WELL IN SHL 1/4/1/4	
EXISTING WELLS TRUST 14-21	±533' SW
NEAREST CULTURAL ITEMS	
BUILDING	±889' SE
BUILDING UNIT	±921' SE
HIGH OCCUPANCY BUILDING UNIT	±3263' SW
DESIGNATED OUTSIDE ACTIVITY AREA	5280'+
PUBLIC ROAD (COUNTY ROAD 66)	±870' S
ABOVE GROUND UTILITY	±942' SE
RAILROAD	5280'+
PROPERTY LINE	±627' SE

## NOTE:

- 1) Bearings shown are Grid Bearings of the Colorado State Plane Coordinate System, North Zone, North American Datum 1983. The lineal dimensions as contained herein are based upon the "U.S. Survey Foot."
- 2) Distances to section lines measured at 90 degrees from said section lines.
- 3) Ground elevations are based on an observed GPS elevation (NAVD 1988 DATUM).
- 4) Latitude and Longitude shown are (NAD 83 DATUM).
- 5) IMPROVEMENTS: See LOCATION DRAWING for all visible improvements within 500' of oil and gas location.
- 6) This map does not represent a boundary survey.

- LEGEND
- = ALIQUOT MONUMENT AS DESCRIBED
  - = CALCULATED POSITION
  - = SURFACE HOLE LOCATION (SHL)
  - ▲ = ENTRY POINT LOCATION (EP)
  - BH = BOTTOM HOLE LOCATION (BHL)
  - ⊕ = EXISTING WELL
  - ⊗ = ABANDONED WELL



SHEET 1 OF 2

Kyle E. Rutz—On behalf of Lat40, Inc.  
Colorado Licensed Professional Land Surveyor No. 38307  
DATE: 12/1/2016  
PROJECT#: 2016057

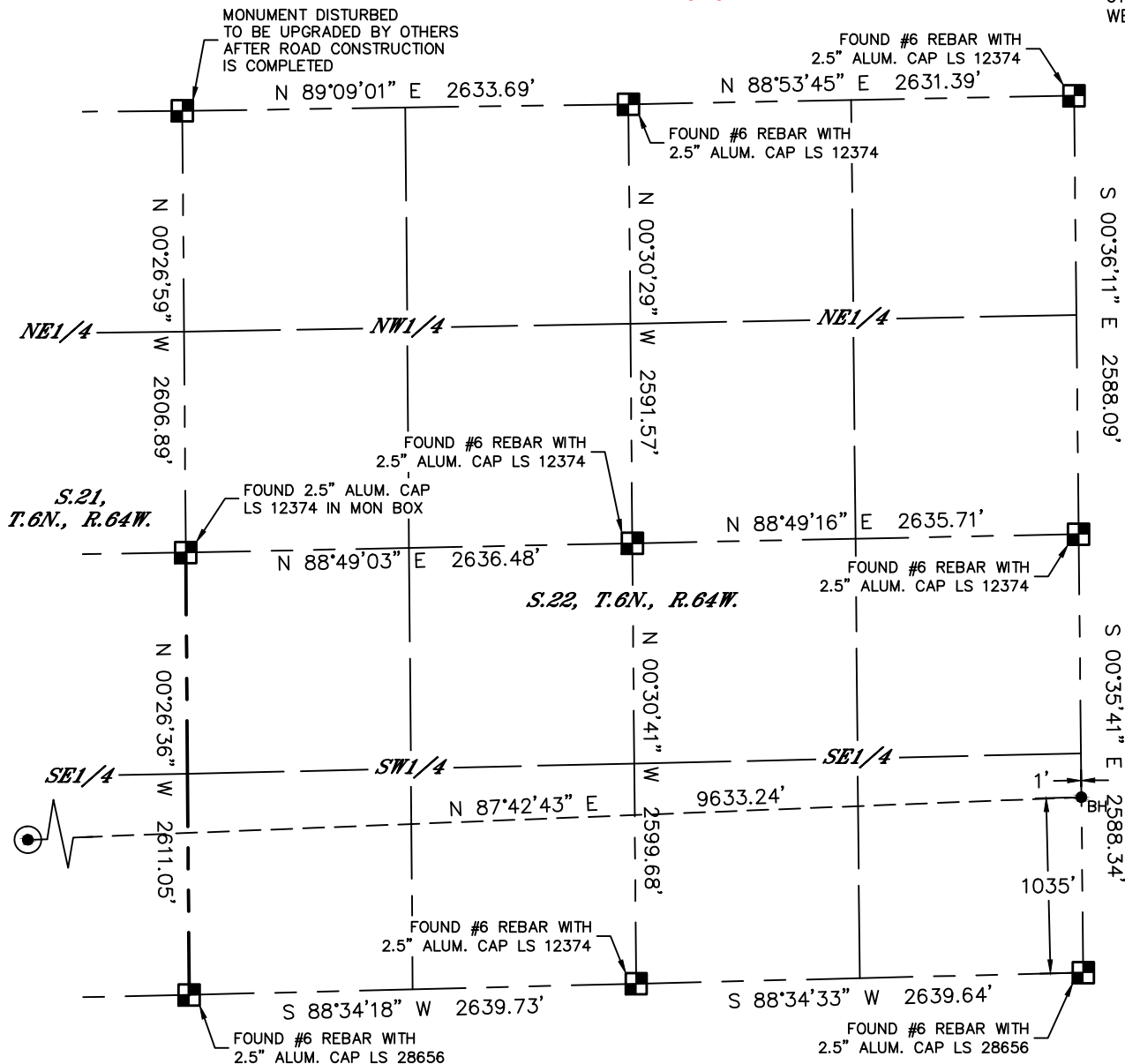


Lat40°, Inc. 6250 W. 10th Street, Unit 2, Greeley, CO 970-515-5294

# WELL LOCATION CERTIFICATE

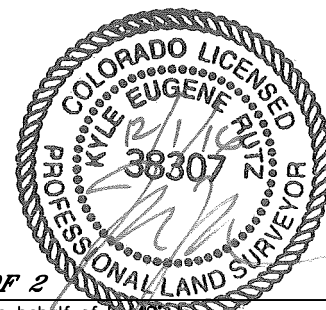
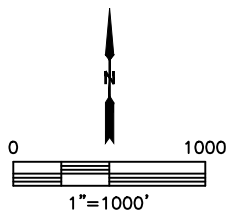
HARPER A21-626

SECTION: 21  
TOWNSHIP: 6N  
RANGE: 64W  
6TH. P.M.  
WELD COUNTY, CO



## LEGEND

- = ALIQUOT MONUMENT AS DESCRIBED
- = CALCULATED POSITION
- ⊙ = SURFACE HOLE LOCATION (SHL)
- ▲ = ENTRY POINT LOCATION (EP)
- = BOTTOM HOLE LOCATION (BHL)
- ⊕ = EXISTING WELL
- ⊖ = ABANDONED WELL



SHEET 2 OF 2

Kyle E. Rutz—On behalf of Lat40, Inc.  
Colorado Licensed Professional Land Surveyor No. 38307  
DATE: 12/1/2016  
PROJECT#: 2016057