

# T5S, R96W, 6th P.M.

## LEGEND:

- └─ = 90° SYMBOL
- = PROPOSED WELLHEAD.
- = TARGET BOTTOM HOLE.
- ▲ = SECTION CORNERS LOCATED. (NAD 83)

1917 Brass Cap,  
2.5' High  
Lat: 39.636808°  
Long: 108.183536°

1917 Brass Cap,  
2.0' High  
Lat: 39.636814°  
Long: 108.174164°

1917 Brass Cap,  
2.3' High  
Lat: 39.636808°  
Long: 108.164797°

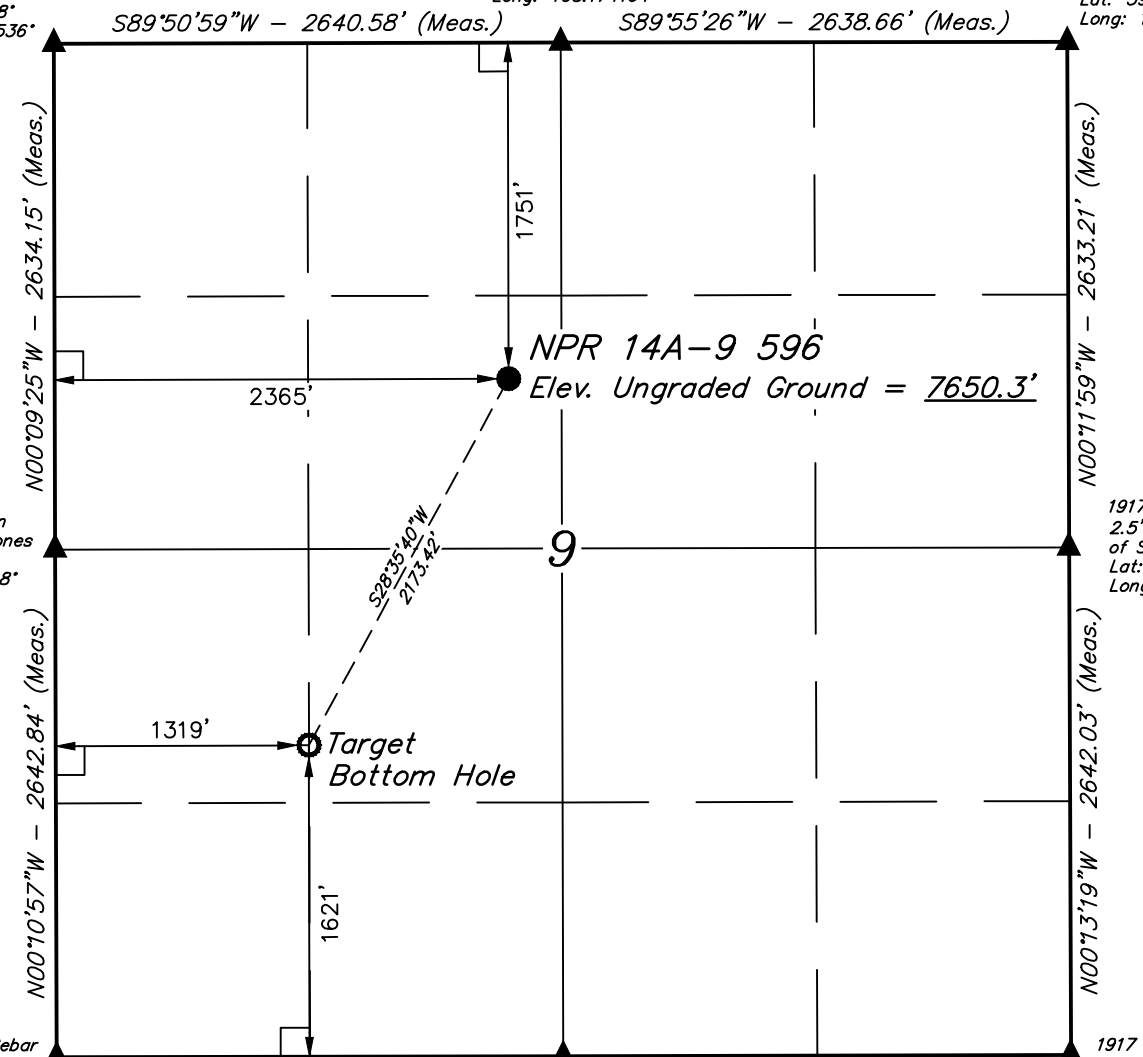
1917 Brass Cap,  
1.5' High, Wooden  
Post, Pile of Stones  
Lat: 39.629581°  
Long: 108.183528°

1917 Brass Cap,  
2.5' High, Mound  
of Stones  
Lat: 39.629583°  
Long: 108.164786°

1917 Brass Cap,  
1.7' High, 5/8" Rebar  
Lat: 39.622329°  
Long: 108.183516°

1917 Brass Cap,  
1.7' High, Pine Post  
Lat: 39.622329°  
Long: 108.174151°

1917 Brass Cap,  
2.0' High, Pine Post  
Lat: 39.622331°  
Long: 108.164769°



PDOP = 1.5



NAD 83 (SURFACE LOCATION)	NAD 83 (TARGET BOTTOM HOLE)
LATITUDE = 39°37'55.23" (39.632008)	LATITUDE = 39°37'36.40" (39.626778)
LONGITUDE = 108°10'30.49" (108.175136)	LONGITUDE = 108°10'43.83" (108.178842)
NAD 27 (SURFACE LOCATION)	NAD 27 (TARGET BOTTOM HOLE)
LATITUDE = 39°37'55.32" (39.632033)	LATITUDE = 39°37'36.49" (39.626803)
LONGITUDE = 108°10'28.20" (108.174500)	LONGITUDE = 108°10'41.54" (108.178206)
UTM NAD 27 (ZONE 12)	UTM NAD 27 (ZONE 12)
N: 14404577.94 E: 2436012.90	N: 14402640.00 E: 2435029.40

### CERTIFICATION

THIS IS TO CERTIFY THAT THE ABOVE PLAT WAS PREPARED AND LOCATION AS SHOWN WAS STAKED ON THE GROUND FROM FIELD NOTES OF ACTUAL SURVEYS MADE BY ME OR UNDER MY SUPERVISION AND THAT THE SAME ARE TRUE AND CORRECT TO THE BEST OF MY KNOWLEDGE AND BELIEF.



REGISTERED LAND SURVEYOR  
REGISTRATION NO. 38130  
STATE OF COLORADO 01-10-18

REV: 1 01-10-18 M.D. (SHL & BHL MOVE)

**BASIS OF BEARINGS**  
BASIS OF BEARINGS IS A G.P.S. OBSERVATION

**BASIS OF ELEVATION**  
BENCH MARK (H79) LOCATED IN THE NE 1/4 OF SECTION 35, T4S, R98W, 6th P.M., TAKEN FROM THE BULL FORK, QUADRANGLE, COLORADO, 7.5 MINUTE QUAD. (TOPOGRAPHIC MAP) PUBLISHED BY THE UNITED STATES DEPARTMENT OF THE INTERIOR, GEOLOGICAL SURVEY. SAID ELEVATION IS MARKED AS BEING 8535 FEET.



**UELS, LLC**  
Corporate Office \* 85 South 200 East  
Vernal, UT 84078 \* (435) 789-1017



## Caerus Oil & Gas LLC

**NPR 14A-9 596**  
**SE 1/4 NW 1/4, SECTION 9, T5S, R96W, 6th P.M.**  
**GARFIELD COUNTY, COLORADO**

SURVEYED BY	BART HUNTING, J.F.	12-18-17	SCALE
DRAWN BY	M.D.	12-20-17	1" = 1000'

## WELL LOCATION PLAT