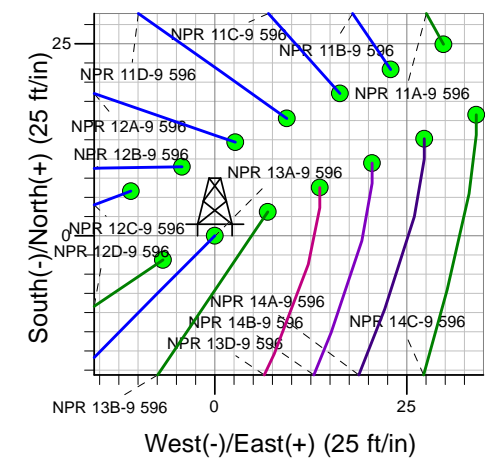
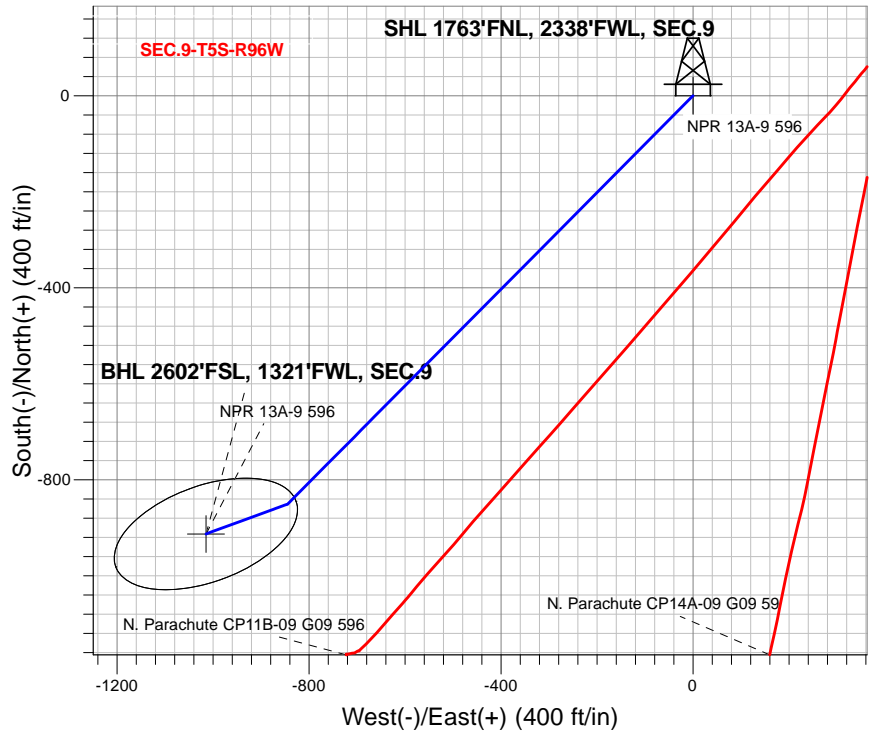
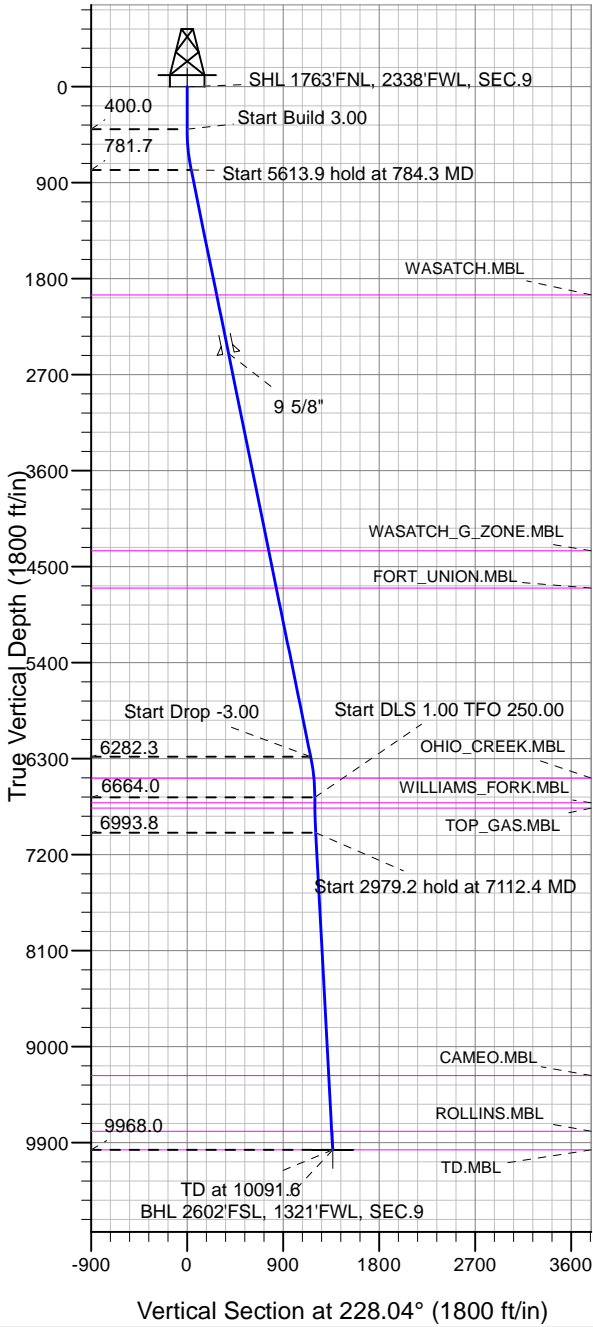


### Caerus Oil and Gas LLC



NPR 13A-9 596  
 Plan #1 (1-15-18)  
 9:39, January 18 2018

Azimuths to True North  
 Magnetic North: 9.63°

Magnetic Field  
 Strength: 51503.2snT  
 Dip Angle: 65.85°  
 Date: 1/18/2018  
 Model: HDGM

#### DESIGN TARGET DETAILS

Name	TVD	+N/-S	+E/-W	Latitude	Longitude	Shape
SHL 1763'FNL, 2338'FWL, SEC.9	1.0	0.0	0.0	39.631999	-108.174597	Point
BHL 2602'FSL, 1321'FWL, SEC.9	9968.0	-912.7	-1014.9	39.629493	-108.178200	Ellipse (Radii: L200.0 W100.0)

#### SECTION DETAILS

Sec	MD	Inc	Azi	TVD	+N/-S	+E/-W	Dleg	TFace	VSect	Target
1	0.0	0.00	0.00	0.0	0.0	0.0	0.00	0.00	0.0	
2	400.0	0.00	0.00	400.0	0.0	0.0	0.00	0.00	0.0	
3	784.3	11.53	224.80	781.7	-27.3	-27.2	3.00	224.80	38.5	
4	6398.1	11.53	224.80	6282.3	-823.5	-817.7	0.00	0.00	1158.7	
5	6782.4	0.00	0.00	6664.0	-850.8	-844.9	3.00	180.00	1197.1	
6	7112.4	3.30	250.00	6993.8	-854.0	-853.8	1.00	250.00	1205.9	
7	10091.6	3.30	250.00	9968.0	-912.7	-1014.9	0.00	0.00	1365.0	BHL 2602'FSL, 1321'FWL, SEC.9



## Directional

### **Caerus Oil and Gas LLC**

**SEC.9-T5S-R96W**

**NPR G09 596 Pad Sec.9-T5S-R96W**

**NPR 13A-9 596**

**Wellbore #1**

**Plan: Plan #1 (1-15-18)**

### **Standard Planning Report**

**18 January, 2018**

<b>Database:</b>	US_EDM	<b>Local Co-ordinate Reference:</b>	Well NPR 13A-9 596
<b>Company:</b>	Caerus Oil and Gas LLC	<b>TVD Reference:</b>	WELL @ 7670.0ft (Original Well Elev)
<b>Project:</b>	SEC.9-T5S-R96W	<b>MD Reference:</b>	WELL @ 7670.0ft (Original Well Elev)
<b>Site:</b>	NPR G09 596 Pad Sec.9-T5S-R96W	<b>North Reference:</b>	True
<b>Well:</b>	NPR 13A-9 596	<b>Survey Calculation Method:</b>	Minimum Curvature
<b>Wellbore:</b>	Wellbore #1		
<b>Design:</b>	Plan #1 (1-15-18)		

<b>Project</b>	SEC.9-T5S-R96W, Garfield County, CO		
<b>Map System:</b>	Universal Transverse Mercator (US Survey Feet)	<b>System Datum:</b>	Mean Sea Level
<b>Geo Datum:</b>	NAD 1927 - Western US		Using Well Reference Point
<b>Map Zone:</b>	Zone 12N (114 W to 108 W)		Using geodetic scale factor

<b>Site</b>	NPR G09 596 Pad Sec.9-T5S-R96W				
<b>Site Position:</b>	<b>Northing:</b>	14,404,590.33 usft	<b>Latitude:</b>	39.632067	
<b>From:</b> Lat/Long	<b>Easting:</b>	2,436,015.01 usft	<b>Longitude:</b>	-108.174492	
<b>Position Uncertainty:</b>	0.0 ft	<b>Slot Radius:</b>	13-3/16 "	<b>Grid Convergence:</b>	1.80 °

<b>Well</b>	NPR 13A-9 596					
<b>Well Position</b>	<b>+N/-S</b>	-24.9 ft	<b>Northing:</b>	14,404,564.49 usft	<b>Latitude:</b>	39.631999
	<b>+E/-W</b>	-29.8 ft	<b>Easting:</b>	2,435,986.03 usft	<b>Longitude:</b>	-108.174597
<b>Position Uncertainty</b>		0.0 ft	<b>Wellhead Elevation:</b>	0.0 ft	<b>Ground Level:</b>	7,640.0 ft

<b>Wellbore</b>	Wellbore #1				
<b>Magnetics</b>	<b>Model Name</b>	<b>Sample Date</b>	<b>Declination (°)</b>	<b>Dip Angle (°)</b>	<b>Field Strength (nT)</b>
	HDGM	1/18/2018	9.63	65.85	51,503

<b>Design</b>	Plan #1 (1-15-18)			
<b>Audit Notes:</b>				
<b>Version:</b>	<b>Phase:</b>	PROTOTYPE	<b>Tie On Depth:</b>	0.0
<b>Vertical Section:</b>	<b>Depth From (TVD) (ft)</b>	<b>+N/-S (ft)</b>	<b>+E/-W (ft)</b>	<b>Direction (°)</b>
	0.0	0.0	0.0	228.04

<b>Plan Sections</b>										
Measured Depth (ft)	Inclination (°)	Azimuth (°)	Vertical Depth (ft)	+N/-S (ft)	+E/-W (ft)	Dogleg Rate (°/100usft)	Build Rate (°/100usft)	Turn Rate (°/100usft)	TFO (°)	Target
0.0	0.00	0.00	0.0	0.0	0.0	0.00	0.00	0.00	0.00	
400.0	0.00	0.00	400.0	0.0	0.0	0.00	0.00	0.00	0.00	
784.3	11.53	224.80	781.7	-27.3	-27.2	3.00	3.00	0.00	224.80	
6,398.1	11.53	224.80	6,282.3	-823.5	-817.7	0.00	0.00	0.00	0.00	
6,782.4	0.00	0.00	6,664.0	-850.8	-844.9	3.00	-3.00	0.00	180.00	
7,112.4	3.30	250.00	6,993.8	-854.0	-853.8	1.00	1.00	-33.34	250.00	
10,091.6	3.30	250.00	9,968.0	-912.7	-1,014.9	0.00	0.00	0.00	0.00	0.00 BHL 2602'FSL, 1321'I

<b>Database:</b>	US_EDM	<b>Local Co-ordinate Reference:</b>	Well NPR 13A-9 596
<b>Company:</b>	Caerus Oil and Gas LLC	<b>TVD Reference:</b>	WELL @ 7670.0ft (Original Well Elev)
<b>Project:</b>	SEC.9-T5S-R96W	<b>MD Reference:</b>	WELL @ 7670.0ft (Original Well Elev)
<b>Site:</b>	NPR G09 596 Pad Sec.9-T5S-R96W	<b>North Reference:</b>	True
<b>Well:</b>	NPR 13A-9 596	<b>Survey Calculation Method:</b>	Minimum Curvature
<b>Wellbore:</b>	Wellbore #1		
<b>Design:</b>	Plan #1 (1-15-18)		

Planned Survey										
Measured Depth (ft)	Inclination (°)	Azimuth (°)	Vertical Depth (ft)	+N/-S (ft)	+E/-W (ft)	Vertical Section (ft)	Dogleg Rate (°/100usft)	Build Rate (°/100usft)	Turn Rate (°/100usft)	
0.0	0.00	0.00	0.0	0.0	0.0	0.0	0.00	0.00	0.00	
1.0	0.00	0.00	1.0	0.0	0.0	0.0	0.00	0.00	0.00	
<b>SHL 1763'FNL, 2338'FWL, SEC.9</b>										
100.0	0.00	0.00	100.0	0.0	0.0	0.0	0.00	0.00	0.00	
200.0	0.00	0.00	200.0	0.0	0.0	0.0	0.00	0.00	0.00	
300.0	0.00	0.00	300.0	0.0	0.0	0.0	0.00	0.00	0.00	
400.0	0.00	0.00	400.0	0.0	0.0	0.0	0.00	0.00	0.00	
500.0	3.00	224.80	500.0	-1.9	-1.8	2.6	3.00	3.00	0.00	
600.0	6.00	224.80	599.6	-7.4	-7.4	10.4	3.00	3.00	0.00	
700.0	9.00	224.80	698.8	-16.7	-16.6	23.5	3.00	3.00	0.00	
784.3	11.53	224.80	781.7	-27.3	-27.2	38.5	3.00	3.00	0.00	
800.0	11.53	224.80	797.1	-29.6	-29.4	41.6	0.00	0.00	0.00	
900.0	11.53	224.80	895.1	-43.7	-43.4	61.6	0.00	0.00	0.00	
1,000.0	11.53	224.80	993.1	-57.9	-57.5	81.5	0.00	0.00	0.00	
1,100.0	11.53	224.80	1,091.0	-72.1	-71.6	101.5	0.00	0.00	0.00	
1,200.0	11.53	224.80	1,189.0	-86.3	-85.7	121.4	0.00	0.00	0.00	
1,300.0	11.53	224.80	1,287.0	-100.5	-99.8	141.4	0.00	0.00	0.00	
1,400.0	11.53	224.80	1,385.0	-114.7	-113.9	161.3	0.00	0.00	0.00	
1,500.0	11.53	224.80	1,483.0	-128.8	-127.9	181.3	0.00	0.00	0.00	
1,600.0	11.53	224.80	1,581.0	-143.0	-142.0	201.2	0.00	0.00	0.00	
1,700.0	11.53	224.80	1,678.9	-157.2	-156.1	221.2	0.00	0.00	0.00	
1,800.0	11.53	224.80	1,776.9	-171.4	-170.2	241.1	0.00	0.00	0.00	
1,900.0	11.53	224.80	1,874.9	-185.6	-184.3	261.1	0.00	0.00	0.00	
1,978.7	11.53	224.80	1,952.0	-196.7	-195.4	276.8	0.00	0.00	0.00	
<b>WASATCH.MBL</b>										
2,000.0	11.53	224.80	1,972.9	-199.7	-198.4	281.1	0.00	0.00	0.00	
2,100.0	11.53	224.80	2,070.9	-213.9	-212.4	301.0	0.00	0.00	0.00	
2,200.0	11.53	224.80	2,168.8	-228.1	-226.5	321.0	0.00	0.00	0.00	
2,300.0	11.53	224.80	2,266.8	-242.3	-240.6	340.9	0.00	0.00	0.00	
2,400.0	11.53	224.80	2,364.8	-256.5	-254.7	360.9	0.00	0.00	0.00	
2,500.0	11.53	224.80	2,462.8	-270.7	-268.8	380.8	0.00	0.00	0.00	
2,538.0	11.53	224.80	2,500.0	-276.0	-274.1	388.4	0.00	0.00	0.00	
<b>9 5/8"</b>										
2,600.0	11.53	224.80	2,560.8	-284.8	-282.9	400.8	0.00	0.00	0.00	
2,700.0	11.53	224.80	2,658.8	-299.0	-296.9	420.7	0.00	0.00	0.00	
2,800.0	11.53	224.80	2,756.7	-313.2	-311.0	440.7	0.00	0.00	0.00	
2,900.0	11.53	224.80	2,854.7	-327.4	-325.1	460.6	0.00	0.00	0.00	
3,000.0	11.53	224.80	2,952.7	-341.6	-339.2	480.6	0.00	0.00	0.00	
3,100.0	11.53	224.80	3,050.7	-355.7	-353.3	500.5	0.00	0.00	0.00	
3,200.0	11.53	224.80	3,148.7	-369.9	-367.4	520.5	0.00	0.00	0.00	
3,300.0	11.53	224.80	3,246.7	-384.1	-381.4	540.5	0.00	0.00	0.00	
3,400.0	11.53	224.80	3,344.6	-398.3	-395.5	560.4	0.00	0.00	0.00	
3,500.0	11.53	224.80	3,442.6	-412.5	-409.6	580.4	0.00	0.00	0.00	
3,600.0	11.53	224.80	3,540.6	-426.6	-423.7	600.3	0.00	0.00	0.00	
3,700.0	11.53	224.80	3,638.6	-440.8	-437.8	620.3	0.00	0.00	0.00	
3,800.0	11.53	224.80	3,736.6	-455.0	-451.9	640.2	0.00	0.00	0.00	
3,900.0	11.53	224.80	3,834.6	-469.2	-465.9	660.2	0.00	0.00	0.00	
4,000.0	11.53	224.80	3,932.5	-483.4	-480.0	680.1	0.00	0.00	0.00	
4,100.0	11.53	224.80	4,030.5	-497.6	-494.1	700.1	0.00	0.00	0.00	
4,200.0	11.53	224.80	4,128.5	-511.7	-508.2	720.0	0.00	0.00	0.00	
4,300.0	11.53	224.80	4,226.5	-525.9	-522.3	740.0	0.00	0.00	0.00	
4,400.0	11.53	224.80	4,324.5	-540.1	-536.4	760.0	0.00	0.00	0.00	
4,428.1	11.53	224.80	4,352.0	-544.1	-540.3	765.6	0.00	0.00	0.00	
<b>WASATCH_G_ZONE.MBL</b>										

<b>Database:</b>	US_EDM	<b>Local Co-ordinate Reference:</b>	Well NPR 13A-9 596
<b>Company:</b>	Caerus Oil and Gas LLC	<b>TVD Reference:</b>	WELL @ 7670.0ft (Original Well Elev)
<b>Project:</b>	SEC.9-T5S-R96W	<b>MD Reference:</b>	WELL @ 7670.0ft (Original Well Elev)
<b>Site:</b>	NPR G09 596 Pad Sec.9-T5S-R96W	<b>North Reference:</b>	True
<b>Well:</b>	NPR 13A-9 596	<b>Survey Calculation Method:</b>	Minimum Curvature
<b>Wellbore:</b>	Wellbore #1		
<b>Design:</b>	Plan #1 (1-15-18)		

Planned Survey									
Measured Depth (ft)	Inclination (°)	Azimuth (°)	Vertical Depth (ft)	+N/-S (ft)	+E/-W (ft)	Vertical Section (ft)	Dogleg Rate (°/100usft)	Build Rate (°/100usft)	Turn Rate (°/100usft)
4,500.0	11.53	224.80	4,422.4	-554.3	-550.4	779.9	0.00	0.00	0.00
4,600.0	11.53	224.80	4,520.4	-568.5	-564.5	799.9	0.00	0.00	0.00
4,700.0	11.53	224.80	4,618.4	-582.6	-578.6	819.8	0.00	0.00	0.00
4,785.3	11.53	224.80	4,702.0	-594.7	-590.6	836.8	0.00	0.00	0.00
<b>FORT_UNION.MBL</b>									
4,800.0	11.53	224.80	4,716.4	-596.8	-592.7	839.8	0.00	0.00	0.00
4,900.0	11.53	224.80	4,814.4	-611.0	-606.8	859.7	0.00	0.00	0.00
5,000.0	11.53	224.80	4,912.4	-625.2	-620.8	879.7	0.00	0.00	0.00
5,100.0	11.53	224.80	5,010.3	-639.4	-634.9	899.6	0.00	0.00	0.00
5,200.0	11.53	224.80	5,108.3	-653.5	-649.0	919.6	0.00	0.00	0.00
5,300.0	11.53	224.80	5,206.3	-667.7	-663.1	939.5	0.00	0.00	0.00
5,400.0	11.53	224.80	5,304.3	-681.9	-677.2	959.5	0.00	0.00	0.00
5,500.0	11.53	224.80	5,402.3	-696.1	-691.3	979.4	0.00	0.00	0.00
5,600.0	11.53	224.80	5,500.3	-710.3	-705.3	999.4	0.00	0.00	0.00
5,700.0	11.53	224.80	5,598.2	-724.5	-719.4	1,019.4	0.00	0.00	0.00
5,800.0	11.53	224.80	5,696.2	-738.6	-733.5	1,039.3	0.00	0.00	0.00
5,900.0	11.53	224.80	5,794.2	-752.8	-747.6	1,059.3	0.00	0.00	0.00
6,000.0	11.53	224.80	5,892.2	-767.0	-761.7	1,079.2	0.00	0.00	0.00
6,100.0	11.53	224.80	5,990.2	-781.2	-775.8	1,099.2	0.00	0.00	0.00
6,200.0	11.53	224.80	6,088.1	-795.4	-789.8	1,119.1	0.00	0.00	0.00
6,300.0	11.53	224.80	6,186.1	-809.5	-803.9	1,139.1	0.00	0.00	0.00
6,398.1	11.53	224.80	6,282.3	-823.5	-817.7	1,158.7	0.00	0.00	0.00
6,400.0	11.47	224.80	6,284.1	-823.7	-818.0	1,159.0	3.00	-3.00	0.00
6,500.0	8.47	224.80	6,382.6	-836.0	-830.2	1,176.3	3.00	-3.00	0.00
6,600.0	5.47	224.80	6,481.8	-844.6	-838.8	1,188.4	3.00	-3.00	0.00
6,601.2	5.44	224.80	6,483.0	-844.7	-838.8	1,188.6	3.00	-3.00	0.00
<b>OHIO_CREEK.MBL</b>									
6,700.0	2.47	224.80	6,581.6	-849.5	-843.6	1,195.4	3.00	-3.00	0.00
6,782.4	0.00	0.00	6,664.0	-850.8	-844.9	1,197.1	3.00	-3.00	0.00
6,800.0	0.18	250.00	6,681.6	-850.8	-844.9	1,197.2	1.00	1.00	0.00
6,832.4	0.50	250.00	6,714.0	-850.9	-845.1	1,197.3	1.00	1.00	0.00
<b>WILLIAMS_FORK.MBL</b>									
6,882.4	1.00	250.00	6,764.0	-851.1	-845.7	1,197.9	1.00	1.00	0.00
<b>TOP_GAS.MBL</b>									
6,900.0	1.18	250.00	6,781.6	-851.2	-846.0	1,198.3	1.00	1.00	0.00
7,000.0	2.18	250.00	6,881.5	-852.2	-848.8	1,201.0	1.00	1.00	0.00
7,100.0	3.18	250.00	6,981.4	-853.8	-853.2	1,205.3	1.00	1.00	0.00
7,112.4	3.30	250.00	6,993.8	-854.0	-853.8	1,205.9	1.00	1.00	0.00
7,200.0	3.30	250.00	7,081.2	-855.8	-858.6	1,210.6	0.00	0.00	0.00
7,300.0	3.30	250.00	7,181.1	-857.7	-864.0	1,216.0	0.00	0.00	0.00
7,400.0	3.30	250.00	7,280.9	-859.7	-869.4	1,221.3	0.00	0.00	0.00
7,500.0	3.30	250.00	7,380.7	-861.7	-874.8	1,226.6	0.00	0.00	0.00
7,600.0	3.30	250.00	7,480.6	-863.6	-880.2	1,232.0	0.00	0.00	0.00
7,700.0	3.30	250.00	7,580.4	-865.6	-885.6	1,237.3	0.00	0.00	0.00
7,800.0	3.30	250.00	7,680.2	-867.6	-891.0	1,242.6	0.00	0.00	0.00
7,900.0	3.30	250.00	7,780.1	-869.6	-896.4	1,248.0	0.00	0.00	0.00
8,000.0	3.30	250.00	7,879.9	-871.5	-901.8	1,253.3	0.00	0.00	0.00
8,100.0	3.30	250.00	7,979.7	-873.5	-907.2	1,258.7	0.00	0.00	0.00
8,200.0	3.30	250.00	8,079.6	-875.5	-912.6	1,264.0	0.00	0.00	0.00
8,300.0	3.30	250.00	8,179.4	-877.4	-918.1	1,269.3	0.00	0.00	0.00
8,400.0	3.30	250.00	8,279.2	-879.4	-923.5	1,274.7	0.00	0.00	0.00
8,500.0	3.30	250.00	8,379.1	-881.4	-928.9	1,280.0	0.00	0.00	0.00
8,600.0	3.30	250.00	8,478.9	-883.3	-934.3	1,285.3	0.00	0.00	0.00

<b>Database:</b>	US_EDM	<b>Local Co-ordinate Reference:</b>	Well NPR 13A-9 596
<b>Company:</b>	Caerus Oil and Gas LLC	<b>TVD Reference:</b>	WELL @ 7670.0ft (Original Well Elev)
<b>Project:</b>	SEC.9-T5S-R96W	<b>MD Reference:</b>	WELL @ 7670.0ft (Original Well Elev)
<b>Site:</b>	NPR G09 596 Pad Sec.9-T5S-R96W	<b>North Reference:</b>	True
<b>Well:</b>	NPR 13A-9 596	<b>Survey Calculation Method:</b>	Minimum Curvature
<b>Wellbore:</b>	Wellbore #1		
<b>Design:</b>	Plan #1 (1-15-18)		

Planned Survey										
Measured Depth (ft)	Inclination (°)	Azimuth (°)	Vertical Depth (ft)	+N/-S (ft)	+E/-W (ft)	Vertical Section (ft)	Dogleg Rate (°/100usft)	Build Rate (°/100usft)	Turn Rate (°/100usft)	
8,700.0	3.30	250.00	8,578.7	-885.3	-939.7	1,290.7	0.00	0.00	0.00	
8,800.0	3.30	250.00	8,678.6	-887.3	-945.1	1,296.0	0.00	0.00	0.00	
8,900.0	3.30	250.00	8,778.4	-889.2	-950.5	1,301.4	0.00	0.00	0.00	
9,000.0	3.30	250.00	8,878.3	-891.2	-955.9	1,306.7	0.00	0.00	0.00	
9,100.0	3.30	250.00	8,978.1	-893.2	-961.3	1,312.0	0.00	0.00	0.00	
9,200.0	3.30	250.00	9,077.9	-895.1	-966.7	1,317.4	0.00	0.00	0.00	
9,300.0	3.30	250.00	9,177.8	-897.1	-972.1	1,322.7	0.00	0.00	0.00	
9,393.4	3.30	250.00	9,271.0	-899.0	-977.2	1,327.7	0.00	0.00	0.00	
<b>CAMEO.MBL</b>										
9,400.0	3.30	250.00	9,277.6	-899.1	-977.5	1,328.1	0.00	0.00	0.00	
9,500.0	3.30	250.00	9,377.4	-901.0	-983.0	1,333.4	0.00	0.00	0.00	
9,600.0	3.30	250.00	9,477.3	-903.0	-988.4	1,338.7	0.00	0.00	0.00	
9,700.0	3.30	250.00	9,577.1	-905.0	-993.8	1,344.1	0.00	0.00	0.00	
9,800.0	3.30	250.00	9,676.9	-907.0	-999.2	1,349.4	0.00	0.00	0.00	
9,900.0	3.30	250.00	9,776.8	-908.9	-1,004.6	1,354.7	0.00	0.00	0.00	
9,916.3	3.30	250.00	9,793.0	-909.2	-1,005.5	1,355.6	0.00	0.00	0.00	
<b>ROLLINS.MBL</b>										
10,000.0	3.30	250.00	9,876.6	-910.9	-1,010.0	1,360.1	0.00	0.00	0.00	
10,091.6	3.30	250.00	9,968.0	-912.7	-1,014.9	1,365.0	0.00	0.00	0.00	
<b>TD.MBL - BHL 2602'FSL, 1321'FWL, SEC.9</b>										

Design Targets										
Target Name	Dip Angle (°)	Dip Dir. (°)	TVD (ft)	+N/-S (ft)	+E/-W (ft)	Northing (usft)	Easting (usft)	Latitude	Longitude	
SHL 1763'FNL, 2338'FW - hit/miss target - Shape - Point	0.00	0.00	1.0	0.0	0.0	14,404,564.49	2,435,986.03	39.631999	-108.174597	
BHL 2602'FSL, 1321'FW - plan hits target center - Ellipse (radii L200.0 W100.0 on 250.00 azi)	0.00	0.00	9,968.0	-912.7	-1,014.9	14,403,620.00	2,434,999.98	39.629493	-108.178201	

Casing Points						
Measured Depth (ft)	Vertical Depth (ft)	Name	Casing Diameter (")	Hole Diameter (")		
2,538.0	2,500.0	9 5/8"	9-5/8	12-1/4		

<b>Database:</b>	US_EDM	<b>Local Co-ordinate Reference:</b>	Well NPR 13A-9 596
<b>Company:</b>	Caerus Oil and Gas LLC	<b>TVD Reference:</b>	WELL @ 7670.0ft (Original Well Elev)
<b>Project:</b>	SEC.9-T5S-R96W	<b>MD Reference:</b>	WELL @ 7670.0ft (Original Well Elev)
<b>Site:</b>	NPR G09 596 Pad Sec.9-T5S-R96W	<b>North Reference:</b>	True
<b>Well:</b>	NPR 13A-9 596	<b>Survey Calculation Method:</b>	Minimum Curvature
<b>Wellbore:</b>	Wellbore #1		
<b>Design:</b>	Plan #1 (1-15-18)		

Formations						
Measured Depth (ft)	Vertical Depth (ft)	Name	Lithology	Dip (°)	Dip Direction (°)	
1,978.7	1,952.0	WASATCH.MBL		0.00		
4,428.1	4,352.0	WASATCH_G_ZONE.MBL		0.00		
4,785.3	4,702.0	FORT_UNION.MBL		0.00		
6,601.2	6,483.0	OHIO_CREEK.MBL		0.00		
6,832.4	6,714.0	WILLIAMS_FORK.MBL		0.00		
6,882.4	6,764.0	TOP_GAS.MBL		0.00		
9,393.4	9,271.0	CAMEO.MBL		0.00		
9,916.3	9,793.0	ROLLINS.MBL		0.00		
10,091.6	9,968.0	TD.MBL		0.00		