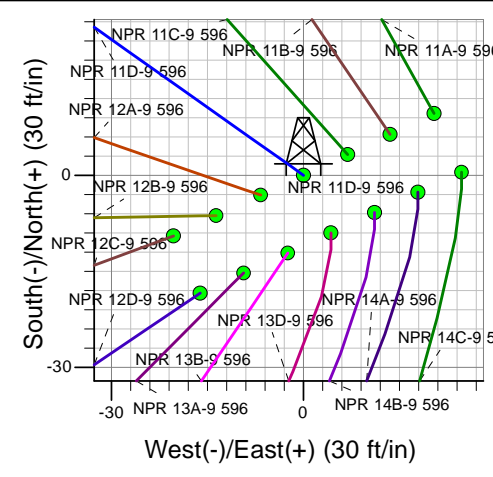
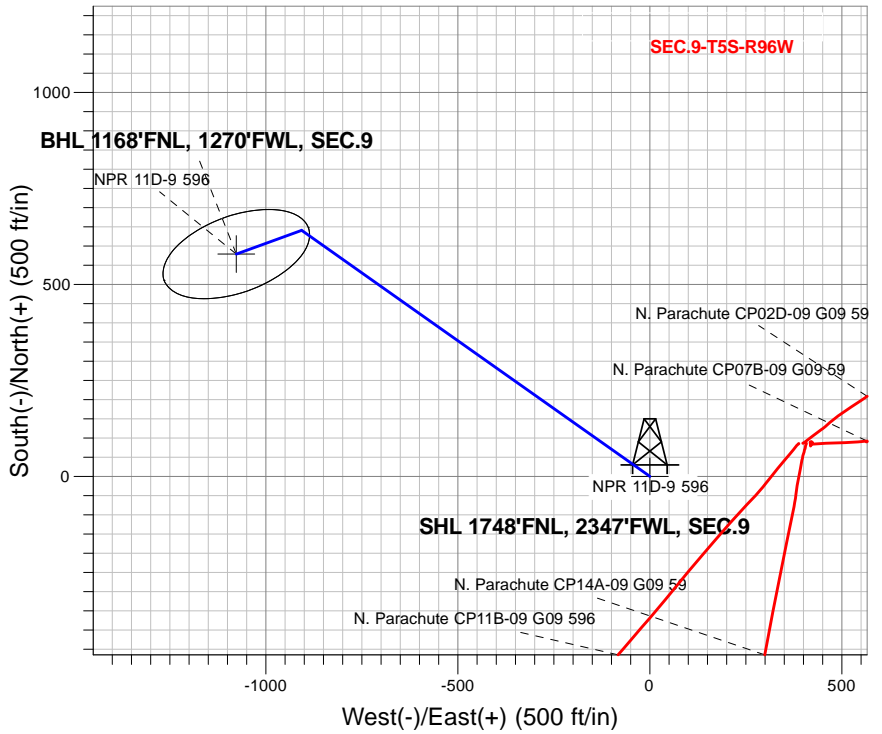
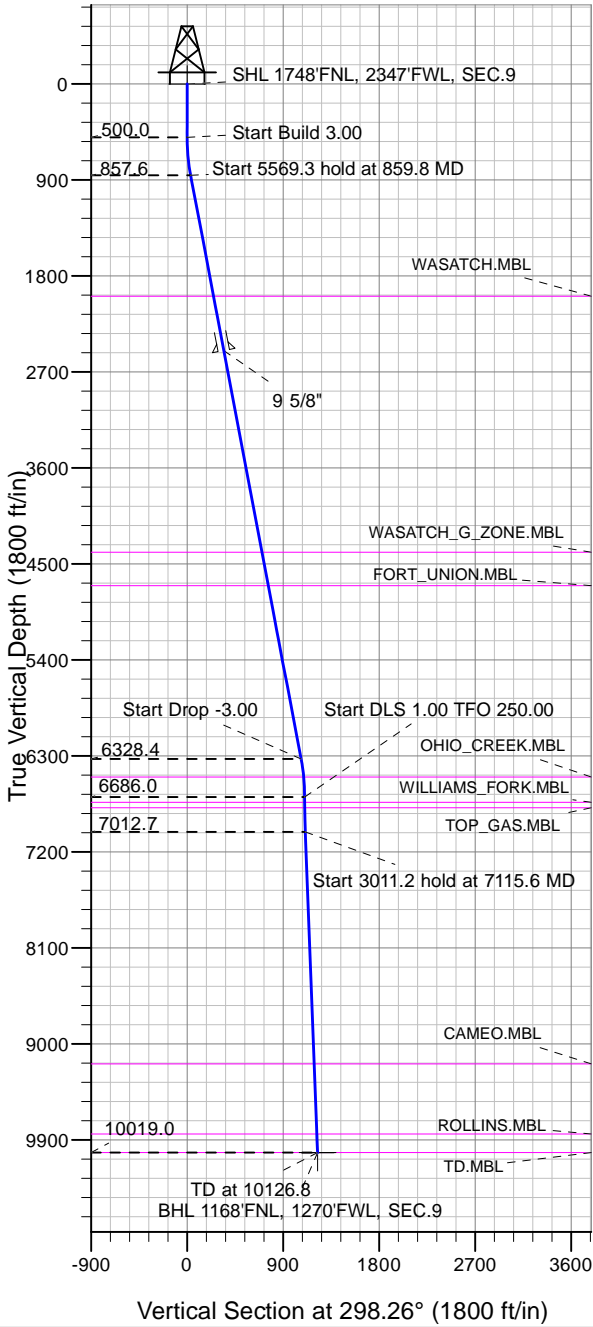


Caerus Oil and Gas LLC



NPR 11D-9 596
 Plan #1 (1-15-18)
 8:14, January 18 2018

Azimuths to True North
 Magnetic North: 9.63°

Magnetic Field
 Strength: 51503.2snT
 Dip Angle: 65.85°
 Date: 1/18/2018
 Model: HDGM

DESIGN TARGET DETAILS

Name	TVD	+N/-S	+E/-W	Latitude	Longitude	Shape
SHL 1748'FNL, 2347'FWL, SEC.9	1.0	0.0	0.0	39.632041	-108.174564	Point
BHL 1168'FNL, 1270'FWL, SEC.9	10019.0	579.0	-1076.9	39.633630	-108.178387	Ellipse (Radii: L200.0 W100.0)

SECTION DETAILS

Sec	MD	Inc	Azi	TVD	+N/-S	+E/-W	Dleg	TFace	VSect	Target
1	0.0	0.00	0.00	0.0	0.0	0.0	0.00	0.00	0.0	
2	500.0	0.00	0.00	500.0	0.0	0.0	0.00	0.00	0.0	
3	859.8	10.79	305.25	857.6	19.5	-27.6	3.00	305.25	33.5	
4	6429.0	10.79	305.25	6328.4	621.4	-879.2	0.00	0.00	1068.6	
5	6788.8	0.00	0.00	6686.0	640.9	-906.8	3.00	180.00	1102.2	
6	7115.6	3.27	250.00	7012.7	637.7	-915.6	1.00	250.00	1108.4	
7	10126.8	3.27	250.00	10019.0	579.0	-1076.9	0.00	0.00	1222.7	BHL 1168'FNL, 1270'FWL, SEC.9



Directional

Caerus Oil and Gas LLC

SEC.9-T5S-R96W

NPR G09 596 Pad Sec.9-T5S-R96W

NPR 11D-9 596

Wellbore #1

Plan: Plan #1 (1-15-18)

Standard Planning Report

18 January, 2018

Database:	US_EDM	Local Co-ordinate Reference:	Well NPR 11D-9 596
Company:	Caerus Oil and Gas LLC	TVD Reference:	WELL @ 7670.0ft (Original Well Elev)
Project:	SEC.9-T5S-R96W	MD Reference:	WELL @ 7670.0ft (Original Well Elev)
Site:	NPR G09 596 Pad Sec.9-T5S-R96W	North Reference:	True
Well:	NPR 11D-9 596	Survey Calculation Method:	Minimum Curvature
Wellbore:	Wellbore #1		
Design:	Plan #1 (1-15-18)		

Project	SEC.9-T5S-R96W, Garfield County, CO		
Map System:	Universal Transverse Mercator (US Survey Feet)	System Datum:	Mean Sea Level
Geo Datum:	NAD 1927 - Western US		Using Well Reference Point
Map Zone:	Zone 12N (114 W to 108 W)		Using geodetic scale factor

Site	NPR G09 596 Pad Sec.9-T5S-R96W				
Site Position:	Northing:	14,404,590.33 usft	Latitude:	39.632067	
From:	Lat/Long	Easting:	2,436,015.01 usft	Longitude:	-108.174492
Position Uncertainty:	0.0 ft	Slot Radius:	13-3/16 "	Grid Convergence:	1.80 °

Well	NPR 11D-9 596					
Well Position	+N/-S	-9.7 ft	Northing:	14,404,580.04 usft	Latitude:	39.632041
	+E/-W	-20.4 ft	Easting:	2,435,994.92 usft	Longitude:	-108.174564
Position Uncertainty		0.0 ft	Wellhead Elevation:	0.0 ft	Ground Level:	7,640.0 ft

Wellbore	Wellbore #1				
Magnetics	Model Name	Sample Date	Declination (°)	Dip Angle (°)	Field Strength (nT)
	HDGM	1/18/2018	9.63	65.85	51,503

Design	Plan #1 (1-15-18)			
Audit Notes:				
Version:	Phase:	PROTOTYPE	Tie On Depth:	0.0
Vertical Section:	Depth From (TVD) (ft)	+N/-S (ft)	+E/-W (ft)	Direction (°)
	0.0	0.0	0.0	298.26

Plan Sections										
Measured Depth (ft)	Inclination (°)	Azimuth (°)	Vertical Depth (ft)	+N/-S (ft)	+E/-W (ft)	Dogleg Rate (°/100usft)	Build Rate (°/100usft)	Turn Rate (°/100usft)	TFO (°)	Target
0.0	0.00	0.00	0.0	0.0	0.0	0.00	0.00	0.00	0.00	
500.0	0.00	0.00	500.0	0.0	0.0	0.00	0.00	0.00	0.00	
859.8	10.79	305.25	857.6	19.5	-27.6	3.00	3.00	0.00	305.25	
6,429.0	10.79	305.25	6,328.4	621.4	-879.2	0.00	0.00	0.00	0.00	
6,788.8	0.00	0.00	6,686.0	640.9	-906.8	3.00	-3.00	0.00	180.00	
7,115.6	3.27	250.00	7,012.7	637.7	-915.6	1.00	1.00	-33.65	250.00	
10,126.8	3.27	250.00	10,019.0	579.0	-1,076.9	0.00	0.00	0.00	0.00	BHL 1168'FNL, 1270'

Database:	US_EDM	Local Co-ordinate Reference:	Well NPR 11D-9 596
Company:	Caerus Oil and Gas LLC	TVD Reference:	WELL @ 7670.0ft (Original Well Elev)
Project:	SEC.9-T5S-R96W	MD Reference:	WELL @ 7670.0ft (Original Well Elev)
Site:	NPR G09 596 Pad Sec.9-T5S-R96W	North Reference:	True
Well:	NPR 11D-9 596	Survey Calculation Method:	Minimum Curvature
Wellbore:	Wellbore #1		
Design:	Plan #1 (1-15-18)		

Planned Survey										
Measured Depth (ft)	Inclination (°)	Azimuth (°)	Vertical Depth (ft)	+N/-S (ft)	+E/-W (ft)	Vertical Section (ft)	Dogleg Rate (°/100usft)	Build Rate (°/100usft)	Turn Rate (°/100usft)	
0.0	0.00	0.00	0.0	0.0	0.0	0.0	0.00	0.00	0.00	
1.0	0.00	0.00	1.0	0.0	0.0	0.0	0.00	0.00	0.00	
SHL 1748'FNL, 2347'FWL, SEC.9										
100.0	0.00	0.00	100.0	0.0	0.0	0.0	0.00	0.00	0.00	
200.0	0.00	0.00	200.0	0.0	0.0	0.0	0.00	0.00	0.00	
300.0	0.00	0.00	300.0	0.0	0.0	0.0	0.00	0.00	0.00	
400.0	0.00	0.00	400.0	0.0	0.0	0.0	0.00	0.00	0.00	
500.0	0.00	0.00	500.0	0.0	0.0	0.0	0.00	0.00	0.00	
600.0	3.00	305.25	600.0	1.5	-2.1	2.6	3.00	3.00	0.00	
700.0	6.00	305.25	699.6	6.0	-8.5	10.4	3.00	3.00	0.00	
800.0	9.00	305.25	798.8	13.6	-19.2	23.3	3.00	3.00	0.00	
859.8	10.79	305.25	857.6	19.5	-27.6	33.5	3.00	3.00	0.00	
900.0	10.79	305.25	897.2	23.8	-33.7	41.0	0.00	0.00	0.00	
1,000.0	10.79	305.25	995.4	34.7	-49.0	59.6	0.00	0.00	0.00	
1,100.0	10.79	305.25	1,093.6	45.5	-64.3	78.2	0.00	0.00	0.00	
1,200.0	10.79	305.25	1,191.9	56.3	-79.6	96.8	0.00	0.00	0.00	
1,300.0	10.79	305.25	1,290.1	67.1	-94.9	115.4	0.00	0.00	0.00	
1,400.0	10.79	305.25	1,388.3	77.9	-110.2	133.9	0.00	0.00	0.00	
1,500.0	10.79	305.25	1,486.6	88.7	-125.5	152.5	0.00	0.00	0.00	
1,600.0	10.79	305.25	1,584.8	99.5	-140.8	171.1	0.00	0.00	0.00	
1,700.0	10.79	305.25	1,683.0	110.3	-156.1	189.7	0.00	0.00	0.00	
1,800.0	10.79	305.25	1,781.2	121.1	-171.4	208.3	0.00	0.00	0.00	
1,900.0	10.79	305.25	1,879.5	131.9	-186.7	226.9	0.00	0.00	0.00	
2,000.0	10.79	305.25	1,977.7	142.7	-201.9	245.5	0.00	0.00	0.00	
2,012.5	10.79	305.25	1,990.0	144.1	-203.9	247.8	0.00	0.00	0.00	
WASATCH.MBL										
2,100.0	10.79	305.25	2,075.9	153.5	-217.2	264.0	0.00	0.00	0.00	
2,200.0	10.79	305.25	2,174.2	164.3	-232.5	282.6	0.00	0.00	0.00	
2,300.0	10.79	305.25	2,272.4	175.2	-247.8	301.2	0.00	0.00	0.00	
2,400.0	10.79	305.25	2,370.6	186.0	-263.1	319.8	0.00	0.00	0.00	
2,500.0	10.79	305.25	2,468.9	196.8	-278.4	338.4	0.00	0.00	0.00	
2,531.7	10.79	305.25	2,500.0	200.2	-283.3	344.3	0.00	0.00	0.00	
9 5/8"										
2,600.0	10.79	305.25	2,567.1	207.6	-293.7	357.0	0.00	0.00	0.00	
2,700.0	10.79	305.25	2,665.3	218.4	-309.0	375.6	0.00	0.00	0.00	
2,800.0	10.79	305.25	2,763.6	229.2	-324.3	394.1	0.00	0.00	0.00	
2,900.0	10.79	305.25	2,861.8	240.0	-339.6	412.7	0.00	0.00	0.00	
3,000.0	10.79	305.25	2,960.0	250.8	-354.9	431.3	0.00	0.00	0.00	
3,100.0	10.79	305.25	3,058.3	261.6	-370.2	449.9	0.00	0.00	0.00	
3,200.0	10.79	305.25	3,156.5	272.4	-385.4	468.5	0.00	0.00	0.00	
3,300.0	10.79	305.25	3,254.7	283.2	-400.7	487.1	0.00	0.00	0.00	
3,400.0	10.79	305.25	3,352.9	294.0	-416.0	505.7	0.00	0.00	0.00	
3,500.0	10.79	305.25	3,451.2	304.8	-431.3	524.3	0.00	0.00	0.00	
3,600.0	10.79	305.25	3,549.4	315.7	-446.6	542.8	0.00	0.00	0.00	
3,700.0	10.79	305.25	3,647.6	326.5	-461.9	561.4	0.00	0.00	0.00	
3,800.0	10.79	305.25	3,745.9	337.3	-477.2	580.0	0.00	0.00	0.00	
3,900.0	10.79	305.25	3,844.1	348.1	-492.5	598.6	0.00	0.00	0.00	
4,000.0	10.79	305.25	3,942.3	358.9	-507.8	617.2	0.00	0.00	0.00	
4,100.0	10.79	305.25	4,040.6	369.7	-523.1	635.8	0.00	0.00	0.00	
4,200.0	10.79	305.25	4,138.8	380.5	-538.4	654.4	0.00	0.00	0.00	
4,300.0	10.79	305.25	4,237.0	391.3	-553.7	672.9	0.00	0.00	0.00	
4,400.0	10.79	305.25	4,335.3	402.1	-568.9	691.5	0.00	0.00	0.00	
4,455.7	10.79	305.25	4,390.0	408.1	-577.5	701.9	0.00	0.00	0.00	
WASATCH_G_ZONE.MBL										

Database:	US_EDM	Local Co-ordinate Reference:	Well NPR 11D-9 596
Company:	Caerus Oil and Gas LLC	TVD Reference:	WELL @ 7670.0ft (Original Well Elev)
Project:	SEC.9-T5S-R96W	MD Reference:	WELL @ 7670.0ft (Original Well Elev)
Site:	NPR G09 596 Pad Sec.9-T5S-R96W	North Reference:	True
Well:	NPR 11D-9 596	Survey Calculation Method:	Minimum Curvature
Wellbore:	Wellbore #1		
Design:	Plan #1 (1-15-18)		

Planned Survey									
Measured Depth (ft)	Inclination (°)	Azimuth (°)	Vertical Depth (ft)	+N/-S (ft)	+E/-W (ft)	Vertical Section (ft)	Dogleg Rate (°/100usft)	Build Rate (°/100usft)	Turn Rate (°/100usft)
4,500.0	10.79	305.25	4,433.5	412.9	-584.2	710.1	0.00	0.00	0.00
4,600.0	10.79	305.25	4,531.7	423.7	-599.5	728.7	0.00	0.00	0.00
4,700.0	10.79	305.25	4,629.9	434.5	-614.8	747.3	0.00	0.00	0.00
4,775.4	10.79	305.25	4,704.0	442.7	-626.3	761.3	0.00	0.00	0.00
FORT_UNION.MBL									
4,800.0	10.79	305.25	4,728.2	445.3	-630.1	765.9	0.00	0.00	0.00
4,900.0	10.79	305.25	4,826.4	456.2	-645.4	784.5	0.00	0.00	0.00
5,000.0	10.79	305.25	4,924.6	467.0	-660.7	803.0	0.00	0.00	0.00
5,100.0	10.79	305.25	5,022.9	477.8	-676.0	821.6	0.00	0.00	0.00
5,200.0	10.79	305.25	5,121.1	488.6	-691.3	840.2	0.00	0.00	0.00
5,300.0	10.79	305.25	5,219.3	499.4	-706.6	858.8	0.00	0.00	0.00
5,400.0	10.79	305.25	5,317.6	510.2	-721.9	877.4	0.00	0.00	0.00
5,500.0	10.79	305.25	5,415.8	521.0	-737.2	896.0	0.00	0.00	0.00
5,600.0	10.79	305.25	5,514.0	531.8	-752.4	914.6	0.00	0.00	0.00
5,700.0	10.79	305.25	5,612.3	542.6	-767.7	933.1	0.00	0.00	0.00
5,800.0	10.79	305.25	5,710.5	553.4	-783.0	951.7	0.00	0.00	0.00
5,900.0	10.79	305.25	5,808.7	564.2	-798.3	970.3	0.00	0.00	0.00
6,000.0	10.79	305.25	5,907.0	575.0	-813.6	988.9	0.00	0.00	0.00
6,100.0	10.79	305.25	6,005.2	585.8	-828.9	1,007.5	0.00	0.00	0.00
6,200.0	10.79	305.25	6,103.4	596.7	-844.2	1,026.1	0.00	0.00	0.00
6,300.0	10.79	305.25	6,201.6	607.5	-859.5	1,044.7	0.00	0.00	0.00
6,400.0	10.79	305.25	6,299.9	618.3	-874.8	1,063.3	0.00	0.00	0.00
6,429.0	10.79	305.25	6,328.4	621.4	-879.2	1,068.6	0.00	0.00	0.00
6,500.0	8.66	305.25	6,398.3	628.3	-889.0	1,080.5	3.00	-3.00	0.00
6,600.0	5.66	305.25	6,497.5	635.5	-899.2	1,092.9	3.00	-3.00	0.00
6,600.5	5.65	305.25	6,498.0	635.5	-899.2	1,093.0	3.00	-3.00	0.00
OHIO_CREEK.MBL									
6,700.0	2.66	305.25	6,597.3	639.7	-905.1	1,100.1	3.00	-3.00	0.00
6,788.8	0.00	0.00	6,686.0	640.9	-906.8	1,102.2	3.00	-3.00	0.00
6,800.0	0.11	250.00	6,697.2	640.9	-906.8	1,102.2	1.00	1.00	0.00
6,838.8	0.50	250.00	6,736.0	640.8	-907.0	1,102.3	1.00	1.00	0.00
WILLIAMS_FORK.MBL									
6,888.8	1.00	250.00	6,786.0	640.6	-907.6	1,102.8	1.00	1.00	0.00
TOP_GAS.MBL									
6,900.0	1.11	250.00	6,797.2	640.5	-907.8	1,102.9	1.00	1.00	0.00
7,000.0	2.11	250.00	6,897.2	639.6	-910.5	1,104.8	1.00	1.00	0.00
7,100.0	3.11	250.00	6,997.1	638.0	-914.7	1,107.8	1.00	1.00	0.00
7,115.6	3.27	250.00	7,012.7	637.7	-915.6	1,108.4	1.00	1.00	0.00
7,200.0	3.27	250.00	7,096.9	636.1	-920.1	1,111.6	0.00	0.00	0.00
7,300.0	3.27	250.00	7,196.8	634.1	-925.4	1,115.4	0.00	0.00	0.00
7,400.0	3.27	250.00	7,296.6	632.2	-930.8	1,119.2	0.00	0.00	0.00
7,500.0	3.27	250.00	7,396.4	630.2	-936.2	1,123.0	0.00	0.00	0.00
7,600.0	3.27	250.00	7,496.3	628.3	-941.5	1,126.8	0.00	0.00	0.00
7,700.0	3.27	250.00	7,596.1	626.3	-946.9	1,130.6	0.00	0.00	0.00
7,800.0	3.27	250.00	7,696.0	624.4	-952.2	1,134.4	0.00	0.00	0.00
7,900.0	3.27	250.00	7,795.8	622.4	-957.6	1,138.2	0.00	0.00	0.00
8,000.0	3.27	250.00	7,895.6	620.5	-962.9	1,141.9	0.00	0.00	0.00
8,100.0	3.27	250.00	7,995.5	618.5	-968.3	1,145.7	0.00	0.00	0.00
8,200.0	3.27	250.00	8,095.3	616.6	-973.7	1,149.5	0.00	0.00	0.00
8,300.0	3.27	250.00	8,195.1	614.6	-979.0	1,153.3	0.00	0.00	0.00
8,400.0	3.27	250.00	8,295.0	612.7	-984.4	1,157.1	0.00	0.00	0.00
8,500.0	3.27	250.00	8,394.8	610.7	-989.7	1,160.9	0.00	0.00	0.00
8,600.0	3.27	250.00	8,494.6	608.8	-995.1	1,164.7	0.00	0.00	0.00

Database:	US_EDM	Local Co-ordinate Reference:	Well NPR 11D-9 596
Company:	Caerus Oil and Gas LLC	TVD Reference:	WELL @ 7670.0ft (Original Well Elev)
Project:	SEC.9-T5S-R96W	MD Reference:	WELL @ 7670.0ft (Original Well Elev)
Site:	NPR G09 596 Pad Sec.9-T5S-R96W	North Reference:	True
Well:	NPR 11D-9 596	Survey Calculation Method:	Minimum Curvature
Wellbore:	Wellbore #1		
Design:	Plan #1 (1-15-18)		

Planned Survey										
Measured Depth (ft)	Inclination (°)	Azimuth (°)	Vertical Depth (ft)	+N/-S (ft)	+E/-W (ft)	Vertical Section (ft)	Dogleg Rate (°/100usft)	Build Rate (°/100usft)	Turn Rate (°/100usft)	
8,700.0	3.27	250.00	8,594.5	606.8	-1,000.5	1,168.5	0.00	0.00	0.00	
8,800.0	3.27	250.00	8,694.3	604.9	-1,005.8	1,172.3	0.00	0.00	0.00	
8,900.0	3.27	250.00	8,794.2	602.9	-1,011.2	1,176.1	0.00	0.00	0.00	
9,000.0	3.27	250.00	8,894.0	601.0	-1,016.5	1,179.9	0.00	0.00	0.00	
9,100.0	3.27	250.00	8,993.8	599.0	-1,021.9	1,183.7	0.00	0.00	0.00	
9,200.0	3.27	250.00	9,093.7	597.1	-1,027.2	1,187.5	0.00	0.00	0.00	
9,293.5	3.27	250.00	9,187.0	595.2	-1,032.3	1,191.0	0.00	0.00	0.00	
CAMEO.MBL										
9,300.0	3.27	250.00	9,193.5	595.1	-1,032.6	1,191.3	0.00	0.00	0.00	
9,400.0	3.27	250.00	9,293.3	593.2	-1,038.0	1,195.1	0.00	0.00	0.00	
9,500.0	3.27	250.00	9,393.2	591.2	-1,043.3	1,198.9	0.00	0.00	0.00	
9,600.0	3.27	250.00	9,493.0	589.3	-1,048.7	1,202.7	0.00	0.00	0.00	
9,700.0	3.27	250.00	9,592.9	587.3	-1,054.0	1,206.5	0.00	0.00	0.00	
9,800.0	3.27	250.00	9,692.7	585.3	-1,059.4	1,210.3	0.00	0.00	0.00	
9,900.0	3.27	250.00	9,792.5	583.4	-1,064.8	1,214.1	0.00	0.00	0.00	
9,951.5	3.27	250.00	9,844.0	582.4	-1,067.5	1,216.0	0.00	0.00	0.00	
ROLLINS.MBL										
10,000.0	3.27	250.00	9,892.4	581.4	-1,070.1	1,217.9	0.00	0.00	0.00	
10,100.0	3.27	250.00	9,992.2	579.5	-1,075.5	1,221.7	0.00	0.00	0.00	
10,126.8	3.27	250.00	10,019.0	579.0	-1,076.9	1,222.7	0.00	0.00	0.00	
TD.MBL - BHL 1168'FNL, 1270'FWL, SEC.9										

Design Targets										
Target Name - hit/miss target - Shape	Dip Angle (°)	Dip Dir. (°)	TVD (ft)	+N/-S (ft)	+E/-W (ft)	Northing (usft)	Easting (usft)	Latitude	Longitude	
SHL 1748'FNL, 2347'FW - plan hits target center - Point	0.00	0.00	1.0	0.0	0.0	14,404,580.04	2,435,994.92	39.632041	-108.174564	
BHL 1168'FNL, 1270'FW - plan hits target center - Ellipse (radii L200.0 W100.0 on 250.00 azi)	0.00	0.00	10,019.0	579.0	-1,076.9	14,405,125.02	2,434,899.98	39.633630	-108.178388	

Casing Points						
Measured Depth (ft)	Vertical Depth (ft)	Name	Casing Diameter (")	Hole Diameter (")		
2,531.7	2,500.0	9 5/8"	9-5/8	12-1/4		

Database:	US_EDM	Local Co-ordinate Reference:	Well NPR 11D-9 596
Company:	Caerus Oil and Gas LLC	TVD Reference:	WELL @ 7670.0ft (Original Well Elev)
Project:	SEC.9-T5S-R96W	MD Reference:	WELL @ 7670.0ft (Original Well Elev)
Site:	NPR G09 596 Pad Sec.9-T5S-R96W	North Reference:	True
Well:	NPR 11D-9 596	Survey Calculation Method:	Minimum Curvature
Wellbore:	Wellbore #1		
Design:	Plan #1 (1-15-18)		

Formations						
Measured Depth (ft)	Vertical Depth (ft)	Name	Lithology	Dip (°)	Dip Direction (°)	
2,012.5	1,990.0	WASATCH.MBL		0.00		
4,455.7	4,390.0	WASATCH_G_ZONE.MBL		0.00		
4,775.4	4,704.0	FORT_UNION.MBL		0.00		
6,600.5	6,498.0	OHIO_CREEK.MBL		0.00		
6,838.8	6,736.0	WILLIAMS_FORK.MBL		0.00		
6,888.8	6,786.0	TOP_GAS.MBL		0.00		
9,293.5	9,187.0	CAMEO.MBL		0.00		
9,951.5	9,844.0	ROLLINS.MBL		0.00		
10,126.8	10,019.0	TD.MBL		0.00		