



February 9, 2018

Colorado Oil and Gas Conservation Commission
1120 Lincoln Street, Suite 801
Denver, CO 80203

RE: Proposed Wellbore Spacing Unit
Schneider HD 11-019HNX
Niobrara New Drill
NWSW Sec. 7, Township 4N, Range 66W, 6th P.M.
Weld County, Colorado

Dear Director Lepore,

Great Western Operating Company, LLC (Great Western) is planning to drill the above captioned well in accordance with the provisions of Colorado Oil and Gas Conservation Commission (COGCC) Rule 318A.e.

Great Western's proposed wellbore spacing unit consists of:

Township 4N, Range 67W (Weld County):

Section 12: N/2N/2
Section 11: N/2N/2
Section 1: S/2S/2
Section 2: S/2S/2

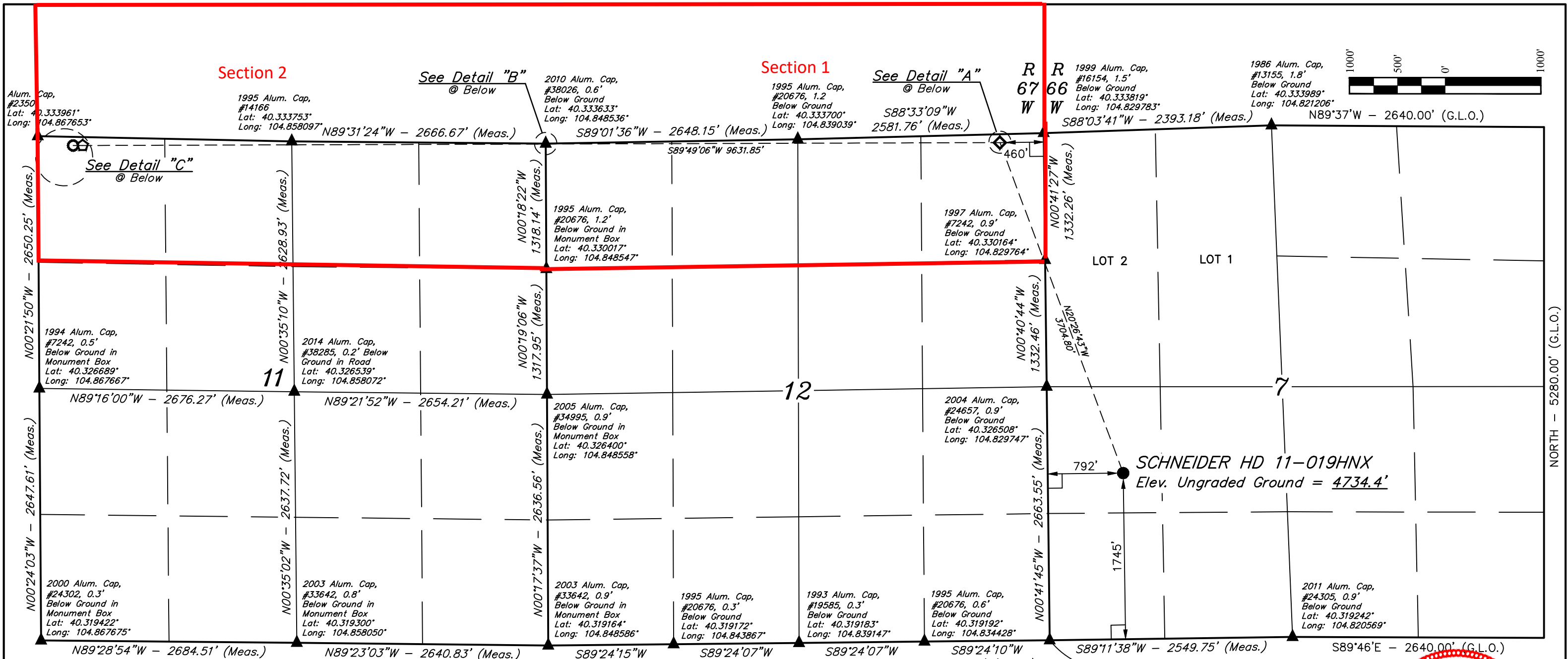
Total Acres: 640ac

The 30 day notification time period has passed and we have not yet received any objections to such well locations or proposed spacing unit, therefore Great Western hereby requests the Director to approve the above mentioned well. Great Western respectfully requests the COGCC review the enclosed map illustrating the proposed wellbore spacing unit.

Respectfully,

Natalie Svendsen

Natalie Svendsen, J.D.
Regulatory Analyst
Great Western Operating Company, LLC



LEGEND:

- 90° SYMBOL
- PROPOSED WELLHEAD.
- ENTRY POINT.
- TARGET BOTTOM HOLE.
- BTM PERF.
- SECTION CORNERS LOCATED. (NAD 83)

LINE TABLE		
LINE	DIRECTION	LENGTH
L1	N01°26'51"W	88.45'
L2	N01°11'46"E	88.42'
L3	N01°11'46"E	90.83'
L4	S89°49'06"W	100.00'

BASIS OF BEARINGS

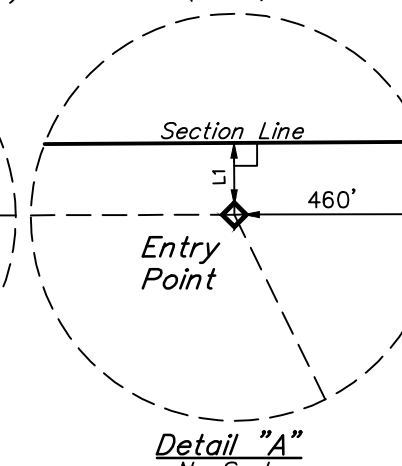
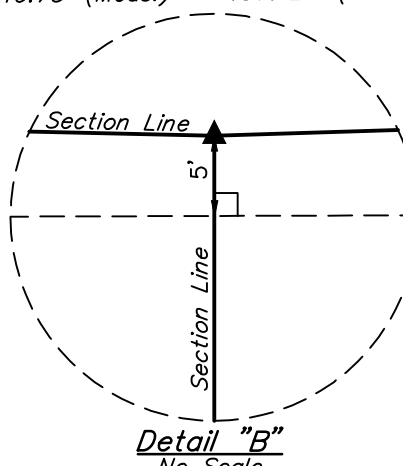
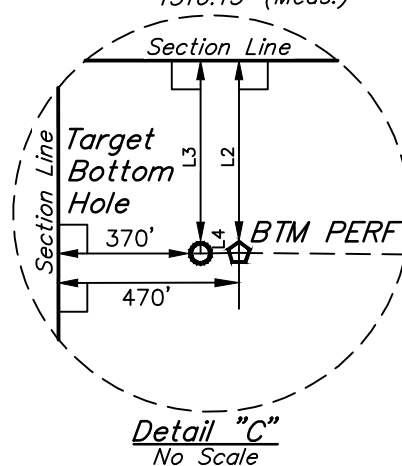
BASIS OF BEARINGS IS A G.P.S. OBSERVATION

BASIS OF ELEVATION

USGS COOPERATIVE BASE NETWORK CONTROL STATION, DESIGNATION "VERMILYEA". NGS DATA SHEET LISTS THE NAVD 88 ELEVATION AS BEING 5026 FEET.



UELS, LLC
Corporate Office * 85 South 200 East
Vernal, UT 84078 * (435) 789-1017



CERTIFICATE
THIS IS TO CERTIFY THAT THE ABOVE PLAT WAS PREPARED FROM FIELD NOTES OF ACTUAL SURVEYS MADE BY ME OR UNDER MY SUPERVISION AND THAT THE SAME ARE TRUE AND CORRECT TO THE BEST OF MY KNOWLEDGE AND BELIEF.

REGISTERED LAND SURVEYOR
REGISTRATION NO. 28285
STATE OF COLORADO
JARED CHRISTOPHER, C.T.

REV: 1 05-04-17 K.B. (SL, TBH MOVE & BTM PERF ADD)

GREAT WESTERN OPERATING COMPANY

SCHNEIDER HD 11-019HNX
NW 1/4 SW 1/4, SECTION 7, T4N, R66W, 6th P.M.
WELD COUNTY, COLORADO

SURVEYED BY: JARED CHRISTOPHER, C.T.	DATE: 05-01-17
DRAWN BY: L.C.S	DATE DRAWN: 12-19-16
SCALE: 1" = 1000'	
WELL LOCATION PLAT	

NAD 83 (SURFACE LOCATION)	NAD 83 (ENTRY POINT)	NAD 83 (BTM PERF)	NAD 83 (TARGET BOTTOM HOLE)
LATITUDE = 40°19'26.41" (40.324003)	LATITUDE = 40°20'00.80" (40.333556)	LATITUDE = 40°20'01.25" (40.333681)	LATITUDE = 40°20'01.26" (40.333683)
LONGITUDE = 104°49'36.82" (104.826894)	LONGITUDE = 104°49'53.15" (104.831431)	LONGITUDE = 104°51'57.49" (104.865969)	LONGITUDE = 104°51'58.78" (104.866328)
NAD 27 (SURFACE LOCATION)	NAD 27 (ENTRY POINT)	NAD 27 (BTM PERF)	NAD 27 (TARGET BOTTOM HOLE)
LATITUDE = 40°19'26.47" (40.324019)	LATITUDE = 40°20'00.87" (40.333575)	LATITUDE = 40°20'01.32" (40.333700)	LATITUDE = 40°20'01.32" (40.333700)
LONGITUDE = 104°49'34.92" (104.826367)	LONGITUDE = 104°49'51.26" (104.830906)	LONGITUDE = 104°51'55.59" (104.865442)	LONGITUDE = 104°51'56.88" (104.865800)